



NO



*B*DANCE[®]

INDEX

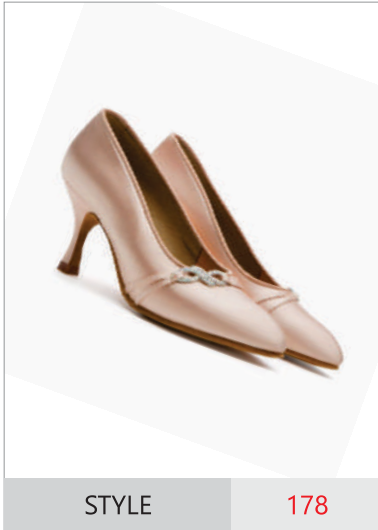
Ladies' Ballroom	04
Ladies' Latin	06
Men's Ballroom	10
Men's Latin	12
Children	14
Teaching & Practice	16
Accesorries	19
Heels	20
Materials	21
Size Chart	23

LADIES' BALLROOM

Choice of Champions

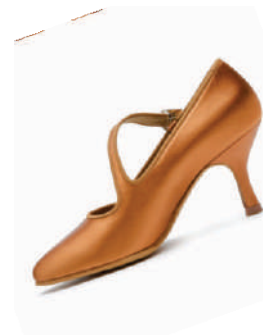


Dmitry Zharkov - Olga Kulikova



STYLE 138

A classic and elegant pointed toe ballroom shoe with a diagonal strap for added support.



LADIES' LATIN

*The perfect combination
of performance and style*



Charles-Guillaume Schmitt - Elena Salikhova



STYLE 2324

STYLE 217

Perfectly balanced modern heels available in various sizes.



STYLE 216



STYLE 222



STYLE 233



STYLE 2341



STYLE 2358



STYLE 2358-C

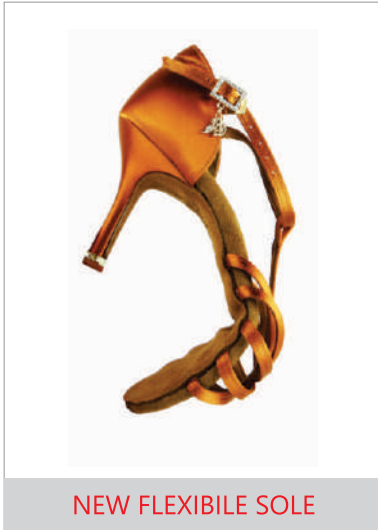


STYLE 2360

LADIES' LATIN



*Unparalleled quality,
style, comfort and
affordability for
dancers worldwide.*



NEW FLEXIBLE SOLE



STYLE 2360-B

Unique design with a vamp made up of crossover straps interlaced together and an adaptable strap for extra stability. Top quality dance shoes with arch support and flexible sole.



STYLE 2376



STYLE 2363



STYLE 2368



STYLE 2307



STYLE 2375-C



STYLE 2383



STYLE 2387

MEN'S BALLROOM

Advanced comfort technology



STYLE 301



STYLE 309



STYLE 321



STYLE 326

MEN'S LATIN



Iconic Style



STYLE 424



STYLE 401-1



STYLE 417



STYLE 419



STYLE 401



STYLE 454



STYLE 457



STYLE 459



STYLE 461

CHILDREN



STYLE

609

This classic girl's sandal is a beautiful and practical shoe with a front T-bar strap and a closed vent for added stability of the foot. The design features a lovely bow tie at the front of the shoe.



STYLE

617

The flexible sole and low heel prevent slipping, offer comfort and impact absorption.



STYLE

501



STYLE

606



STYLE

607



STYLE

610



STYLE

615



STYLE

309



STYLE

702



STYLE

801

TEACHING & PRACTICE

*Carefully designed
for performance*





STYLE JW1-M



STYLE JW1-FL

STYLE JW1

Specially developed for teaching and practice, this shoe is ultra light, amazingly comfortable and features a canvas material which also makes the shoe more flexible.



STYLE AM1



STYLE T1



STYLE T1-B



STYLE T45



STYLE T89



STYLE T54



Dark Pink Orange Royal Blue Purple Green Red Yellow Light Blue

STYLE

T1-B



Buckskin Light Green Beige Lilac Wine Red Cowboy Star Glittery Tweeds Houndstooth

STYLE

T1-B-G



STYLE TS1



STYLE TS2



STYLE TS3



STYLE TS4



FISHNET TIGHTS



PROFESSIONAL FISHNET TIGHTS



SHOE BRUSH



HEEL PROTECTORS



EH1
98 mm/3,9"



EH2
85 mm/3,3"



EH4
75 mm/3"



EH6
70 mm/2,8"



EH7
65 mm/2,6"



EH8
65 mm/2,6"



EH9
65 mm/2,6"



EH10
65 mm/2,6"



EH11
55 mm/2"



EH12
55 mm/2"



EH13
85 mm/3,3"



EH14
85 mm/3,3"



EH15
75 mm/3"



EH16
95 mm/3,7"



EH19
102 mm/4"



TEACHER
50 mm/1,9"



CHILD I
45 mm/1,8"



CHILD II
35 mm/1,4"



CHILD III
35 mm/1,4"



EH17G(2)
85 mm/3,3"



EH2G(2)
85 mm/3,3"



EH14G(2)
85 mm/3,3"



E15G(2)
75 mm/3"



EH4G(2)
75 mm/3"



EH18G(5)
85 mm/3,3"



EH20G(5)
85 mm/3,3"



EH21G(4)
85 mm/2"



LOTUS (4)



TIARA (2)



RIPPLE (2)



GOLD CROWN (1)



SILVER CROWN (1)

REGULAR LEATHER



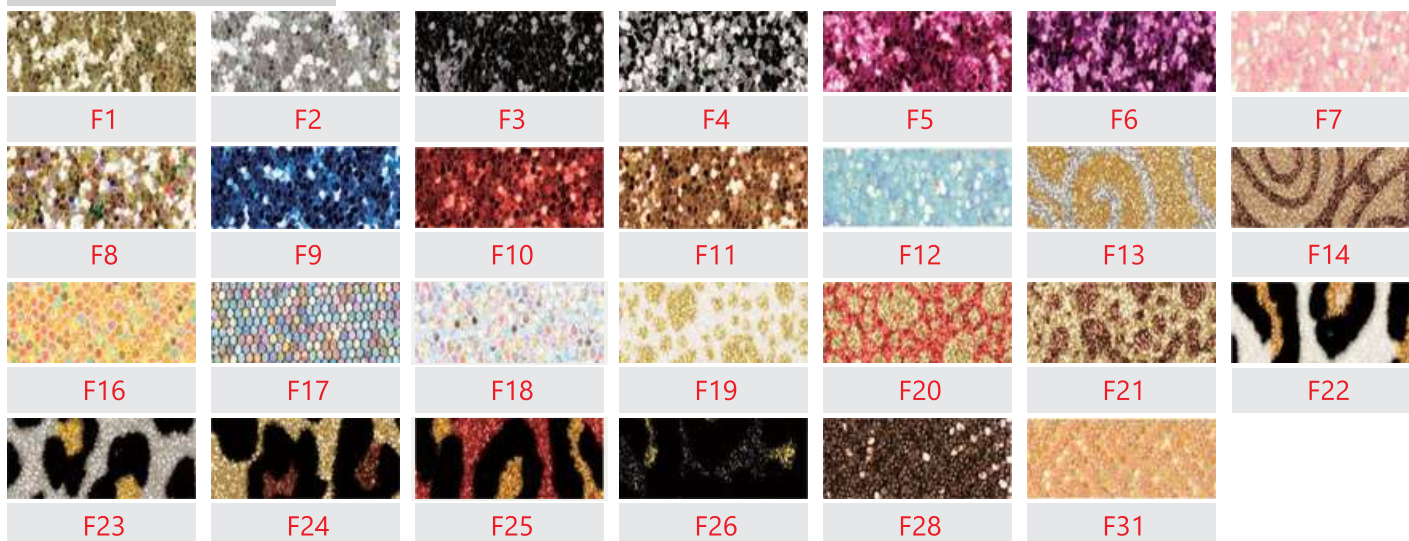
IMPORTED LEATHER



SATIN



GLITTER FABRIC



For competitions, we recommend Imported Leather (for men) or Satin (for ladies).



*Choice of
Champions*



LADIES SIZES

UK	2.5	3	3.5	4	4.5	5	5.5	6	6.5	7	7.5	8	8.5	9
EURO	32	33	34	35	36	37	38	39	40	41	42	43	44	45
USA	4.5	5	5.5	6	6.5	7	7.5	8	8.5	9	9.5	10	10.5	11
LENGTH (CM)	21	21.5	22	22.5	23	23.5	24	24.5	25	25.5	26	26.5	27	27.5

MENS SIZES

UK	5	5.5	6	6.5	7	7.5	8	8.5	9	9.5	10	10.5	11	11.5	12	12.5	13
EURO	37	38	39	40	41	42	43	44	45	46	47	48	49	50	51	52	53
USA	6	6.5	7	7.5	8	8.5	9	9.5	10	10.5	11	11.5	12	12.5	13	13.5	14
LENGTH (CM)	23.5	24	24.5	25	25.5	26	26.5	27	27.5	28	28.5	29	29.5	30	30.5	31	32

CHILDREN SIZES

GIRLS	C10	C10.5	C11	C11.5	C12	C12.5	C13	1	1½	2	2½	3	3½	4	4½
LENGTH (CM)	16	16.5	17	17.5	18	18.5	19	19.5	20	20.5	21	21.5	22	22.5	23
EURO	22	23	24	25	26	27	28	29	30	31	32	33	34	35	36



*B*DANCE[®]

+40 728 202 494

office@bddance.co.uk

www.bddance.co.uk