



KATE MARKER  
HOME

## UPHOLSTERY COLLECTION

# Care & Cleaning Guide

### FABRICS

\* indicates performance fabric

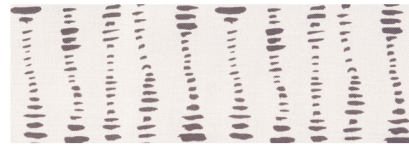
*Kate Marker Home exclusive fabrics and they are now printed in the USA on a textured linen cotton blend. Inspired by nature, our wide array of organic motifs and soothing colorways strike the perfect balance between earthy & natural, soft & feminine.*



*Maddox Moss*



*Mae Coal Reverse*



*Myla Coal*

### CONTENT

*55% Linen | 45% Cotton*

### CARE & CLEANING INSTRUCTIONS

Step One: Blot immediately with a clean cloth to remove spilled material. the majority of spills will simply blot/wipe off. For tougher stains proceed to step two.

Step Two: Spot clean only using a water-free dry cleaning solvent. Pretest a small inconspicuous area before proceeding. do not saturate. Do not use water.

Step Three: Clean spots or stains from the outside to the middle of the affected area to prevent circling. pile fabrics may require brushing with a non-metallic, stiff bristle brush to restore appearance.

Step Four: If overall cleaning is required, use a professional furniture cleaning service.



KATE MARKER  
HOME

**UPHOLSTERY**  
COLLECTION

## Care & Cleaning Guide

### FABRICS

\* indicates performance fabric

*KMH Performance Stain Resistant Linen, 30,000 Double Rubs - Heavy Duty*



*Sahara Apricot \**



*Sahara Dune Green \**



*Sahara Taupe \**



*Sahara Shale \**



*Sahara Silver \**



*Sahara Sands \**



*Sahara Optic White \**

### CONTENT

*100% Linen*

### CARE & CLEANING INSTRUCTIONS

Spot cleaning: use a mild detergent and forcefully blot the stain continuously, pulling the liquid and stain out of the fabric with a dry, clean, paper towel or cloth. wet as needed and do not rub.

Ironing may be needed to reactivate stain resistant properties after wetting an area. never rub. never use bleach. • ink: soak in milk, or use 2/3 cup of soap and 1/3 cup of ammonia mixture.

Press the spot as instructed for spot cleaning • blood: rinse immediately in cold water fruit, coffee, tea and chocolate: use 1/3 cup rubbing alcohol, 1/3 cup white vinegar and 1/3 cup ammonia.

Follow instructions for spot cleaning candle wax: scratch off dried wax, absorb residue with blotting paper and warm iron greasy stains (tomato juice, etc): blot with ammonia as needed to get stain fully wet.

Pull out moisture with a dry white cloth or towel red wine: wet immediately with sparkling water or white wine and follow instructions for spot cleaning



KATE MARKER  
HOME

## UPHOLSTERY COLLECTION

# Care & Cleaning Guide

### FABRICS

\* indicates performance fabric

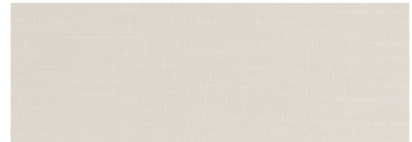
#### Luxurious Washed Chenille with Crypton finish



*Crypton Napa Eggshell* \*



*Crypton Oasis Ecru* \*



*Crypton Laguna Cloud* \*

### CONTENT

*Crypton Napa Eggshell - 100% Polyester*

*Crypton Oasis Ecru & Laguna Cloud - 98% Polyester, 8% Linen*

### CARE & CLEANING INSTRUCTIONS

Most liquids simply roll off of Crypton fabrics, or they can be quickly blotted off the surface with a dry towel or sponge. The spot cleaning method of stain removal can be used for most light to medium stains, such as coffee, red wine, crayon, and ketchup. Be careful to brush lightly since fibers can be broken or matted in the cleaning process.

Before spot cleaning, blot up liquids on the surface with a clean, soft towel. For thicker substances, use a spoon to remove any excess.

Mix 1 tsp. of an enzyme detergent such as Tide® laundry detergent or Dawn® dishwashing detergent with 16 oz. of warm water and mix well.

Apply the cleaning solution using a misting spray bottle.

Use a soft brush to work the solution into the affected area. Make sure to work from the outside of the stain inward so as not to spread the stain. Rinse your sponge or brush frequently.

Rinse thoroughly with water to remove all soap residues since soap attracts dirt. 6. Blot excess moisture with a clean, soft towel or sponge.

Repeat steps 3-7 (spray, brush, rinse, blot) as needed.

Allow fabric to air dry.



KATE MARKER  
HOME

# UPHOLSTERY

COLLECTION

## Care & Cleaning Guide

### FABRICS

\* indicates performance fabric

*Beeswax/matte finish and slightly aged appearance.*



*Buckskin Chamois*



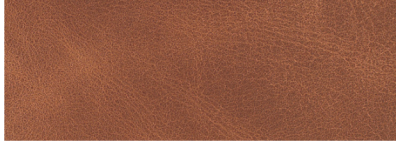
*Buckskin Stone*



*Mont Blanc Blush*



*Dwell Cream*



*Phoenix Natural*

### CONTENT

*Leather*

### CARE & CLEANING INSTRUCTIONS

Leather is a natural product and no two hides are alike. Distinct characteristics are a result of environmental factors and should not be considered defects.

These include, but are not limited to healed scars, natural wrinkles, bite and scrape marks, and color variations.

For continued maintenance on your leather piece, occasionally wipe with a dry, clean cloth to prevent dust build up.

Any spills should be blotted immediately with a clean cloth. Should a stain prove difficult to clean, use distilled water on a lightly damp cloth to blot the stain.

Always pre-test an inconspicuous area before proceeding. Allow the leather to dry naturally. Leather products will fade in direct sunlight.



KATE MARKER  
HOME

**UPHOLSTERY**  
COLLECTION

## Care & Cleaning Guide

**FABRICS** \* indicates performance fabric

**CONTENT**

**CARE**



*Dorset Platinum*

100% Cotton

Spot clean with water-based upholstery cleaner or mild cleansing solvent. If using a slipcover washable fabric, machine wash in cold water with mild laundry cleaner.



*Meridian Pewter*

60% Cotton, 30% Rayon, 10%  
Linen

Spot clean with water-based upholstery cleaner or mild cleansing solvent. If using a slipcover washable fabric, machine wash in cold water with mild laundry cleaner.



*French Ticking Charcoal*

91% Cotton, 9% Polyester

Spot clean with a water-free dry cleaning solvent. Do not saturate. Do not use water. Pre-test a small, inconspicuous area before proceeding.



*Jennings Flax* \*

98% Cotton, 2% Polyester

Step One: Blot immediately with a clean cloth to remove spilled material. the majority of spills will simply blot/wipe off. For tougher stains proceed to step two. Step Two: Spot clean only using a water-free dry cleaning solvent. Pretest a small inconspicuous area before proceeding. do not saturate. Do not use water. Step Three: Clean spots or stains from the outside to the middle of the affected area to prevent circling. pile fabrics may require brushing with a non-metallic, stiff bristle brush to restore appearance. Step Four: If overall cleaning is required, use a professional furniture cleaning service.



KATE MARKER  
HOME

**UPHOLSTERY**  
COLLECTION

## Care & Cleaning Guide

**FABRICS** \* indicates performance fabric

**CONTENT**

**CARE**



100% Polyester

Spot clean with water-based shampoo or foam upholstery cleaner. Do not use solvents to spot clean.

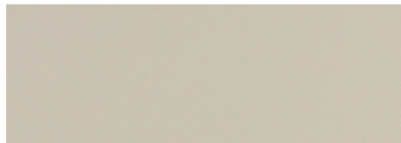
*Sherpa Cloud*



85% Polyester, 10% Acrylic,  
5% Cotton

Spot clean with a water-free dry cleaning solvent. Do not saturate. Do not use water. Pre-test a small, inconspicuous area before proceeding.

*Village Linen*



100% Polyurethane

One of the best ways to keep Ultrafabrics looking great is through proper maintenance and regular cleaning to prevent excessive dirt from accumulating. To help keep your quality fabrics looking their best, follow these guidelines to extend the life of the fabric: -Wipe up spills as soon as they occur -Clean with soap and water -Sanitize using disinfectants such as (1:5) bleach/water solution -For stubborn stains, wipe off with isopropyl alcohol as soon as possible\* -Thoroughly rinse all solution residue with clean water -Air dry

*Brisa Natural* \*



100% Polyester

Spot clean with a water-free dry cleaning solvent. Do not saturate. Do not use water. Pre-test a small, inconspicuous area before proceeding.

*Dynasty Plaster*



KATE MARKER  
HOME

**UPHOLSTERY**  
COLLECTION

## Care & Cleaning Guide

FABRICS \* indicates performance fabric

CONTENT

CARE



*Chariot Sand* \*

58% Cotton, 42% Polyester

**WATER & BLOT**

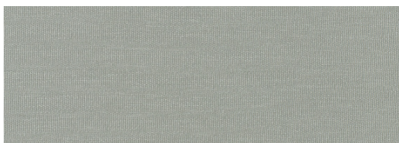
Apply water to the stain and blot using a white paper towel. Do not do the circular motion rub trick because it'll just rip your paper towel & drive the fibres from it into your fabric. Repeat the process until you can't see the stain on the paper towel anymore.

**WATER & CIRCLES**

Apply more water to the area and rub with gentle movements with a microfibre cloth. Use soap for stubborn stains. Any white bar of soap will do, whatever you have in the house. Now you can do the circular motion rub trick. When using soap, use intermittently. Repeat the process until the stain is completely removed.

**AIR DRY**

Don't use a hairdryer or apply heat to the stain in any way. Just air dry.



*Gentry Spa* \*

80% Polyester, 20% Viscose



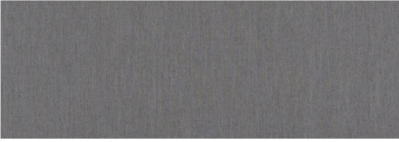
**NO HARSH CLEANERS LIKE BLEACH ARE REQUIRED.** Liquids will bead up without penetrating the fabric and can be removed by blotting as quickly as possible with a clean, absorbent cloth. Any residual discoloration can be removed by gently rubbing the area with a damp cloth. For more difficult stains like ground-in dirt or food, brush off any dried residue with a soft brush and then gently clean the area with a mixture of water and mild detergent, followed by lightly rinsing with clean water.



KATE MARKER  
HOME

**UPHOLSTERY**  
COLLECTION

## Care & Cleaning Guide

FABRICS * indicates performance fabric	CONTENT	CARE
 <i>Deerfield Charcoal</i>	100% Linen	Spot clean with a water-free dry cleaning solvent. Do not saturate. Do not use water. Pre-test a small, inconspicuous area before proceeding.
 <i>Flanders Khaki</i>	70% Cotton, 30% Acrylic	Spot clean with a water-free dry cleaning solvent. Do not saturate. Do not use water. Pre-test a small, inconspicuous area before proceeding.
 <i>Ralph Smoke *</i>	100% Acrylic	Blot (don't rub) liquid spills with a clean, dry cloth. For oil based spills, apply an absorbent such as corn starch, then remove with a straight edge. Spray on a mild cleaning solution of soap and water or use Sunbrella Clean™ Multi-Purpose Fabric Cleaner. Rinse the fabric thoroughly to remove all soap residue. Air dry.