

## FLT-03-2-1 User Manual



### Contents

Caution	1
Specifications	2
Dimensional Drawing	3
Components/Setup	4
Operation	5

# Caution



Ensure no obstacles are in the lifting column's path. Ensure the top is not touching any walls. Ensure all cords are appropriate length to accommodate the change in height.



**Warning**  
**Pinch Point**  
Keep hands and fingers clear.



Keep children away from electric height-adjustable lifting columns, control units, and handsets. There is a risk of injury and electric shock.



Keep all electrical components away from liquids.



Do not sit or stand on the lifting column. Do not crawl or lie under the desk frame.



Do not place any objects taller than 20" underneath the lifting column.



During the Reset Procedure, the lifting column will retract **7mm below the lowest normal operating height**, ensure no obstacles impede this motion of travel.

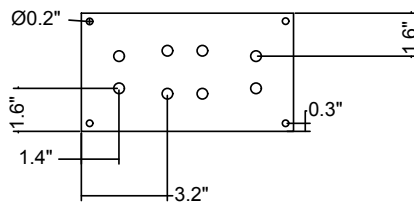
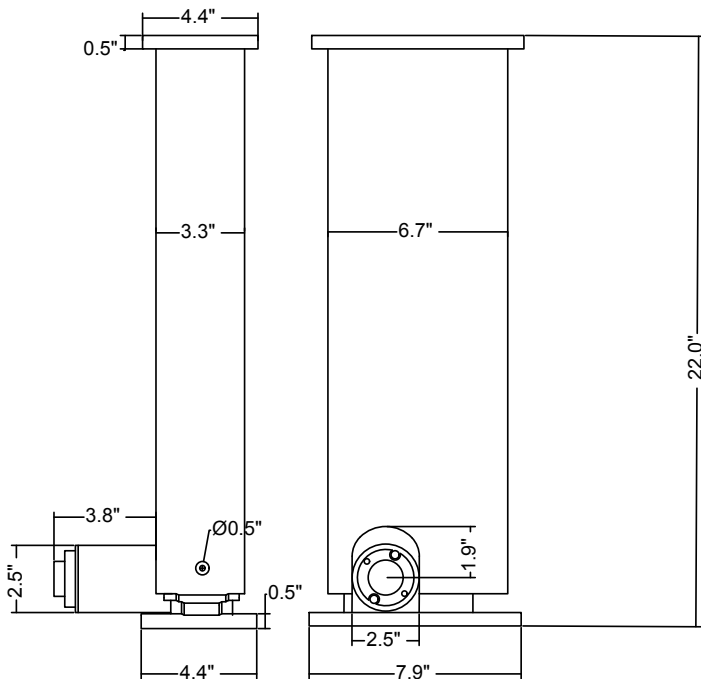
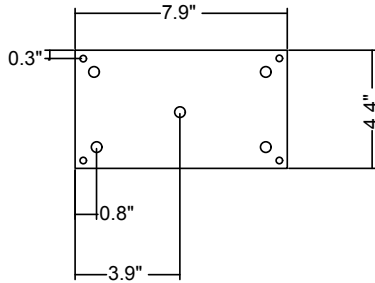


<b>Input Voltage</b>	120 VAC, 60 Hz
<b>Output Voltage</b>	24 VDC
<b>Stroke</b>	16"
<b>Weight Capacity</b>	440lbs
<b>Speed</b>	0.5"/sec
<b>Height Range</b>	22.8" - 37.9" (without tabletop)
<b>Duty Cycle</b>	10% Max. 2 mins on, 18 mins off
<b>Material</b>	Aluminum Alloy
<b>Certification</b>	UL
<b>IP Rating</b>	IP43

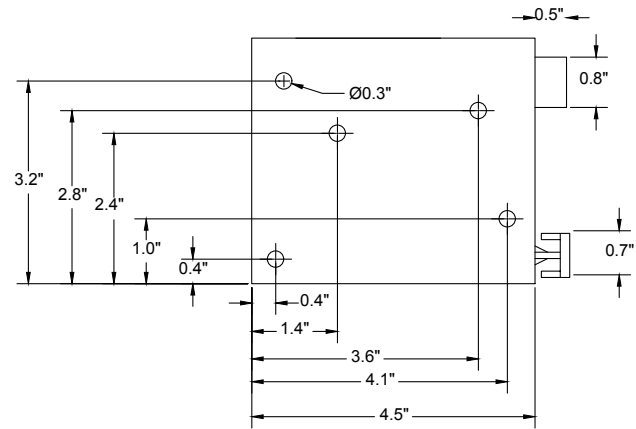
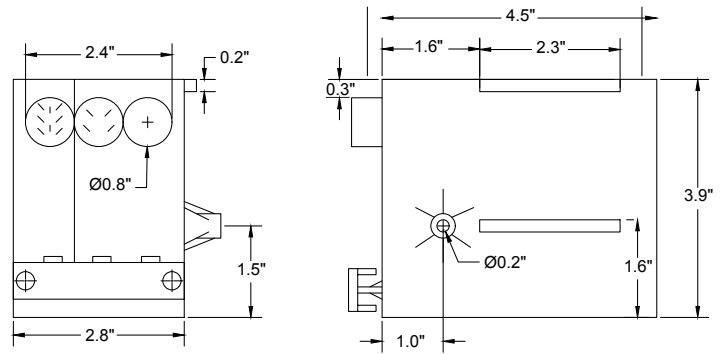
Feature	Description
Soft Start and Stop	The lifting column will accelerate to maximum speed and decelerate to a stop to ensure smooth travel.



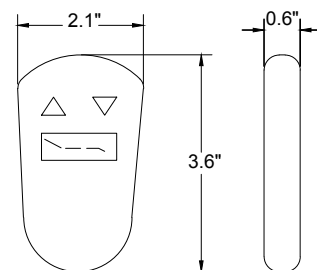
## Leg



## Control Box



## Remote



# Components



## 1 Lifting Column



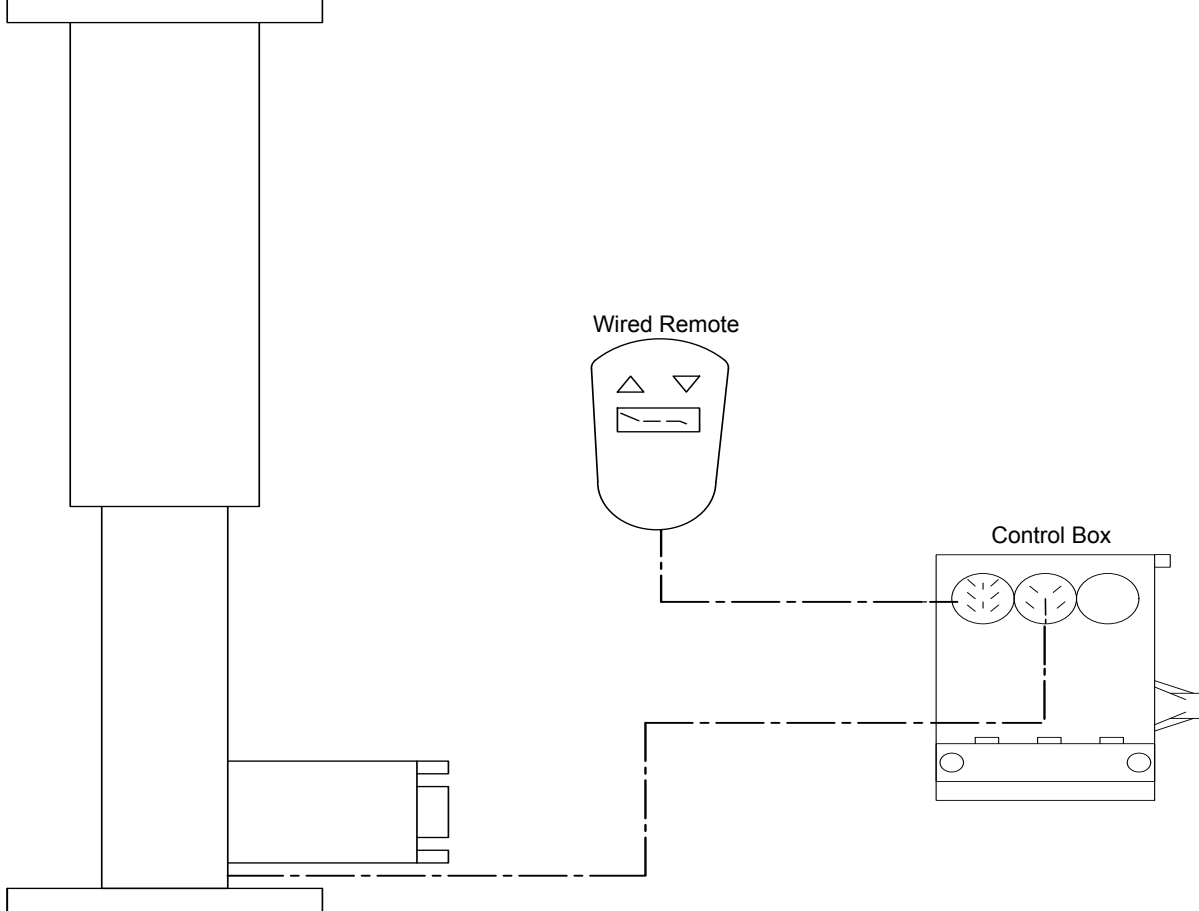
## Control Box and Remote



# Setup



FLT-03-2-1 LIFTING COLUMN





Once the lifting column is installed, use the wired remote for full up and down motion control. The momentary buttons require the user to press and hold the button for both up and down control. Once the button is released, the FLT-03-2-1 will stop moving.

