

## FLT-02

## User Manual



### Contents

Caution/Liability	Page 2
Technical Specifications	Page 3
Parts	Page 4
Assembly Instructions	Page 5-7
Operational/Reset Procedure, Troubleshooting	Page 8
Dimensions	Page 9



# Caution

	<p>Make sure no obstacles are in the desk's path.          Make sure the desktop is not touching any walls.          Make sure all cords are appropriate length to accommodate the change in height.</p>			<p><b>WARNING</b>          Pinch Point          Keep hands and fingers clear.</p>
	<p>Keep children away from electric height-adjustable desks, control units and handsets. There is a risk of injury and electric shock.</p>			
	<p>Keep all electrical components away from liquids.</p>			
	<p>Do not sit or stand on the desk frame.          Do not crawl or lie under the desk frame.</p>			
	<p>Do not place any objects taller than 20" underneath the desk.</p>			
	<p>Do not open any of the components - the Legs, Control Box, or Switch.          There is a danger of electric shock.</p>			
	<p>This product is designed with a duty cycle of 10%          (2 min. on, 18 min. off).</p>			



# Liability

This height adjustable desk has electric motors and is designed for use in dry work areas only.

The desk height is adjustable so that it can be positioned at the most ergonomically suitable height.

Any other use is at user's risk.

Under no circumstances does the manufacturer accept warranty claims or liability claims for damages caused from improper use or handling of the desk frame.

# Technical Specifications



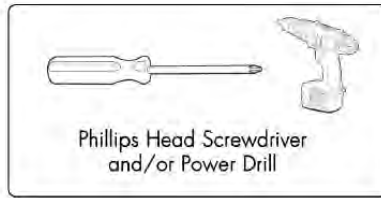
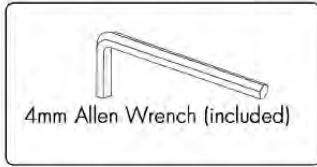
Input Voltage	120VAC, 60 Hz
Output Voltage	24VDC
Stroke (movement)	25.5"
Height Range (without tabletop)	23.6" - 49.1"
Base Width	39.6" minimum - 74" maximum
Minimum Tabletop Size	45" x 25"
Weight Capacity (load)	270 lbs (135 lbs per leg)
No Load Speed	1.57"/s
Full Load Speed	1.18"/s
Duty Cycle	10% (2 minutes on, 18 minutes off)
Operating Noise	< 50 dB
Frame Material	SPCC/ SPHC Steel
Finish	Powder Coat - White(RAL9016), Black(RAL9005), Grey(RAL7045)
Leveling	Adjustable Leveling Feet
Low Power Mode	Standby < 0.1W
Certification	UL and BIFMA United Certificate

Feature	Description
Soft Start and Stop	The tablelift will accelerate to maximum speed and decelerate to a stop to ensure smooth travel.
Memory Presets	The Smart Remote has the ability to save preset height locations for convenience. Set the numbered buttons on the Smart Remote for quick and seamless adjustment.
Anti-Collision	The Anti-Collision feature will help protect the tablelift against obstacles which impede the motion of travel. There are 3 force settings which can be detected during travel, 22lbs, 33lbs, and 44lbs.

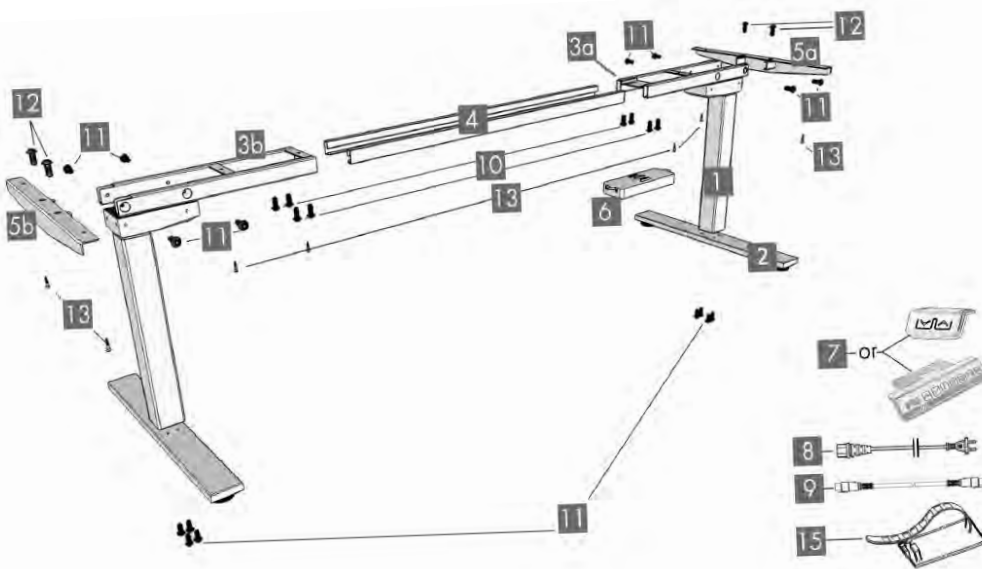
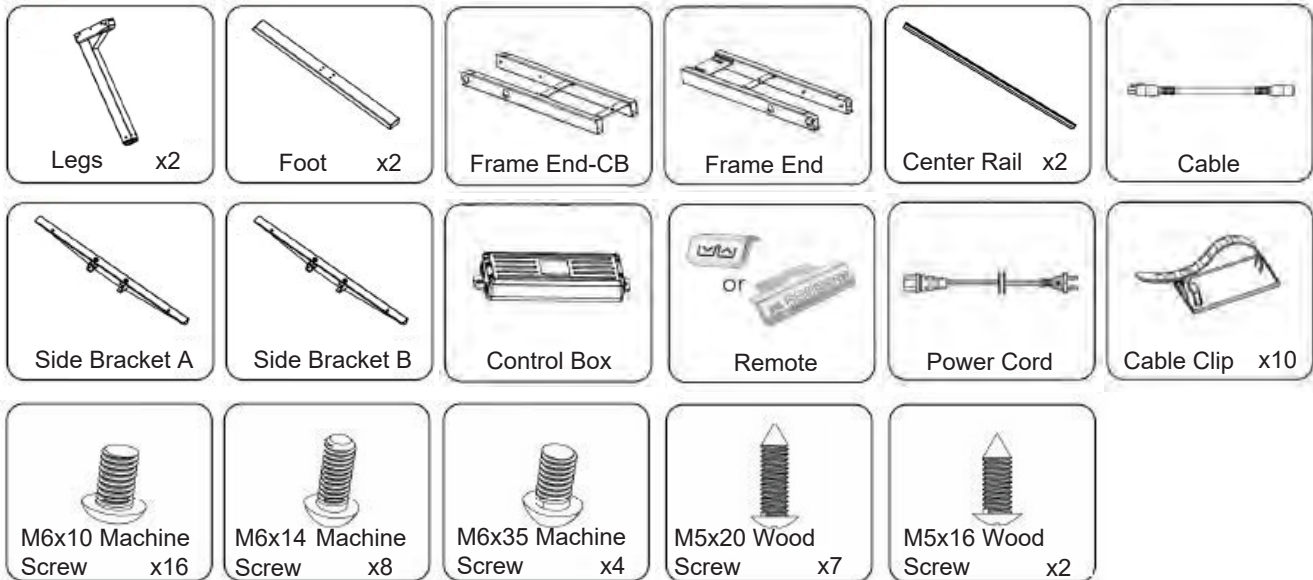
# Parts



## TOOLS REQUIRED



## COMPONENTS



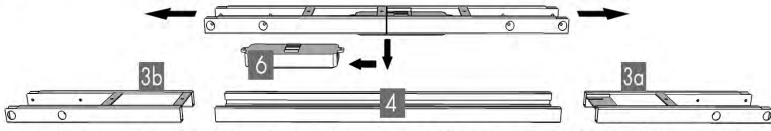
NO.	Components	Qty
1	Leg	2
2	Foot	2
3a	Frame End CB	1
3b	Frame End	1
4	Center Rail	2
5a	Side Bracket A	1
5b	Side Bracket B	1
6	Control Box	1
7	Handset	1
8	Power Cord	1
9	Cable	1
10	M6x10 Machine Screw	16
11	M6x14 Machine Screw	8
12	M6x35 Machine Screw	4
13	M5x20 Wood Screw	7
14	M5x16 Wood Screw	2
15	Cable Clip	10

# Assembly Instructions



## STEP 1

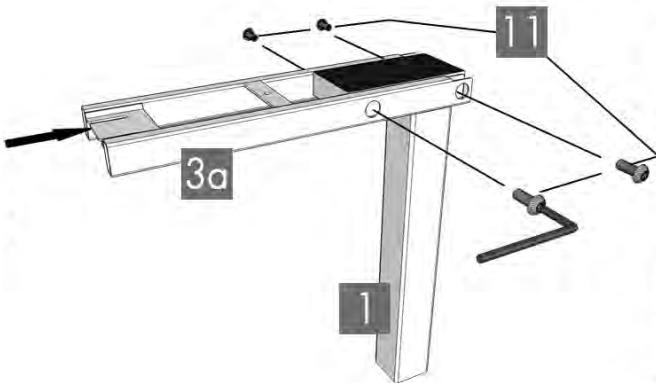
Before you start make sure to lay out all the components and hardware to ensure you have all the necessary parts listed on the parts page. Separate the Frame Ends (3a,3b) and you will find the Center Rails (4) inside.



## STEP 2

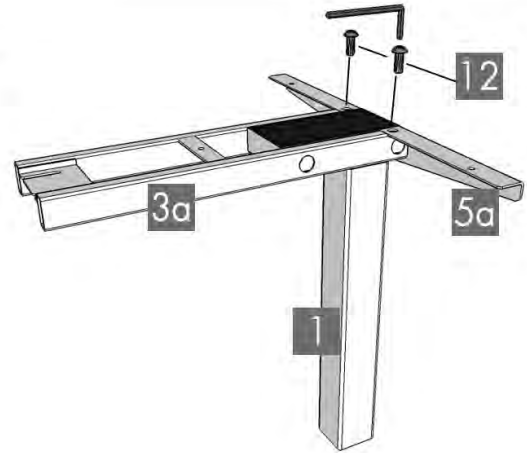
Place one of the Legs (1) into the Frame End-CB (3a) making sure that the bar is on the top side in relation to the (Leg 1) Then line up the holes on each Leg (1) with the holes on the Frame End-CB (3a)

Insert four M6x14 Machine Screws (11) through the holes on the Frame End-CB (3a) going into the Leg (1). Rotate each screw with the supplied Allen Wrench just a few turns, then once all four are inserted you can tighten them until secure. Do this for both Legs.



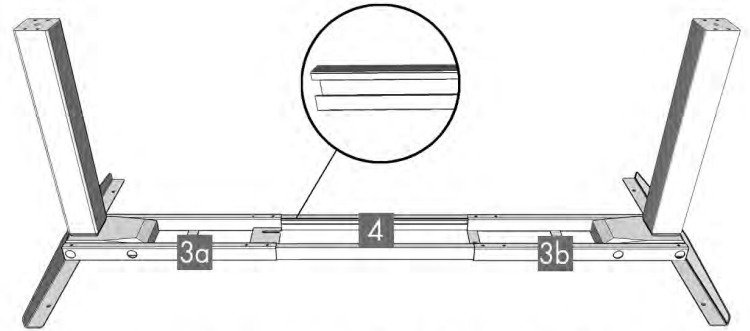
## STEP 3

Take a Side Bracket (5a or 5b) and slide it into the Frame End-CB (3a). Insert two of the M6x35 Machine Screws (12) through the two holes in the top of the Side Bracket. Use the supplied Allen Wrench to rotate each screw a few turns. Once both the screws are inserted, tighten until secure. Repeat this process for both legs.



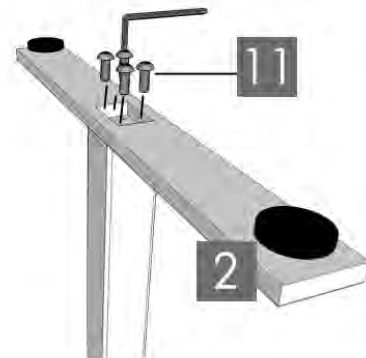
## STEP 4

Slide the two Center Rails (4) into the two Frame Ends (3a,3b). Make sure the slots in the Center Rails are facing inward and that they are closer to the top edge when the assembled unit is upside down (see picture below).



## STEP 5

Attach a Foot (2) with four M6x14 Machine Screws (11) and tighten until secure in a cross-pattern. Repeat this process for both legs.



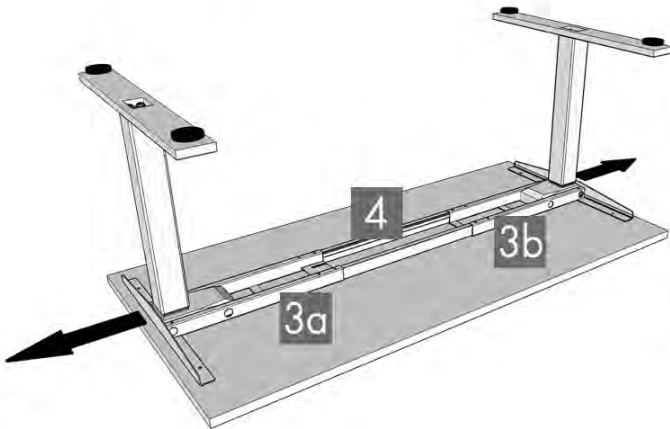
# Assembly Instructions



## STEP 6

Depending on your desktop, it may or may not be pre-drilled. Make sure to check both sides of the desktop before placing the assembled unit on the underside of your desktop.

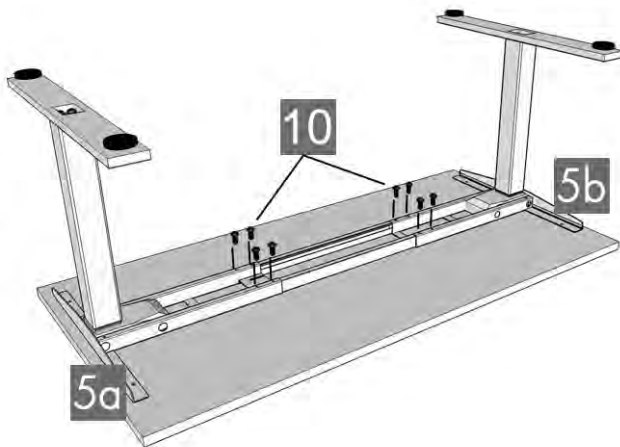
Adjust the width of the unit to fit your desktop by sliding the two halves apart. We recommend to leave at least a half inch of the desktop extending beyond the assembled frame. Make sure to center the Side Brackets (5a,5b).



## STEP 7

If your desktop is pre-drilled skip ahead to Step 8. If your desktop is not pre-drilled, lock the position of the Center Rails using eight of the M6x10 Machine Screws (10).

Make sure the screws contact the Center Rails (4) by sliding them as needed.



## STEP 8

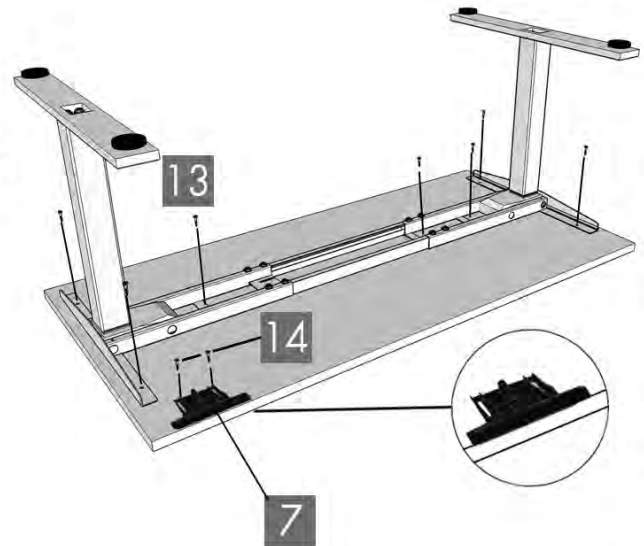
Make sure that the wood screws are not too long for your desktop, otherwise they will puncture the surface once screwed all the way in.

We recommend that you pre-drill any holes needed for fasteners if your desktop is not pre-drilled already. Do not use countersunk screws.

Make sure the assembled unit is positioned properly on the underside of your desktop. Attach the unit to the underside of your desktop using seven of the M5x20 Wood Screws (13).

Attach the Hand Remote (7) so the front of the remote is lined up with the desktop edge. Place the remote anywhere along the edge so that you'll have easy access to it. Use two of the M5x16 Wood Screws (14) to attach and secure the remote to the desktop.

Make sure you do not over-tighten the screws. Doing so could cause damage to the components.



# Assembly Instructions



## STEP 9

Connect the cable from the Leg (1) that is attached to the Frame End-CB (3a) directly into the Control Box (6). Then Slide the Control Box (6) into the Frame End-CB (3a).

Connect the Cable (9) to the other Leg (1) and the Control Box (6). Then Connect the Hand Remote (7) cable to the Control Box (6).

Use the adhesive-backed Cable Clips (15) to secure the cables so they are not loose and in the way.

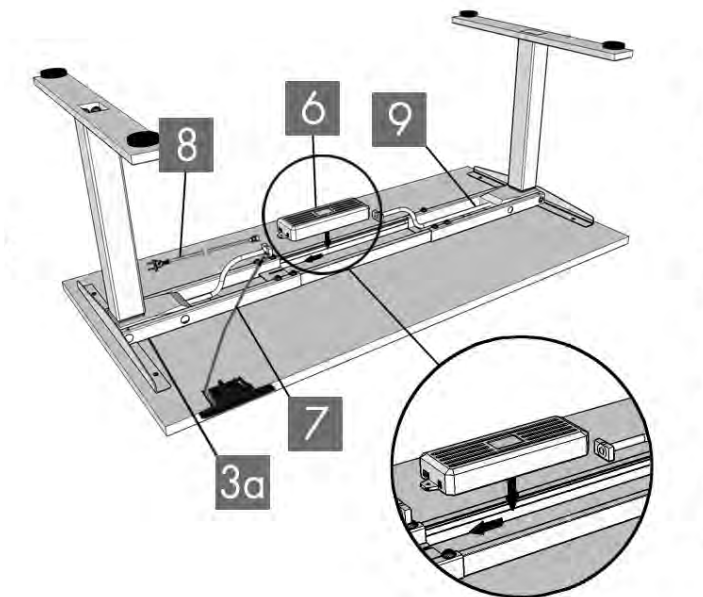
## IMPORTANT

### You must reset the desk prior to use:

To reset you must press and hold the DOWN button on the Hand Remote (7) until the table lift reaches its lowest point. Release the DOWN button. Press and hold the DOWN button again until the LED display shows "RST". If you are not using an LED hand remote hold the DOWN button for 10 seconds. Release the DOWN button. Finally press and hold the DOWN button once more until the desk lowers, slightly rises then stops. Release the DOWN button and your desk is now ready to use.

To program up to four presets with the remote just use the Up/Down buttons to find your desired height, then press the "M" button followed by a number 1-4.

Once a preset button is pressed, the desk will move to the programmed height. Make sure no obstacles are in the desk's path or in contact with any walls.



## STEP 10

We recommend having two people for this step. Grab the fully assembled desk by the legs (not by the desktop) and turn the desk right-side up. Adjust the pre-installed glides on the Feet (2) as needed.

## STEP 11

Plug the Power Cord (8) into a 110V outlet.



# Operational Procedure

Once your table lift is installed, operation is simple. Using the wired remote will allow full control over extending and retracting the lift columns. Use the up button to raise the table lift and the down button to lower the table lift.

You can program up to 4 locations using the memory setup: Use the up/down buttons on the remote to find your desired height(s), then press "M" followed by a number 1-4. The table height position is now saved. To move to the set position, hold the number button.



## Reset Procedure

### IMPORTANT

You must reset the desk prior to use:

To reset, press and hold the DOWN button on the Hand Remote (7) until the table lift reaches its lowest point. Release the DOWN button. Press and hold the DOWN button again until the LED display shows "RST". If you are not using an LED hand remote hold it for about 10 seconds. Release the DOWN button. Finally Press and hold the DOWN button once more until the table lift lowers, slightly rises then stops. This signals the end of the reset procedure. Release the DOWN button and your table lift is now ready to use.

## Troubleshooting

If your desk is not functioning it might need to be reset. Follow the RESET procedure.

If your hand remote has an LED display and it displays "RST" (reset), perform the reset procedure.

If the LED displays shows an error message ("Er1" - "Er13"), confirm that all wired connections are secure. Then perform the reset procedure.

If the LED remote displays "HOT", let the unit cool down for 20 minutes.

If the error message persists after the reset procedure, contact us at 1-800-676-6123 or [sales@progressiveautomations.com](mailto:sales@progressiveautomations.com).



# Dimensions

