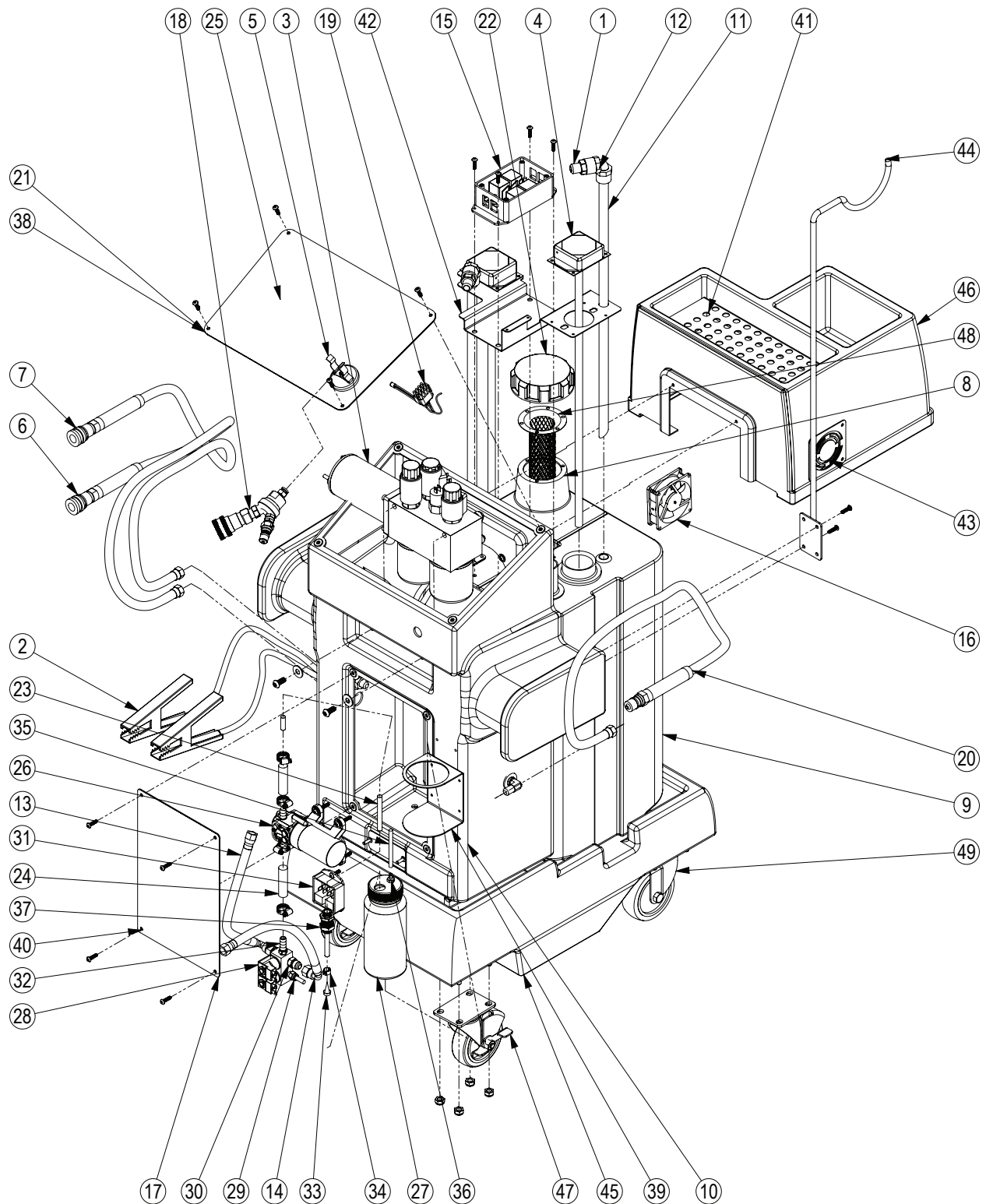


ITEM NO.	PART NO.	DESCRIPTION	QTY.
1	940125	MALE CONNECTOR 1/2 NPT 1/2 JIC	2
2	940307	6GA BATTERY CABLES 16 FT	1
3	940468	MANIFOLD W/R PUMP NO PRO PORT	1
4	940474	FLUID LEVEL SENSOR SHORT	2
5	940667	MAGNET THRU - HOLE CUP	1
6	940785	SERVICE HOSE (BLACK)	1
7	940786	SERVICE HOSE (RED)	1
8	941202	NEW FLUID TANK	1
9	941203	USED FLUID TANK	1
10	941205	ATF CONSOLE-BLACK	1
11	941225	TUBE ALUMINUM 5/8 x 23.81	2
12	941226	ELBOW PLASTIC FEM 1/2 NPT x 5/8 TU	2
13	941229	HOSE ASSY BLK 039-8-8-8-11IN	1
14	941230	HOSE ASSY BLK 3939-8-8-8-10.5	1
15	941617W	MOTOR CONTROL BOX	1
16	941655W	COOLING FAN	1
17	941705	OVERLAY - UNIVERSAL LCD SERVICE PANEL	1
18	941716W	"Y" MANIFOLD FOR DIPSTICK SERVICE MACHINES	1
19	941726W	WIRE HARNESS ONLY	1
20	941728	SERVICE HOSE (GREY)	1
21	941787	OVERLAY - CONTROL PANEL	1
22	942113	TANK CAP	1
23	40200086	PARFLEX TUBING 3/8 OD	2
24	40200577	3/8 ID BLACK HOSE	2
25	40200740	ELECTRONIC BOARD	1
26	40200742	35 PSI PUMP VITON	1
27	40200919	16 OZ ROUND BOTTLE	1
28	40200920	MANIFOLD ASSEMBLY - CHEMICAL INJECTOR	1
29	40200921	MALE STRAIGHT ADAPTER 1/4 TUBE OD X 1/8 NPTF	1
30	40200923	3/8 JIC MALE X 1/8 NPT MALE FITTING	2
31	40200927	RELAY BOARD W/HARNESS - CHEMICAL INJECTOR	1
32	40200928	3/8 ID HOSE BARB x 1/8 MALE NPT	1
33	40201002	INLET SCREEN - CHEMICAL INJECTION	1
34	40201005	PINCH CLAMP 11/32 - 13/32 ID	1
35	40201025	POLY TUBING 1/4 OD PER FOOT	1
36	40201027	BULKHEAD UNION 4-4	1
37	40201028	BULKHEAD UNION -6	1
38	40300296	CONTROL PANEL	1
39	40300345	BRACKET - CHEMICAL BOTTLE	1
40	G940758	SERVICE PANEL	1
41	H940772	HOSE TRAY	1
42	P941234	TANK BRACKET - BLACK	1
43	P941616	COOLING FAN COVER BLACK	2
44	P941725	SHORT SHEPHERD HOOK ASSEMBLY	1
45	R940750	CHASSIS - BLACK	1
46	R940752	TOP - BLACK	1
47	R942118	CASTER 4 W/BRAKE	2
48	R942129	SCREEN BASKET	1
49	R942137	CASTER 4 SWIVEL	2



TSD450 LCDC PARTS BREAKDOWN