

FLO- DYNAMICS®



2024 HEAVY DUTY PRODUCT CATALOG



Built in the USA

QUALITY HEAVY DUTY DIESEL SERVICE EQUIPMENT – FLUID EXCHANGERS & FLUSHERS

COOLING SYSTEM | DIESEL EXHAUST FLUID | INTERCOOLER FLUSHING |
TRANSMISSION | OIL | FLUID SPILL HANDLING | AND MORE

www.flodynamics.com



ABOUT US



THE LEADER IN FLUID MAINTENANCE EQUIPMENT

A change for the better

Flo-Dynamics is a leading equipment manufacturer of fluid maintenance equipment including: transmission fluid exchangers, coolant service equipment, brake fluid exchangers, power steering fluid exchangers, extraction devices and vacuum devices for liquid cleanup.

Flo-Dynamics is a division of Norco Industries, a privately owned 540,000+ square-foot manufacturing facility located in Elkhart, Indiana.

Flo-Dynamics has been engineering and perfecting our equipment since 1993. We have integrated many patented technologies and components, designed with the technician in mind.

We are the only transmission fluid exchange company with both domestic and import OE approvals for servicing cars, trucks and buses. All equipment comes standard with a limited one year warranty. For more details visit our website at flodynamics.com.

Industry-leading speed

Flo-Dynamics' automatic transmission equipment uses a patented pump manifold rated at 2.5 gallons of flow per minute, ensuring a fully automatic, precise and rapid exchange. *The closest competitor rates are 1 to 1.5 gallons of flow per minute.*

Industry-leading accuracy

Our patented measuring technology inside all automatic transmission equipment sends electronic signals down through rods into the tank, creating a resistance number used to electronically pinpoint precise fluid levels. This technology requires no use of scales, which frequently go out of calibration, and no moving parts like bladder systems or pin-wheel mechanisms to slow the process.

Our customers

Flo-Dynamics' equipment is used by some of the most prestigious companies, including:

Mercedes Benz
Ford
GM
Chrysler
Sears

Pep Boys
Jiffy Lube
Midas
Meineke
Valvoline

Grease Monkey
Audi
VW
Goodyear
Firestone

PROUD SUPPORTER AND MEMBER OF:



TABLE OF CONTENTS

COOLANT SERVICE EQUIPMENT

CMS-120 Coolant Maintenance System	4
CMS-240 Coolant Maintenance System	5

MISCELLANEOUS

DCF-35 Diesel Component Flusher	6
OMS-120 Oil Maintenance System	7

TRANSMISSION SERVICE EQUIPMENT

G-TEC TTCF-9A Variable High Flow Heated Flusher	8
G-TEC TTCF-9B High Flow Heated Flusher	9
ProMax40 Heavy and Light Duty.....	10-11
ProMax40 ATF inline Exchanger	10
Allison ATF Adapters	11

MISCELLANEOUS

AirVAC Handheld Wet Vac.....	12-13
Additional Products Automotive Maintenance Equipment.....	14-15

Efficiently and quickly drain & fill heavy duty cooling systems



MFG#: CMS-120
P/N: 40400058

The Flo-Dynamics CMS-120 Coolant Maintenance System, with a single 20-gallon tank, allows a technician to quickly drain and refill a large capacity cooling system in minutes. Using push/pull technology, the CMS-120 simultaneously uses pressure and vacuum, speeding up both the draining and filling processes. Refilling without the need to spend hours bleeding air from a cooling system is easy, using push/pull technology and a vehicle's Flush-Face Quick Connect Coupler cooling system adapter. Without the need to use a drain pan, you can safely and quickly drain a 14-gallon cooling system in approximately 10 minutes, and refill without air pockets in approximately 13 minutes. The CMS-120 will save repair time costs while creating a safer shop environment by preventing coolant spills.

FEATURES:

- Single 20-gallon tank with fluid level sight tube
- Easy mobility cart with heavy duty 8" casters
- Operates on shop air – no 120V or 12V power required
- Push/pull technology enables you to:
 - » Drain a 14-gallon cooling system in approximately 10 minutes
 - » Fill a 14-gallon cooling system without air pockets in approximately 13 minutes
- Easily perform a cooling system pressure leak check
- Easy to see coolant level in tank
- Internally coated tank prevents rust contamination
- Flush-Face Quick Connect Couplers available

SPECIFICATIONS	CMS-120
Dimensions	56"H x 28"W x 24"D
Shipping Weight	166 lb.
Tank Capacity	20 gallons
Power	115 psi shop air
Hose Length	13' outside of machine

AVAILABLE ADAPTERS FOR CMS-120 & CMS-240:



Mack Truck Coolant Adapter
#40100122



Volvo Penta Coolant Adapter
#40100161



Peterbilt/Kenworth Coolant Adapter
#40100164



International/Freightliner Coolant Adapter
#40201189



Penske Pressure Leak Down Hose Adapter
#40100162



Volvo/Mack Coolant Adapter
#40100163

Efficiently and quickly service cooling systems – drain/fill/exchange

The Flo-Dynamics CMS-240 Coolant Maintenance System, with dual 40-gallon tanks, allows a technician to quickly drain, fill or exchange coolant from large capacity cooling systems in minutes without the need to air bleed. Using push/pull technology, the CMS-240 simultaneously uses pressure and vacuum, speeding up both the draining and filling processes. Refilling without the need to spend hours bleeding air from a cooling system is easy, using push/pull technology and a vehicle's Flush-Face Quick Connect Coupler cooling system adapter. Without the need to use a drain pan, you can safely and quickly drain a 14-gallon cooling system in approximately 10 minutes, and refill without air pockets in approximately 13 minutes. With two tanks – one for “used” and the other for “new” coolant – a technician can fully exchange coolant in a 14-gallon system in less than 14 minutes without the need to switch hoses or perform hours of bleeding air. The CMS-240 will save repair time costs while creating a safer shop environment by preventing coolant spills.



MFG#: CMS-240
P/N: 40400056



Adapters Included with both CMS-120 & CMS-240

SPECIFICATIONS	CMS-240
Dimensions	56”H x 28”W x 54”D
Shipping Weight	288 lb.
New & Used Fluid Tanks	Twin 40 gallons
Power	115 psi shop air
Hose Length	13’ outside of machine

FEATURES:

- Dual 40-gallon tanks with fluid level sight tubes
- Easy mobility cart with heavy duty 8” casters
- Operates on shop air – no 120V or 12V power required
- Push/pull technology enables you to:
 - » Drain a 14-gallon cooling system in approximately 10 minutes
 - » Fill a 14-gallon cooling system without air pockets in approximately 13 minutes
 - » Perform a coolant exchange in <14 minutes, fully air bled
- Easily switch service hoses with the turn of a valve
- Filters and cleans coolant when draining a system
- Easily perform a cooling system pressure leak check
- Easy to see coolant level in tank
- Internally coated tank prevents rust contamination
- 13’ polyurethane service hoses
- Flush-Face Quick Connect Couplers available

MFG#: DCF-35
P/N: 40400057

Multi-Purpose HD Flusher - Cooling System, Intercooler and On-Vehicle Ford 6.7L EGR System Carbon Cleaner

The Flo-Dynamics DCF-35 Diesel Component Flusher will flush and clean CAC/intercoolers, radiators & cooling systems and other diesel system components of carbon, oil, and other foreign materials. The DCF-35 is also specifically engineered to clean a Ford 6.7L EGR valve and cooler on-vehicle in one hour or less (depending on the carbon build up) without requiring a scan tool to open the EGR valve! Unlike other aggressive cleaners on the market that attack aluminum, our aluminum-safe FLOCOR cleaner softens and dissolves carbon and breaks down oil without leaving a harmful film. By combining our unique heating cycle, FLOCOR solution, and 45 GPM flush volume, the DCF-35 safely and thoroughly cleans components and systems of carbon, foreign fluids, and debris. The high-performance heater along with circulation accelerates the heating process, obtaining a safe flushing temperature of 130°F in approximately 90 minutes, unlike other units that can take half a day to warm up. PATENT PENDING.



FEATURES:

- Clean & flush intercoolers and cooling systems after a turbo or engine failure in approximately 1-3 hours (plus R&R time)
- Clean carbon from a Ford 6.7L EGR system on-vehicle in approximately one hour (plus R&R time)
- 45 GPM 120V pump
- Easy mobility with heavy duty casters
- Safe to use with GFI protection
- Intra-tank circulation mode for faster warm up
- 35-gallon tank allows flushing of large intercoolers and radiators
- Selectable flush times; choose from continuous or 15-120 minutes
- 1300W 120V heater heats cleaner & water solution to 130°F in approximately 90 minutes

SPECIFICATIONS	DCS-35
Dimensions	42"H x 24"W x 28"D
Shipping Weight	145 lb.
Fluid Tank	35 gallons
Power	120V AC

ADAPTERS:

Interlock Cooler Adapter

P/N: 40201112

4" x 9" Silicone Coupler

P/N: 40201114

3.5" x 9" Silicone Coupler

P/N: 40201116

3" x 6" Silicone Coupler

P/N: 40201118

4.19"-4.50" Tee Clamp

P/N: 40201120

3.75"-4.06" Tee Clamp

P/N: 40201113

3.13"-3.44" Tee Clamp

P/N: 40201115

Black Carry Case

P/N: 40201117

Charge Air Cooler Tester

P/N: 40201119

CAC Cleaning Adapter Kit

P/N: 40201121

CLEANER & ADAPTER KITS:



Component Flushing Air Purge Kit

#40100131
 Purchase with 40100104 or 40100105; Not required if purchasing 40100130.



Ford 6.7L EGR Cooler Cleaning Kit

#40100130
 Clean a Ford 6.7L EGR valve and cooler on-vehicle in one hour or less without requiring a scan tool to open the EGR valve!



FLOCOR - Flo Carbon & Oil Remover (Case of 6)

#40201131
 Aluminum safe and won't harm seals and metals. Specially formulated to soften and dissolve carbon, break down oils, and leaves no harmful film.



CAC HD Pressure & Flushing Adapter Kit

#40100104
 Includes pressure test adapters & 2"-4" I.D. component inlet/outlet connection hoses.



Coolant HD Flushing Adapter Kit

#40100105
 Connects to 5/8"-3" I.D. component inlet/outlets.

Efficiently and Quickly Drain Engine Oil

The Flo-Dynamics CMS-120 Quick Oil Drain System, with a single 20-gallon tank, allows a technician to quickly drain engine oil from large capacity diesel engines in minutes. Using vacuum generated by the CMS-120 and connecting to a vehicle's quick connect drain plug, the CMS-120 significantly speeds up the oil draining process. Without the need to use a drain pan, you can safely, quickly, and completely drain oil from a large diesel engine in minutes. The CMS-120 will save time when performing an oil change, along with creating a safer shop environment by preventing hot oil burns and spills.

FEATURES:

- Single 20-gallon tank with fluid level sight tube
- Easy mobility cart with heavy duty 8" casters
- Easy to use — no 120V or 12V power required
- Operates on shop air
- Easily connects to oil drain quick connect drain plugs
- Cleaner and faster way to drain engine oil
- Easy to see used oil level in tank
- Internally coated tank prevents rust contamination
- Removable tool tray
- 13' polyurethane service hose
- Flush-face quick connect drain plugs available



MFG#: OMS-120PV
P/N: 40400072



Variety of fittings available.

SPECIFICATIONS	OMS-120PV
Dimensions	56"H x 28"W x 24"D
Shipping Weight	166 lb.
Fluid Tank	20 gallons
Power	115 psi shop air
Hose Length	13' outside of machine



Heavy Duty Heated Component Flusher – Variable High Flow w/ Preprogrammed Flush Cycles, Transmission Cooler System & Hydraulic System Flusher

The Flo-Dynamics TTCF-9A Variable High Flow Hydraulic System Flusher will flush and clean transmission coolers and lines or any hydraulic system of contamination, sludge, varnish deposits, and particles from a failed transmission. The TTCF-9A, with an adjustable flow rate from 1-8 GPM, was specially developed for heavy duty transmission cooling systems requiring high flow rates. Using the same hydraulic fluid as the hydraulic system being flushed and cleaned, a user can select from multiple flush cycles ranging from 15-120 minutes, and verify system cleanliness by checking the reusable 60 micron cleanable filter screen. Using the heating circulation mode, heating to a preset 140°F in 45 minutes is fast and easy. Two auto-selected GPM-dependent flush patterns designed to inject the optimal amount of air creating an agitating scrubbing action to remove trapped debris and solidified waxy varnish. Easily switch flow direction without removing service hoses during and between flush cycles with the reverser valve. From the conveniently located control panel, the user can observe system flow, pressure, temperature, total hours run, filter timer, and easily select pump on/off, heater on/off, flush cycles, and manual air purge. PATENT PENDING.



FLUSH COMPLETE			
Run Time: 0:15:44.4			
START		STOP	
T: 140 F		136 F	
P: 75 PSI		54 PSI	
F: 5.60 GPM		7.20 GPM	

Flush cycle results displayed live

FEATURES:

- Powerful 3/4 HP motor
- Requires a dedicated 20-amp or two separate 15-amp circuits
- 13' heavy duty 3/4" service hoses
- 10 gallon transmission fluid capacity with easy to read level sight glass
- Adjustable flow rate of 1-8 GPM, specially developed for every type of vehicle, from automobiles to heavy duty transmission cooling systems requiring a higher flow rate
- Low fluid sensor shuts off heater and pump
- 60 micron cleanable screen filter with "T" handle simplifies verification of cleanliness
- Reverser valve allows easy flow reversal without removing service hoses
- Two auto-selected GPM-dependent flush patterns designed to specifically inject the optimal amount of air creating an agitating scrubbing action to remove trapped debris and solidified waxy varnish
- Selectable flush times; choose from continuous or 15-120 minutes, with or without air injection
- Auto stop and alert at flush cycle end with flush cycle results displayed
- Air purge allows for easy fluid removal from system and service hoses
- Spin-on filter timer displays hours used
- Two non-bypass spin-on magnetic replaceable system filters (P/N 40300272)



MFG#: TTCF-9A
P/N: 40400060

Heavy Duty Base Unit – Heated Component Flusher – Transmission Cooler System and Hydraulic System Flusher

The Flo-Dynamics TTCF-9B Base Unit High Flow Hydraulic System Flusher will flush and clean transmission coolers and lines or any hydraulic system of contamination, sludge and varnish deposits, and particles from a failed transmission. The TTCF-9B has a flow rate of 8 GPM to clean heavy duty transmission cooling systems requiring high flow rates. Using the same hydraulic fluid as the hydraulic system being flushed and cleaned, select from two preset air injected scrubbing action flush patterns, or perform a manual flush. Check system cleanliness with the reusable 60 micron screen filter. The TTCF-9B has a preset heater that heats to 140°F in 45 minutes. Two manually-selected flush patterns designed to inject the optimal amount of air creating an agitating scrubbing action to remove trapped debris and solidified waxy varnish. Easily switch flow direction without removing service hoses during and between flush cycles with the reverser valve. Flush with or without heat with using separately controlled motor/pump and heater switches. PATENT PENDING.

FEATURES:

- Powerful 3/4 HP motor
- Requires a dedicated 20-amp or two separate 15-amp circuits
- 13' heavy duty 3/4" service hoses
- 10 gallon transmission fluid capacity with easy to read level sight glass
- 8 GPM flow rate
- Low fluid heater cutoff float switch
- 60 micron cleanable screen filter
- Reverser valve allows easy flow reversal without changing service hoses during and between flush cycles
- Select from two preset flush patterns or manual air purge to additionally agitate during flushing and to clear service lines and cooling system after flushing
- 1500 watt heater set at 140°F
- Temperature gauge
- Flush with or without heat
- Two non-bypass spin-on magnetic replaceable system filters (P/N 40300272)
- Hour run meter
- 10" semi-pneumatic tires



MFG#: TTCF-9B
P/N: 40400061

AVAILABLE ADAPTER KITS FOR 9A & 9B:



Allison Adapter Kit
#40201346
Includes 2 each: Connection Hoses, -8 (1/2 JIC), -12 (3/4 JIC), -16 (1" JIC), -20 (1-1/4" JIC)



Automotive to TTCF Adapter Kit
#40300434
Reduces heavy duty hose couplers to fit automotive adapters.

TRANSMISSION

Perfect for fleet service centers with the industry's most extensive adapter coverage

Includes both standard and Allison adapter sets to easily hookup to virtually any automobile, truck, or bus.

ProMax40 FEATURES:

- Powerful 2.5 gallon-per-minute pump performs complete fluid exchange in minutes
- Fully automatic operation
- Works with vehicle's 12 volt battery
- Adapter management rack
- REMOVE fluid feature allows easier and cleaner removal of pan for filter change when necessary
- Waste fluid is drained at the touch of a button
- Ability to select 1 to 35 quart exchange amount allows for more cost-effective servicing



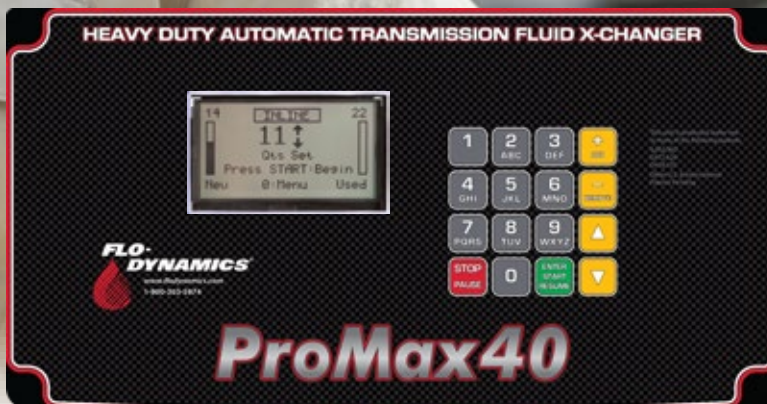
MFG#: ProMax40
P/N: Promax40

Inline
Exchange



UNIVERSAL ALLISON ATF ADAPTERS (KIT: #941179)

Description	Diameter Lines	Thread	MALE ADAPTER			FEMALE ADAPTER		
			Part #	Hose #	Image	Part #	Hose #	Image
30° M/F PTT #12	1-5/16"	14	941844	#134		941845	#135	
45° M/F #12	1-1/16"	14	941846	#136		941847	#137	
37° M/F #16 JIC	1-5/16"	12	941849	#139		941848	#138	
37° M/F #10	7/8"	14	941851	#141		941850	#140	
ORFS M/F #12	1-3/16"	12	941893	Fitting		941894	#143	
37° M/F #12 JIC	1-1/16"	12	941895	#144		941896	#145	
M- 1 Flat Face F- 1 with O-Ring	1-1/16"		941898	#147		941897	#146	
ORFS M/F #10	1"	14	941904	#153		941903	#152	
GM Style Top Kick Adapter Set M & F Adapters			941966	NA		941168	All	Allison Adapter Kit (Fits other machines with smaller fittings)

Also includes all standard adapters


Fully interactive control panel provides easier operation with closer monitoring for greater efficiency, control and cost savings.

SPECIFICATIONS	ProMax40
Dimensions	43"H x 23"W x 26"D
Shipping Weight	140 lb.
Waste Fluid Tank	40 quarts
New Fluid Tank	40 quarts
Power	12V DC from vehicle battery

The fast, easy, economical way to clean up spills

Perfect for automotive, heavy duty, industrial, marine, collision, and farm applications. Just connect to shop air, vacuum up the spill, empty into a waste container, done. It's that simple!

Our patented process can vacuum up all kinds of fluids, from anti-freeze to heavy weight hydraulic oils. Not to be used for gasoline.

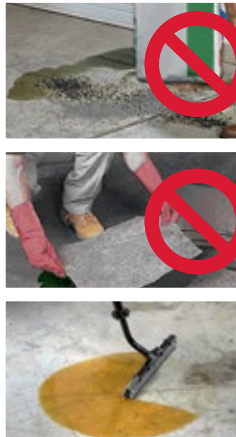
FEATURES:

- Recipient of three *Innovation Awards*, Motor Top 20, PTEN and TST
- Dual mufflers provide better suction
- Redesigned bucket eliminates dimples on the squeegees and brushes
- Replaceable squeegees and brushes for rougher floors
- 2" bucket caster wheels



MFG#: AirVAC
P/N: 40400020

Shown with included waste bucket and bracket



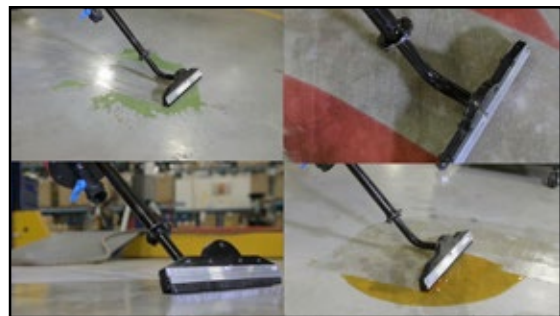
No contaminated pellets to dispose of

No rags or pads to dispose of

Cleans without the mess



Watch our demonstration video here



Recipient of three Innovation Awards



SPECIFICATIONS	AirVac
Dimensions	48"H x 10.75" W
Weight	23 lb.
Nozzle Width	10"
Tank Diameter	7"
Fluid capacity	1.5 gallons



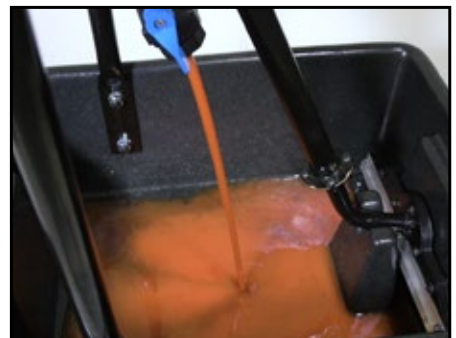
MISCELLANEOUS



Connects to shop air



Cleans up fluid spills with ease



Drains into included bucket

Flo-Dynamics also offers a full line of automotive fluid maintenance equipment, including:

- **Transmission Fluid**
- **Coolant**
- **Brake Fluid**
- **Power Steering Fluid**
- **Differential Fluid**
- **Fluid Extraction**



MISCELLANEOUS

Visit www.flodynamics.com
for more information.



GO WITH THE FLO

DISTRIBUTED BY:



3300 Reedy Drive Elkhart, IN 46514

800-303-5874 www.flodynamics.com

#40201218 Printed in the U.S.A. 2024

Not responsible for typographical errors.