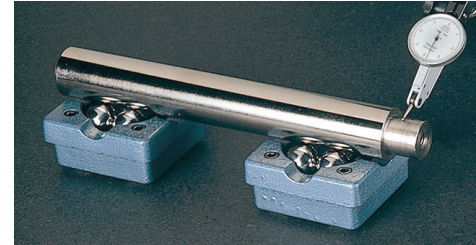
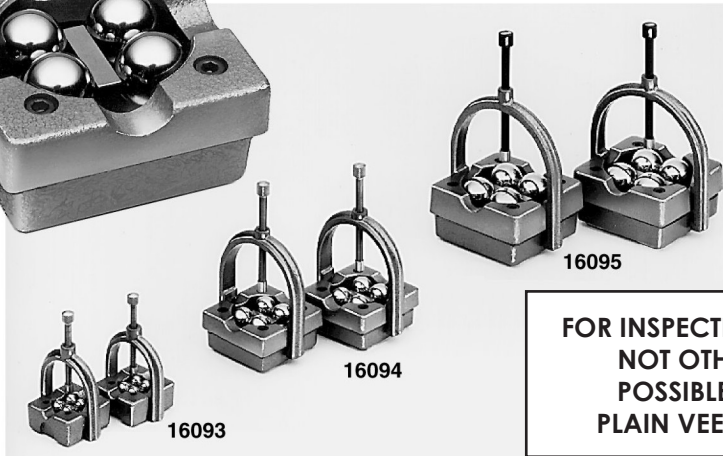


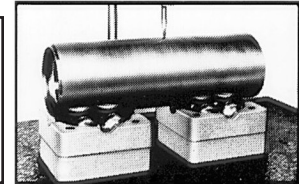


FLEXBAR BALL BEARING "V" BLOCKS

...Overcomes Production or Set-Up Difficulties Inherent in Plain V-Blocks.
Overcomes Geometric Limitations.



**FOR INSPECTION SET-UPS
NOT OTHERWISE
POSSIBLE USING
PLAIN VEE BLOCKS!**



ENABLES YOU TO INSPECT AND DETECT OUT-OF-ROUND CONDITIONS AND LOBES WITH NO DAMAGE TO PARTS AND NO DAMAGE TO BLOCKS

SPECIAL FEATURES:

- Accuracy of Balls: 25 millionth of an inch sphericity on small and medium set. 50 millionths of an inch on large set.
- Overall accuracy of matched pairs ± 5 microns.
- Balls Rockwell C-62 — Surface finish 0.2 microinches.
- Class 40 cast iron, used on base and housing, is heat stabilized and seasoned.
- Spacers are hardened through and precision ground by pairs.
- Pair of blocks assembled using metrology equipment.

SPECIAL FUNCTIONS:

- Balls undergo slight elastic deformation when parts are loaded on. Hence parts will not be damaged while being inspected.
- Detection of lobes and superimposed lobes made easy.
- Easy readjustment of balls which provide new bearing points.
- Handles diameters up to 15 inches.
- Increased contact area due to special geometric spacing of balls in blocks.
- 8 contact points per pair of blocks share load distribution.
- Balls are self-aligning and hard wearing.
- 1 each precision spacer per block provides 2 different angles per pair.
- Simply turn each block 90° and inspect component using both angles.



IMPORTANT NOTE: BALLS ARE FIXED IN BLOCKS AND ARE NOT DESIGNED TO ROTATE IN USE.

SIZE	INSPECTION CAPACITY	DIAMETER OF BALLS	WT. CAPACITY OF PAIR	WORK CAPACITY W/CLAMPS
SMALL PAIR	$\frac{3}{64}$ " TO $2\frac{1}{2}$ "	$\frac{1}{2}$ "	220 lbs.	$1\frac{1}{4}$ "
MEDIUM PAIR	$\frac{3}{22}$ " TO 5"	$\frac{15}{16}$ "	1,100 lbs.	$2\frac{1}{2}$ "
LARGE PAIR	$\frac{3}{16}$ " TO 15"	$1\frac{1}{2}$ "	2,000 lbs.	3"

MODEL NO.	ORDER - DESCRIPTION - BALL-BEARING "V" BLOCKS
16097	Small Pair Blocks, 2" x 2" x 1" (without clamps) & Test Ball
16098	Medium Pair Blocks, 3 $\frac{3}{8}$ " x 3 $\frac{3}{8}$ " x 2 $\frac{5}{8}$ " (without clamps) & Test Ball
16099	Large Pair Blocks, 4 $\frac{3}{4}$ " x 4 $\frac{3}{4}$ " x 2 $\frac{5}{8}$ " (without clamps) & Test Ball
16123	Pair Clamps for Model No. 16097
16124	Pair Clamps for Model No. 16098
16125	Pair Clamps for Model No. 16099
16067	Spare Balls, Set of 4, for Model No. 16097 or 16093
16068	Spare Balls, Set of 4, for Model No. 16098 or 16094
16069	Spare Balls, Set of 4, for Model No. 16099 or 16095
16093	Small Pair Blocks, 2" x 2" x 1" (Complete with clamps & Test Ball)
16094	Medium Pair Blocks, 3 $\frac{3}{8}$ " x 3 $\frac{3}{8}$ " x 2 $\frac{5}{8}$ " (Complete with clamps & Test Ball)
16095	Large Pair Blocks, 4 $\frac{3}{4}$ " x 4 $\frac{3}{4}$ " x 2 $\frac{5}{8}$ " (Complete with clamps & Test Ball)