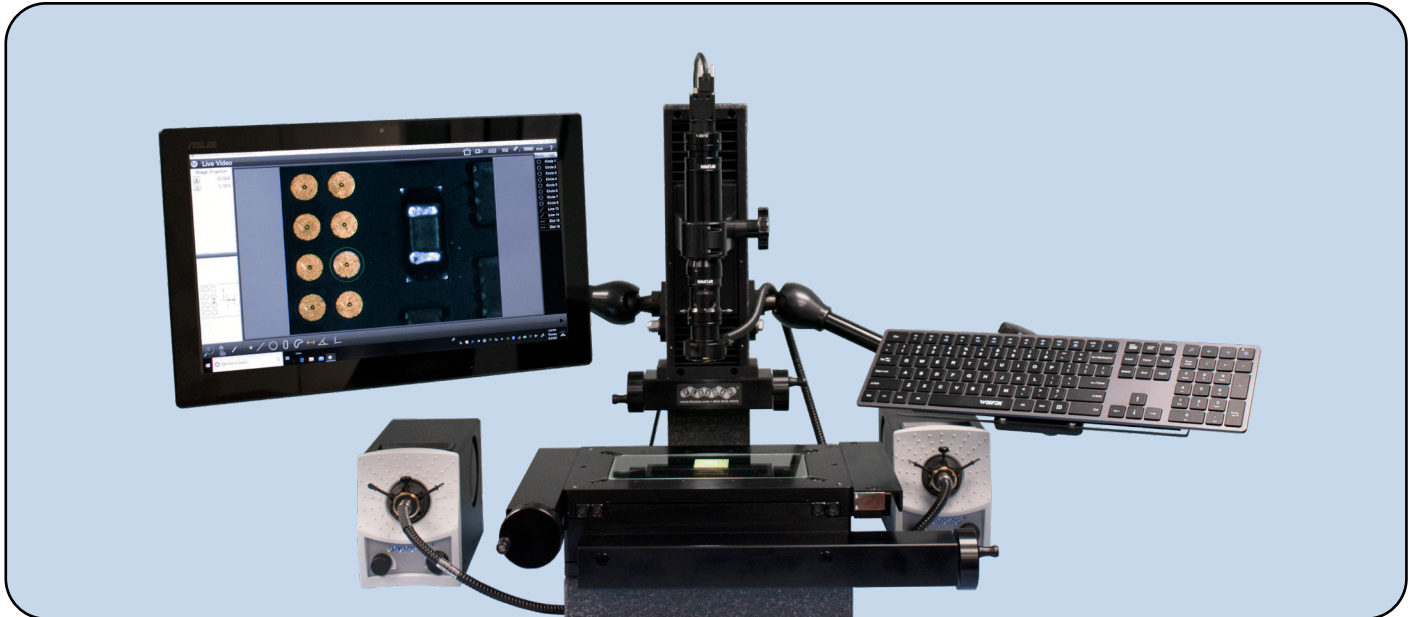
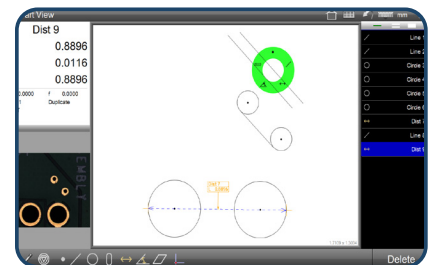
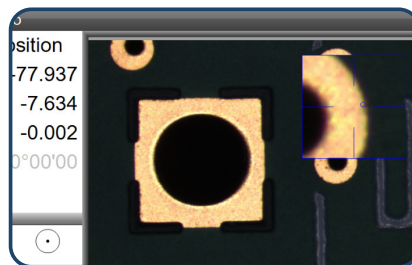
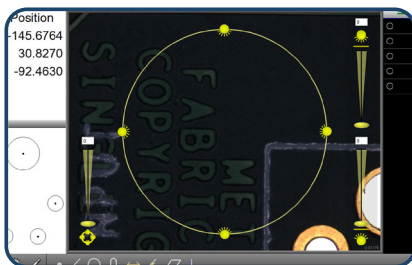




OPTIFLEX MLX SERIES VIDEO INSPECTION/MEASUREMENT SYSTEMS



State-of-the-art Granite Z video systems configured with a choice of powerful measurement options including the MetLogix Mx200 DRO touchscreen or M3 Software with Video Edge Tools



AVAILABLE FEATURES

- Geometric Tolerancing and Part Programming
- Video Edge Detection
- Graphic Based Constructions
- Data Export and Reporting
- DXF Based Overlay Part Inspection
- Touchscreen Gesture Controls

250 Gibbs Road
Islandia, NY 11749

+1 800 879 7575

sales@flexbar.com

www.flexbar.com

OPTIFLEX MLX-3000 SERIES "GRANITE Z" VIDEO INSPECTION & MEASUREMENT SYSTEMS



Opti-Flex MLX-3000 Series systems features a touchscreen monitor with geometric edge select tools. The powerful MetLogix M3 measuring software is intuitive and easy to use.

SYSTEM FEATURES

- Solid granite frame and column guarantees strength, accuracy and stability
- Precision 8" x 4" (200mm x 100mm) or 12" x 12" (300mm x 300mm) crossed roller bearing stage open frame design
- Superb full-color high res. image with zoom optics
- High quality micro-zoom detent lens with fine focus
- LED lighting available
- Z-Axis measurement available
- Adjustable lens mount dovetail
- Tooling holes on stage plate for fixturing
- Manually controlled fiberoptic light source and ringlight
- Ambidextrous Omnidirectional Arm

Optional Upgrades:

18-BLF	Bottom Lighting Upgrade Lightsource and Fiberoptic Light Pad
18-Twinarmup	Omnidirectional Arm Upgrade
12360-UP	Upgrade light boxes to high intensity LED
18-UP2/3	Third Axis Scale and Software Upgrade, 1micron z scale
18-DXF-FOV-UP	DXF Cad Upgrade Module FOV measurement package
18-CCI-UP	Software Controlled Halogen Lighting Upgrade

M3 SOFTWARE FEATURES

- Geometric functions
- Optical + video edge detection
- XY, XYZ, or XYQ axis support
- Data reporting / export
- Partview display
- Part programming and playback
- Tolerancing
- Feature annotation
- Video image archive
- Image mark up
- Optional DFX based overlay part inspection (available add-on - see next page)

Base System Versions:

- **MLX-3000**, Opti-Flex M3, 8" x 4" Measurement System, .5 Micron Scales
- **MLX-3000-12**, OptiFlex M3, 12" x 12" Measurement System, .5 micron scales



METLOGIX M3 MEASURING SOLUTIONS

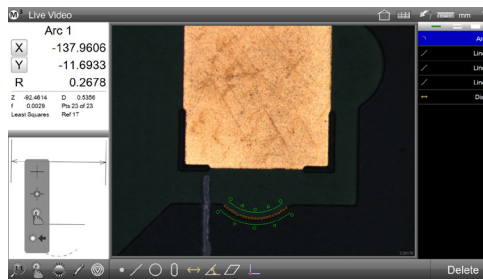
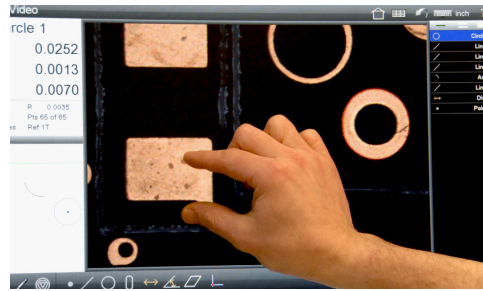
SOME OF THE MANY FEATURES AND BENEFITS

DESIGNED FOR MULTI-TOUCH SOFTWARE CONTROL

In addition to the conventional mouse interface, expanded Multi-Touch logic allows for one-touch feature measurements as well as versatile pan and zoom of the live video image and the active part view. Increase the efficiency of feature measurements, feature data manipulation, and reporting tasks with a simple pinch zoom, swipe pan, or double click.

ADVANCED EDGE TEACH

Improve edge detection performance under a variety of image and lighting conditions. Features with poor edge contrast, or difficult spacing can be captured in a snap using the M3's manual teach function. Press and hold on an edge in any video image to specify a teach region.



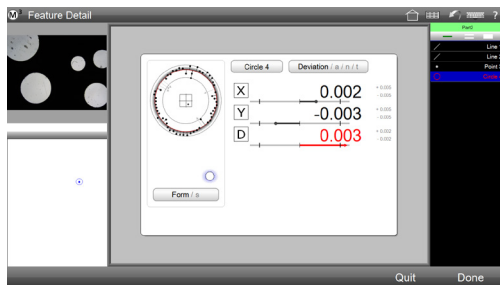
ADVANCED VIDEO PROBE TOOLBOX

The custom **EyeMeasure™** probe captures complex edges by creating a custom "tool zone" according to the finger path drawn on your touch screen enabled system.

The **MeasureLogic™** probe's intelligent design provides an instant feature determination and measurement with a single click or press

The **Vtouch™** probe provides industry first video touch probe functionality with simple acquisition of individual points on a feature's edge, just a single press or click away

The simple DXF Crosshair tool is always available for manual crosshair probing and can be translated or rotated within the video image for flexible manual probe measurements



GEOMETRIC TOLERANCING

Measure features, set nominals, apply tolerances and view deviation results with only a few quick clicks. You may also apply a variety of popular tolerance types to features in the standard "feature-to-feature" fashion, or utilize the "place tolerancing" system for applications where tolerances are specified in a block tolerance style call out. For these cases the M3 software let's you enter and apply universal tolerance values according to your feature resolution groupings.

Supported tolerances include:

- X/Y/Z Positional
- Diameter/Radius/Length/Width Size
- Theta (Angle)
- Form
- Parallelism
- Angularity
- True Position (LMC/MMC Modifiers)
- Straightness

OPTIONAL SOFTWARE ADDITION: THE M3 DIGITAL COMPARATOR

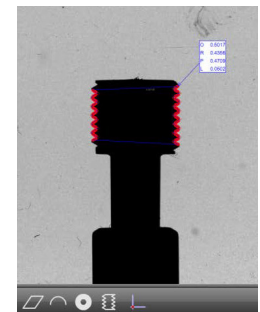
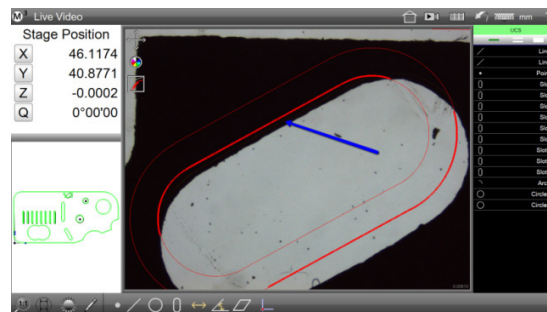
DXF Overlay and FOV capability.

Using the DXF/FOVE option pack, you may import DXF files for "comparative style" Go/No-Go feature and part inspection. This includes a live error whisker display for part violations of the original DXF tolerance zones. You may even utilize custom DXF crosshair files, create "on the fly" overlay feature tools, and utilize pattern recognition for part program playback.

DXF/FOV option pack features include:

- Custom DXF crosshair
- Create feature-based video overlays
- Import DXF overlay
- Export features to DXF
- Pattern teach and recognition
- Live image "freeze"

DXF BASED OVERLAY PART INSPECTION MADE SIMPLE!

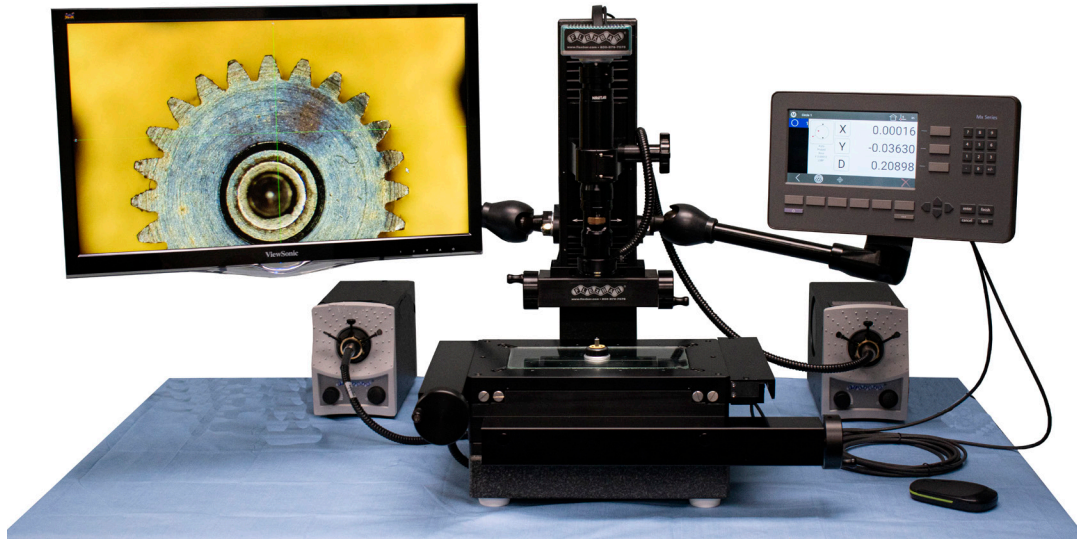


Also optional on request: **M3 thread Inspection module: 18-M3-Thread**



MetLogix, MeasureLogic, EyeMeasure, and Vtouch are trademarks of MetLogix, Inc.

OPTIFLEX MLX-2000 SERIES "GRANITE Z" VIDEO INSPECTION & MEASUREMENT SYSTEMS



Offering exceptional value for the money, these systems offer highly flexible and upgradeable capacity. The MLX-2000 Series are compact and easy to use turnkey systems packed with powerful features including state-of-the-art color video, quality zoom optics and the MetLogix Mx200 Geometric Digital Readout

SYSTEM FEATURES

- Solid granite frame guarantees accuracy & stability
- Superb full color hi-resolution 1080p image with zoom optics & LCD monitor
- Image capture allows for snapshots or movie
- Removable SD memory card
- Internal multicolored (4x) crossline generator
- Adjustable lens mount dovetail on Granite Z column
- Tooling holes on stage plate for fixturing
- Precision 8" x 4" or 12" x 12" crossed roller bearing stages are available
- LED lighting available
- Available Z-Axis measurement upgrade

System Versions:

- **MLX-2000**, Opti-Flex Mx200, 8" x 4" Measurement System, .5 Micron Scales
- **MLX-2000-12**, Opti-Flex MX200, 12" x 12" measurement system, .5 Micron Scales

MX200 DIGITAL READOUT

- Bright and crisp LCD with adjustable tilt
- Small footprint with ergonomic design
- Allows operators to accomplish simple to complex measurements quickly and easily
- Print measurement results using serial or parallel printer, PDF or CSV data files
- Part programming allows creation editing, and running of programs in measurement sequence
- Measure guide leads operators through each feature's measurement sequence to assure consistent data
- Measure a part once and operators can repeat the same steps indefinitely
- Measures circles, angles, points and lines
- Feature construction capabilities

Optional Upgrades:

18-BLF	Fiberoptic Bottom Light Pad with #18-12720 Litesource
18-TWINARMUP	Dual Arm Support System for monitor and DRO
18-UP2/3	QCZ-2000 3rd Axis Z Scale Upgrade
12360-UP	Upgrade halogen to LED Lighting

