

# LiteSurf™

## Surface Roughness Tester



The new **LiteSurf™** system from Flexbar features integrated Bluetooth and USB connection to Android Smartphones, Tablets and PC's allowing a quick and easy way to transmit surface roughness measurements. Thanks to the included Roughness Studio Basic APP, information can easily be stored and shared with the rest of the world.

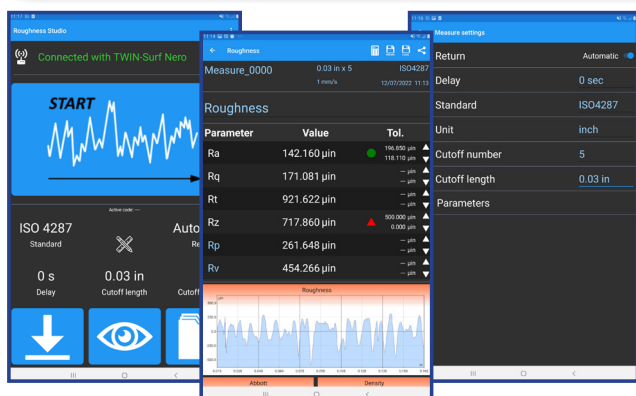
With this sophisticated hand-held instrument it is possible to measure surface roughness details in multiple positions horizontally, vertically, below and above. Through use of the 90 degree laterally rotatable preloaded probe, each area of the piece is measurable. A range of Interchangeable Accessory Probes are also available for special measurement applications.

The body of the **LiteSurf™** is machined from a solid block of a light alloy and combines an ABS plastic shell that guarantees high rigidity with high impact resistance. The device's integrated refill management system guarantees an autonomy of 10 hours of work time and at least 300 measurements within a 50 minute period.



### Key Features:

- Compact lightweight portable size. Easy-to-use, even in the toughest measuring conditions
- Custom report generation utilizing standard studio app
- Robust and reliable: light alloy machined with ABS plastics for production use
- Quick and easy charging. Full charge provides 10 work hours of use



The **LiteSurf™** roughness tester is supplied inside a robust and elegant suitcase that contains the instrument, the calibration specimen, the power supply and USB cable, the Ø8mm pin for fixing it onto the stand, the USB pen with the calibration certificate, the instruction manual and the basic version of the Roughness Studio App.

With the standard Roughness Studio APP, the instrument can be connected to an Android or Windows device and allows you to download measurement data in real time or at a later time from the internal memory of the roughness tester.

In addition, the APP allows the creation of diversified measurement codes for each type of product with different measurement settings, it automatically synchronizes the instrument's date and time and allows the measurement to be started remotely. The connection is made via Bluetooth or USB cable, the latter guarantees to perform measurements while the instrument recharges the battery.

# LiteSurf™



## Handheld Surfact Roughness Tester with Bluetooth Connection to Smartphone

**Model No. 15510 complete system** includes: LiteSurf™ roughness tester, USB charger, USB type C cable, 8mm diameter tail piece for mounting on the stand, roughness specimen with calibration certificate, transport case, manual



### Product Specifications

Dimensions:	6.3 x 1.34 x 1.32 in (160 x 34 x 33,5 mm)
Weight:	0.4 lbs (200g)
Measuring range:	250 μm (+ 50 μm - 200 μm) 0.01 in (+0.002 in - 0.008 in)
Resolution:	0.04 minch (0.001 μm)
Accuracy class:	1° ISO/DIN
Cut-off length:	0.01 - 0.03 - 0.1 in (0,25 - 0,8 - 2,5 mm)
Number of cut-off:	Selectable from 1 to 5
Probe:	Optical transduction system, 90° rotatable for lateral measurements 8 parameters (on board) ISO: Ra, Rq, Rt, Rz, Rc, Rmax, RSm, R Pc, MOTIF: Pt, R, AR, Rx, Ppc

Exploration travel:	Until 0.7 in (17.5 mm)
Measurement parameters:	44 parameters (with APP Roughness Studio PREMIUM) ISO: Ra, Rq, Rt, Rz, Rp, Rv, Rc, Rsk, Rku, RSm, RΔq, RΔa, Rmax, Rdc, Rmr, R Pc, RLo, Rlr, Rzjis, RHSC, R3z, hp, Ep JIS: Ra, Rq, Ry, RzJIS, tp, RSm, S ASME: Rp, Rpm, R Pc, Rsk, tp MOTIF: R, AR, Rx Rke, Rpke, Rvke, Mr1e, Mr2e, A1e, A2e
Unit of measure:	Millimeters and inches
Interface:	Monochrome OLED display and 3 waterproof membrane buttons
Language:	Italian, French, English, German, Spanish, Portuguese
Memory:	Approx.18000 parameters only (0.03 x 5 in) - Approx.30 with profile (0.03 x 5 in)
Autonomy:	10 hours of work and at least 300 measurements
Connectivity:	Integrated Bluetooth and USB, connection to Smartphone, Tablet and PC

### System Accessories

Probe SB21	Probe SB31	Probe SB121	Probe SB51	Extension: 100mm	Bluetooth thermal printer
15511 	15512 	15516 	15515 	15514 	15513 

Model No.	Description
15511	Plug-In Probe for plane surfaces, throats + shoulders. Max depth: 0.2 in (5mm)
15512	Probe for planes + holes. Hole diameter min: 4mm Max depth: 0.8in (20mm)
15516	Interchangeable Probe for throats + grooves, max depth: 0.8in (20mm)
15515	Standard Replacement Probe: with fore skids for plane or concave surfaces. Ideal to measure at 90°
15514	100mm Extension, to allow measurement of less accessible areas
15513	Bluetooth thermal printer allows you to print the values and graphs of the last roughness measurement carried out or of the memo that we have saved in the instrument. Equipped with a battery, it can be recharged by connecting it to any USB port thanks to the supplied cable.

All LiteSurf™ products are manufactured in Italy