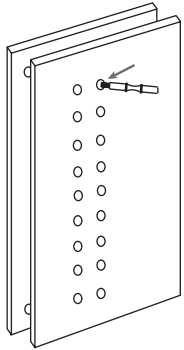


STEP 06

Plug & Play. Line up the faceplate and backer panel holes then proceed to secure the faceplate using the provided Ultra PEGs.



STEP 07

Congratulations! You have completed your Fusion Wine Wall Panel installation. Now it's time to pop a cork, sit back, and admire your handy work.



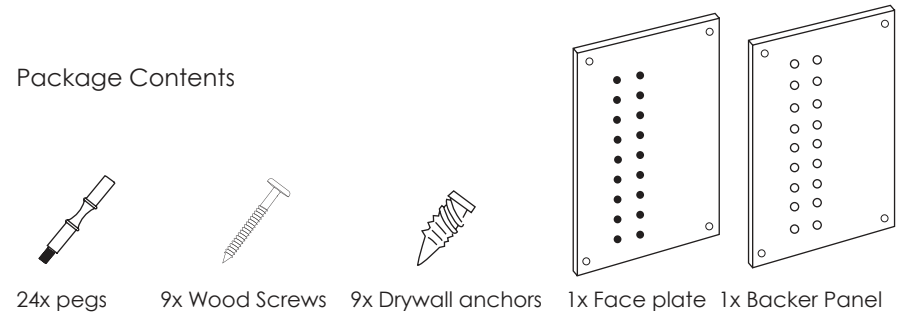
OLTRA™ FUSION WINE WALL

ULTRA FUSION HZ WINE WALL (4FT) INSTALLATION GUIDE

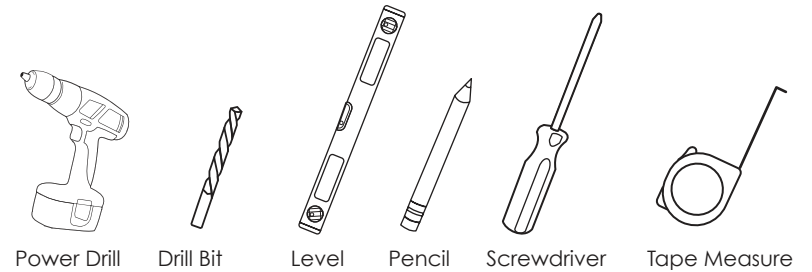
Important! Before installing Pegs do the following:

1. Check the Package Contents for missing or damaged items
Contact Customer Service at 1-(800) 343-9463 Ext: 802 for questions or concerns

Package Contents



Recommended Installation Tools (Not Included)



Recommended Fusion Applications:

Drywall anchors (included) - Use for installing rails to drywall if studs are not present in the desired location. Do not use drywall anchors to secure into a wall stud location.

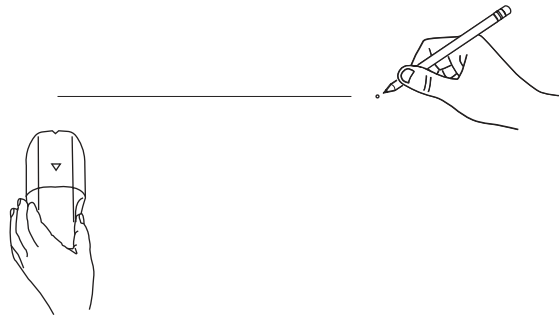
Wood Screws (included) - Use wood screw to secure wall studs or wood panels, do not use on drywall without securing to a stud. Concrete or Masonry applications not provided.

Concrete, Brick or Stucco (Not Included) - 3/16" x 1-1/4" Masonry Screw or #8x1-1/4" screw with the proper concrete anchors.

INSTALLATION INSTRUCTIONS

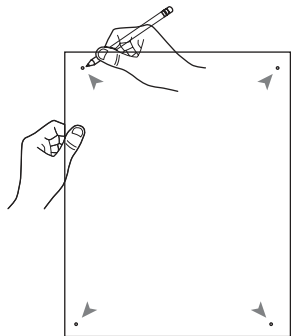
STEP 01

Use a stud finder map mounting locations. Then proceed to trace a level guideline to use as a guide of where to place your panel.



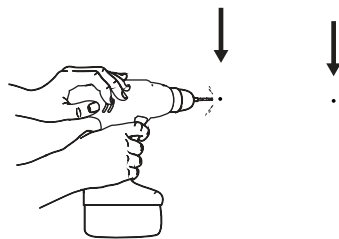
STEP 02

Place backer panel against wall in desired location.



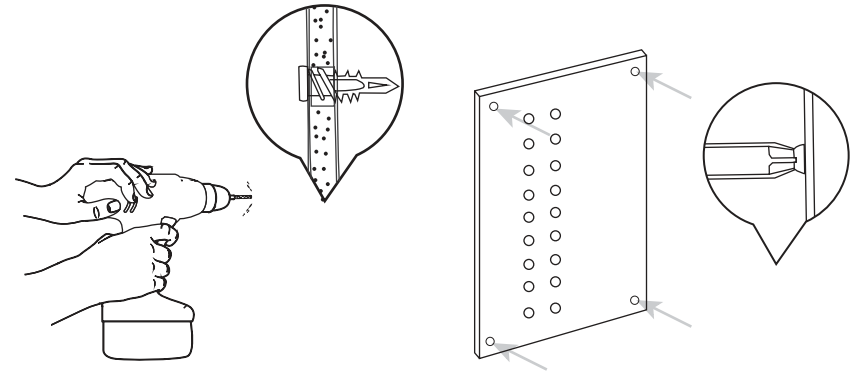
STEP 03

Use a level and 1/8" drill bit to mark mounting holes, and drill the pilot holes.



STEP 04

Drill drywall anchors into wall then mount backer panel with wood screws; if not mounting into drywall, directly secure the panel into stud with wood screw.



STEP 05

Remove protective film from the faceplate. (If applicable)

