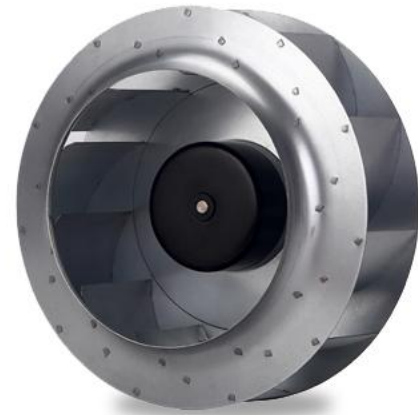


## 252118 Ø252mm X 118MM

### General Specifications

- ◆ Material..... Impeller: Galvanized metal Sheet  
Impeller Plate: Galvanized metal Sheet  
Lead Wire: AC(AWG20#) , DC(AWG22 #)
- ◆ Expected Life..... Ball Bearing 50,000hrs (40°C)
- ◆ Temperature Range.... Operating temperature -25°C~60°C  
(Non-condensing)
- ◆ Safety Standards..... RoHS , CE
- ◆ DC Fan Specials..... RD, FG, PWM, IPXX (available with special IP rating)
- ◆ Weight ..... 2770 g

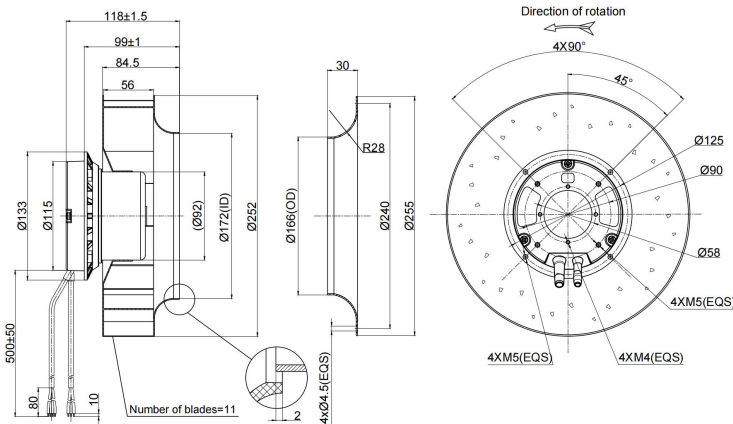


### Specifications

Model	#Bearing Type	Rated Voltage	Operating Voltage	Input Current	Input Power	Speed	Max Air Flow		Max Static Pressure		Noise	Weight
Part No.	B	VAC	VDC	Amp	Watt	RPM	CFM	m <sup>3</sup> /min	Inch-H <sub>2</sub> O	mmH <sub>2</sub> O	dB-A	g
sECF252118V2MB	B	230	184~270	1.13	155.0	2780	1001.0	28.33	2.87	73.01	75.00	2770

Specifications are subject to change without notice. Please visit our website at <http://www.sofasco.com> for update information

### Dimensions (Unit:mm)



### PQ Curve (At rated Voltage)

