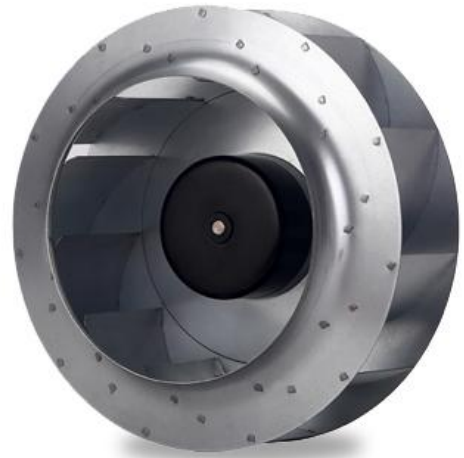


250156 Ø250mm X 156.5mmMM

General Specifications

- ◆ Material..... Impeller: Galvanized metal Sheet
Impeller Plate: Injection-moulded round sheet-metal plate Lead Wire: AC(AWG20#) , DC(AWG22 #)
- ◆ Expected Life..... Ball Bearing 50,000hrs (40°C)
- ◆ Temperature Range.... Operating temperature -25°C~60°C (Non-condensing)
- ◆ Safety Standards..... RoHS , CE
- ◆ DC Fan Specials..... RD, FG, PWM, IPXX (available with special IP rating)
- ◆ Weight 4200 g

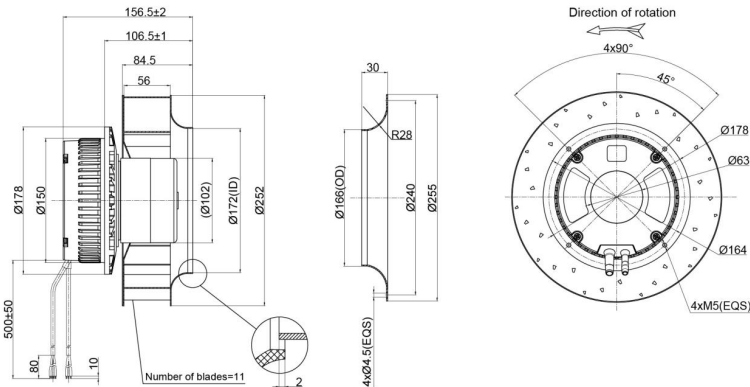


Specifications

Model	#Bearing Type	Rated Voltage	Operating Voltage	Input Current	Input Power	Speed	Max Air Flow		Max Static Pressure		Noise	Weight
Part No.	B	VAC	VDC	Amp	Watt	RPM	CFM	m ³ /min	Inch-H ₂ O	mmH ₂ O	dB-A	g
sECF250156V2HB	B	230	184~270	1.72	387.0	3550	1212.31	34.33	4.14	105.03	80.00	4200

Specifications are subject to change without notice. Please visit our website at <http://www.sofasco.com> for update information

Dimensions (Unit:mm)



PQ Curve (At rated Voltage)

