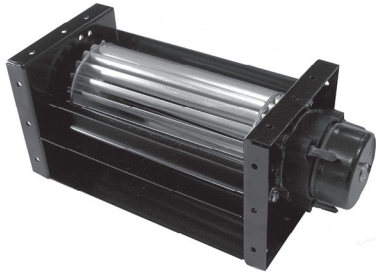


sDF

40

Ø40mm(Ø1.58")



HOUSING Metal/Aluminum
IMPELLER Aluminum, Ø40mm
BEARING Ball
OPERATING TEMPERATURE 0°C to + 45°C
DIELECTRIC STRENGTH 5mA Max. at 500 VAC for 1 minute
INSULATION RESISTANCE 10M Ω min. @500 VDC
MOTOR TYPE DC Brushless Motor
ROHS COMPLIANCE Yes
IP LEVEL IP21 (Special IP Rating On Request)

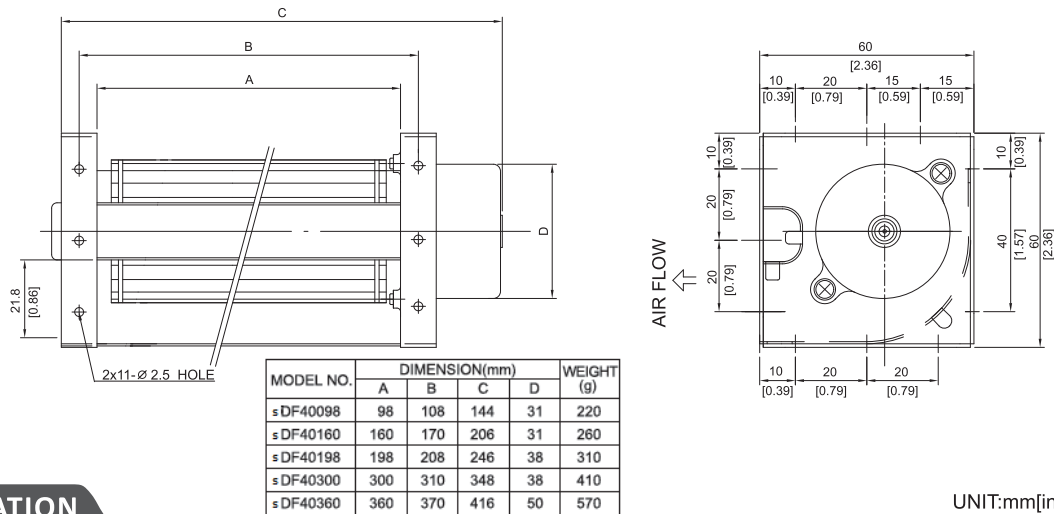
* FAN IS FOR HORIZONTAL USE ONLY *

40

mm

40 mm

DIMENSION



SPECIFICATION

UNIT:mm[inch]

| MODEL NO. | RATED VOLTAGE (V) | RATED CURRENT (A) | INPUT POWER (W) | SPEED (RPM) | MAX. AIR PRESSURE | | MAX. AIR FLOW | | NOISE dB(A)@ 1M |
|--------------|-------------------|-------------------|-----------------|-------------|----------------------|--------------------|---------------|---------------------|-----------------|
| | | | | | inchH ₂ O | mmH ₂ O | CFM | m ³ /min | |
| sDF40098V12H | 12 | 0.20 | 2.4 | 3000 | 0.11 | 2.9 | 24 | 0.7 | 33 |
| sDF40098V24H | 24 | 0.15 | 3.6 | 3000 | 0.11 | 2.9 | 24 | 0.7 | 33 |
| sDF40160V12H | 12 | 0.25 | 3.0 | 2600 | 0.10 | 2.6 | 35 | 1.0 | 31 |
| sDF40160V24H | 24 | 0.20 | 4.8 | 2600 | 0.10 | 2.6 | 35 | 1.0 | 31 |
| sDF40198V12H | 12 | 0.30 | 3.6 | 2500 | 0.10 | 2.5 | 49 | 1.4 | 33 |
| sDF40198V24H | 24 | 0.20 | 4.8 | 2500 | 0.10 | 2.5 | 49 | 1.4 | 33 |
| sDF40300V12H | 12 | 0.45 | 5.4 | 2700 | 0.09 | 2.4 | 81.2 | 2.3 | 40 |
| sDF40300V12M | 12 | 0.40 | 4.8 | 2300 | 0.10 | 2.5 | 74 | 2.1 | 33 |
| sDF40300V24H | 24 | 0.35 | 8.4 | 2800 | 0.09 | 3.3 | 95 | 2.7 | 43 |
| sDF40300V24M | 24 | 0.25 | 6.0 | 2300 | 0.08 | 2.0 | 74 | 2.1 | 33 |
| sDF40360V12H | 12 | 0.60 | 7.2 | 2600 | 0.08 | 2.1 | 106 | 3.0 | 42 |
| sDF40360V24H | 24 | 0.40 | 9.6 | 2600 | 0.08 | 2.1 | 106 | 3.0 | 42 |

AIR PERFORMANCE

