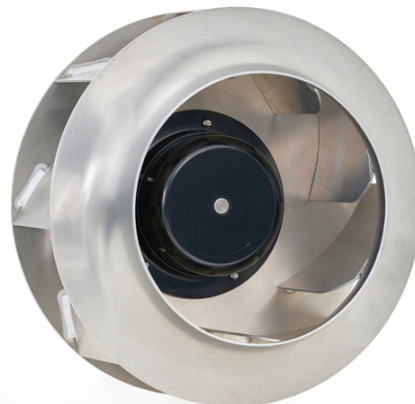


## 252210 Ø252mm X 210.5MM

### General Specifications

- ◆ Material..... Impeller: Metal  
Impeller Plate: Injection-moulded round sheet-metal plate
- ◆ Expected Life..... Ball Bearing 50,000hrs (40°C)
- ◆ Temperature Range.... Operating temperature -25°C ~ 60°C  
(Non-condensing)
- ◆ Safety Standards..... RoHS , CE
- ◆ EC Fan Specials..... RD, FG, PWM, Voltage speed Control, IPXX  
(available with special IP rating)

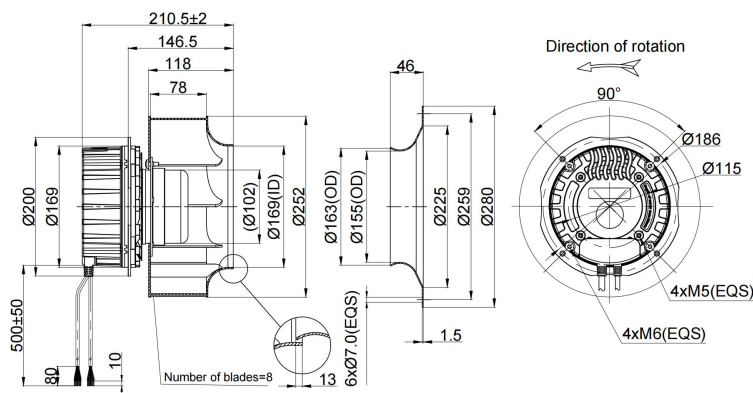


### Specifications

Model	#Bearing Type	Rated Voltage	Operating Voltage	Input Current	Input Power	Speed	Max Air Flow		Max Static Pressure		Noise
Part No.	B	VAC	VDC	Amp	Watt	RPM	CFM	m <sup>3</sup> /min	Inch-H <sub>2</sub> O	mmH <sub>2</sub> O	dB-A
sECF252210V3HBL	B	380	320~460	1.17	750.00	4100	1765.73	50.00	5.62	142.76	91,00

Specifications are subject to change without notice. Please visit our website at <http://www.sofasco.com> for update information

### Dimensions (Unit:mm)



### PQ Curve (At rated Voltage)

