

133mm BACKWARD CURVED CENTRIFUGAL FANS WITH SUPPORT BRACKET

INFORMATION

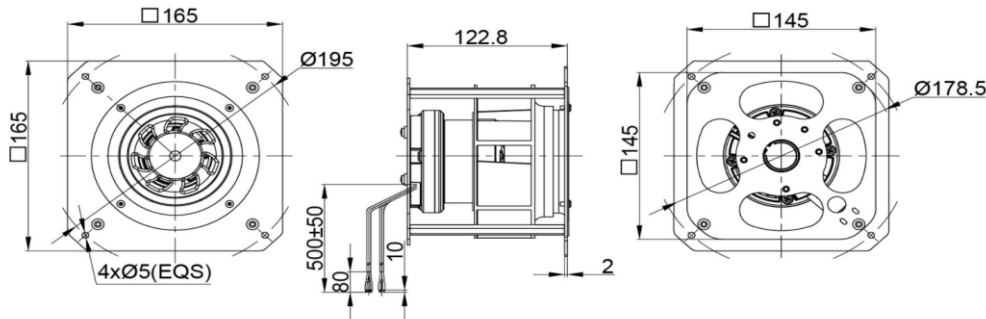
IMPELLER: PA66+GF
BLADE NO.: 7 BLADES
BEARING: NMB BALL BEARING
LEAD WIRES Red, Blue(AWG18#); Yellow, White(AWG24#)
INSULATION : CLASS B
OPERATING TEMPERATURE: -25°C to 60°C
SPEED CONTROL CONTROL INPUT 0~10VDC / PWM
LIFE EXPECTANCE 50,000 Hours at At 40°C
SIGNAL OUTPUT FG (Frequency Generator)
RoHS COMPLIANCE Yes.
IP LEVEL IP55 (Special IP Rating On Request)



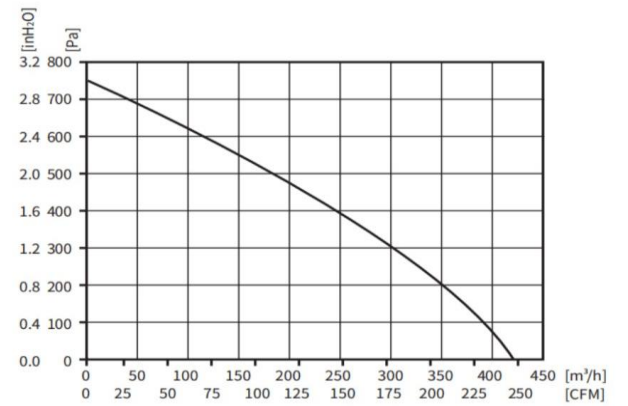
SPECIFICATION

MODEL NO.	RATED VDC	OPERATED VOLTAGE (VDC)	SPEED (RPM)	RATED CURRENT (A)	INPUT POWER (W)	Max. M ³ /H	Air Flow CFM	Max. Static inch-H ₂ O	Pressure PA	Noise Level dB(A)
ECFK165122V48HB-PB	48	36~57	5000	1.05	50	420	247.17	3.00	750	71

DRAWING:



PQ CURVE:



Specifications are subject to change without notice. Please visit our website at <http://www.sofasco.com> for update information.