



机型 MODEL: DCF17568V48MBL-FG-PWM

品名 NAME: DC Brushless Impeller

版本: A0 India

<b>Editor</b>	<b>Checked</b>	<b>Approval</b>
Freddy Yu	/	/

<b>Customer Name</b>		
<b>Customer Recognition</b>	<b>Acceptance</b>	<b>Approval</b>

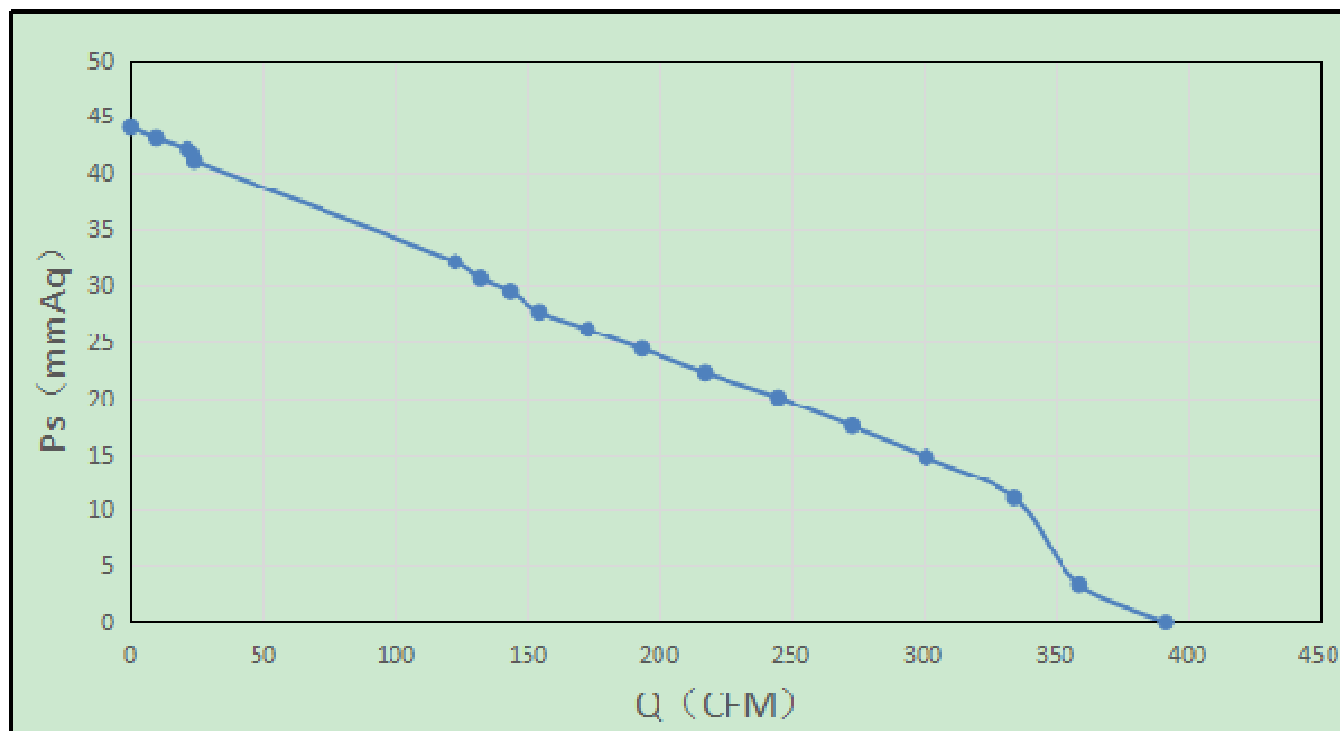
#### NO.1 更改记录 Revision History

<b>Version</b>	<b>Content</b>	<b>Name</b>	<b>Date</b>

## NO. 2 数据表 Data Sheet

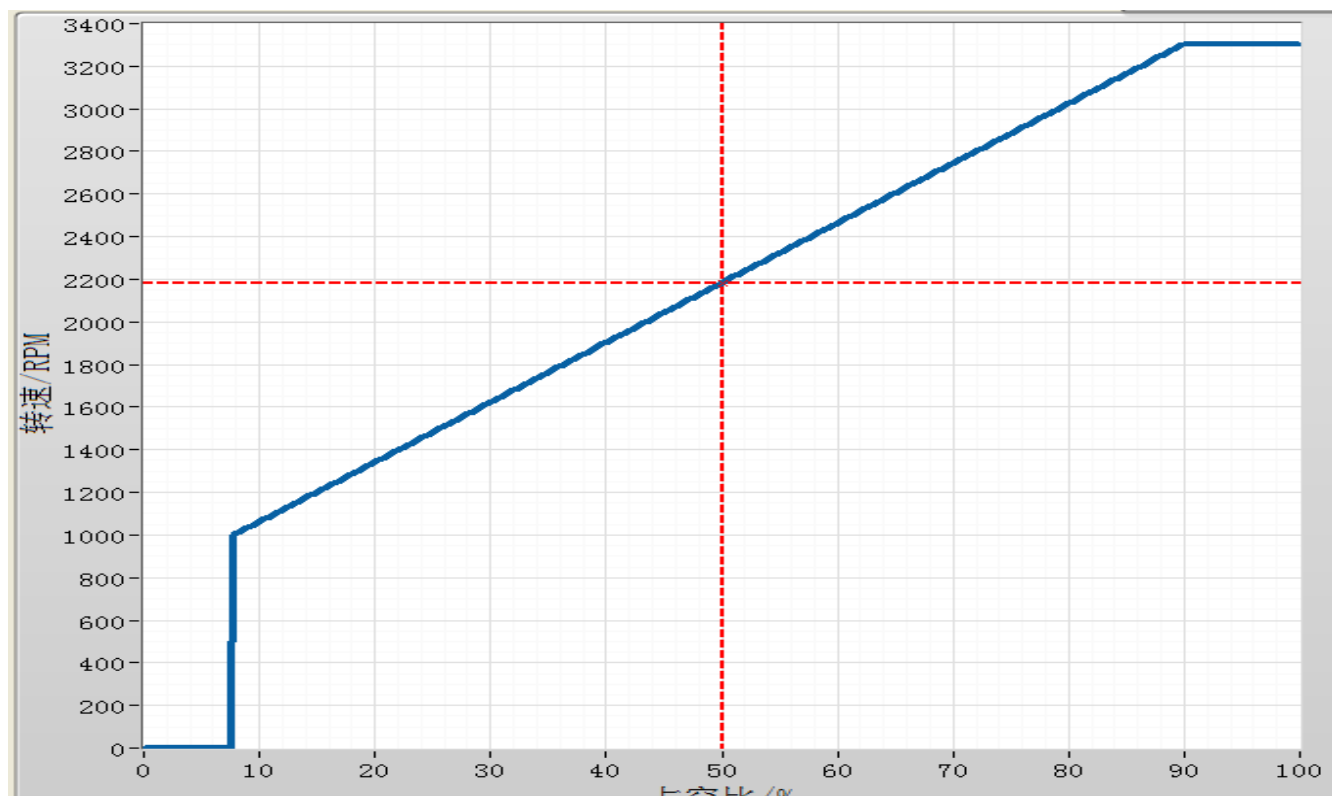
Customer:	Date: 2018-03-31
Model: PI4817562HB2M	Version:A0
<b>SPECIFICATIONS</b>	
1、 Bearing System	2 Ball Bearing (C&U)
2、 Rated Voltage	48VDC
3、 Operating Voltage	36~56VDC
4、 Starting Voltage	36VDC
5、 Input Current	1.2A
6、 Input Power	57.6W
7、 Rated Speed	3300RPM
8、 Rotation	clockwise, seen on rotor
9、 Air Flow	392.02CFM (666.5 m <sup>3</sup> /h)
10、 Static Air Pressure	1.73inH <sub>2</sub> O (43.94mmH <sub>2</sub> O)
11、 Soft Start	Yes
12、 Speed Control	PWM(1-10kHz) or 0~10VDC(Isink max=10 mA)
13、 Tachometer Output	Open collector, 3 pulses/Rev
14、 Auto Restart	Yes
15、 Alarm Output	No
16、 Noise Level	64dB (A) Max
17、 Lead Wire	UL, AWM1007, AWG20#, L=500mm
18、 Connector	No
19、 Ambient temperature	-20~60° C
20、 Life Expectance	40,000Hours continuous operating at 25° C
21、 Insulation class	“A”
22、 Operation mode	Continuous operation (SI)
23、 Type of protection	IP42
24、 Number of blades	7
25、 Dielectric Strength	1500VAC, 1 min, Leakage current≤5 mA
26、 Net Weight	770g
27、 Packing	Corrugated carton, pcs/carton

### NO. 3 性能曲线图 Performance Curves



Airflow-CFM

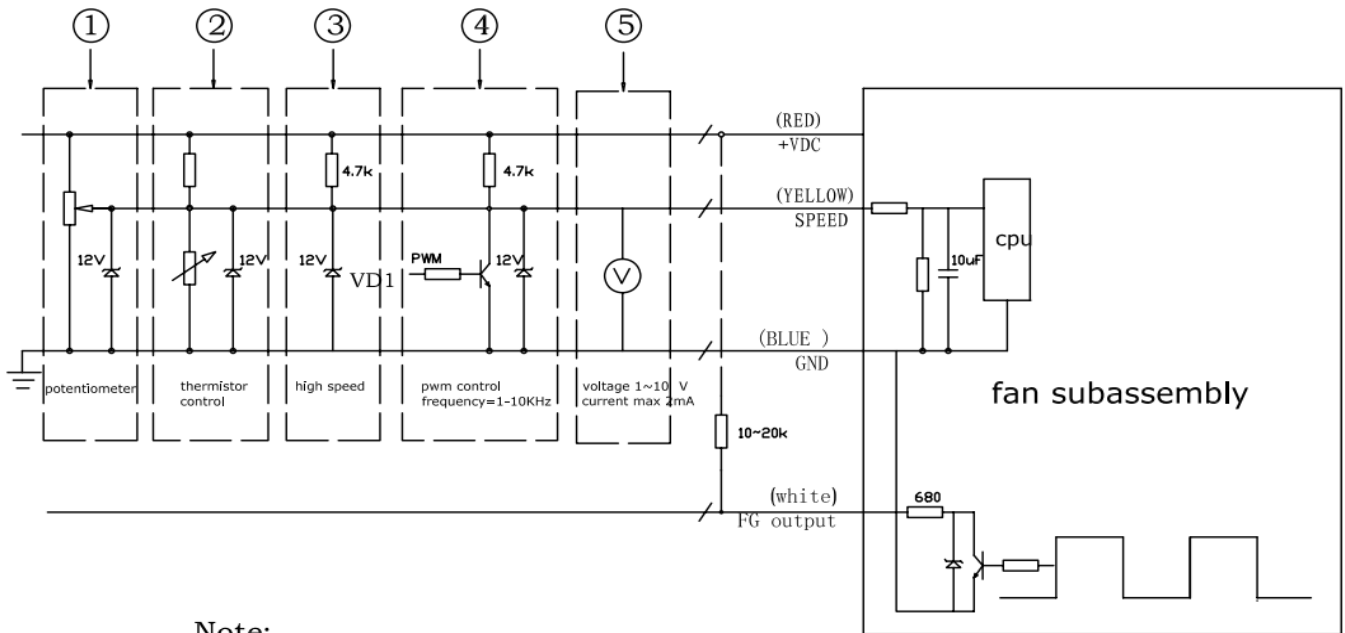
### NO. 4 PWM 与转速曲线 PWM Vs RPM Curve



占空比 PWM %

Input PWM 频率范围: 300hz-30Khz (The Input PWM frequency range: 300hz-30Khz)

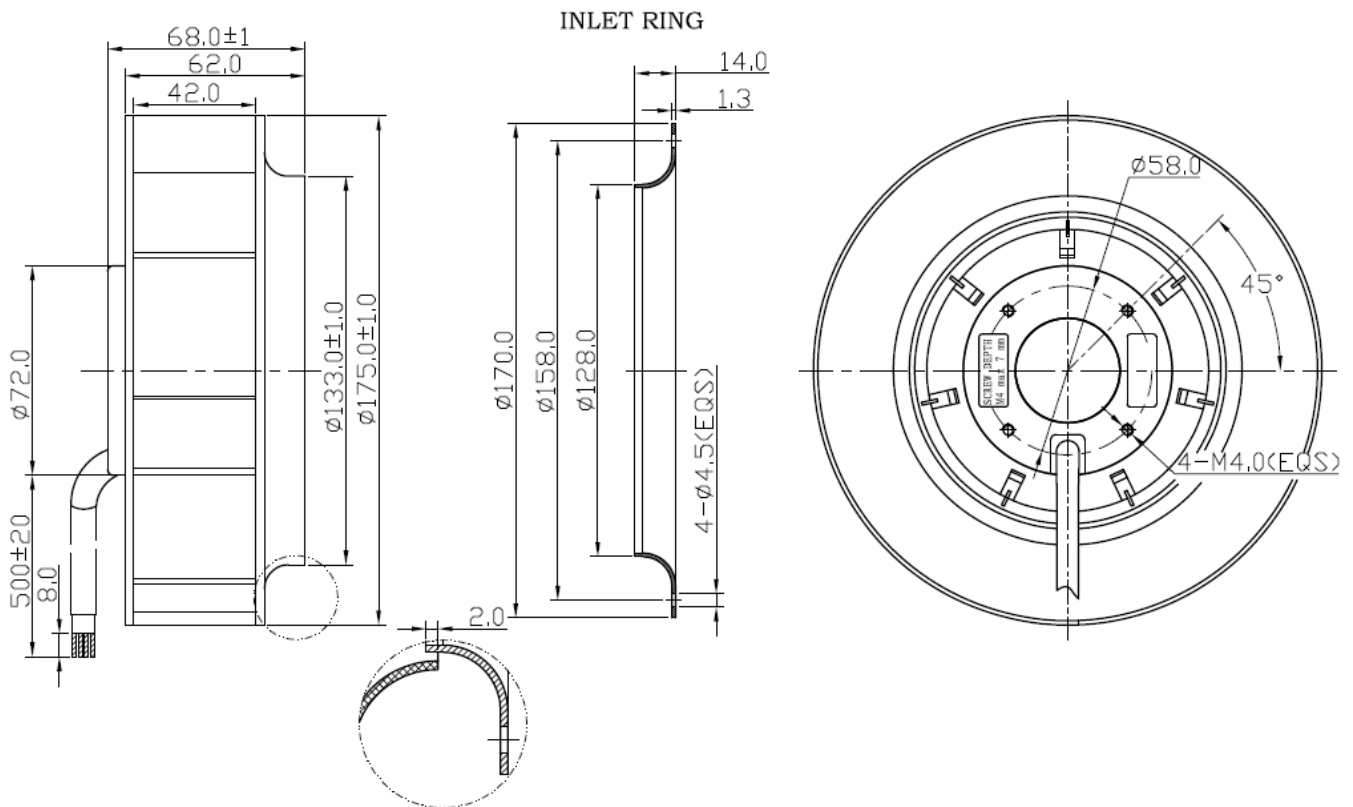
## NO.5 连接方式 Connection Methods



Note:

1. Above outside circuit connecting sketches are the five kinds of most common speed control circuits;
2. The third connecting method has not speed adjusting function. You don't need to connect it with VD1 component when voltage under or at 12V.
3. FG signal wire can not contact with the "+" and "-" lead wire.

## NO.6 外形图 Product Outline



Note: The intel ring not included in the standard scope of delivery. According to the sales order to determine whether equipped with.