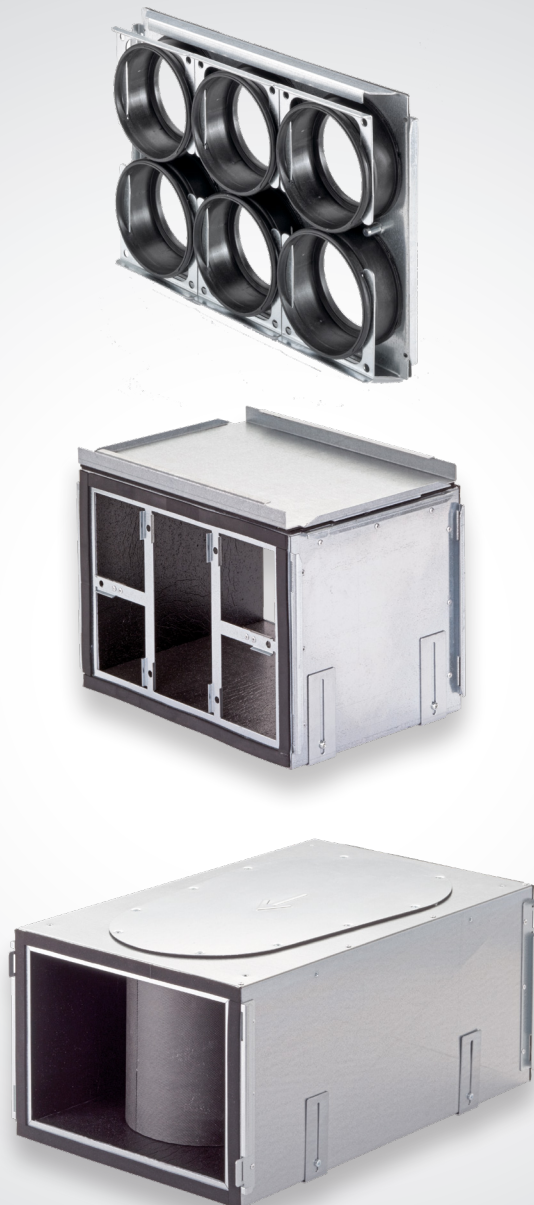


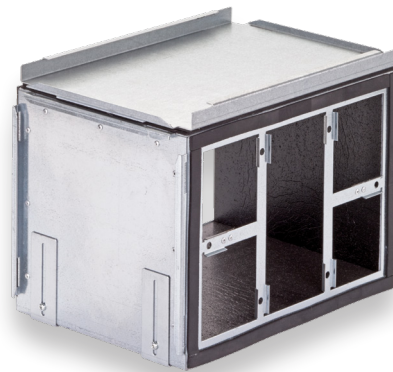
Zehnder ComfoWell 320



Comfowell 320

The Zehnder ComfoWell 320 is a modular system consisting of attenuators, fine grade filters and active carbon filters all integrated for use with a rigid or semi-rigid ductwork approach. With a width of 320mm it can be used for connecting up to 6 ComfoTube connections. The systems compact dimensions ensure good sound absorption and also make it easy to clean. Rigid pipe can be connected to the end plate securely by utilising the gasket seal connection. All other components are fitted using the locking slide connections to form an air tight and robust seal.

Noise reduction can be improved by combining two attenuators together. Filters are available in ISO ePM1 >80% (F7) or ISO ePM1 >90% (F9) grade in addition to an odour neutralising active carbon filter.



Key Features

- Attenuator, fine grade filter, active carbon filter and manifold all combined into one space saving combination with the option to bespoke build exactly what is required.
- Easy to assemble thanks to its modular and compact design.

Article Numbers

Description	Product Code
Attenuator	
Zehnder ComfoWell attenuator, CW-S 320	990 323 501
Manifold	
Zehnder ComfoWell manifold box CW-D 320	990 323 531
Filter Housing	
Zehnder ComfoWell filter housing CW-F 320	990 323 551
Mounting Plates	
Zehnder ComfoWell mounting plate, CW-M 320, 6 x 75mm connections	990 323 612
Zehnder ComfoWell mounting plate, CW-M 320, 6 x 90mm connections	990 323 613
Zehnder ComfoWell mounting plate, CW-M 320, 2 x 90mm + 4 x 75mm connections	990 323 616
End Plates	
Zehnder ComfoWell end plate, CW-P 320, ø 125mm	990 323 511
Zehnder ComfoWell end plate, CW-P 320, ø 150mm	990 323 562
Zehnder ComfoWell end plate, CW-P 320, ø 160mm	990 312 512
Zehnder ComfoWell end plate, CW-P 320, ø 180mm	990 312 527

Article Numbers

Spacer Frame

Zehnder ComfoWell spacer frame, CW-DF 320	990 323 538
---	-------------

Mounting Set

Zehnder ComfoWell mounting set, CW-K 320, for Zehnder ComfoAir 160	990 323 570
Zehnder ComfoWell mounting set, CW-K 320, for Zehnder ComfoAir 200	990 323 517
Zehnder ComfoWell mounting set, CW-K 320, for Zehnder ComfoAir Q350	990 323 647

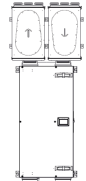

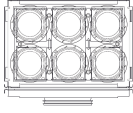
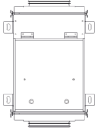

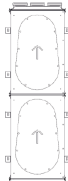
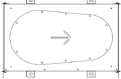
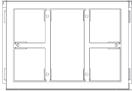

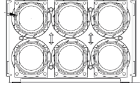
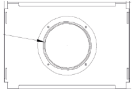
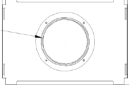
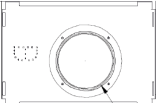
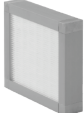
Filters

Filter for ComfoWell 320, CW-F7 320, ISO ePM1 >80% (F7), 1 Piece	990 323 603
Filter for ComfoWell 320, CW-F9 320, ISO ePM1 >90% (F9), 1 Piece	990 323 604
Filter for ComfoWell 320, CW-AC 320, active carbon filter, 1 Piece	990 323 605

Technical Specification

Housing material	Galvanised Sheet Steel
Operating temperature range	-25 to +60 °C
Inner lining	Closed-cell melamine resin foam
Recommended maximum air volume	66.6l/s (240 m ³ /h) at normal ventilation level
Air tightness class to EN 1507:2006	B
Air tightness class to EN 12237:2003	B
Fire rating to ISO13501	C

Example Connections

<p>Combination Options</p> <p>Individual Components</p>	<p>ComfoAir 200 Left handed with mounting set, 2 x attenuators and 2 x 6 port ø 75mm mounting plates</p> 	<p>Stand alone attenuator with 2 x ø 160mm end plates</p> 	<p>Stand alone manifold with 1 x ø 125mm end plate and 6 x ø 75mm mounting plate</p> 	<p>Stand alone filter housing with 2 x ø 160m end plate</p> 	<p>Stand alone attenuator and manifold combined with 1 x ø 160mm end plate and 6 x ø 75mm mounting plate</p> 	<p>Stand alone 2 x attenuator with 1 x ø 160mm end plate and 6 x ø 75mm mounting plate</p> 
<p>Silencer</p>  <p>Article Number: 990 323 501</p>	<p>2 x Zehnder ComfoWell attenuator, CW-S 320</p>	<p>1 x Zehnder ComfoWell attenuator, CW-S 320</p>	<p>—</p>	<p>—</p>	<p>1 x Zehnder ComfoWell attenuator, CW-S 320</p>	<p>2 x Zehnder ComfoWell attenuator, CW-S 320</p>
<p>Manifold Box</p>  <p>Article Number: 990 323 531</p>	<p>—</p>	<p>—</p>	<p>1 x Zehnder ComfoWell manifold box, CW-D 320</p>	<p>—</p>	<p>—</p>	<p>—</p>
<p>Filter Housing</p>  <p>Article Number: 990 323 551</p>	<p>—</p>	<p>—</p>	<p>—</p>	<p>1 x Zehnder ComfoWell filter housing, CW-F 320</p>	<p>—</p>	<p>—</p>
<p>Mounting Plate - ø75</p>  <p>Article Number: 990 323 612</p>	<p>2 x Zehnder ComfoWell mounting plate, CW-M 320, 6 x 75mm connections</p>	<p>—</p>	<p>1 x Zehnder ComfoWell mounting plate, CW-M 320, 6 x 75mm connections</p>	<p>—</p>	<p>1 x Zehnder ComfoWell mounting plate, CW-M 320, 6 x 75mm connections</p>	<p>1 x Zehnder ComfoWell mounting plate, CW-M 320, 6 x 75mm connections</p>
<p>End Plate - ø 125</p>  <p>Article Number: 990 323 511</p>	<p>—</p>	<p>—</p>	<p>1 x Zehnder ComfoWell end plate, CW-P 320, ø 125mm</p>	<p>—</p>	<p>—</p>	<p>—</p>
<p>End Plate - ø160</p>  <p>Article Number: 990 323 512</p>	<p>—</p>	<p>2 x Zehnder ComfoWell end plate, CW-P 320, ø 125mm</p>	<p>—</p>	<p>2 x Zehnder ComfoWell end plate, CW-P 320, ø 160mm</p>	<p>1 x Zehnder ComfoWell end plate, CW-P 320, ø 160mm</p>	<p>1 x Zehnder ComfoWell end plate, CW-P 320, ø 160mm</p>
<p>Mounting Set 200</p>  <p>Article Number: 990 323 517</p>	<p>1 x Zehnder ComfoWell mounting set, CW-K 320, for Zehnder ComfoAir 160</p>	<p>—</p>	<p>—</p>	<p>—</p>	<p>—</p>	<p>—</p>
<p>Filter</p>  <p>Article Number: 990 323 604</p>	<p>—</p>	<p>—</p>	<p>—</p>	<p>1 x Filter for ComfoWell 320, CW-F9 320, ISO ePM1 >90% (F9), 1 Piece</p>	<p>—</p>	<p>—</p>

Dimensions

Zehnder ComfoWell attenuator, CW-S 320

Article number: 990 323 501

Description

Attenuator:

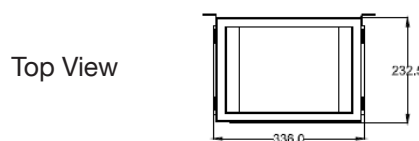
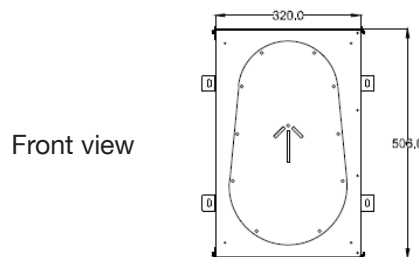
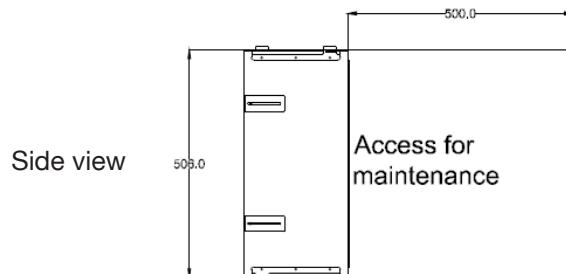
Zehnder ComfoWell attenuator CW-S 320. Rectangular compact attenuator with highly efficient sound insulation combined with low pressure losses. The attenuator can be used individually or in combination with all ComfoWell components. The airtight connection between components is via a clamping strip.

For cleaning purposes the sound absorbing element can be removed.

Mounting on the wall or ceiling is done using the supplied fully adjustable installation mounts.

Dimensions

Height	506mm
Width	336mm
Depth	232.5mm
Weight	6.6 kg



Zehnder ComfoWell manifold box CW-D 320

Article number: 990 323 531

Description

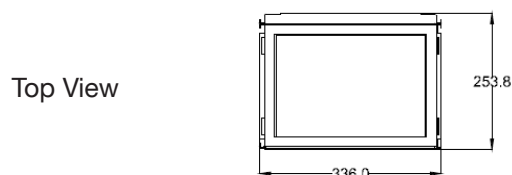
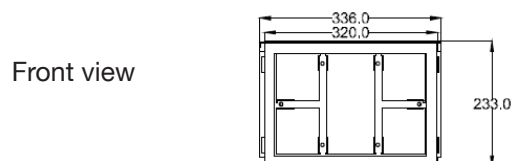
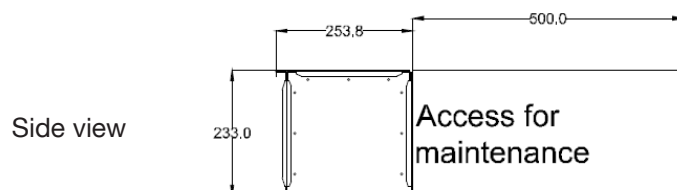
Manifold Box:

Zehnder ComfoWell manifold box CW-D 320. Rectangular compact design with closed pore internal lining. Suitable for use with the mounting plate for ComfoTube 75mm x 6 connections, 90mm x 6 connections or a combination of 90mm x 2 and 75mm x 4 connections. The mounting plate can be mounted on the top or side of the manifold box. The airtight connection between components is via a clamping strip.

For cleaning purposes the manifold box side plate can be removed for easy access. Mounting on the wall or ceiling is done using the supplied fully adjustable installation mounts.

Dimensions

Height	233mm
Width	336mm
Depth	253.8mm
Weight	4.52 kg



Dimensions

Zehnder ComfoWell filter housing CW-F 320

Article number: 990 323 551

Description

Filter Housing:

Zehnder ComfoWell filter housing CW-F 220. Rectangular compact design for use with a fine pollen filter graded ISO ePM1 >80% (F7), a fine dust filter graded ISO ePM1 >90% (F9) or an active carbon filter to neutralise odours in the supply air duct run.

The filter elements are not included with the filter housing and need to be purchased separately. The filter housing can be used individually or in combination with all ComfoWell components. The airtight connection between components is via a clamping strip.

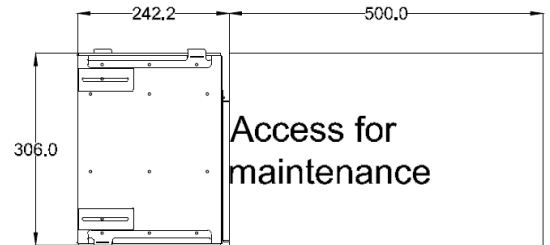
Mounting on the wall or ceiling is done using the supplied fully adjustable installation mounts.

Dimensions

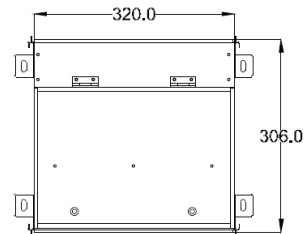
Height	306mm
Width	336mm
Depth	242.2mm
Weight	4.73 kg



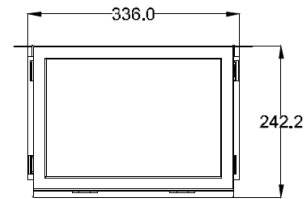
Side view



Front view



Top View



Zehnder ComfoWell mounting plate CW-M 320

Article number: 990 323 612

Description

Mounting Plate:

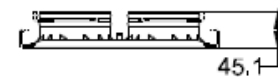
Zehnder ComfoWell mounting plate CW-M 320-6 x 75. Manifold mounting plate for connection of 6 x ComfoTube 75mm semi-rigid ducting. The mounting plate includes a protective film and the necessary mounting accessories.

Dimensions

Height	45.1mm
Width	336mm
Depth	230mm
Weight	<1.53 kg



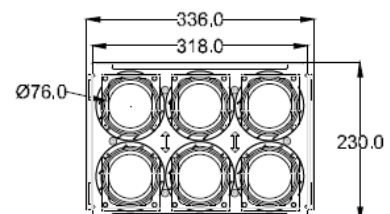
Side view



Front view



Top View



Dimensions

Zehnder ComfoWell mounting plate CW-M 320

Article number: 990 323 613

Description

Mounting Plate:

Zehnder ComfoWell mounting plate CW-M 320-6 x 90. Manifold mounting plate for connection of 6 x ComfoTube 90mm semi-rigid ducting. The mounting plate includes a protective film and the necessary mounting accessories.

Dimensions

Height	45.1mm
Width	336mm
Depth	230mm
Weight	<1.53 kg



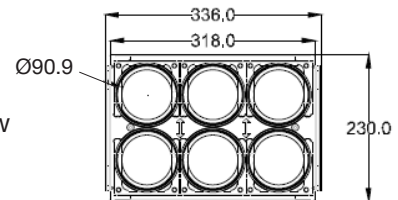
Side view



Front view



Top View



Zehnder ComfoWell mounting plate CW-M 320

Article number: 990 323 616

Description

Mounting Plate:

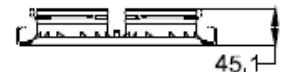
Zehnder ComfoWell mounting plate CW-M 2 x 90 and 4 x 75. Manifold mounting plate for connection of 2 x 90 and 4 x 75 semi-rigid ducting. The mounting plate includes a protective film and the necessary mounting accessories.

Dimensions

Height	45.1mm
Width	336mm
Depth	230mm
Weight	<1.53 kg



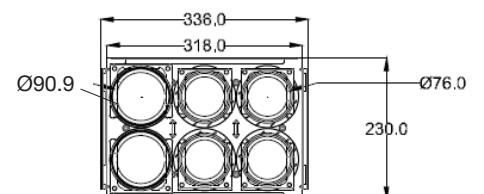
Side view



Front view



Top View



Dimensions

Zehnder ComfoWell end plate CW-P 320 -Ø 125

Article number: 990 323 511

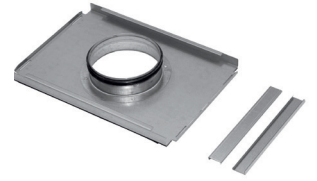
Description

End Plate:

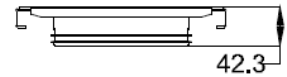
Zehnder ComfoWell end plate CW-P 320 - DN125 (with centre connection) for the connection to the ComfoWell attenuator/manifold box or filter housing to the matching ducting size required. The end plate includes the necessary mounting accessories.

Dimensions

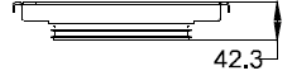
Height	42.3mm
Width	336mm
Depth	230mm
Diameter	125mm



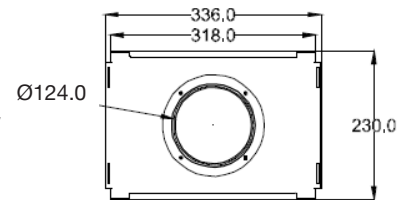
Side view



Front view



Top View



Zehnder ComfoWell end plate CW-P 320 -Ø 150mm

Article number: 990 323 562

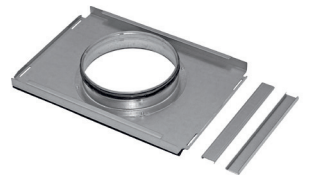
Description

End Plate:

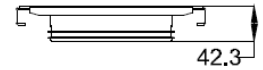
Zehnder ComfoWell end plate CW-P 320 - DN150 (with centre connection) for the connection to the ComfoWell attenuator/manifold box or filter housing to the matching ducting size required. The end plate includes the necessary mounting accessories.

Dimensions

Height	42.3mm
Width	236mm
Depth	230mm
Diameter	150mm



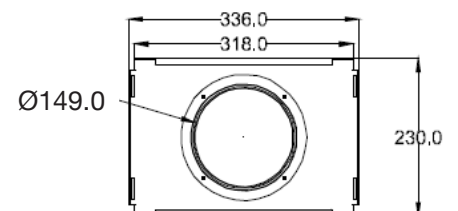
Side view



Front view



Top View



Dimensions

Zehnder ComfoWell end plate CW-P 320 -Ø 160mm

Article number: 990 323 512

Description

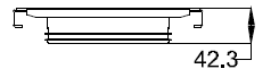
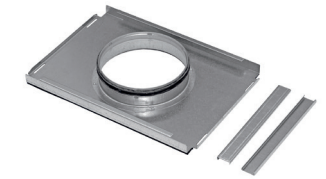
End Plate:

Zehnder ComfoWell end plate CW-P 320 - DN160 (with centre connection) for the connection to the ComfoWell attenuator/manifold box or filter housing to the matching ducting size required. The end plate includes the necessary mounting accessories.

Dimensions

Height	42.3mm
Width	236mm
Depth	230mm
Diameter	160mm

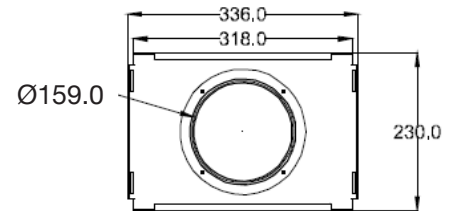
Side view



Front view



Top View



Zehnder ComfoWell end plate CW-P 320 -Ø 180mm

Article number: 990 323 527

Description

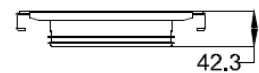
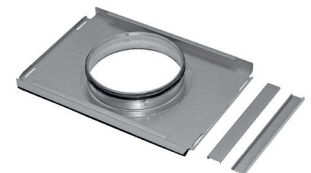
End Plate:

Zehnder ComfoWell end plate CW-P 320 - DN180 (with centre connection) for the connection to the ComfoWell attenuator/manifold box or filter housing to the matching ducting size required. The end plate includes the necessary mounting accessories.

Dimensions

Height	42.3mm
Width	236mm
Depth	230mm
Diameter	180mm

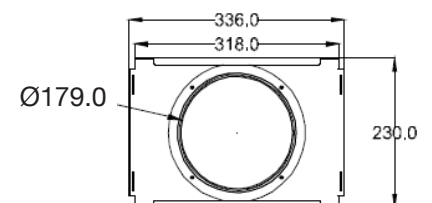
Side view



Front view



Top View



Dimensions

Zehnder ComfoWell spacer frame, CW-DF 320

Article number: 990 323 538

Description

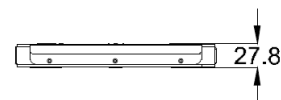
Zehnder ComfoWell spacer frame CW-DF320. Rectangular frame for use in the event of uneven surfaces when connecting components and mounting plate (concreted in place) are at 90 degrees. The spacer frame includes the necessary mounting accessories.

Dimensions

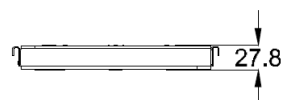
Height	27.8mm
Width	336mm
Depth	230mm
Weight	1.02 kg



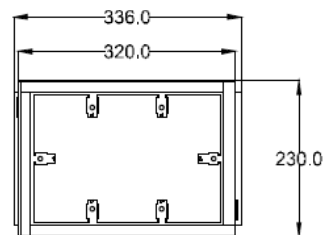
Side view



Front view



Top View



Zehnder ComfoWell mounting set, CW-K 320, for Zehnder ComfoAir 160

Article number: 990 323 570

Description

Mounting set:

A special mounting set is available for the Zehnder ComfoWell 320 for direct mounting to the ComfoAir 160 ventilation unit.

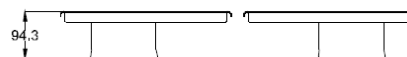
The mounting set includes all the necessary accessories (screws, brackets and mounting brackets)



Side view



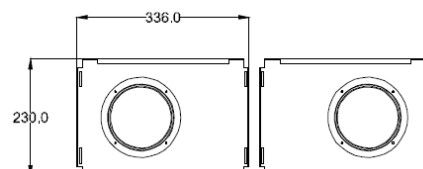
Front view



Dimensions

Height	94.3mm
Width	336mm
Depth	230mm
Weight	2.3 kg

Top View



Dimensions

Zehnder ComfoWell mounting set, CW-K 320, for Zehnder ComfoAir 200

Article number: 990 323 517

Description

Mounting set:

A special mounting set is available for the Zehnder ComfoWell 320 for direct mounting to the ComfoAir 200 ventilation unit.

The mounting set includes all the necessary accessories (screws, brackets and mounting brackets)

Side view



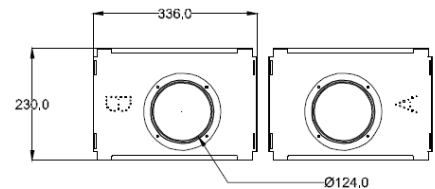
Front view



Dimensions

Height	42mm
Width	336mm
Depth	230mm
Weight	1.8 kg

Top View



Zehnder ComfoWell mounting set, CW-K 320, for Zehnder ComfoAirQ 350

Article number: 990 323 647

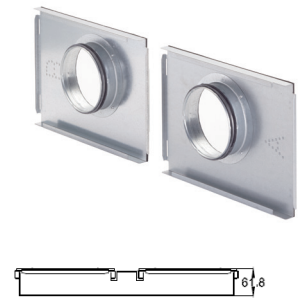
Description

Mounting set:

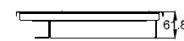
A special mounting set is available for the Zehnder ComfoWell 320 for direct mounting to the ComfoAir Q 350 ventilation unit.

The mounting set includes all the necessary accessories (screws, brackets and mounting brackets)

Side view



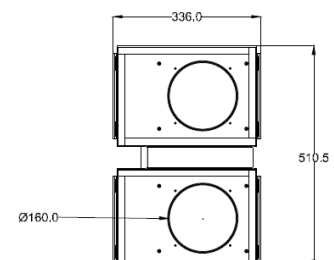
Front view



Dimensions

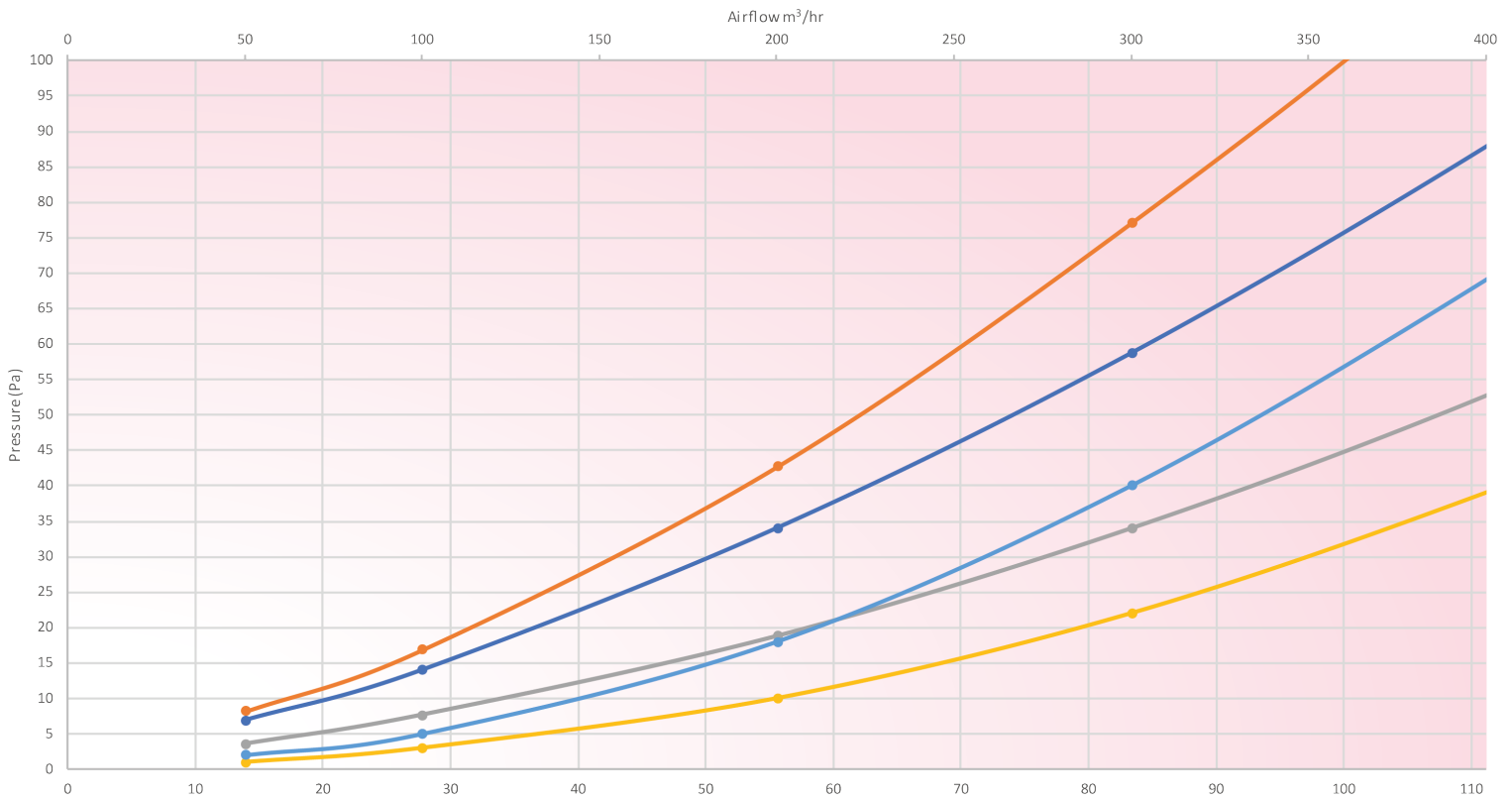
Height	61.8mm
Width	336mm
Depth	510.5mm
Weight	3.5 kg

Top View



Pressure Curve

Comfowell 320



- 1 x Attenuator (CW-S 320) with 2 x 160mm end plates (CW-P 320)
 — 1 x Filter housing (CW-F 320) with 2 x 160mm end plates (CW-P 320) and filter (CW-F7 320)
- 2 x Attenuator (CW-S 320) stacked with 2 x 160mm end plates (CW-P 320)
 — 1 x Filter housing (CW-F 320) with 2 x 160mm end plates (CW-P 320) and filter (CW-AC 320)
- 1 x Filter housing (CW-F 420) with 2 x 160mm end plates (CW-P 420) and filter (CW-F9 320)

Sound Data

Comfowell 320

Combination	Octave Band (Hz) Insertion Loss, dB							
	63	125	250	500	1000	2000	4000	8000
1 x Attenuator (CW-S 320) with 2 x 160mm end plates (CW-P 320)	4,6	5,6	9,2	6,5	4,6	23,0	17,4	23,8
2 x Attenuator (CW-S 320) stacked with 2 x 160mm end plates (CW-P 320)	6,0	10,4	17,8	14,1	13,6	47,4	36,8	34,9

For use with

Our range of Comfowell units can be used in conjunction with our Zehnder ComfoTube ø 75mm and ø 90mm semi-rigid ductwork.



**TO VIEW OUR COMFOTUBE
INFORMATION**

CLICK HERE

BIM/CAD Components

If you would like to download the BIM / CAD files for this or any other of our products then please visit our BIM library.

TO VISIT OUR BIM/CAD LIBRARY

CLICK HERE

Installation Instructions

If you would like to download the installation files for this or any other of our products then please visit our download page by following the link below.

TO VISIT OUR DOWNLOAD PAGE

CLICK HERE

Consultant specification

Specification

The semi-rigid ductwork manifold shall be constructed of galvanised sheet steel with a closed-cell melamine resin foam inner lining to prevent dust collection and have a fire class C rating according to EN ISO13501.

It shall be of modular construction with options to combine attenuators, manifold box, filter housing with ISO ePM1 >80% (F7), ISO ePM1 >90% (F9) or active carbon filters and end plates ranging from ø 125mm to ø 200mm.

It shall have the option of a mounting set for direct connection to the mechanical ventilation with heat recovery unit. The components shall be tested to BS EN 1507:2006 and BS EN 12237:2003 for airtightness and have removable elements to provide access for cleaning.