

Zehnder GD9 220x90 mm

Rectangular Pre-Insulated Ductwork

Product data sheet

always the best climate



GD9 220x90 mm

The Zehnder 220 mm x 90 mm self-seal insulated ducting is perfect for meeting Building Regulations for insulation whilst minimising air leakage. The lightweight and robust ductwork along with the self-seal connection mean this can be installed much faster than conventional rockwool insulation.

The PUSH - CLICK - LOCK connection eliminate the need for tape, sealant and screws and also exceeds the requirements set out in [DW/143](#) Class A Leakage Test and [DW/154](#) ductwork standards and has also been independently tested by the BRE.

The ductwork is compatible with our standard 200 mm x 90 mm PVC ductwork.



Key Features

- Easy and quick to install
- Airtight
- Compliant with Building Regulations
- Independently tested by the BRE
- Simple PUSH - CLICK - LOCK connection
- Lightweight and easy to handle
- No sealant or tape required
- Wide range of size options
- Suitable for use with standard PVC ductwork
- Flame retardant to [DIN 4102 B1](#)

Article Numbers

Description	Product Code
GD rectangular ducting, insulated GD9 duct, 220 mm x 90 mm x 1 m	GD901.1I
GD rectangular ducting, insulated GD9 duct, 220 mm x 90 mm x 2 m	GD901.2I
GD rectangular ducting, insulated GD9 to ø 125 mm adaptor with 90° bend	GD903I
GD rectangular ducting, insulated GD9 to ø 160mm adaptor with 90° bend	GD908I
GD rectangular ducting, insulated GD9 to ø 160mm straight adaptor	GD907I
GD rectangular ducting, insulated GD9 90° horizontal bend	GD905I
GD rectangular ducting, insulated GD9 45° horizontal bend	GD916I
GD rectangular ducting, insulated GD9 90° vertical bend	GD906I
GD rectangular ducting, insulated GD9 45° vertical bend	GD917I
GD rectangular ducting, insulated GD9 horizontal T-piece	GD910I
GD rectangular ducting, GD9 self-seal coupling, duct to fitting, for insulated system	GD917SSCI
GD rectangular ducting, GD9 self-seal coupling, duct to duct, for insulated system	GD918SSCI

Technical Specification

Material	Graphite impregnated expanded polystyrene (EPS)
Operating temperature range	-15 to +60°C
Minimum density	25 kg/m ³
Free area	19,752 mm ²
Thermal conductivity	0.03 W/mK
Thickness	20 mm
Thermal Resistance	0.666 m ² K/W
Fire Rating in accordance with DIN 4102-1	B1
Meets BASF-EN13163	Yes
Exceed DW/143 Class A leakage test	Yes
Meets DW/154 ductwork standard	Yes

GD rectangular ducting, insulated GD9 duct, 220 mm x 90 mm

Article number: GD901.1I / GD901.2I

Description

Insulated duct:

Insulated duct available in 1 m or 2 m lengths. Each length comes complete with a single duct to duct connector ([GD918SSCI](#)) to fit into the next straight length of duct. Suitable for use with GD901 220 mm x 90 mm PVC ductwork.

Technical Specification

Height	130 mm
Width	260 mm
Length	1000 mm / 2000 mm
Weight	0.502 kg / 1.004 kg

Dimensions

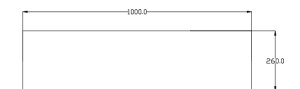
GD901.1I
Front View



GD901.1I
Side View



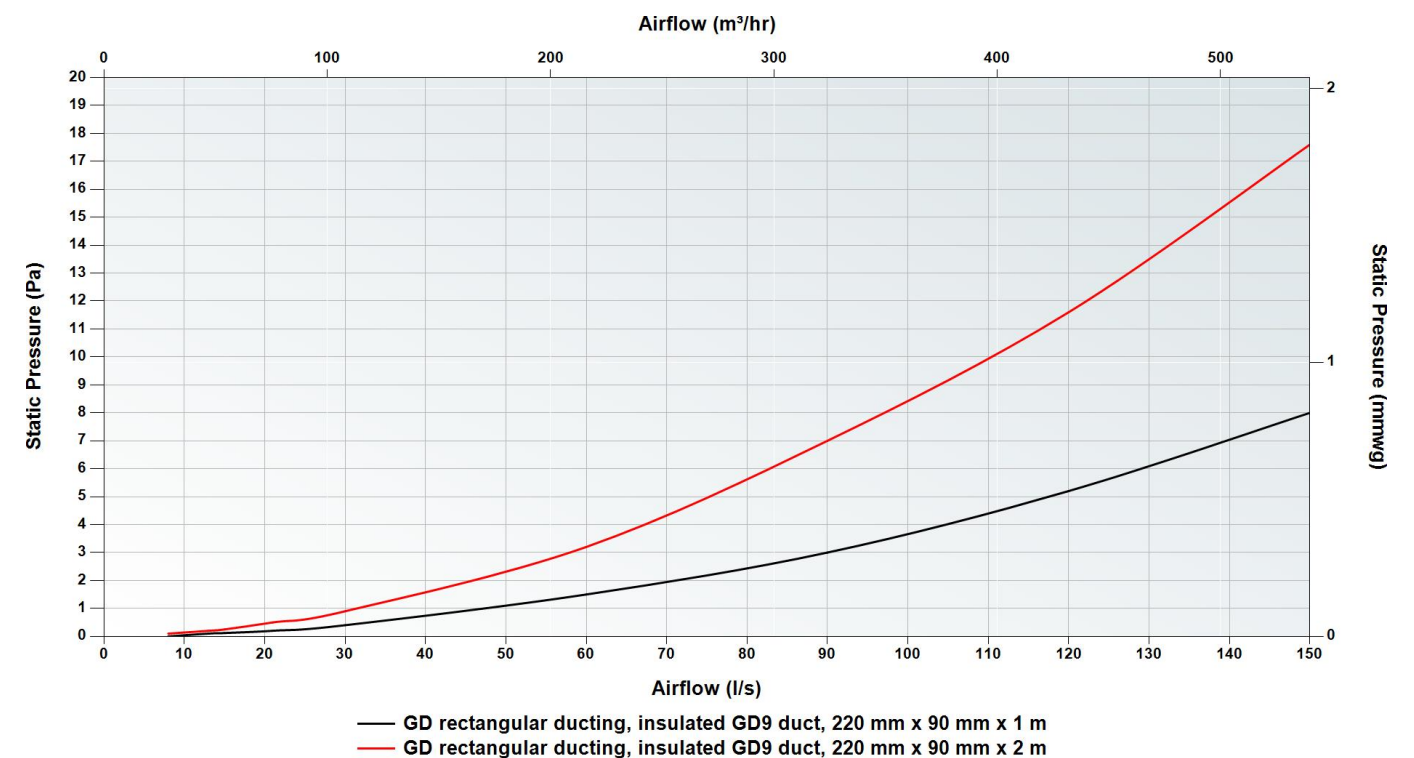
GD901.1I
Top View



GD901.2I
Top View



Pressure Curve





GD9 to ø 125 mm adaptor with 90° bend

Article number: GD903I

Description

Insulated rectangular to round adaptor:

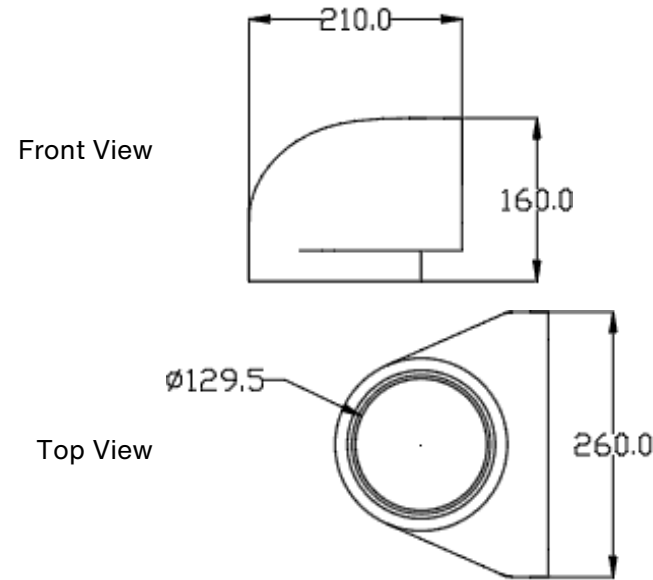
Insulated rectangular to round adaptor with 90° bend to convert from rectangular 220 mm x 90 mm to ø 125 mm. Each adaptor comes complete with a 220 mm x 90 mm duct to fitting connector (GD917SSCI) and a ø 125 mm duct to fitting connector (GD818SSCI) to securely connect to a straight length of insulated duct.

Technical Specification

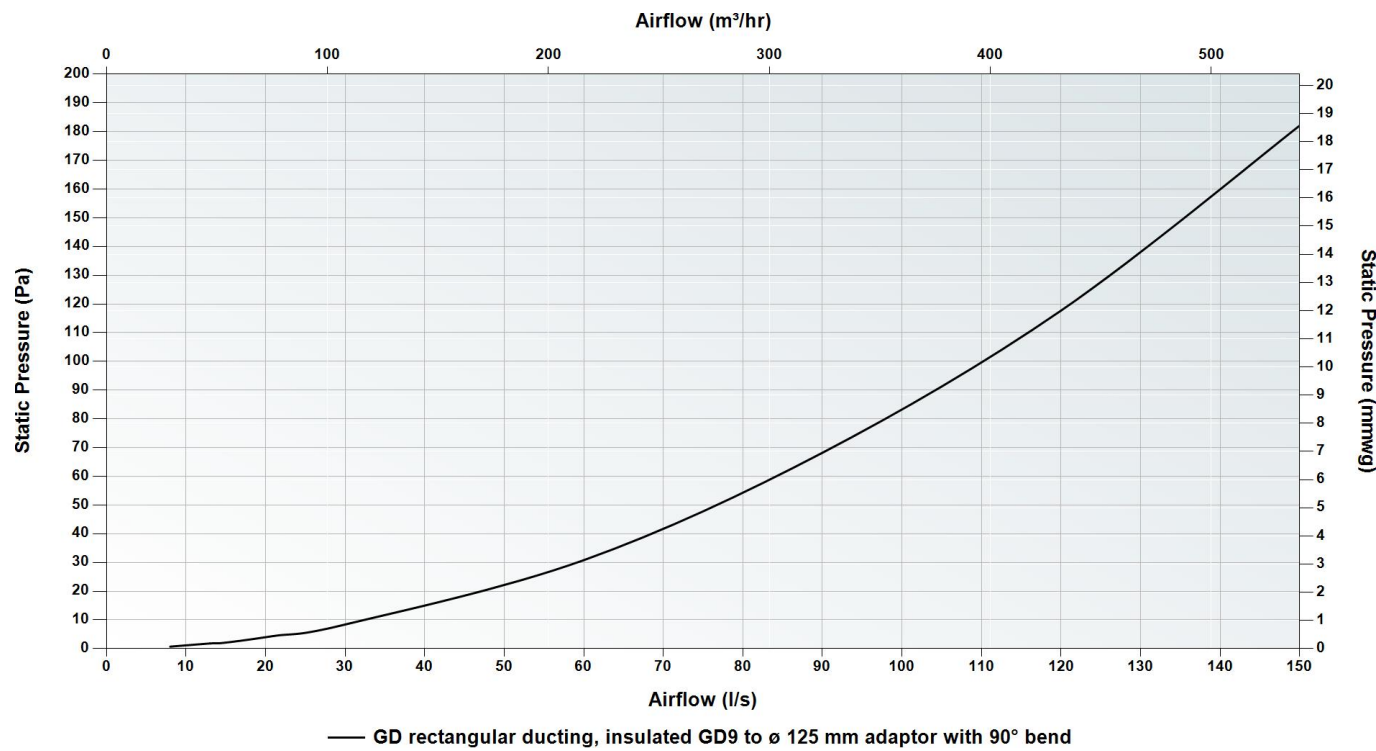
Height	160 mm
Width	260 mm
Depth	210 mm
Weight	0.216 kg



Dimensions



Pressure Curve



GD rectangular ducting, insulated GD9 to ø 160mm adaptor with 90° bend

Article number: GD908I

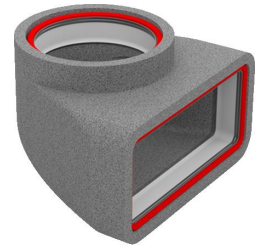
Description

Insulated rectangular to round adaptor:

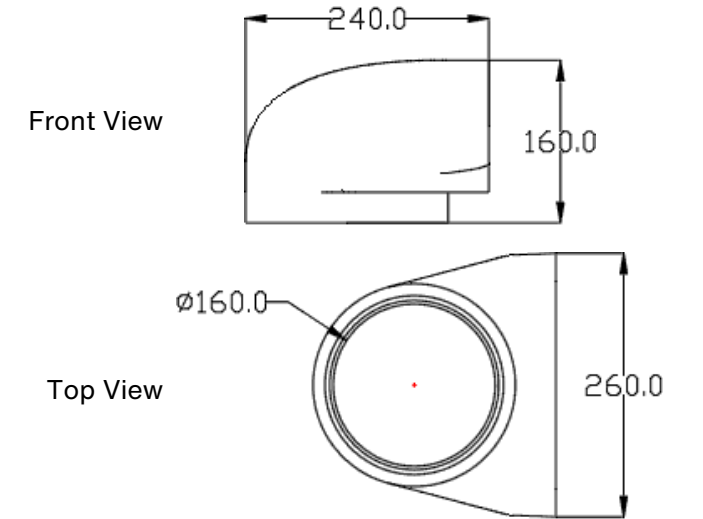
Insulated rectangular to round adaptor with 90° bend to convert from rectangular 220 mm x 90 mm to ø 160 mm. Each adaptor comes complete with a 220 mm x 90 mm duct to fitting connector (GD917SSCI) and a ø 125 mm duct to fitting connector (GD932SSCI) to securely connect to a straight length of insulated duct.

Technical Specification

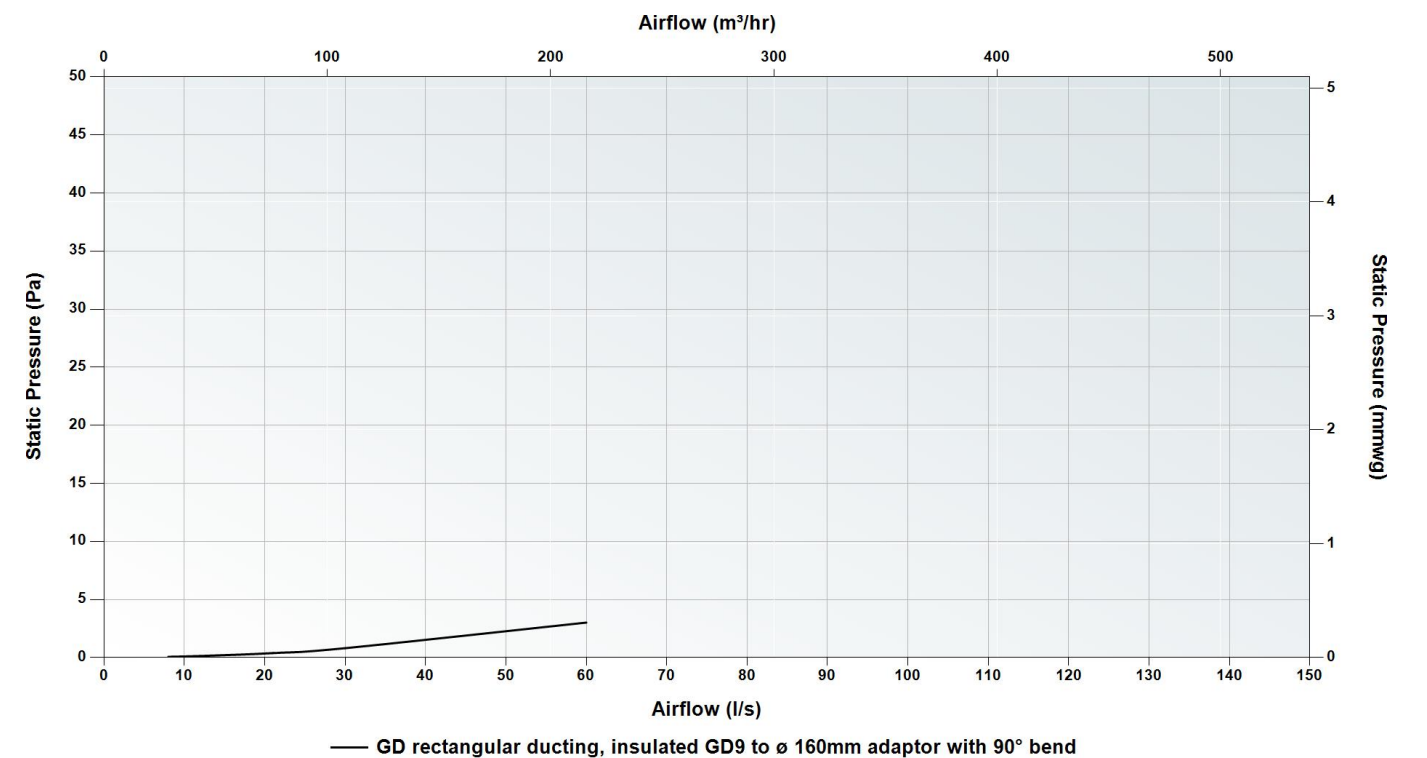
Height	160 mm
Width	260 mm
Depth	240 mm
Weight	0.6 kg



Dimensions



Pressure Curve





GD rectangular ducting, insulated GD9 to ø 160mm straight adaptor

Article number: GD9071

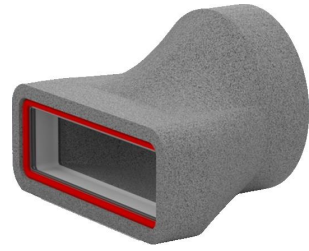
Description

Insulated rectangular to round adaptor:

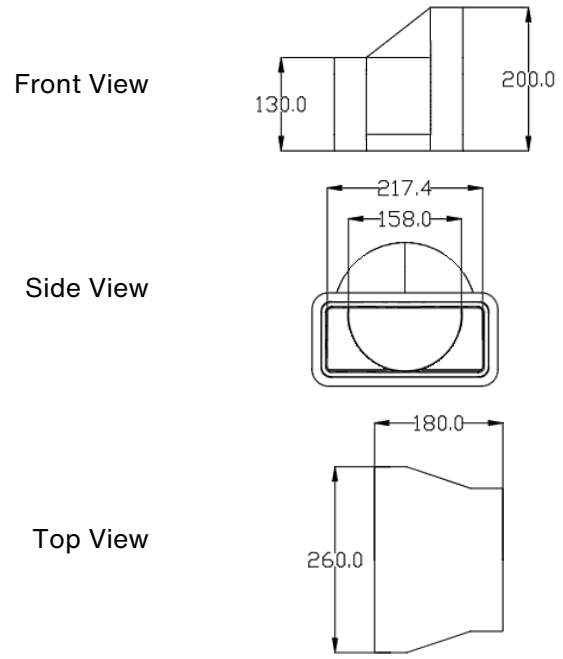
Insulated rectangular to round adaptor to convert from rectangular 220 mm x 90 mm to ø 160 mm. Each adaptor comes complete with a 220 mm x 90 mm duct to fitting connector (GD917SSCI) and a ø 125 mm duct to fitting connector (GD932SSCI) to securely connect to a straight length of insulated duct.

Technical Specification

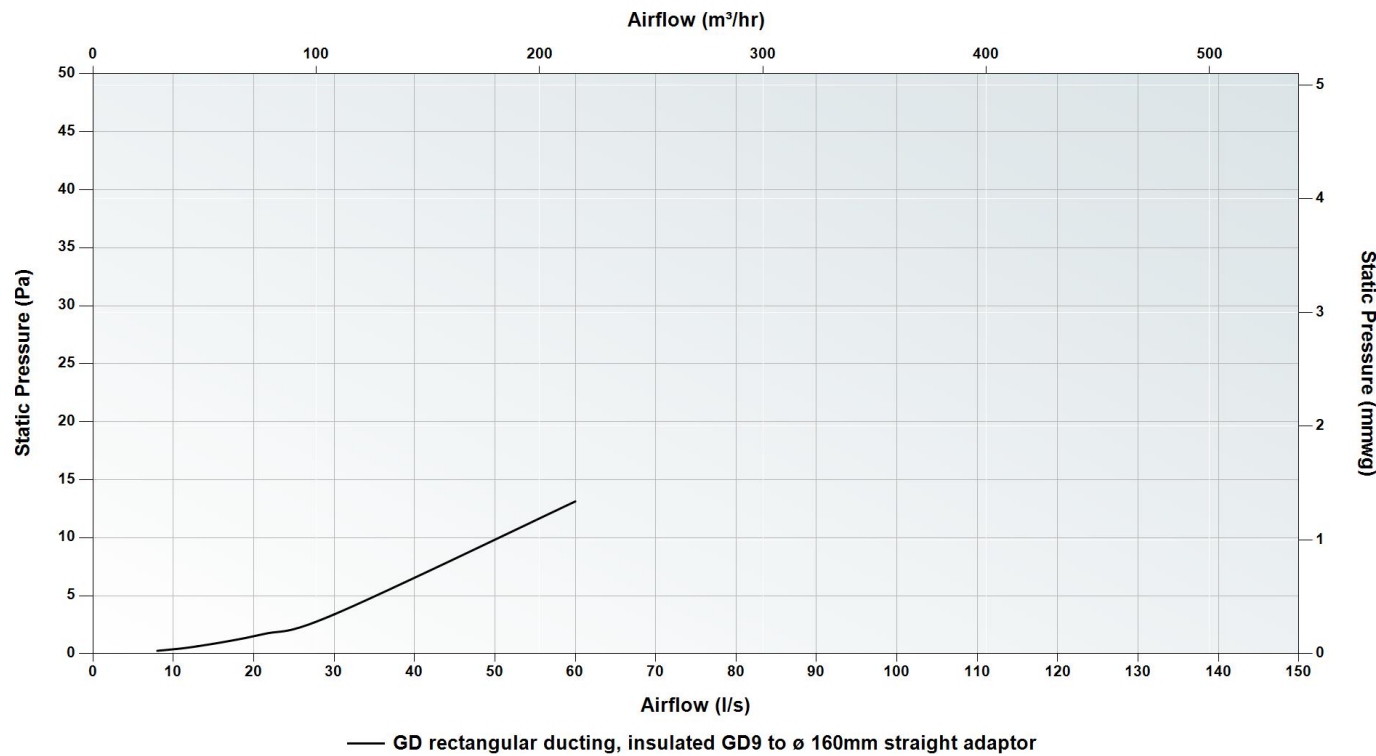
Height	200 mm
Width	260 mm
Depth	180 mm
Weight	0.5 kg



Dimensions



Pressure Curve



GD rectangular ducting, insulated GD9 90° horizontal bend

Article number: GD9051

Description

Insulated bend:

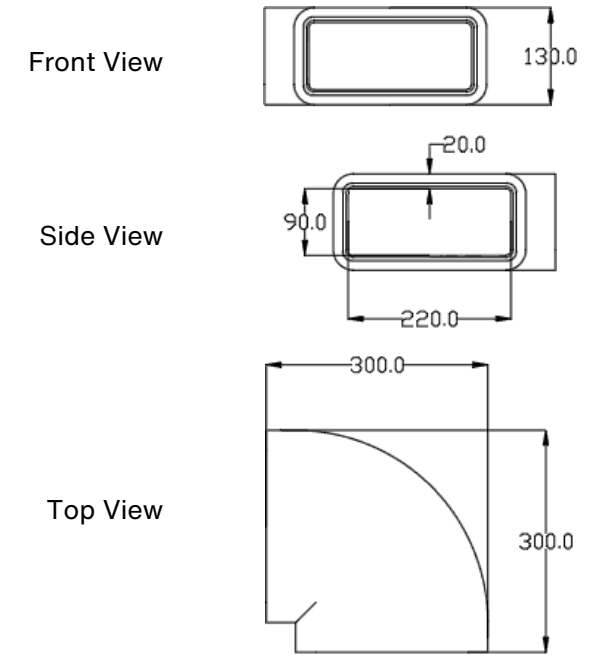
Horizontal insulated bend available in 45° and 90°. Each bend comes complete with two duct to fitting connectors (GD917SSCI) to securely connect to a straight length of insulated duct.

Technical Specification

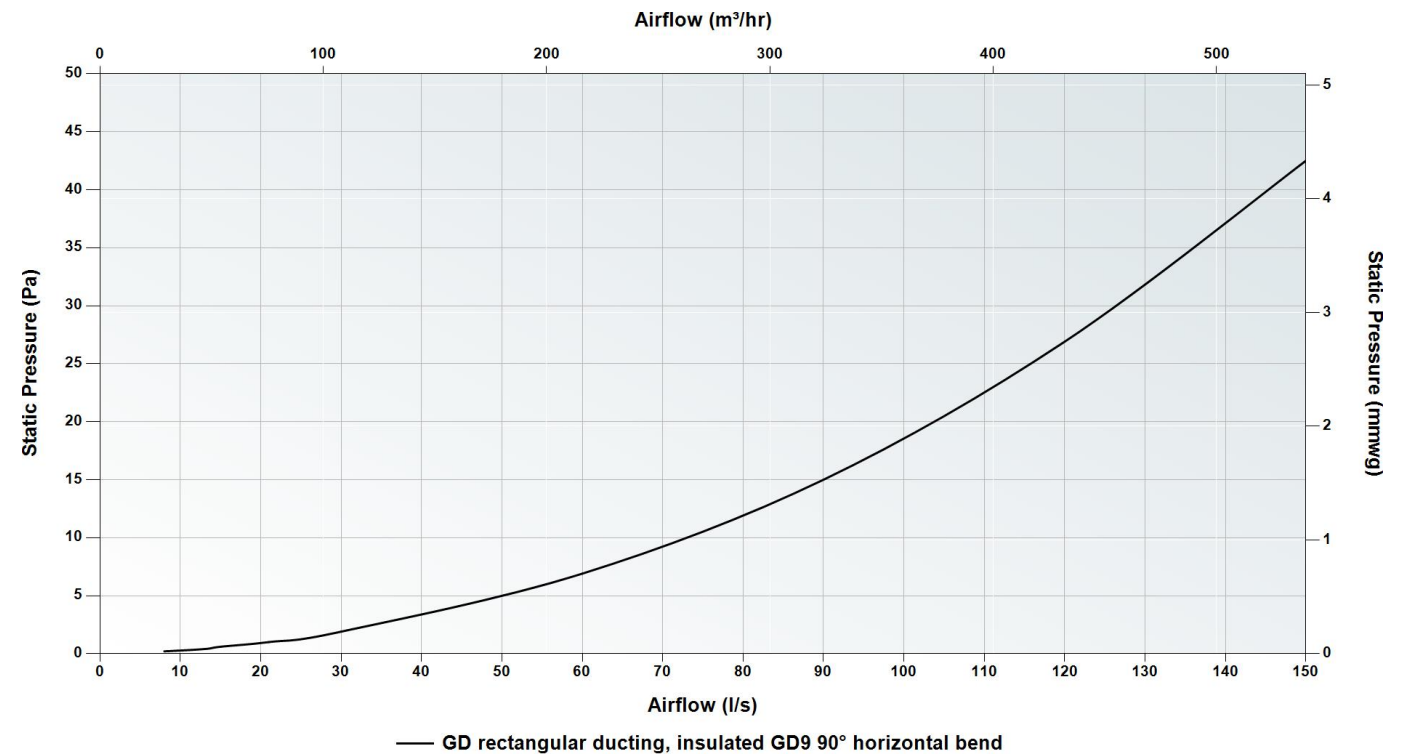
Angle	90°
Height	130 mm
Width	300 mm
Depth	300 mm
Weight	0.285 kg



Dimensions



Pressure Curve





GD rectangular ducting, insulated GD9 45° horizontal bend

Article number: GD916I

Description

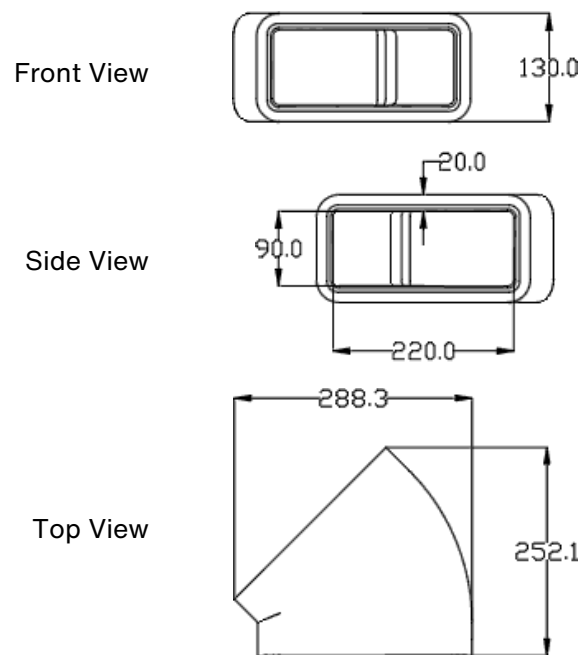
Insulated bend:
Horizontal insulated bend available in 45° and 90°. Each bend comes complete with two duct to fitting connectors (GD917SSCI) to securely connect to a straight length of insulated duct.

Technical Specification

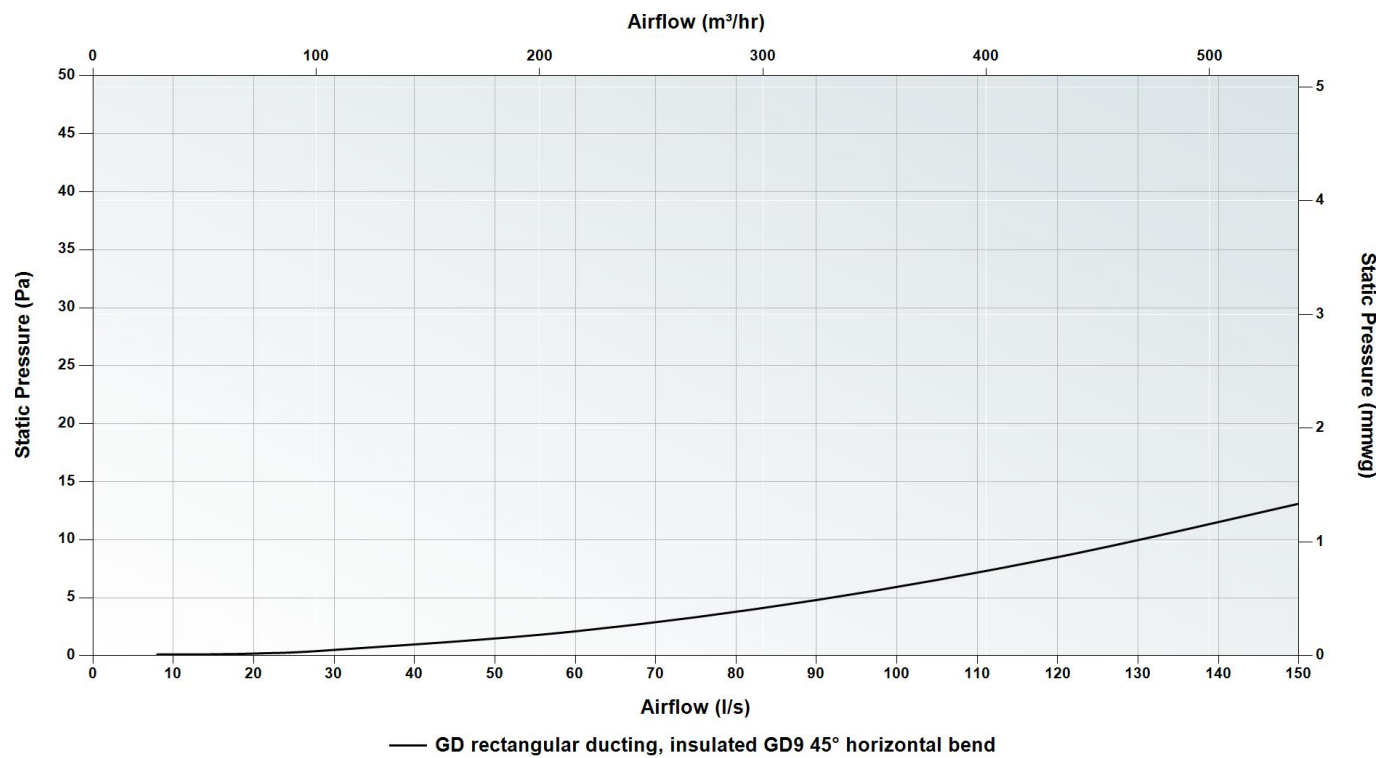
Angle	45°
Height	130 mm
Width	288.3 mm
Depth	252.1 mm
Weight	0.218 kg



Dimensions



Pressure Curve



GD rectangular ducting, insulated GD9 90° vertical bend

Article number: GD906I

Description

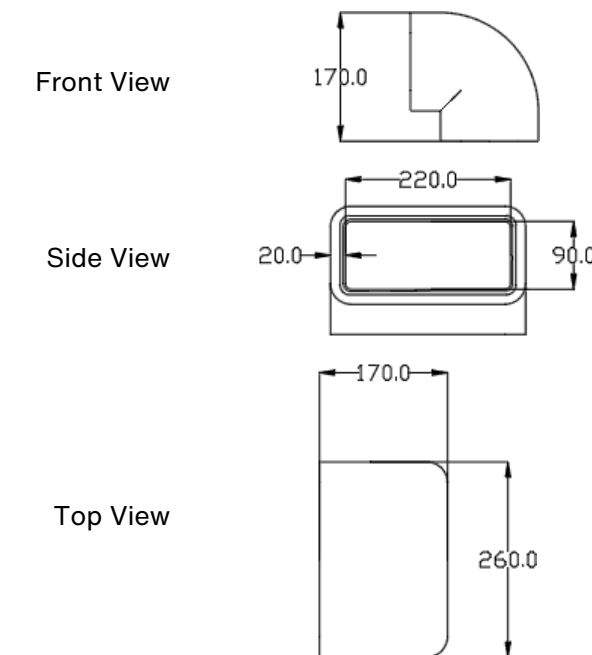
Insulated bend:
Vertical insulated bend available in 45° and 90°. Each bend comes complete with two duct to fitting connectors (GD917SSCI) to securely connect to a straight length of insulated duct.

Technical Specification

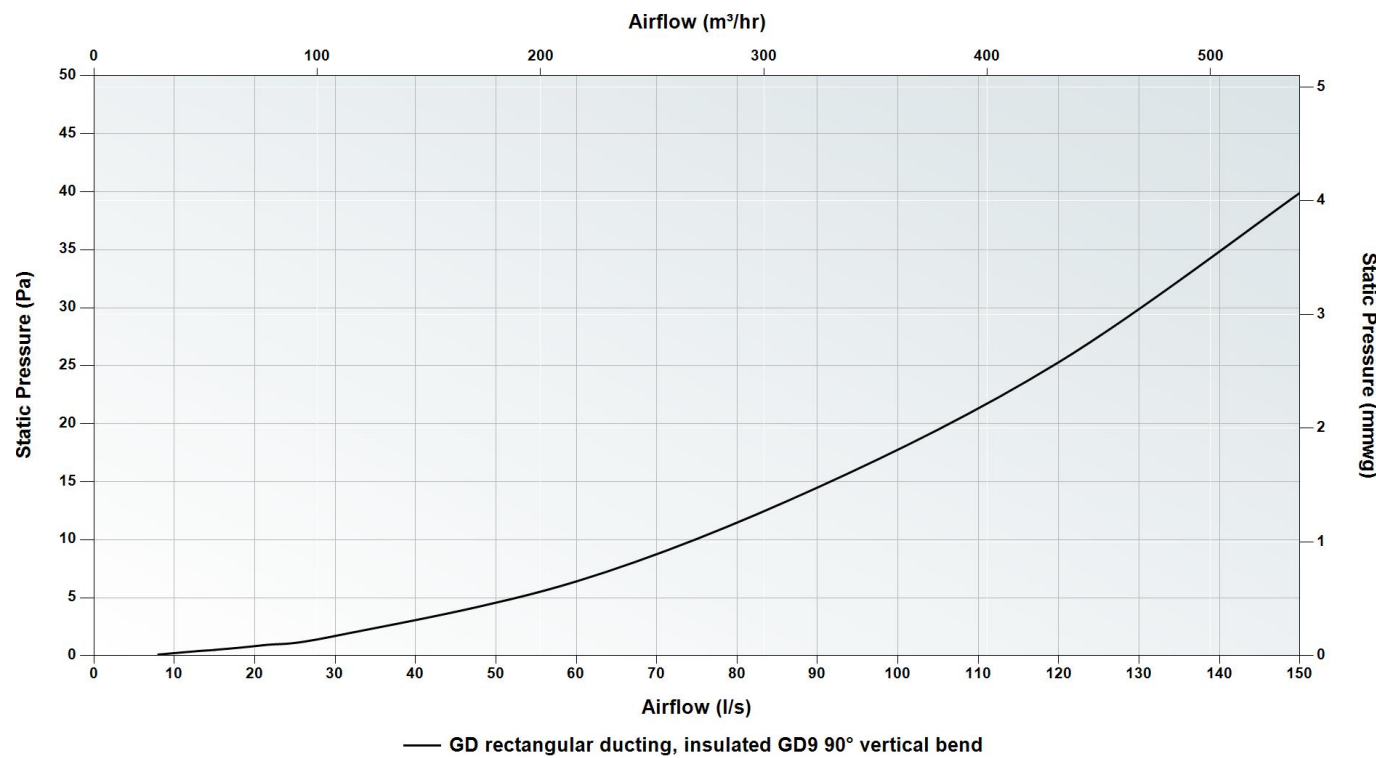
Angle	90°
Height	170 mm
Width	260 mm
Depth	170 mm
Weight	0.270 kg



Dimensions



Pressure Curve



GD rectangular ducting, insulated GD9 45° vertical bend

Article number: GD9171

Description

Insulated bend:

Vertical insulated bend available in 45° and 90°. Each bend comes complete with two duct to fitting connectors (GD917SSCI) to securely connect to a straight length of insulated duct.

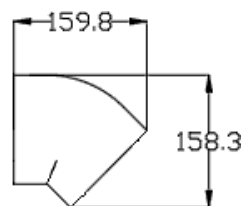
Technical Specification

Angle	45°
Height	259 mm
Width	260 mm
Depth	249 mm
Weight	0.210 kg

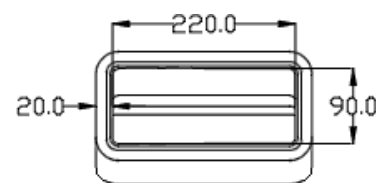


Dimensions

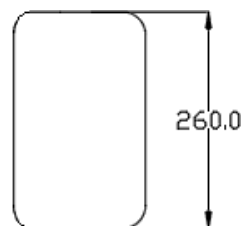
Front View



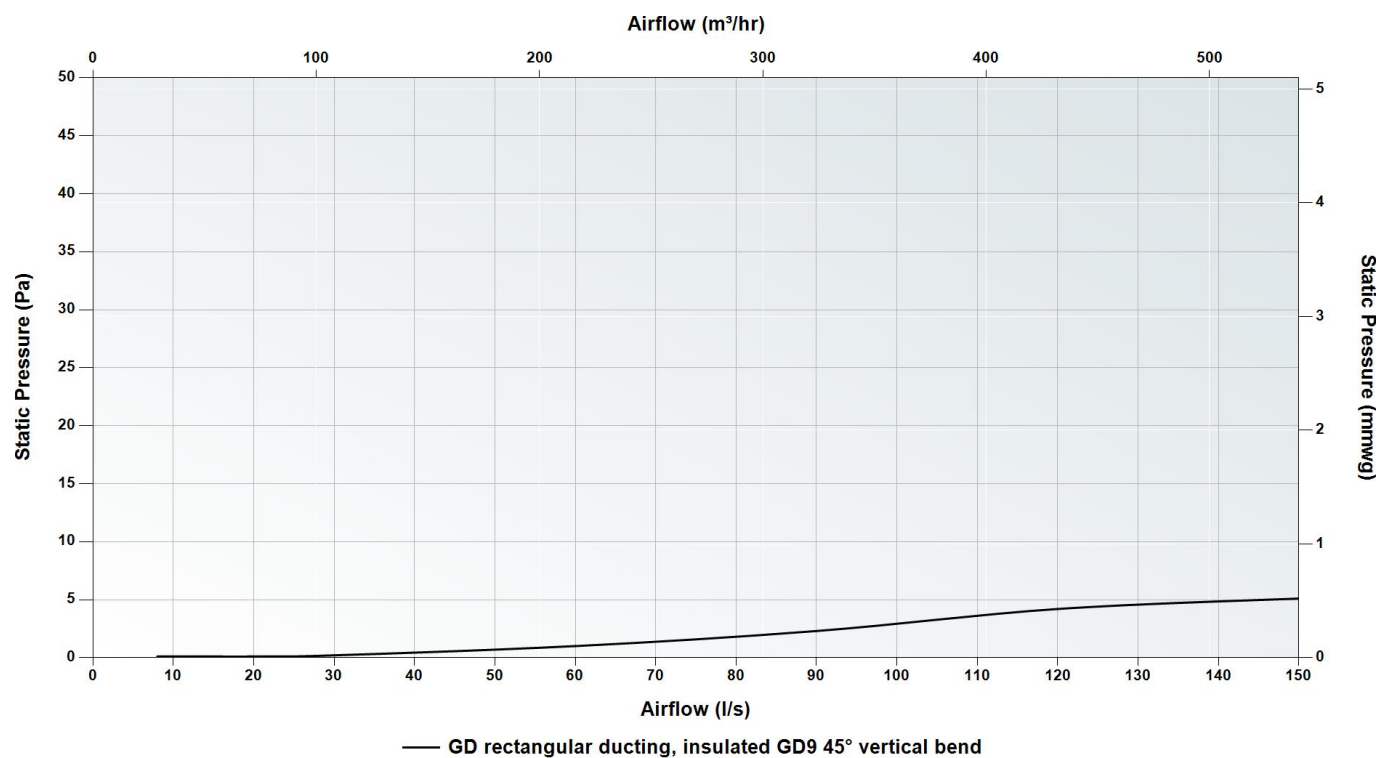
Side View



Top View



Pressure Curve



GD rectangular ducting, insulated GD9 horizontal T-piece

Article number: GD9101

Description

Insulated T-piece:

Insulated T-piece. Each T-piece comes complete with three duct to fitting connectors (GD917SSCI) to securely connect to a straight length of insulated duct.

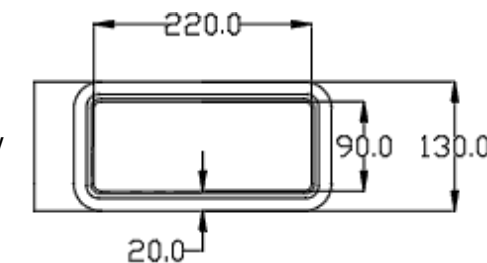
Technical Specification

Height	130 mm
Width	340 mm
Depth	300 mm
Weight	0.391 kg

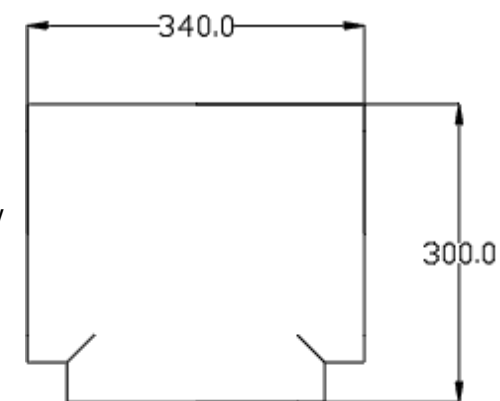


Dimensions

Side View



Top View



GD rectangular ducting, GD9 self-seal coupling, duct to fitting, for insulated system

Article number: GD917SSCI

Description

Coupling:

Couplings for insulated duct system. Duct to fitting connector (GD917SSCI) to securely connect one of the ancillaries to a length of duct.

Technical Specification

Height	103 mm
Width	234 mm
Depth	65.3 mm



GD rectangular ducting, GD9 self-seal coupling, duct to duct, for insulated system

Article number: GD918SSCI

Description

Coupling:

Couplings for insulated duct system. Duct to duct connector (GD918SSCI) to connect two lengths of duct.

Technical Specification

Height	92.2 mm
Width	222.2 mm
Depth	60 mm



Consultant Specification

Specification

The pre-insulated ductwork shall be constructed of graphite impregnated expanded polystyrene (EPS) with a density of 25 kg/m³ and thermal resistance of ≥ 0.666 m²K/W. It shall be fully tested to meet the thermal conductivity requirements of [BASF-EN13163](#) and be flame retardant to [DIN 4102-B1](#).

It shall have an operating temperature range of -15 to +60°C and not be designed to exceed flowrates with a velocity in excess of 3 m/s. The ductwork shall exceed [DW/143](#) Class A leakage test and meet the [DW/154](#) ductwork standard.

BIM/CAD Components

If you would like to download the BIM / CAD files for this or any other of our products then please visit our BIM library.

[TO VISIT OUR BIM/CAD LIBRARY](#)

[CLICK HERE](#)

Installation Instructions

If you would like to download the installation files for this or any other of our products then please visit our download page by clicking the link below.

[TO VISIT OUR DOWNLOAD PAGE](#)

[CLICK HERE](#)