

Zehnder GD8 ø 125 mm

Round Pre-Insulated Ductwork

Product data sheet

always the best climate



GD8 ø 125 mm

The Zehnder ø 125 mm self-seal insulated ducting is perfect for meeting Building Regulations for insulation whilst minimising air leakage. The lightweight and robust ductwork along with the self-seal connection mean this can be installed much faster than conventional rockwool insulation.

The PUSH - CLICK - LOCK connection eliminate the need for tape, sealant and screws and also exceeds the requirements set out in [DW/143](#) Class A Leakage Test and [DW/154](#) ductwork standards and has also been independently tested by the BRE.

The ductwork is compatible with our standard ø 125 mm PVC ductwork.



Key Features

- Easy and quick to install
- Airtight
- Compliant with Building Regulations
- Independently tested by the BRE
- Simple PUSH - CLICK - LOCK connection
- Lightweight and easy to handle
- No sealant or tape required
- Wide range of size options
- Suitable for use with standard PVC ductwork
- Flame retardant to [DIN 4102 B1](#)

Article Numbers

| Description | Product Code |
|---|---------------------------|
| GD round ducting, insulated GD8 duct, ø 125 mm x 1 m | GD813.1I |
| GD round ducting, insulated GD8 duct, ø 125 mm x 2 m | GD813.2I |
| GD round ducting, insulated GD8 90° bend | GD824I |
| GD round ducting, insulated GD8 45° bend | GD826I |
| GD round ducting, insulated GD8 T-piece | GD830I |
| GD round ducting, GD8 self-seal coupling, duct to fitting, for insulated system | GD832SSCI |
| GD round ducting, GD8 self-seal coupling, duct to duct, for insulated system | GD833SSCI |

Technical Specification

| | |
|--|---|
| Material | Graphite impregnated expanded polystyrene (EPS) |
| Operating temperature range | -15 to +60°C |
| Minimum density | 25 kg/m ³ |
| Free area | 12,273 mm ² |
| Thermal conductivity | 0.03 W/mK |
| Thickness | 22.25 mm |
| Thermal Resistance | 0.742 m ² K/W |
| Fire Rating in accordance with DIN 4102-1 | B1 |
| Meets BASF-EN13163 | Yes |
| Exceed DW/143 Class A leakage test | Yes |
| Meets DW/154 ductwork standard | Yes |

GD round ducting, insulated GD8 duct, ø 125 mm

Article number: GD813.1I / GD813.2I

Description

Insulated duct:

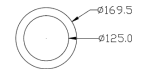
Insulated duct available in 1 m or 2 m lengths. Each length comes complete with a single duct to duct connector ([GD833SSCI](#)) to fit into the next straight length of duct. Suitable for use with GD813 ø 125 mm PVC ductwork.

Technical Specification

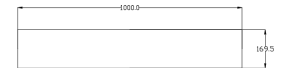
| | |
|------------------|---------------------|
| Outside diameter | 169.5 mm |
| Inside diameter | 125 mm |
| Length | 1000 mm / 2000 mm |
| Weight | 0.341 kg / 0.682 kg |

Dimensions

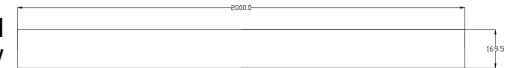
GD813.1I
GD813.2I
Side View



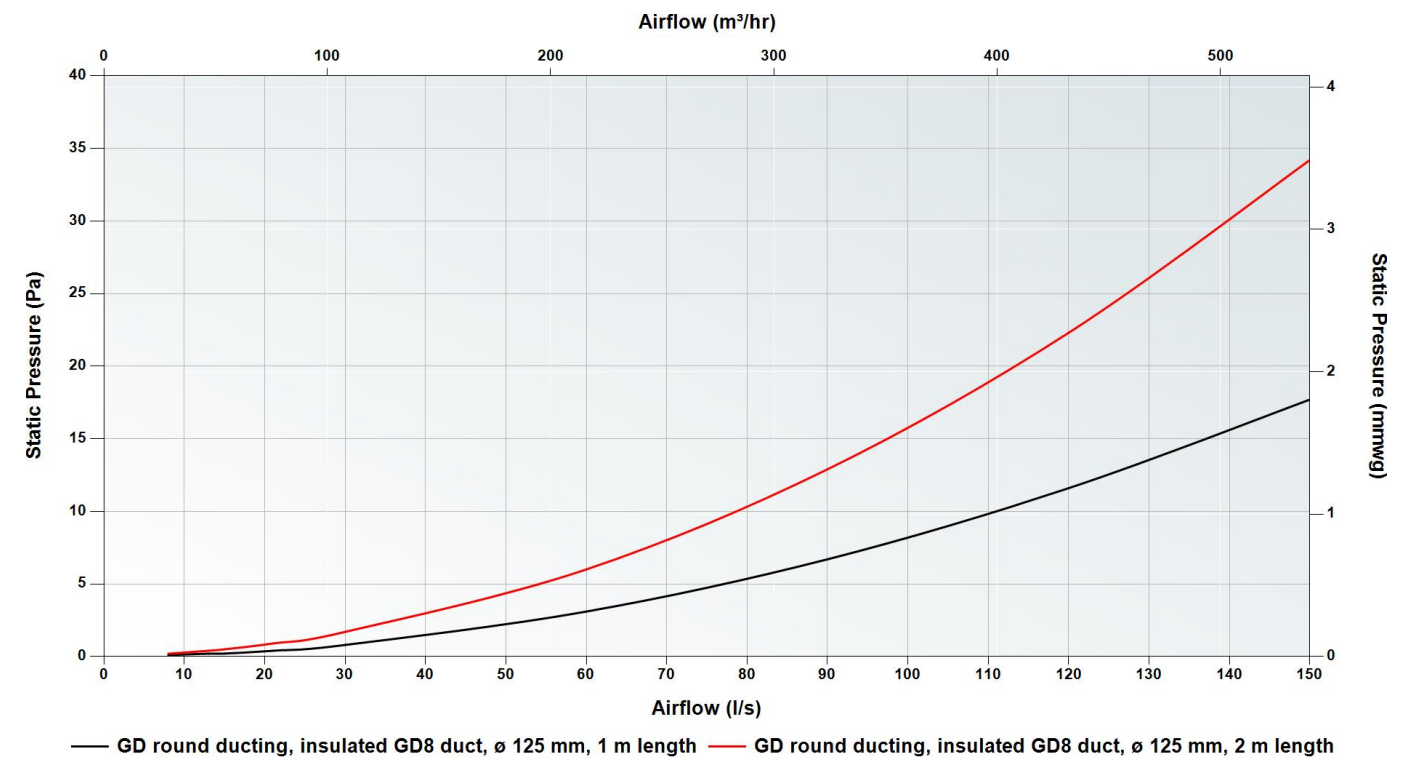
GD813.1I
Top View



GD813.2I
Top View



Pressure Curve



GD round ducting, insulated GD8 90° bend

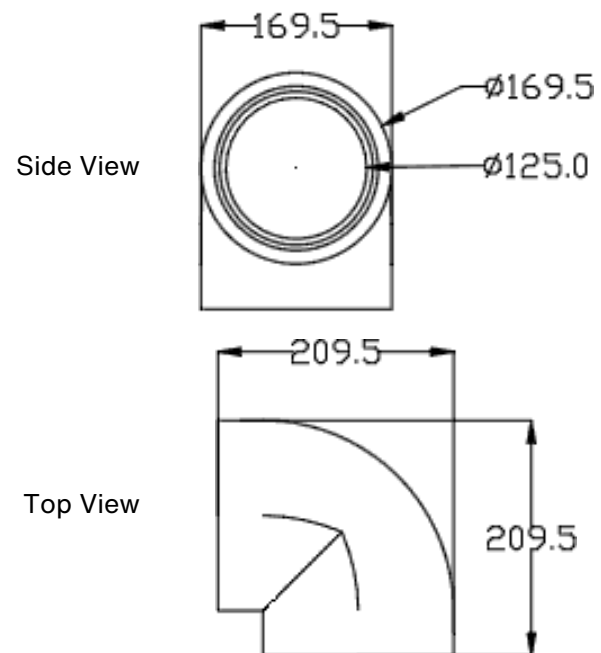
Article number: GD824I

Description**Insulated bend:**

Insulated bend available in 45° and 90°. Each bend comes complete with two duct to fitting connectors ([GD832SSCI](#)) to securely connect to a straight length of insulated duct.

Technical Specification

| | |
|--------|----------|
| Angle | 90° |
| Height | 209.5 mm |
| Width | 209.5 mm |
| Depth | 169.5 mm |
| Weight | 0.193 kg |

**Dimensions****GD round ducting, insulated GD8 45° bend**

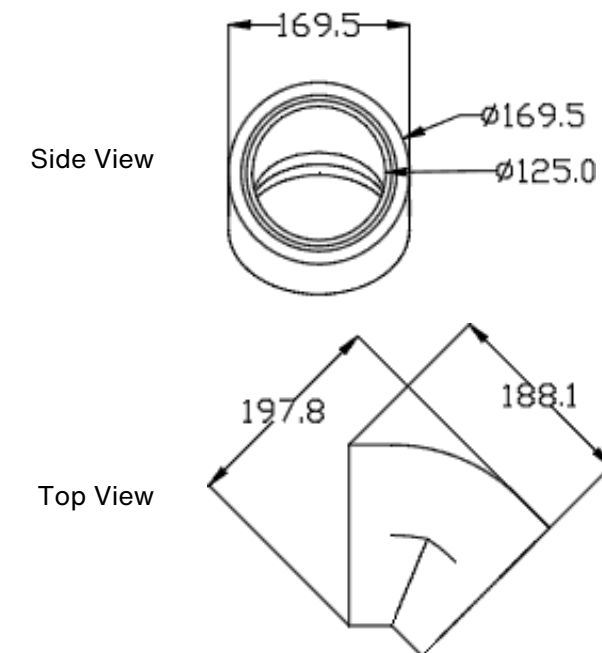
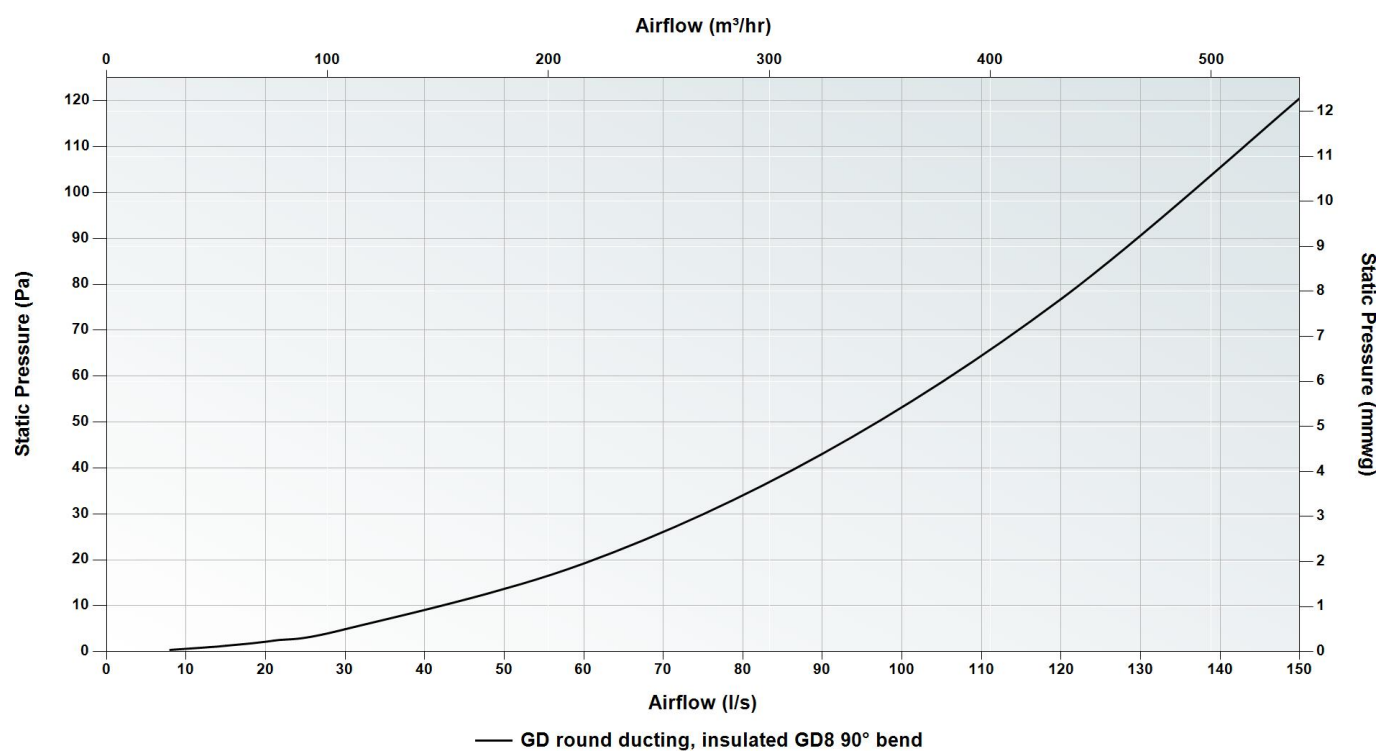
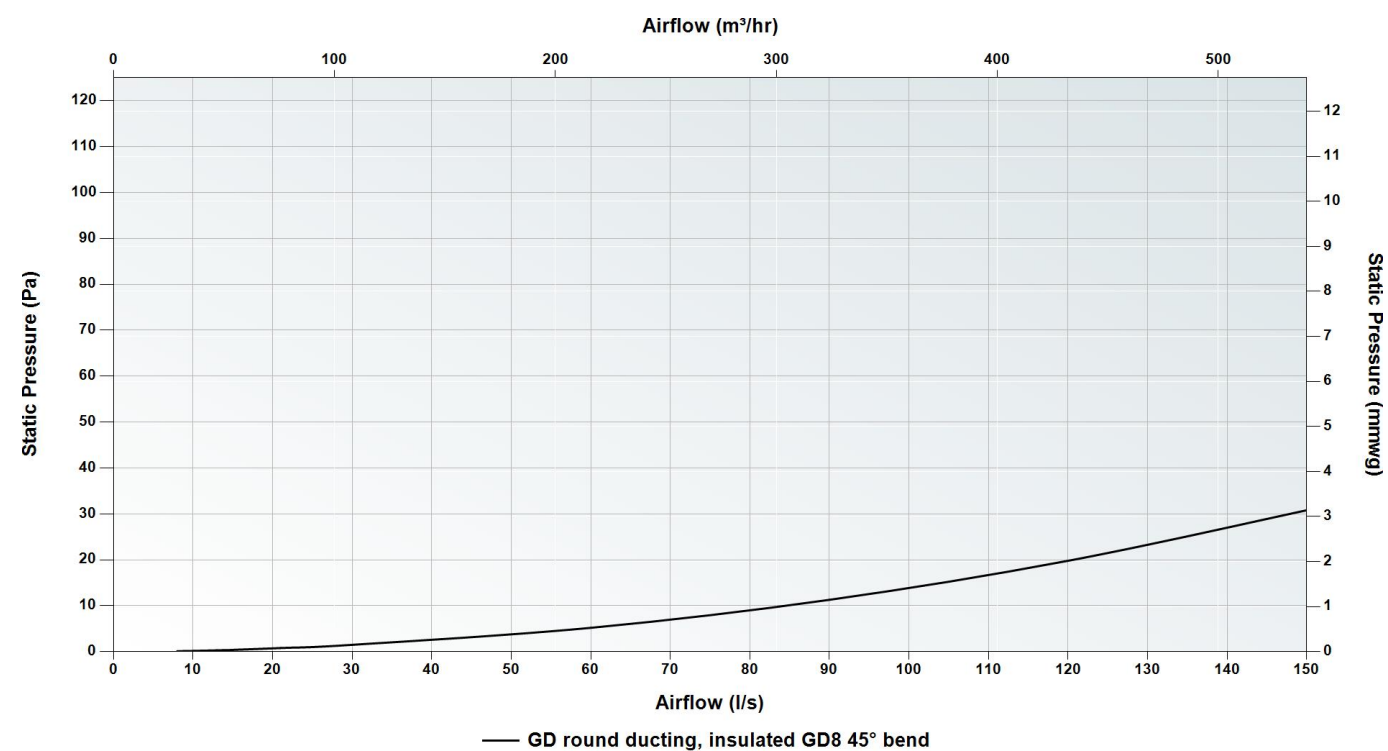
Article number: GD826I

Description**Insulated bend:**

Insulated bend available in 45° and 90°. Each bend comes complete with two duct to fitting connectors ([GD832SSCI](#)) to securely connect to a straight length of insulated duct.

Technical Specification

| | |
|--------|----------|
| Angle | 45° |
| Height | 188.1 mm |
| Width | 197.8 mm |
| Depth | 169.5 mm |
| Weight | 0.167 kg |

**Dimensions****Pressure Curve****Pressure Curve**

GD round ducting, insulated GD8 T-piece, ø 125 mm

Article number: GD830I

Description

Insulated T-piece:

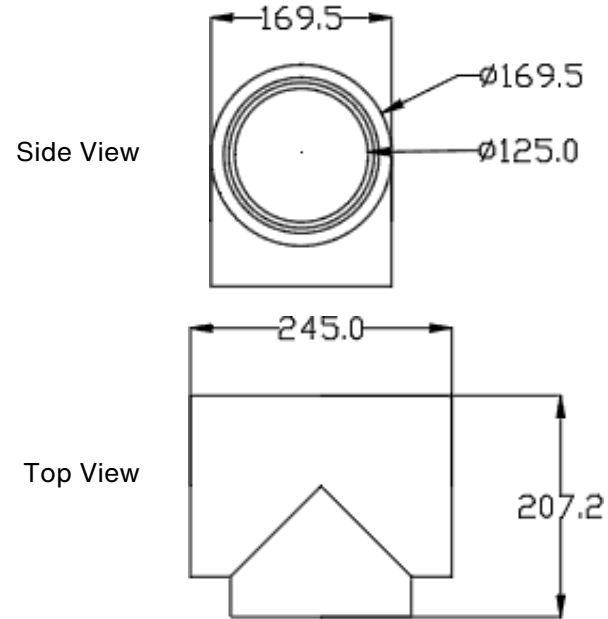
Insulated T-piece. Each T-piece comes complete with three duct to fitting connectors ([GD832SSCI](#)) to securely connect to a straight length of insulated duct.

Technical Specification

| | |
|--------|----------|
| Height | 207.2 mm |
| Width | 245 mm |
| Depth | 169.5 mm |
| Weight | 0.270 kg |



Dimensions



GD round ducting, GD8 self-seal coupling, duct to fitting, for insulated system

Article number: GD832SSCI

Description

Coupling:

Couplings for insulated duct system. Duct to fitting connector ([GD832SSCI](#)) to securely connect one of the ancillaries to a length of duct.

Technical Specification

| | |
|----------|----------|
| Length | 65.3 mm |
| Diameter | 142.2 mm |



GD round ducting, GD8 self-seal coupling, duct to duct, for insulated system

Article number: GD833SSCI

Description

Coupling:

Couplings for insulated duct system. Duct to duct connector ([GD833SSCI](#)) to connect two lengths of duct.

Technical Specification

| | |
|----------|----------|
| Length | 60 mm |
| Diameter | 127.2 mm |



BIM/CAD Components

If you would like to download the BIM / CAD files for this or any other of our products then please visit our BIM library.

[TO VISIT OUR BIM/CAD LIBRARY](#)

[CLICK HERE](#)

Installation Instructions

If you would like to download the installation files for this or any other of our products then please visit our download page by clicking the link below.

[TO VISIT OUR DOWNLOAD PAGE](#)

[CLICK HERE](#)

Consultant Specification

Specification

The pre-insulated ductwork shall be constructed of graphite impregnated expanded polystyrene (EPS) with a density of 25 kg/m³ and thermal resistance of 0.742 m²K/W. It shall be fully tested to meet the thermal conductivity requirements of [BASF-EN13163](#) and be flame retardant to [DIN 4102-B1](#).

It shall have an operating temperature range of -15 to +60°C and not be designed to exceed flowrates with a velocity in excess of 3 m/s. The ductwork shall exceed [DW/143](#) Class A leakage test and meet the [DW/154](#) ductwork standard.