

Halo Range Shower Fan & Light Kit

High performance ceiling fan for showers

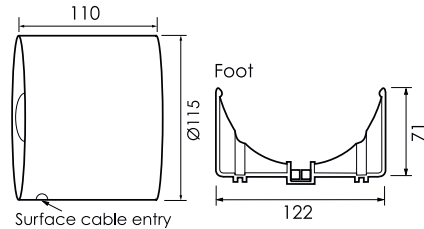


Features and benefits

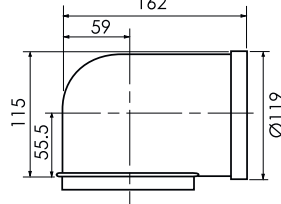
- Complete shower fan kit including with inline fan, ducting and light included
- Basic and timer options
- 90° bend included for installing between joists in ceiling voids
- Both light fitting and fan are IPX4 rated
- 12V (SELV) lamp
- Chrome grille option available (HCBC)



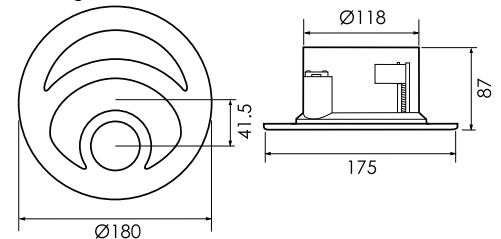
Shower Fan



90° Bend



Elite Light Unit



Models, control options and key data

*Sound pressure level measured @ 3 metres

| Product code | Control operation | Voltage | IP | Performance in free air | | Sound pressure dB(A)* | Price ex. VAT (£) |
|--------------|---|---------|----|-------------------------|-----|-----------------------|-------------------|
| | | | | m ³ /h | l/s | | |
| HC115BBK | Kit comprising basic induct fan, internal grille with 12V light unit, LV light transformer, 90° bend, 3 metres of Flexiduct, 4 fixing clips, outlet grille and fixing screws. Single speed | 230 | X4 | 200 | 56 | 31 | £80.45 |
| HC115TBK | Kit comprising induct fan with adjustable timer, internal grille with 12V light unit LV light transformer, 90° bend, 3 metres of Flexiduct, 4 fixing clips, outlet grille and fixing screws. Single speed | 230 | X4 | 200 | 56 | 31 | £91.28 |
| H115SL | Options to replace 12V light unit, LV light transformer and 90° bend | 230 | X4 | - | - | - | £41.15 |
| HCBC | Chrome internal grille | - | - | - | - | - | £10.26 |

Physical specification

All measurements in millimetres unless otherwise indicated

- Weight:** 0.92kg
- Materials:** ABS white plastic
- Ceiling Fixing Hole:** 145mm diameter

Installation

- Shower Fan:** 230V~50Hz class II
- Consumption:** 20W
- 12V Light:** 12V~50Hz class II
- Lamp:** 12V diachronic lamp rated at 20W, 36° beam angle. GE Lighting Type: M269
- Consumption:** 20W (SELV)
- Cabling:** Ø 1.5mm² max

Performance

