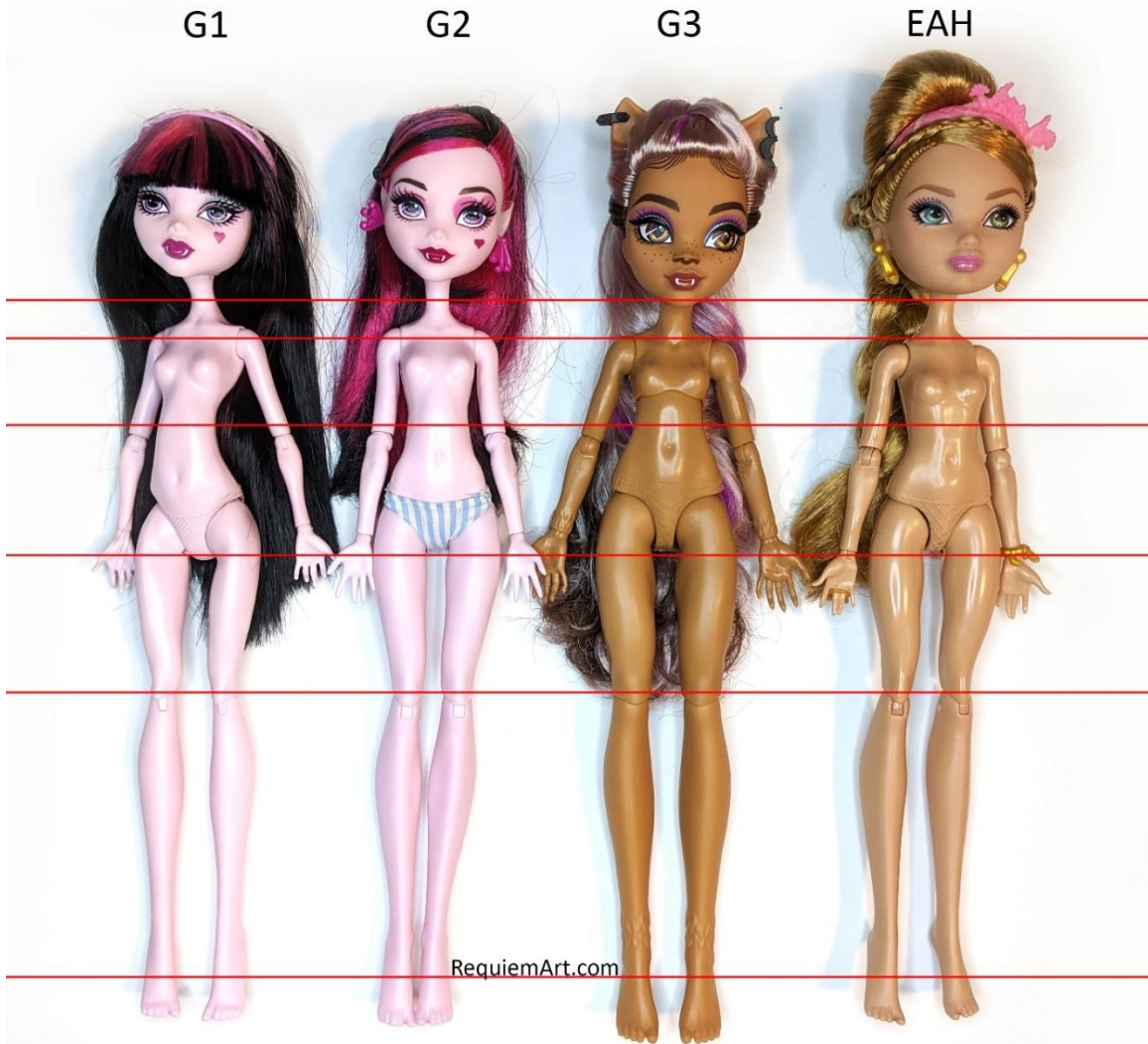


Monster High Generations



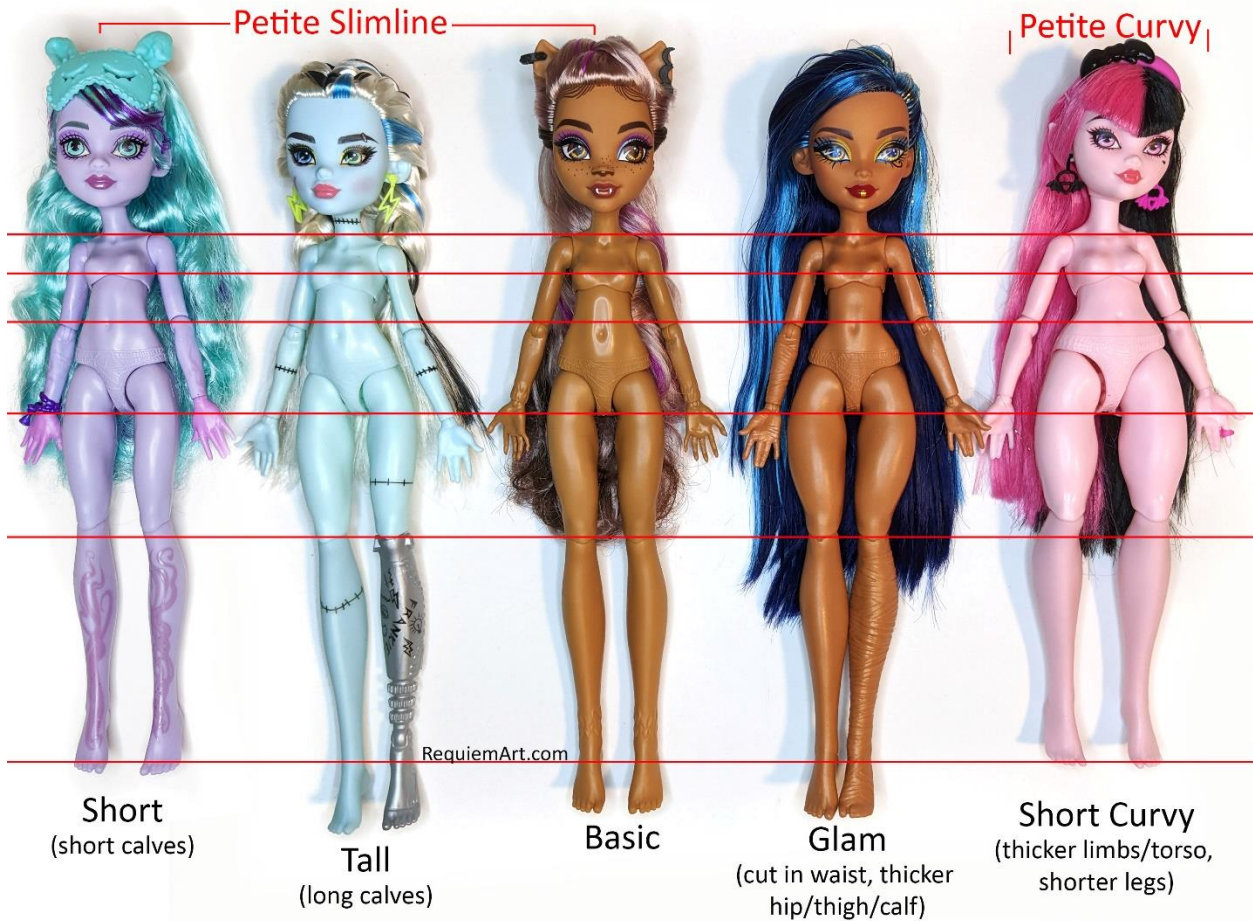
Monster High has had 3 reboots and a spinoff so let's try and make things easier to figure out!

In G1 Monster High, there were 3 sizes of girl doll: Adult, Basic, and Little Sister. They had the same proportions, so you could use the same patterns. For Adult size, print patterns at 115%. For Little Sisters, print at 90%.

Ever After High had Short & Tall dolls in addition to the basic line, BUT they were all the same from the knees up. Short dolls had short calves, tall dolls had longer calves. G3 Monster High has followed this formula with their Tall/Short dolls also. In these lines, no % adjustment is necessary.

Measurement	G1	G2	G3	EAH
Height*	19	19	20	18
Shoulder Width	4	4	4	4
Torso Length	8.25	7.5	7	7.25
Bust	7	7.5	7.8	7.5
Waist	5.5	5.5	6.5	6
Hip/Top of Panty	8	8.5	8.5	8.5
Hip/Widest Point	9.5	10	10.8	10
Arm Length	6.5	6.5	6	6.5
Arm Girth	2.25	2.5	2.5	2.5
Leg Length	11	11	13.5	11
Leg Girth	5	5.5	6	5.5

Monster High G3 (2022) Dolls



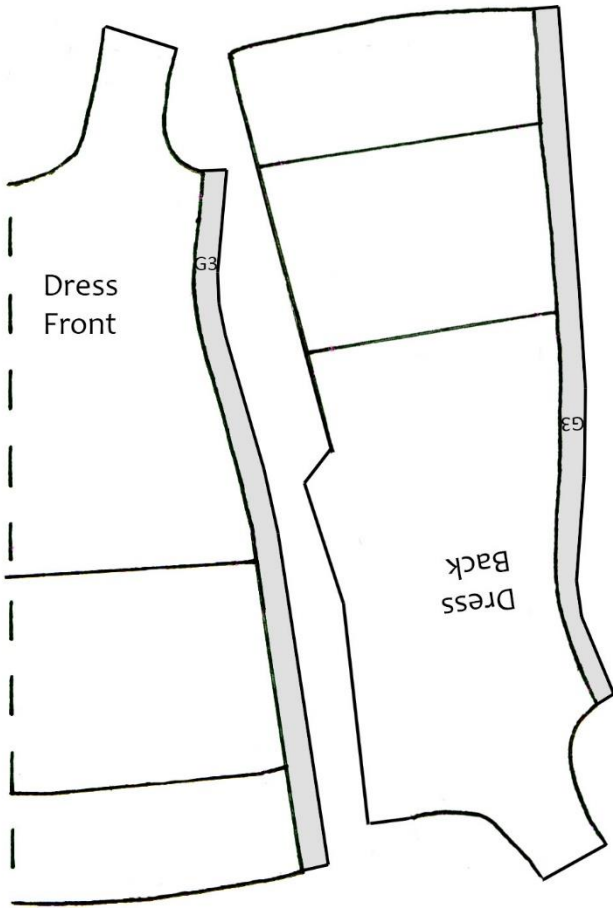
Measurement	Petite Slimline			None	Petite Curvy
	<i>Short</i>	<i>Tall</i>	<i>Basic</i>	<i>Glam</i>	<i>Short Curvy</i>
Height*	19.5	20.5	20	20	19.5
Shoulder Width	4	4	4	4	4
Torso Length	7	7	7	7	7
Bust	7.8	7.8	7.8	7.8	9
Waist	6.5	6.5	6.5	6	7
Hip/Top of Panty	8.5	8.5	8.5	8.5	11
Hip/Widest Point	10.8	8.5	10.8	11	12
Arm Length	6	6.25	6	6	6
Arm Girth	2.5	2.5	2.5	2.5	3
Leg Length	12.5	14	13.5	13.5	11.5
Leg Girth	6	6	6	6.8	7

*Height is measured as distance from top of shoulder to heel

G3 Short/Tall/Curvy will be able to wear loose fitting patterns in Petite Slimline size with no adjustment. Fitted non-stretch patterns (ex pants, body con dresses, pencil skirts) will need an extra 1/8" or 3cm added to side seams on the torso/legs (See example on Page 3).

G3 Glam body can wear TOPS, gathered skirts, and dresses with gathered skirts but nothing fitted in the hip or leg (ex pants, body con dresses, pencil skirts).

Short Curvy can wear patterns in the Petite Curvy size.



How Do You Adjust a Pre-G3 Pattern?

This is super easy! You only need to adjust SIDE SEAMS for non-stretch fitted patterns from the bust down.

No sleeves, no loose skirts, no necklines, no collars, none of that.

Just pull out a ruler and add .3cm or 1/8" to the side seams

← Like this.

Or, if you're feeling lazy, print your patterns at 104%. This is slightly less precise, and it will also make some other things you don't need to make looser (like sleeves) looser... but only by a tiny bit, not enough to throw off the fit.

If you come across a pattern that this does not work for, send me a message on Etsy or at

RequiemArtDesigns@gmail.com

I'll update the pattern with fixes myself 😊