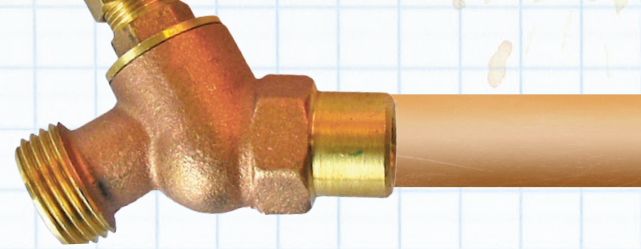


Start With ...



Attach "Y" connector to
Hose Bib

Y Connector with Shut-Off

So you can the hose without removing your drip irrigation system.

- IRH950 Gilmour Metal (PICTURED)
- IRH951 Gilmour Metal Full Flow

Vacuum Breaker

Prevent contamination of your water source.

- IRF1000 Anti-Siphon FHT x MHT (PICTURED)

Flushable "Y" Filter

Remove sediment and easily flush your system.

- IRF176 ¾" FHT x MHT (PICTURED)

optional:

Calcium Filter

Help for systems on a hard water source.

- IRF900 Connects AFTER Flushable "Y" Filter (PICTURED)

Power-Loc™ Starter Fitting

Spigot connection for poly tubing irrigation systems up to 60 PSI

- IRC730 Female
- IRC705 Elbow
- IRC700 Tee (PICTURED)
- IRC745 Male

Timer

Set it and forget it!

- WOT526 Gilmour Mechanical
- WOT1510 Galcon 11000EZ Pre Programed (PICTURED)
- WOT1506 Galcon 9001 Bluetooth Programmable
- WOT401 Melnor Mechanical
- WOT407 Melnor Digital
- WOT406 Melnor Digital 2 Zone
- WOT402 Melnor Digital 4 Zone

optional:

Water Meter

Know how much water you're using.

- WOT700 Connects between the filter and timer (PICTURED)

Fixed Pressure Regulator

Reduce pressure for medium flow systems. ¾" FHT x MHT

- IRH819 10 PSI (PICTURED)
- IRH824 25 PSI
- IRH830 50 PSI

Poly Tubing

Power-Loc™ Starter Fittings

Spigot connection for poly tubing irrigation systems up to 60 PSI.

$\frac{3}{4}$ " Female Starter
IRC730

$\frac{1}{2}$ " Starter Tee
IRC700



$\frac{1}{2}$ " Starter Elbow
IRC705



$\frac{3}{4}$ " Male Starter
IRC745

Power-Loc™ Fittings

For poly tubing irrigation systems up to 60 PSI.

$\frac{1}{2}$ " Tee
IRC710

$\frac{1}{2}$ " POLY

$\frac{1}{2}$ " Elbow
IRC720

In-Line Valves

Insert into $\frac{1}{2}$ " poly tubing to
open or shut off individual lines

$\frac{1}{2}$ " Coupler
IRC715
Great for
repairing
cracked or
cut lines, or
extending
lines.



$\frac{1}{2}$ " Power-Loc™ In-Line Valve
IRC735

$\frac{1}{2}$ " In-Line Valve
IRH430

Power-Loc™ Fittings

For poly tubing irrigation systems up to 60 PSI.

½" 4 Way Connector
IRC750

½" Poly Tubing Mounting Clip

Securely hold poly tubing against a wood wall or other vertical surfaces.

• IRP520 pack of 5



End Caps

For poly tubing irrigation systems up to 60 PSI.

½" Power-Loc™ with Screw Cap
IRC725

½" Figure 8 Closure
IRC545



½" Power-Loc™ with Flush Valve
IRC740



Hole Punches

Punch a hole in ½" poly to insert drip tape fittings, barbed couplers to connect ¼" emitter line, ¼" poly, risers for mini sprinkles, or barbed sprayers and bubblers.

Pocket Punch Tool
IRH640

Green Mini Punch
IRH639

Green Punch N' Cut
IRH650

Hole Punch
IRC456

Drip Tape

Can only be used in **STRAIGHT** lines

½" POLY

↑
**INSERT into
Punched Hole**
↑

← **OR** →

Loc Sleeve
¼" Barbed Fitting
IRC450

Loc Sleeve ½" Barbed Fitting
IRC470

←
**Space each run 8" apart to
stagger emitters for complete
coverage for most soil types**
←

↖
Perma-Loc-Sleeve
¼" Barbed Fitting
w/ Shutoff
IRC454
*Allows you to shut off
individual drip tape lines.*

Drip Tape

Drip Tape

Drip Tape

Tape-Loc™ Tee
IRC420

Tape-Loc™ Coupler
IRC410

Great for repairing damages Drip Tape.

↗
**Space each run 8" apart to
stagger emitters for complete
coverage for most soil types**
↘

10 PSI Pressure Regulator
IRH819

*10 PSI is strongly recommended
or Drip Tape may burst.*

Tape-Loc™ Elbow
IRC415

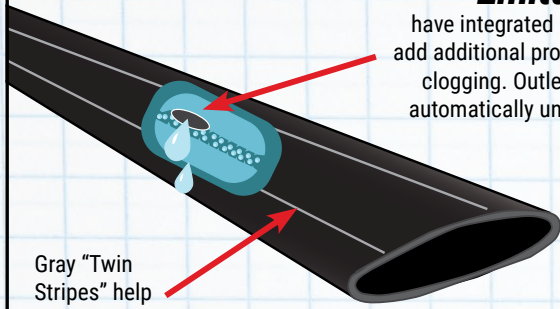
Tape-Loc™ Hose Starter
IRC425

Drip Tape



Emitters

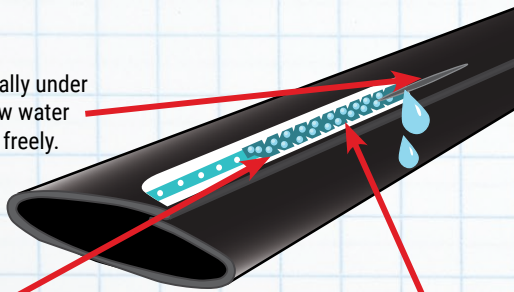
have integrated inlet filters to add additional protection against clogging. Outlet flap opens automatically under pressure.



Gray "Twin Stripes" help guide while placing.

Slits

open automatically under pressure to allow water to flow and drip freely.



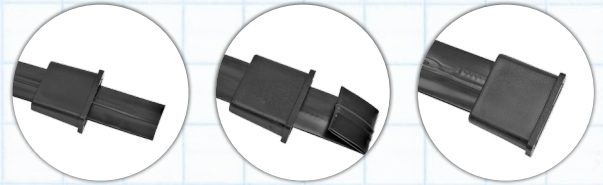
The chevron pattern in the water way creates a turbulent flow.

Tiny inlets act as filters to keep the system free of debris.

Ending Drip Tape

2 simple ways to close off your lines

Drip Tape Sleeve End
IRC441



Fold Drip Tape and push Sleeve End over folds

OR



Drip Tape

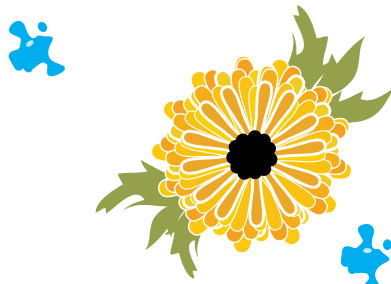
Tape-Loc™ End with Cap
IRC440

Emitter Line

Emitterline can be used like Drip Tape. The difference is Emitterline can curve (especially true for 1/4" emitterline) and has pressure compensating emitters installed internally to allow use on slopes.

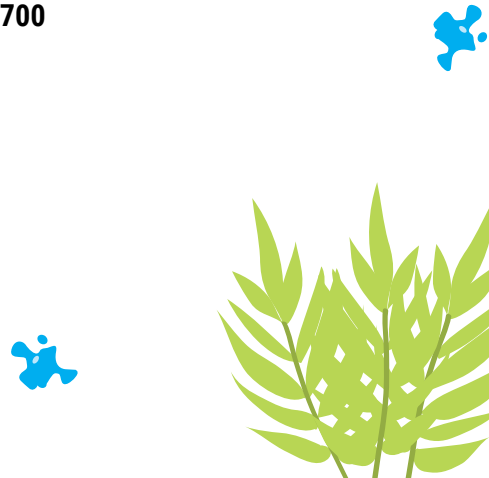
USE POLY TUBING FITTINGS FOR 1/2" EMITTERLINE

Can create a sharper Curve

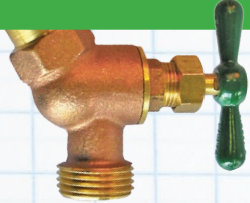


1/4" Emitterline
IRP715

1/2" Emitterline
IRP700

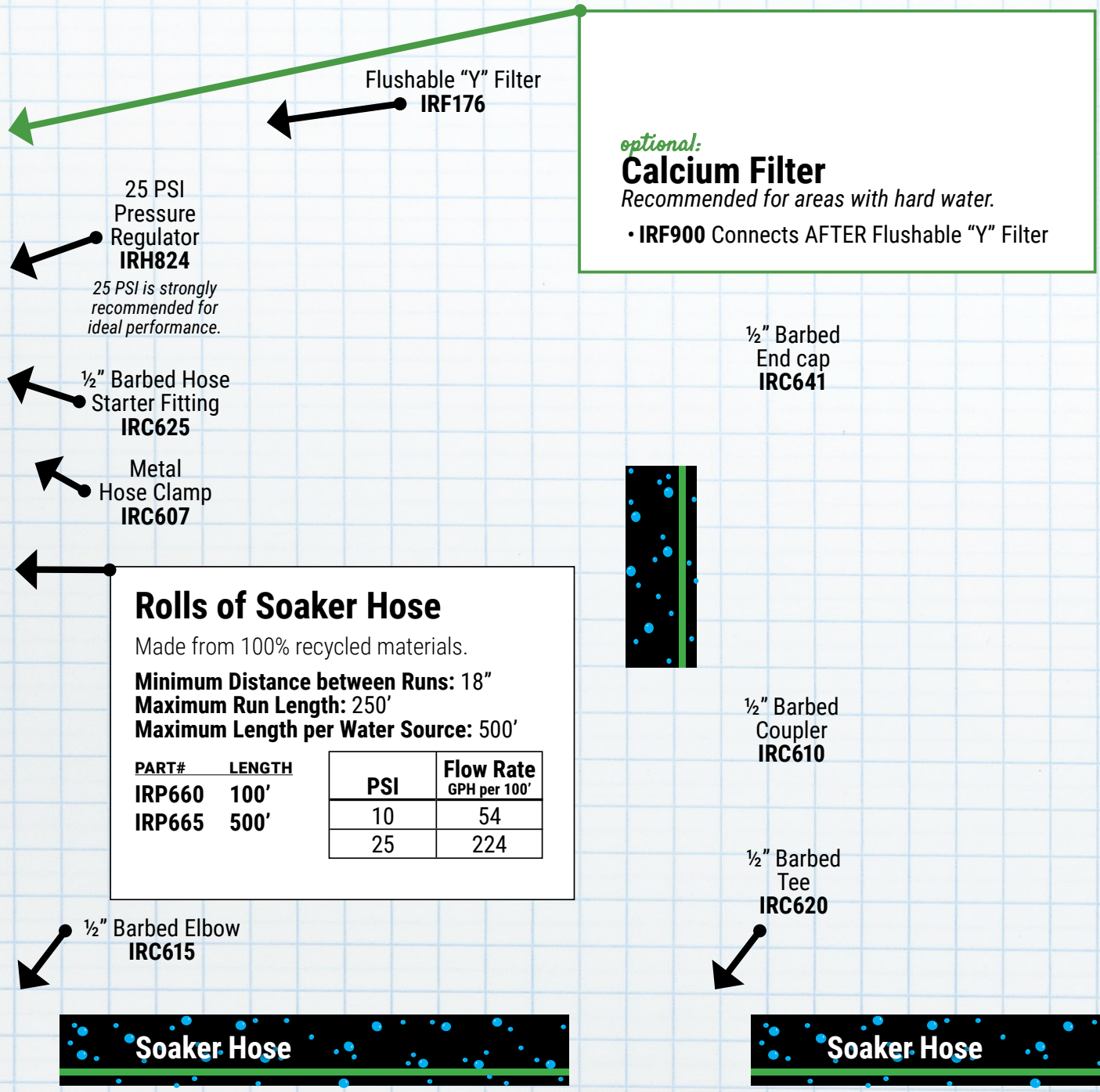


Soaker Hose



Soaker hose is a low flow, low pressure system and requires a regulator. As a guideline, turn faucet a ½ turn, if your hose sprays you have too much pressure. A 22–25 PSI regulator is recommended for ideal performance. Burst strength is 80 PSI.

If your water has heavy mineral deposits, Soaker hose is not recommended. Soaker hose is not recommended for hilly terrain. Should be used on flat surfaces not exceeding a 2' rise over 100'. It is not designed for tight turns. The hose can kink and then will break apart at that point. Soaker hose can be used in straight lines or snaked back and forth between plants. For best results, bury the hose at least 4" deep.



optional:
Calcium Filter
 Recommended for areas with hard water.
 • IRF900 Connects AFTER Flushable "Y" Filter

25 PSI Pressure Regulator
IRH824
25 PSI is strongly recommended for ideal performance.

Flushable "Y" Filter
IRF176

½" Barbed Hose Starter Fitting
IRC625

Metal Hose Clamp
IRC607

½" Barbed End cap
IRC641

Rolls of Soaker Hose

Made from 100% recycled materials.

- Minimum Distance between Runs: 18"
- Maximum Run Length: 250'
- Maximum Length per Water Source: 500'

PART#	LENGTH	PSI	Flow Rate GPH per 100'
IRP660	100'	10	54
IRP665	500'	25	224

½" Barbed Coupler
IRC610

½" Barbed Tee
IRC620

½" Barbed Elbow
IRC615

Soaker Hose

Soaker Hose

Mini Sprinkler Assembly

A **300° Jet Sprinkler** is shown, however, you can connect any of the **Micro-Sprayers with Flow Control**, **Micro Sprinklers**, or **Jet Sprinklers** either directly into $\frac{1}{4}$ " poly or into a riser.

If using a riser, connect the opposite end of the riser into either a $\frac{1}{4}$ " coupler to insert it into $\frac{1}{2}$ " poly, or into the 8" Plastic Rigid Riser Stake. Use stakes to support risers or place $\frac{1}{4}$ " poly into your desired location.

12" Poly
Rigid Riser
IRR643

Stake Assembly
with 24" Riser Lead
and $\frac{1}{4}$ " Barb

IRR660

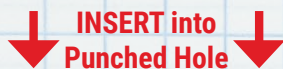
*Move stake to
adjust barb height and
proximity to $\frac{1}{2}$ " poly.*

12" Irrigation
Stake
IRR609

18" Poly
Rigid Riser
IRR644

8" Plastic Rigid
Riser Stake
IRR612

$\frac{1}{4}$ " Threaded
Barb Coupler
IRR655



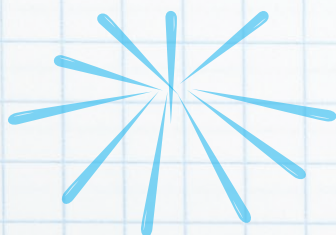
$\frac{1}{2}$ " POLY

Mini Sprinklers

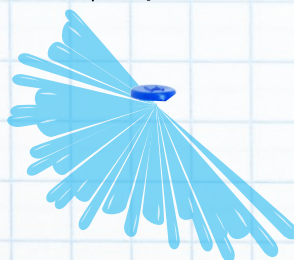
Micro-Sprayers with Flow Control

Customized emitter flows.

Part #	Color	Spray Pattern	Optimal PSI	GPH	Spray Diameter
IRS700	Red	360°	20	0-23.3	up to 20'
IRS705	Blue	180°		0-24	up to 20'
IRS710	Black	90°		0-24.5	up to 18'



360° Micro Sprayer
IRS700



180° Micro Sprayer
IRS705

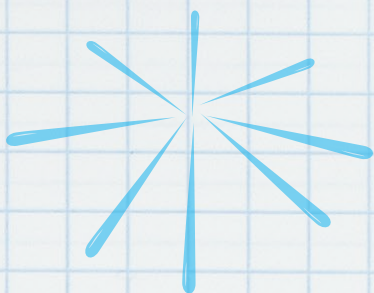


90° Micro Sprayer
IRS710

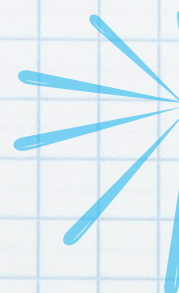
Micro Sprinklers

Stream type spray for moderate water coverage.

Part #	Color	Spray Pattern	Optimal PSI	GPH	Spray Diameter
IRS693	Green	360°	10	17.6	17'
IRS687	Orange			6.8	10'
IRS681	Black			4.5	8'
IRS695	Green	180°		17.6	17'
IRS689	Orange			6.8	10'
IRS683	Black			4.5	8'



360° Agri-Jet
Micro Sprinkler
IRS693 (PICTURED)
IRS687
IRS681



180° Agri-Jet
Micro Sprinkler
IRS695 (PICTURED)
IRS689
IRS683

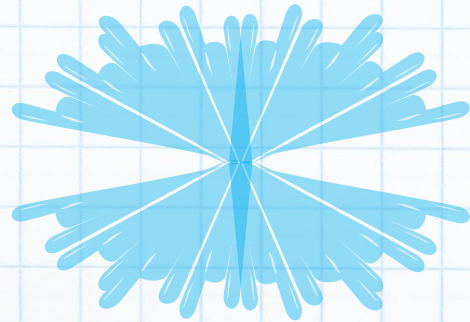
Jet Sprinklers

Different spray patterns saturate areas at a low pressure.

Part #	Color	Spray Pattern	Optimal PSI	GPH	Spray Diameter
IRS665	Red	90°	10	18.2	18'
IRS655	Blue			7	10'
IRS645	Green			4.4	7'
IRS663	Red	180°		18.2	11'
IRS653	Blue			7	7'
IRS643	Green			4.4	6'
IRS661	Red	300°		18.2	10'
IRS651	Blue			7	7'
IRS641	Green			4.4	6'
IRS669	Red	30° / 30°	18.2	12'	
IRS649	Black		4.4	7'	



90° Jet Sprinkler
IRS665 (PICTURED)
IRS655
IRS645



300° Jet Sprinkler
IRS661 (PICTURED)
IRS651
IRS641



180° Jet Sprinkler
IRS663 (PICTURED)
IRS653
IRS643



30° / 30° Jet Sprinkler
IRS669 (PICTURED)
IRS649

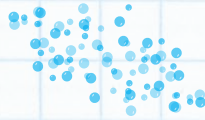
Sprayers

Fogger Mister

Misting greenhouse seedlings Create high humidity. Flow rate is 2 GPH at 20 psi

- IRE200

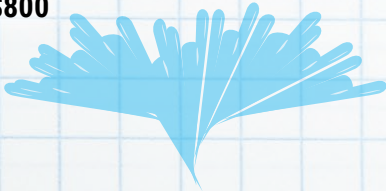
 INSERT into Punched Hole



Spectrum Spray 360°

Adjustable spray from 0-20 GPH. Maximum 30 PSI covers 108."

- IRS805 On Stake
- IRS800



Shrubber®

Adjustable spray from 0-15 GPH. Maximum 30 PSI covers 26"

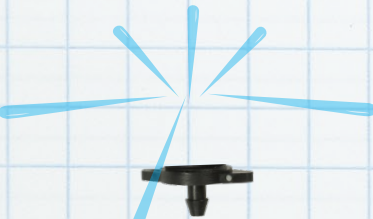
- IRE205 On Stake
- IRE206



Adjustable Micro Bubbler®

Adjustable spray from 0-30 GPH. 15-30 PSI covers 0-18"

- IRE211 On Stake
- IRE210



½" POLY

½" POLY

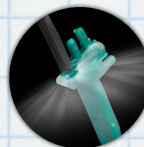
⅛" Barbed Coupler
IRC230

⅛" Poly
IRP200
100' Roll

Aquatic Tri-Tip Sprayer

3 flow rates in one! 4.8, 7.8, & 10.8 GPH at 10 PSI. Turn off by inserting poly into the side spike.

- IRE250



Ground Staples
EC407 Box of 1,000
Secure poly to the ground.

Emitters

1/4" Short
Barbed Coupler
IRC210

OR

1/4" Long
Barbed Coupler
IRC211

1/4" Barbed Tee
IRC220

**Mini-Flo
Inline Emitters**
*Use where customized
emitter spacing is needed.*

Part #	Color	Optimal PSI	GPH
IRE401	Red	10-30	0.5
IRE402	Black		1

Short Stake
IRR605

*Put your 1/4" poly
where you want it*

Pressure-Compensating Emitters
Use where inconsistent water pressure is a problem.

Part #	Color	Optimal PSI	GPH
IRE301	Red	15-50	0.5
IRE302	Black		1
IRE303	Green		2

VariFlow™
1/4" In-Line Valve
IRH415

*Insert into 1/2" poly or
in between 1/4" poly.*

Flag Emitters

Deliver water to individual plants.

Part #	Color	Optimal PSI	GPH
IRE201	Black	10-15	1
IRE202	Blue		2
IRE204	Green		4