



# CENTRASENSE®

## CERTIFIED UL705 DEDPV CLOTHES DRYER BOOSTER FAN



### Solve residential electric dryer vent problems. Meets IRC2015 Building Code.

- Can be installed in any orientation
- Uses Suncourt's patented Centrasense® technology
- Remote indication panel shows duct system and fan status at a glance
- Reliable on/off operation using Suncourt's exclusive Easy-Mount Current Sensor™
- Duct cleanout sleeves included for periodic inspection/cleaning without removing the fan.
- Suitable for dryer ducts from 25 to 100 equivalent feet.
- Perfect for new construction and can be easily added to existing dryer vents.

#### FAN SPECS

Model	Duct Dia.	Amps	Watts	Volts	Hz
DRM04	4"	0.84	97	120	60

#### FAN PERFORMANCE

Static Pressure Inches Water Column	Airflow in CFM								
	0.0"	0.2"	0.4"	0.6"	0.8"	1"	1.2"	1.4"	1.6"
DRM04	205	180	165	150	135	115	90	60	35

Suncourt's DRM04 DEDPV Clothes Dryer Booster Kit is designed to mitigate underperforming dryer duct systems to the highest safety standard, providing these benefits:

- Shorter drying time
- Less wear and tear on the dryer
- Reduced lint buildup inside dryer and duct

#### Features:

- Remote indicator can be flush-mounted on wall or mounted on a standard electrical box
- Clip-on dryer current sensor for hassle-free installation and stable interlock with clothes dryer
- External rotor motor for quiet operation
- 158°F/70°C air temperature rating
- Thermal overload and high temperature limit protection
- 5 year limited warranty
- Certified to the DEDPV supplement of UL705 and CSA22.2 113 safety standards

#### MONITOR PERFORMANCE

On delay:	3 seconds
Off delay:	10 seconds
Error indication:	≤ 2 seconds

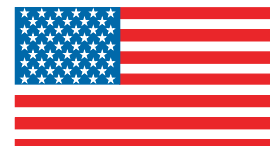
#### VISUAL INDICATIONS

- Low airflow
- Low RPM / high temperature limit
- Current sensor unplugged



**SUNCOURT INC.**  
Durant, IA 52747-0040  
1.800.999.FANS

**WWW.SUNCOURT.COM**

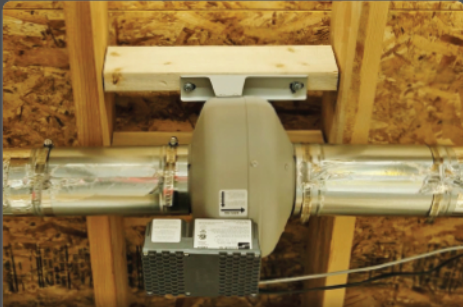


**Assembled  
in USA**

Copyright© 2019  
CATDRM04-0419



### DRM04



#### STEP 1

Mount dryer booster fan and connect to ductwork using the cleanout sleeves.



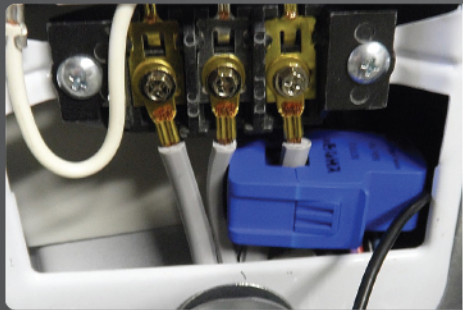
#### STEP 2

Mount the Remote Operation Indicator Panel. *\*Indicator Panel is pre-wired to the fan by the manufacturer*



#### STEP 3

Disconnect power to clothes dryer & clip current sensor onto a hot conductor in the dryer wiring compartment.



#### STEP 4

Tuck the current sensor back into the compartment.



#### STEP 5

Replace panel cover ensuring current sensor wire is not pinched or damaged.



#### STEP 6

Plug the current sensor wire into the jack on the Remote Indicator Panel.



#### STEP 7

Re-connect power to dryer and plug booster fan into standard outlet.

DRM04-CUR-SWIT-0321

## QUALITY | COMFORT | CONTROL