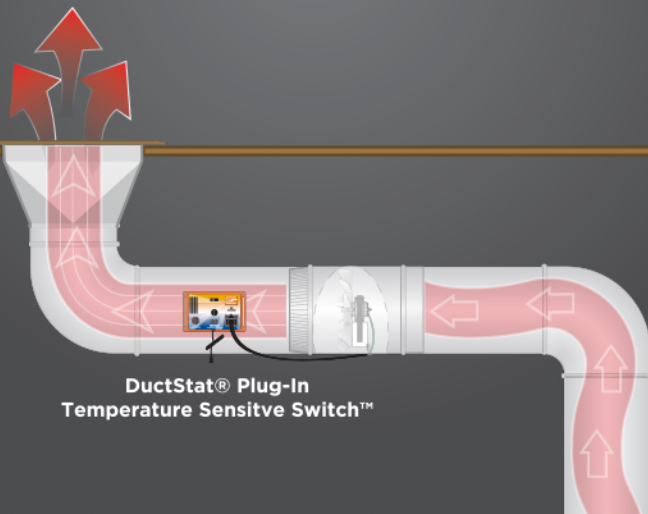




# DUCTSTAT®

## FOR ROOMS THAT ARE TOO HOT OR TOO COLD

The DuctStat® Plug-In Temperature Sensitive Switch™ will turn a device on or off due to temperature rise or temperature fall from the user adjustable set point.

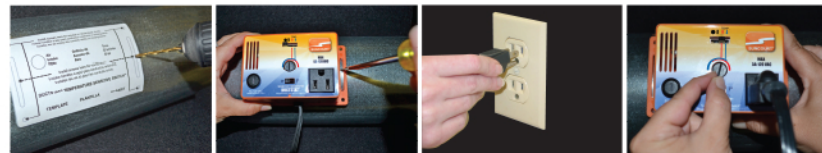


DuctStat® Plug-In Temperature Sensitive Switch™

## TEMPERATURE SENSITIVE SWITCH MODEL: DS100



- Automatically controls Suncourt® fans
- Adjustable temperature range: 40°F (4°C) to 110°F (43°C)
- Mounts on ductwork or wall mount for ambient room temperature control
- Sensitive electronic circuit
- Plugs into 110V receptacle
- 5 Amp maximum load, replaceable 5 Amp fuse
- Min/Max switch for applications with small temperature differential



Model	Unit Weight	Unit Dimensions	Volts	Cord Length
DS100	1.25 lbs	5-1/2"x3-1/4"x2-1/4"	110VAC 60Hz	6'

## QUALITY | COMFORT | CONTROL

CATDS100-0321