

# IPHONE XS

## BATTERY REPLACEMENT GUIDE

T E C H X S

# TOOLS CHECKLIST

Check to ensure you received all of the following tools in your TechXS Repair Kit.  
Each tool plays a role in helping to complete this repair!



Pentalobe Screwdriver  
(PENTALOBE)

This is the blue driver.



Tri Point Screwdriver  
(TRI POINT)

This is the gold driver.



Phillips Head Screwdriver  
(PHILLIPS)

This is the silver driver.



Flat Head Screwdriver  
(FLAT HEAD)

This is the red driver.



Plastic Pry Tool  
- Black  
(P-PRY TOOL)

Long, black, plastic tool.



Plastic Triangle Pick  
- Blue  
(BLUE PICK)

Small, blue guitar pick.



Plastic Triangle Pick  
- White  
(WHITE PICK)

Small, white guitar pick.



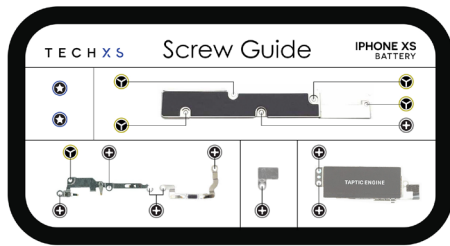
Suction Cup  
- Clear  
(SUCTION CUP)

Used to help open device.



Metal Pry Tool  
- Metal  
(M-PRY TOOL)

Black, rotatable stand.



TechXS' Custom Magnetic  
Screw Chart  
(SCREW GUIDE)

To keep track of your loose screws.



Screen Holder  
- Black  
(HOLDER)

Small black plastic holder.



Brush  
- Black  
(BRUSH)

Small black brush.



Tweezers  
- Black  
(TWEEZERS)

Black fine point tweezers.

Welcome to TechXS' written iPhone XS battery repair guide!

This guide has been prepared in reference to the tools and parts purchased in TechXS' DIY iPhone XS battery replacement kit, and may not apply to a repair conducted without these tools and parts.

Rest-assured, while completing this repair you are following the steps and procedures prepared by experienced Repair Technicians with expertise in training and instructing beginners through the repair process.

Read/watch our guides carefully and you will feel confident in conducting this repair on your own, time and time again. Sit down, get comfortable and let's get started!

## Backup your device

---

Repairing a smartphone brings the risk of potentially damaged key components that may lead to data loss. Before repairing, we advise that you securely back up your device.

To find out how to backup your iPhone, visit [www.techxs.com.au/backup-device](http://www.techxs.com.au/backup-device)

## Important Tips

---

### Take your time

We estimate the time to complete this repair to be 20-30 minutes, on average. We advise that you don't rush through the steps, as most mistakes are made when adequate care is not taken.

### Be gentle

Remember, the hardware you are handling is delicate, and should be treated as such.

### Lighting

Make sure you can clearly see the small components you are working on. Conducting the repair in a well-lit room, preferably with a lot of natural light is advised. A side lamp next to your work space may also be suitable.



## BEFORE YOU BEGIN

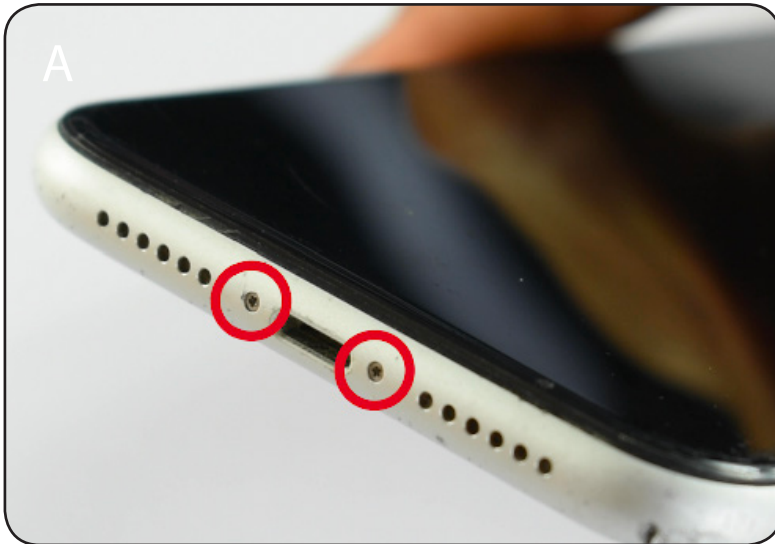
It is recommended you watch the video version of this repair guide online. Visit our Youtube channel to find your device and relevant video guide:  
[www.youtube.com/techxs\\_au](http://www.youtube.com/techxs_au)

# STEPS FOR COMPLETION

1.	Open the Screen	
	<a href="#">Slide to power off .....</a>	6
	<a href="#">Remove Pentalobe Screws .....</a>	7
	<a href="#">Apply Suction Cup .....</a>	7
	<a href="#">Use Pick and M-Pry tool to separate screen .....</a>	7, 8, 9
2.	Remove the Screen	
	<a href="#">Remove metal plate covering battery screen and front camera connector .....</a>	10
	<a href="#">Disconnect battery connector, front camera cable and two screen cables .....</a>	10, 11, 12
3.	Remove Taptic Engine and Loudspeaker	
	<a href="#">Remove the two small brackets below Taptic Engine and speaker .....</a>	13
	<a href="#">Remove Speaker and Taptic Engine .....</a>	13, 14, 15, 16
4.	Remove Battery From Your Device	
	<a href="#">Remove four adhesive tabs .....</a>	18
	<a href="#">Remove battery from device .....</a>	19
5.	Install the New Battery	
	<a href="#">Apply new battery .....</a>	19, 20
6.	Re-apply the Taptic Engine and Loudspeaker	
	<a href="#">Re-apply speaker and Taptic Engine .....</a>	20, 21, 22
	<a href="#">Re-apply two small brackets below Taptic Engine and speaker .....</a>	23
7.	Clean Frame of Phone From Excess Adhesive	
	<a href="#">Clean excess adhesive from frame .....</a>	23
8.	Lay New Adhesive On Frame	
	<a href="#">Lay the new adhesive before re-applying the screen .....</a>	24, 25
9.	Re-apply Your Screen	
	<a href="#">Re-connect battery connector, front camera cable and two screen cables .....</a>	26, 27, 28
	<a href="#">Re-apply metal plate covering battery screen and front camera connector .....</a>	28
10.	Close and Secure the Screen	
	<a href="#">Close the phone by clipping new screen into frame.....</a>	28
	<a href="#">Screw in Pentalobe screws .....</a>	28, 29

# 1. Open the screen

Tools: PENTALOBE | METAL PRY TOOL | PICK | SUCTION CUP



A) Hold the power/sleep button on the right side and the volume down key on the left side until the 'slide to power off' shows up on the screen. Slide the arrow from left to right.

Note: If it is not possible to power off your device, extra care must be taken to ensure step 4(B) is completed before the screen is disconnected.



B) Using the blue PENTALOBE Screwdriver, remove the two Pentalobe screws located at the bottom of the device near the charging port.

Apply adequate pressure and rotate anticlockwise.

Press the SUCTION CUP onto the lower half of the screen.



C) Insert METAL PRY TOOL here, between the frame and screen. Ensure to angle the tool at a 90 degree angle to the table. Use the SUCTION CUP as an aid in creating a gap



D & E) The tip of the METAL PRY TOOL should insert 2-3mm. Next, lift the corner of the screen from the frame by swinging the METAL PRY TOOL to a 180 degree angle

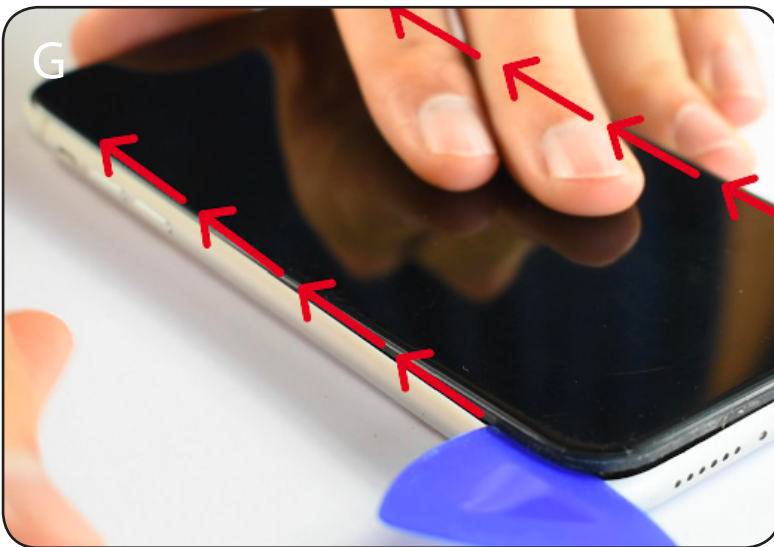
Take note of how deep our METAL PRY TOOL is and try to replicate







F) Insert the PICK right beside the METAL PRY TOOL. You may need to apply some downward pressure to the METAL PRY TOOL to widen the gap



G) Slide the PICK up either side of the phone to break the adhesive holding the screen down



H) Follow the PICK along one of the unadhered edges to the top of the screen, releasing the adhesive and clips.





I) The screen of your iPhone opens like a book to the right. Be careful not to put too much strain on the cables located on the right side while opening the screen.

Warning: Ensure to slightly lift the screen away from the housing before beginning to swing the screen open, this is because there are clips down the right hand side that could potentially get caught.



J) Once the screen is open, lay it down beside the frame

Note: while performing this step ensure to push the screen in at the same time as laying it down. This will ensure there is no strain or damage caused to the cables or connectors.

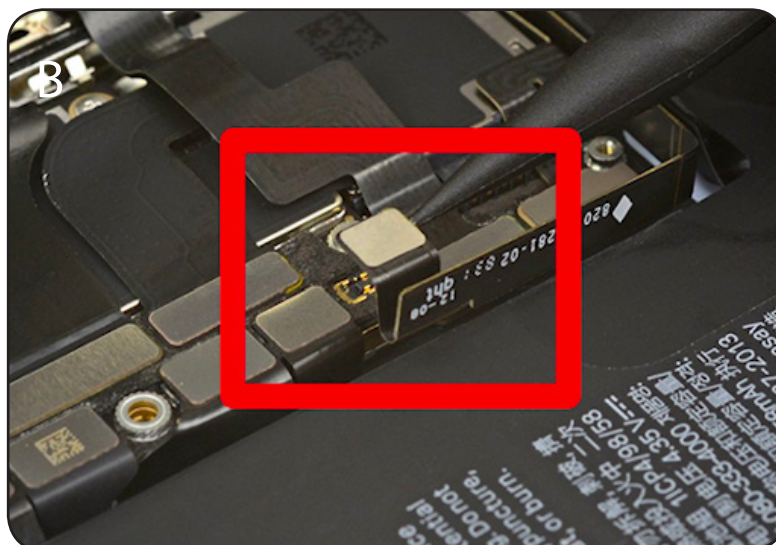
## 2. Remove The Screen

Tools: TRI POINT | PHILLIPS | TWEEZERS



A) Using the gold TRI POINT screwdriver, remove the five screws holding down the metal plate covering the battery/screen and front camera cables.

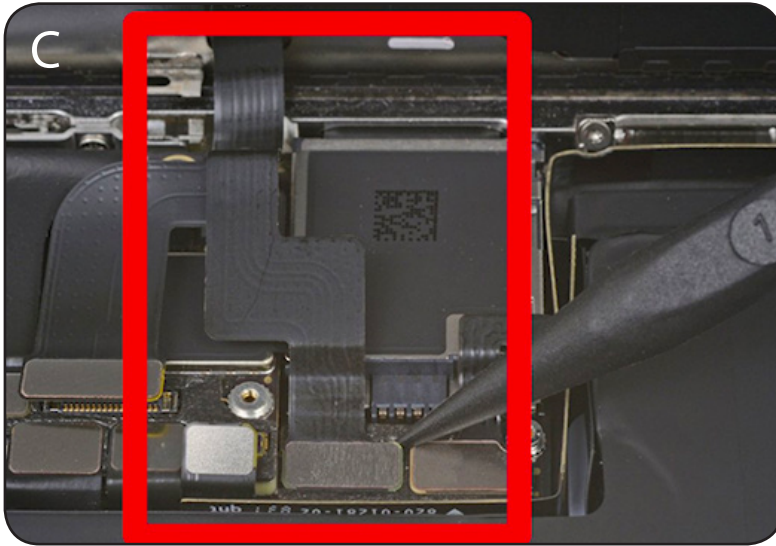
Apply adequate pressure and rotate anti-clockwise.



B) Using the flat end of the PRY TOOL, unclip battery connector cable from its socket.

Place edge of PRY TOOL just under the connector and slowly rotate anti-clockwise to disconnect.

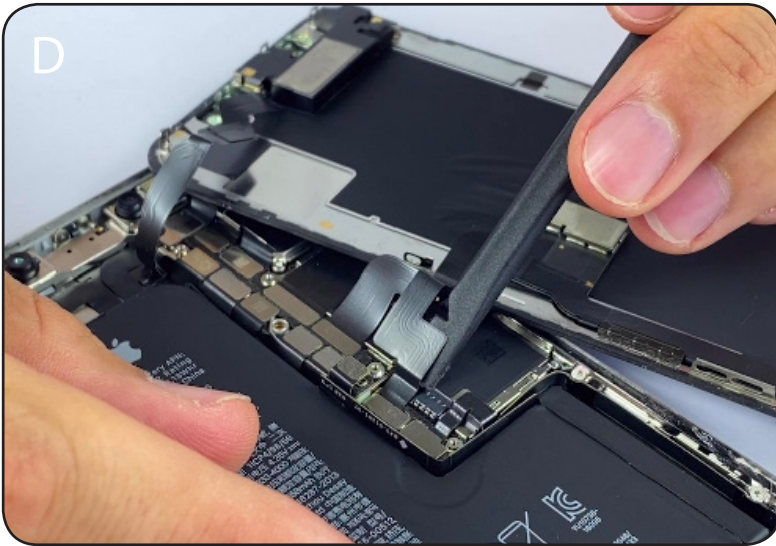
Note: Leave the battery plug seated upright, away from the socket to ensure there will be no power flowing through the device



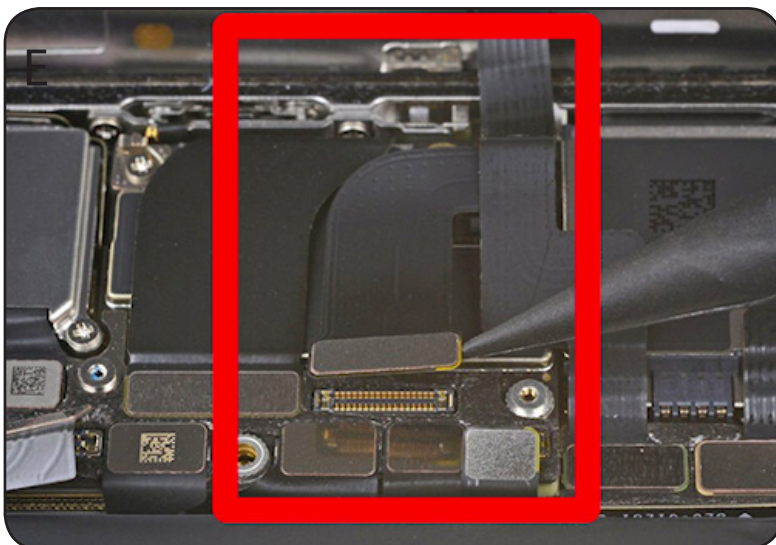
C) Using the flat end of the PRY TOOL, disconnect the first screen cable.

WARNING: Never unclip the screen connectors before disabling the battery connector first (Step 5 above).

If there is still live power running through the phone when unplugging the screen, the backlight (which allows you to see picture on the screen) could potentially blow.

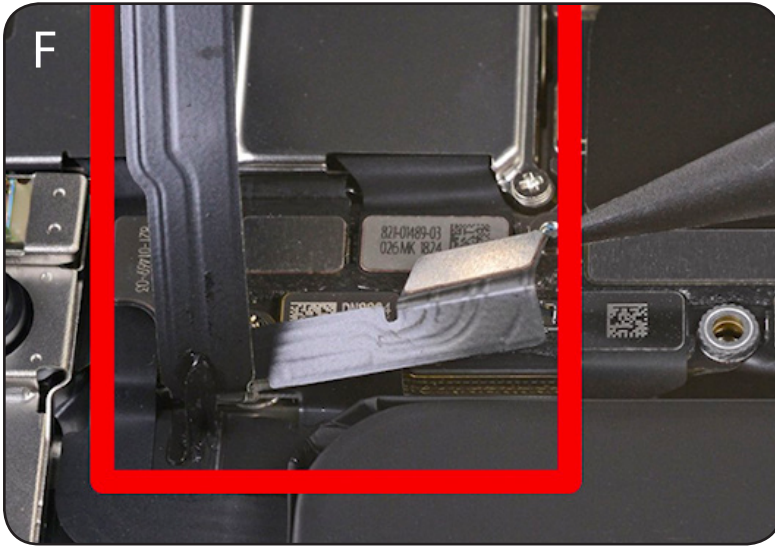


D) The easiest way to disconnect all cables is to follow each cable from the rear end down to the connector and it should disconnect with minimal resistance

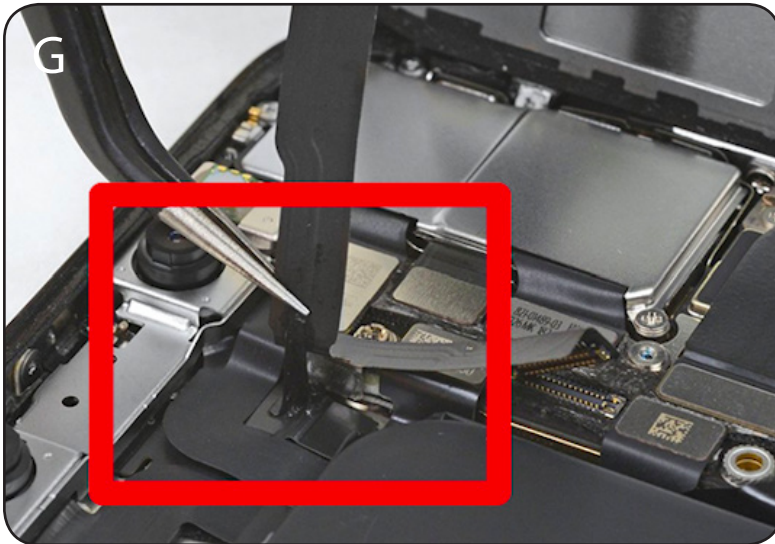


E) Using the flat end of the PRY TOOL, disconnect the second screen cable.





F) Using your PLASTIC PRY TOOL disconnect the Earpiece cable.



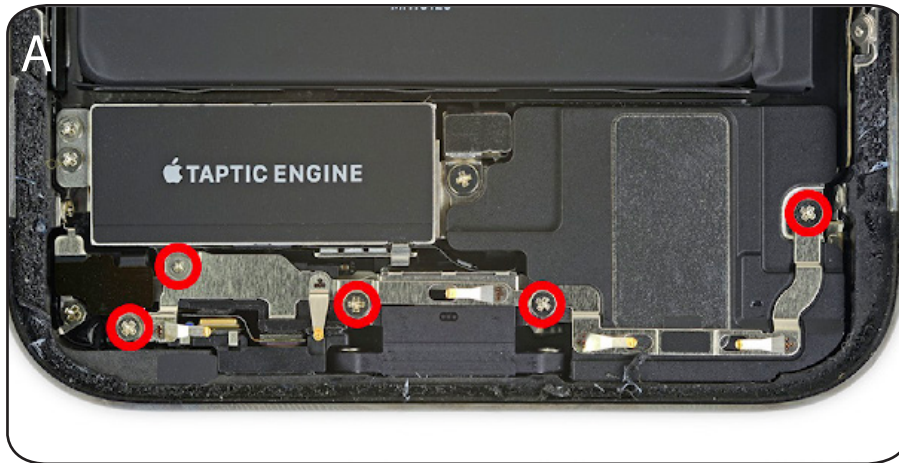
G) Using your TWEEZERS separate the Earpiece cable from the small bit of adhesive holding it in.



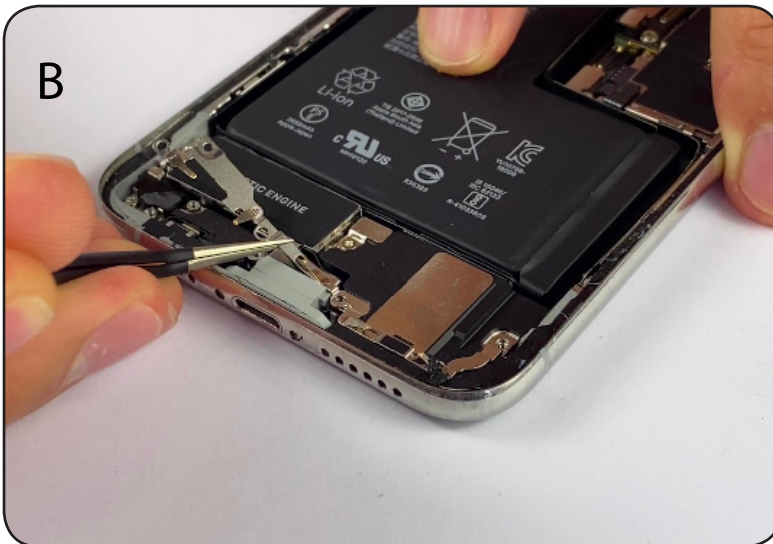
H) The screen is now free, remove it and continue on-to the next step.

### 3. Remove Taptic Engine and Loudspeaker

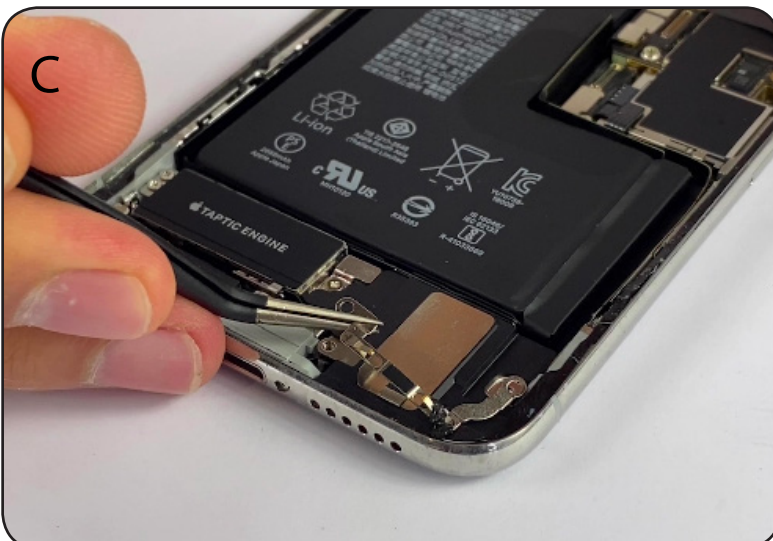
Tools: PHILLIPS | TRI POINT | TWEEZERS | PLASTIC PRY TOOL



A) Using your gold TRI POINT screwdriver and silver PHILLIPS screwdriver, Remove the five screws securing the two brackets below the Taptic Engine and main speaker.

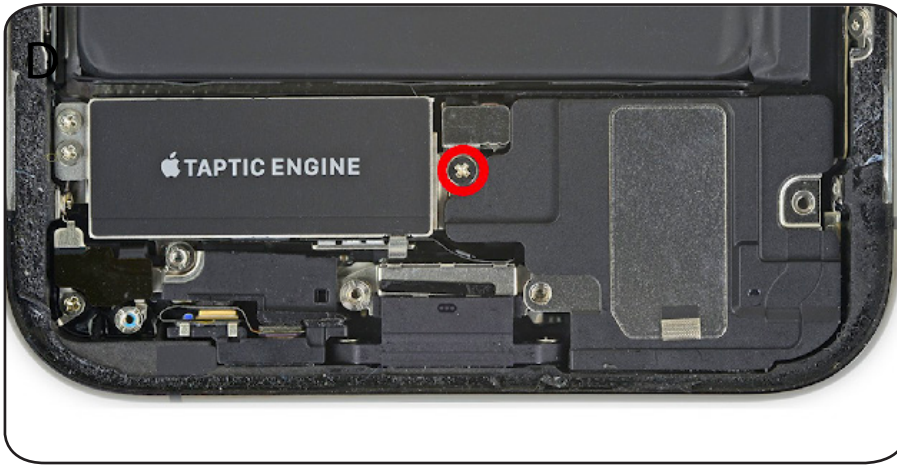


B) Using your TWEEZERS remove the first left hand side bracket.

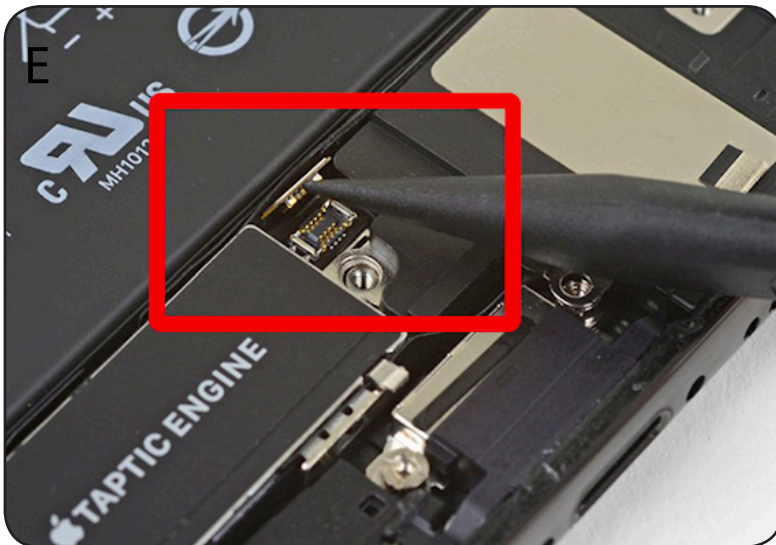


C) Using your TWEEZERS remove the second right hand side bracket.





D) Using your PHILLIPS screwdriver remove the screw securing the speaker connector cover



E) Using your PLASTIC PRY TOOL unclip the speaker connector



F) Gently move the connector out of the way when performing the next step.



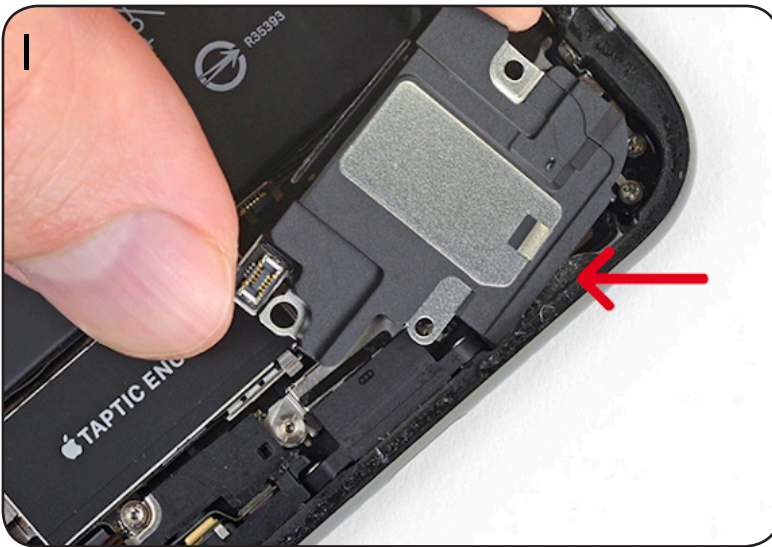
G) Insert a spudger under the top edge of the speaker, near the edge of the iPhone's case.

Gently pry up and lift the top edge of the speaker slightly.



H) While prying up the speaker, use tweezers to peel away the plastic bumper strip/black tape from the top edge of the speaker.

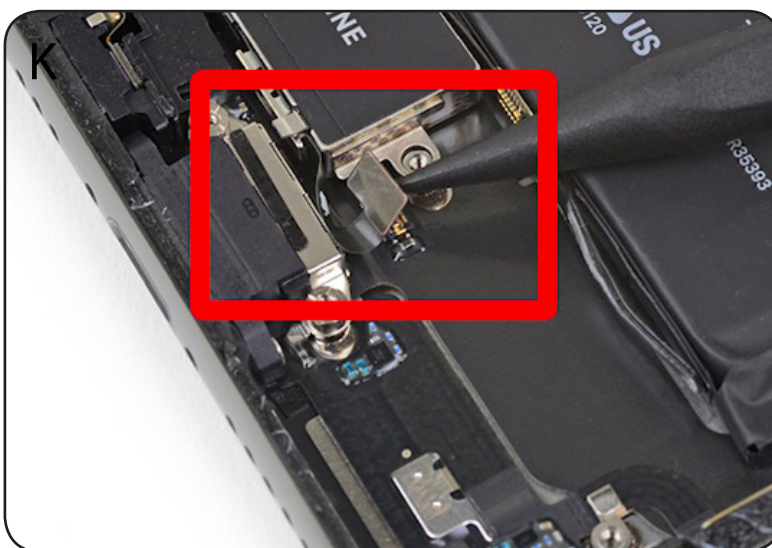




I) Rock the speaker side to side while pulling with some force to separate it from the adhesive holding it in on the bottom of the speaker.



J) Using your PHILLIPS screw-driver remove the two screws



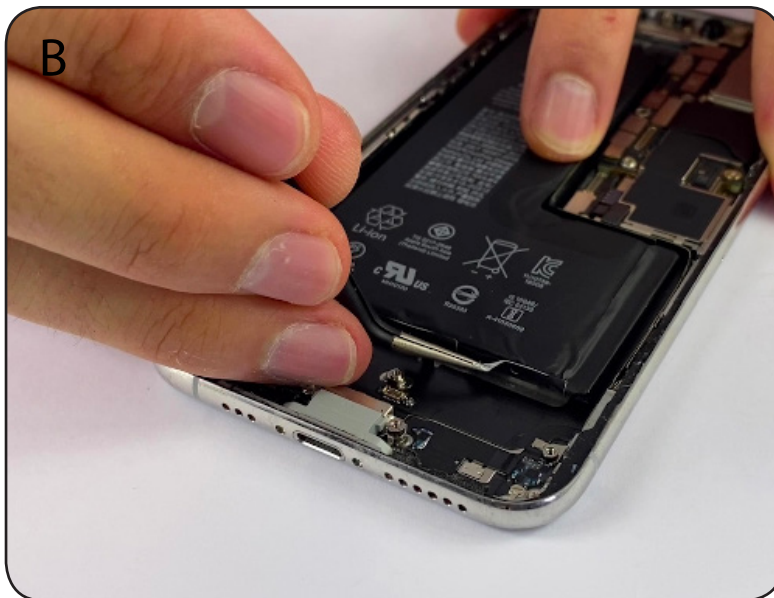
K) Using your PLASTIC PRY TOOL unclip the Taptic Engine cable and then remove the Taptic Engine from the device.

## 4. Remove battery from your device

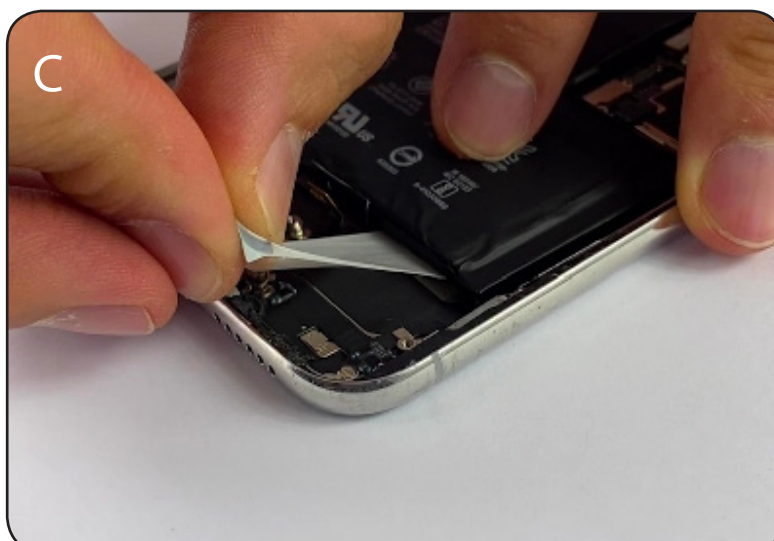
Tools: TWEEZERS



A) Remove the four adhesive tabs holding the battery in place.



B) Using your TWEEZERS peel back the first battery adhesive tab.



C) Pull the tab slowly and gently at an angle as parallel to the work bench as possible.

Repeat the above step to separate the remaining three adhesive tabs from the bottom and top of the battery.

Note: Try to keep your fingers as close to the battery as possible while pulling, as stretching it too far can result in breaking it.

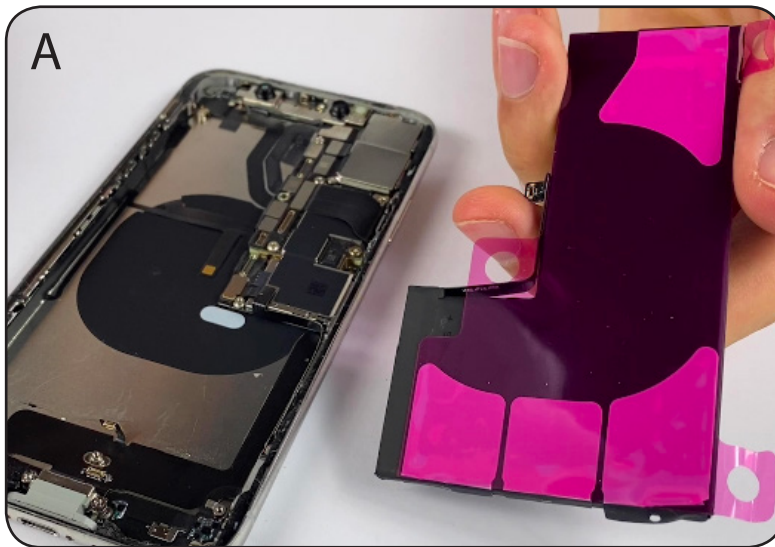




D) Take care not to damage the speaker cable connector, near the center adhesive tab.

## 5. Install the new battery

Tools: NONE



A) Remove the protective film getting it ready to install into your device.



B) When installing, try to align the battery cable with its corresponding connector to ensure plugging it in is nice and easy.

Note: Be sure to not actually plug it in or touch it to the connector before re-installing the screen.



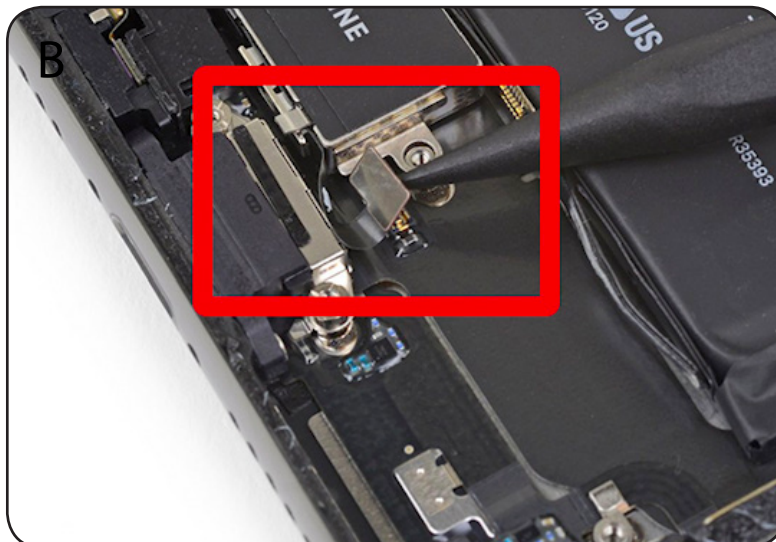
C) Apply some pressure around the battery once it is inserted into your device to allow the adhesive to set.

## 6. Re-apply the Taptic Engine and Loudspeaker

Tools: PHILLIPS | TRI POINT | TWEEZERS



A) Using your PHILLIPS Screwdriver, re-apply the Taptic Engine and two screws to secure it.

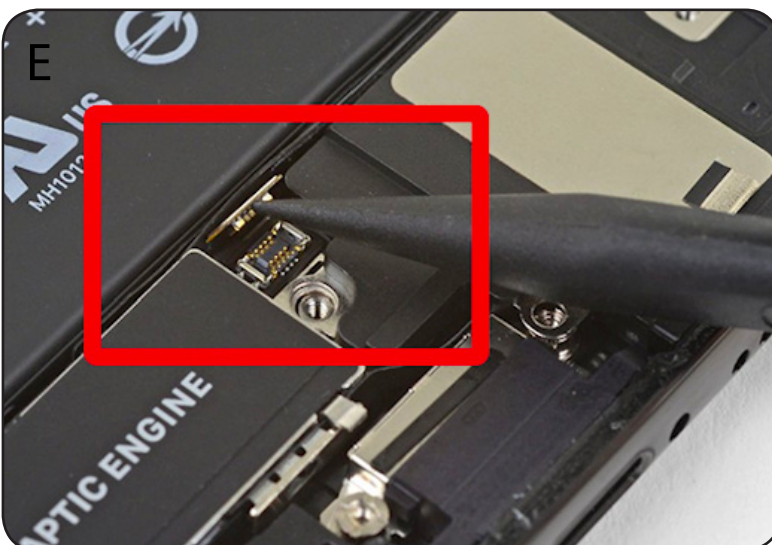


B) Plug in the Taptic Engine cable.





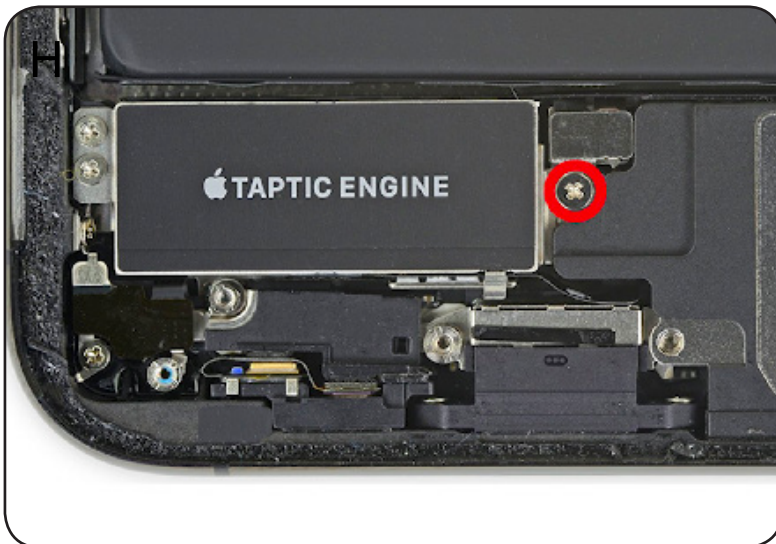
C/D) Re-apply the Speaker, ensure to gently move the speaker cable out of the way when doing so.



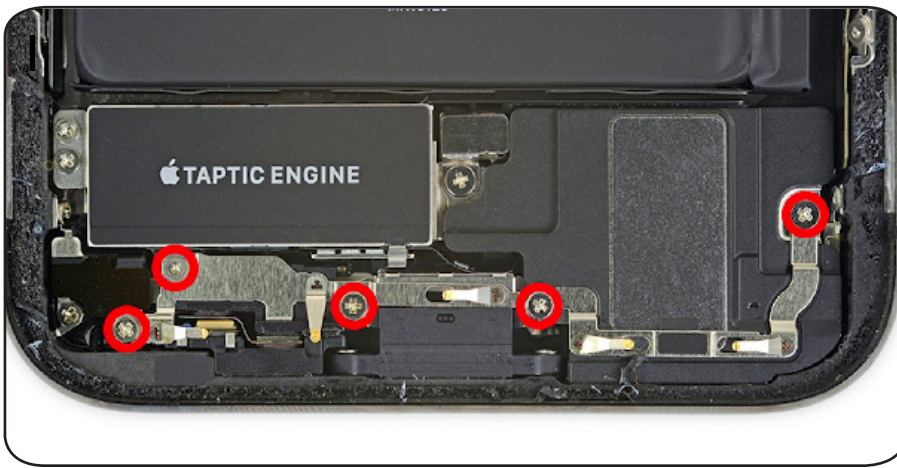
E) Plug the speaker cable back in.



F/G) Re-apply the Plastic Bumper Strip/Black Tape to the top of the speaker.



H) Using you PHILLIPS screw-driver re-apply the speaker connector cover and the single screw to secure it.



I) Using your PHILLIPS AND TRI POINT screwdriver, re-apply the two brackets and the five screws to secure them.

## 7. Clean Frame of Phone From Excess Adhesive

Tools: PLASTIC PRY TOOL



A) Using the flat end of the PLASTIC PRY TOOL remove as much excess adhesive from the frame of your phone prior to laying the new adhesive down.

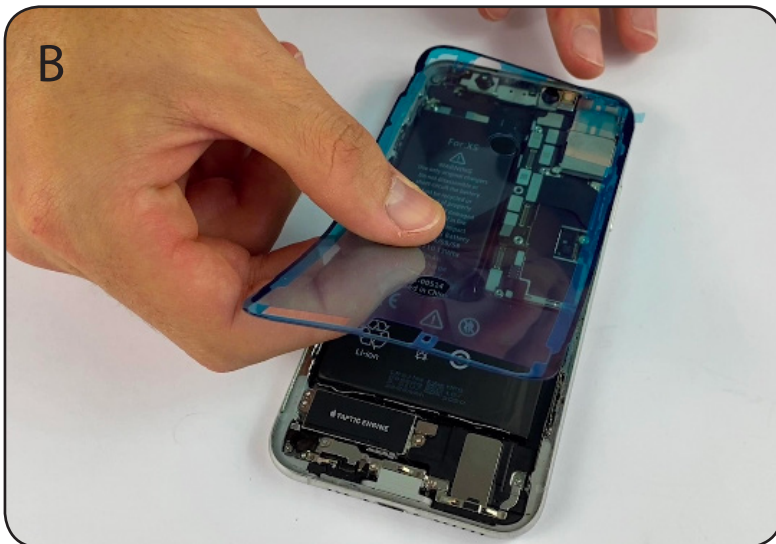


## 8. Lay New Adhesive on Frame

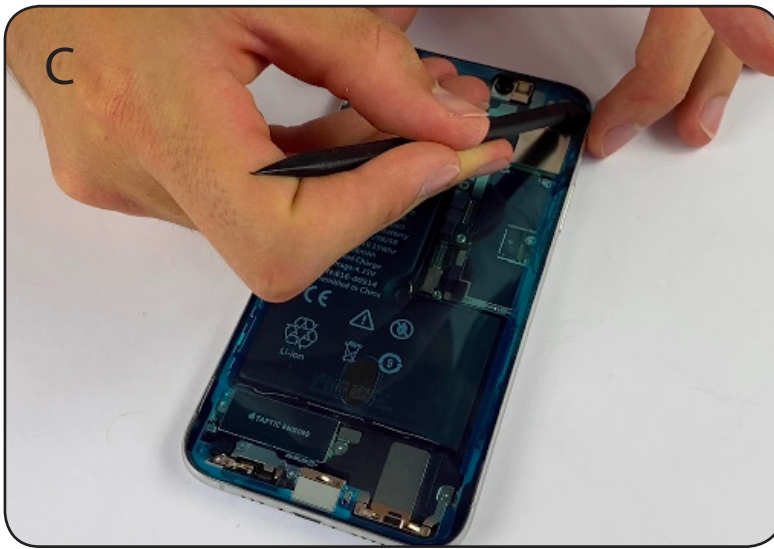
Tools: NONE



A) Peel back the first layer of the new protective film.



B) Slowly and carefully apply the new adhesive to your frame, ensuring it lines up throughout the frame.



C) Using your PLASTIC PRY TOOL, trace around the edge of the adhesive ensuring it sticks to the frame.



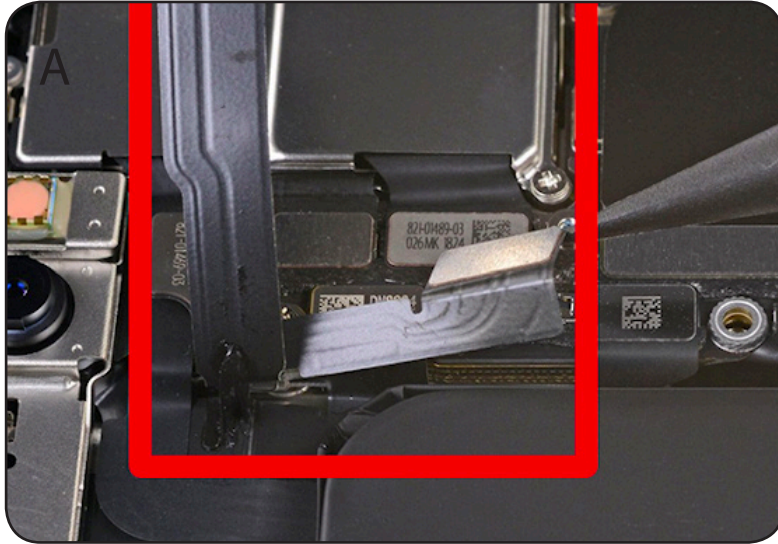
D) Remove the next layer of seal from the adhesive.



E) Remove the last layer of seal exposing the adhesive. Be careful not to allow the adhesive to move from its position. Use your PLASTIC PRY TOOL to re-stick the adhesive to the frame if it happens to move.

## 9. Re-apply your screen

Tool: TRI POINT | PHILLIPS



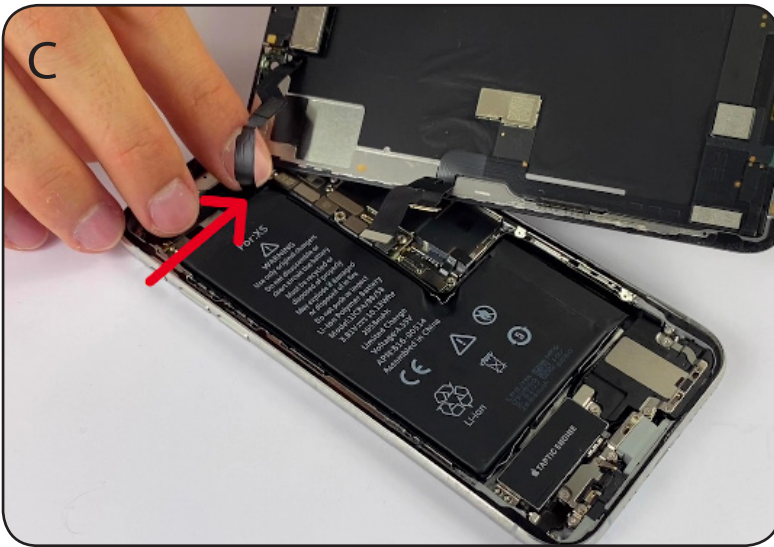
A) Re-connect the Earpiece cable.



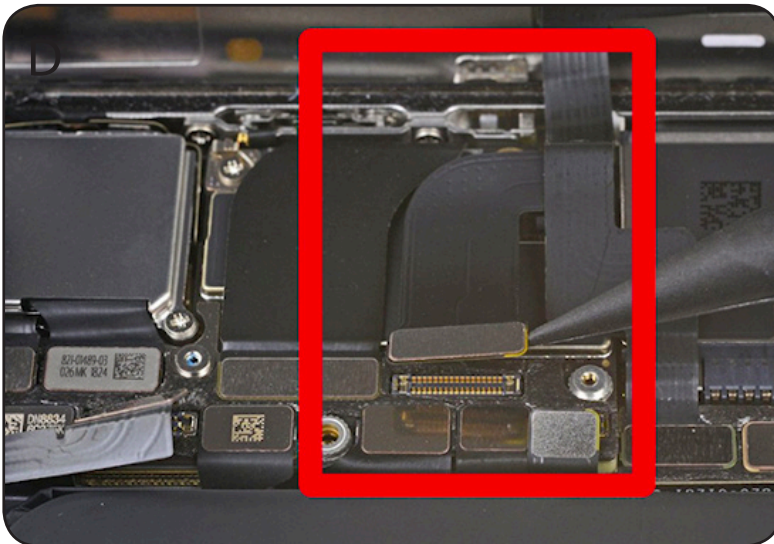
B) Slightly angle the top of the screen towards the inside of the phone. Slide the curved edge of the cable in between the top of the battery and the logic board, and connect.

Note: This is based on feel, gently move the cable around until they feel aligned, then connect. Do not use excessive force

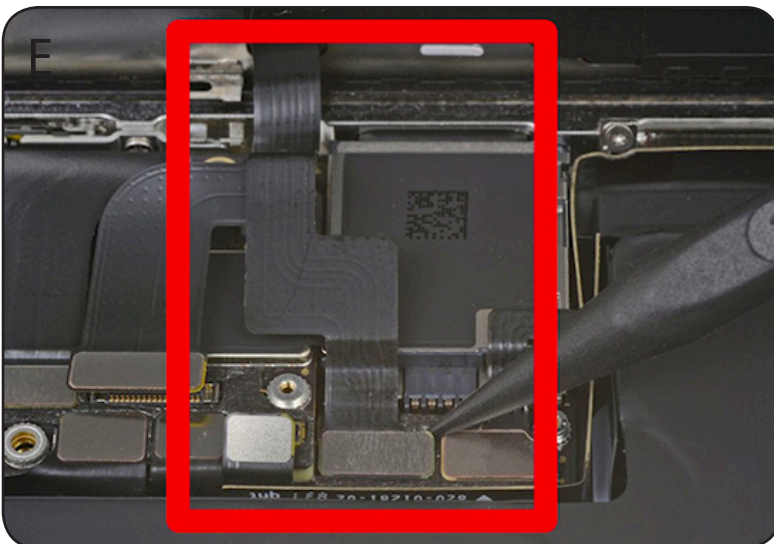




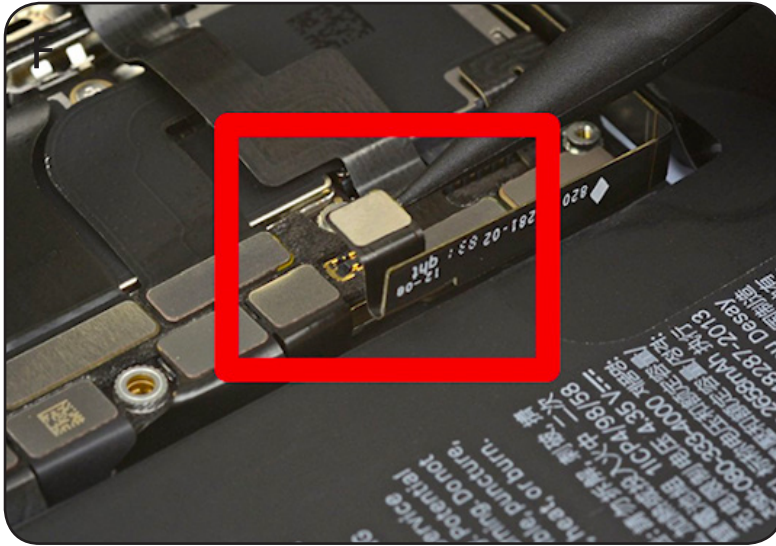
C) With the existing adhesive on the cable stick it down to the frame.



D) Plug the first screen cable in.



E) Plug the second screen cable back in.



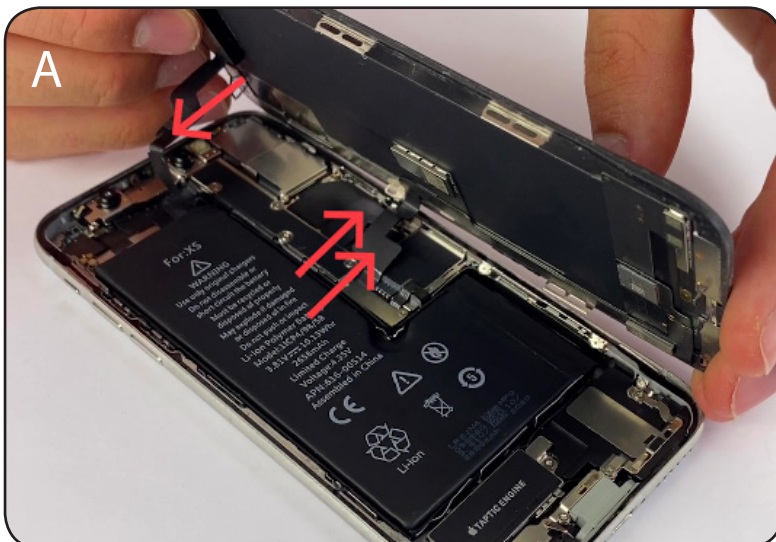
F) Plug the battery in.



G) Using YOUR TRI POINT and PHILLIPS screwdriver, re-apply this bracket and secure it with the five screws.

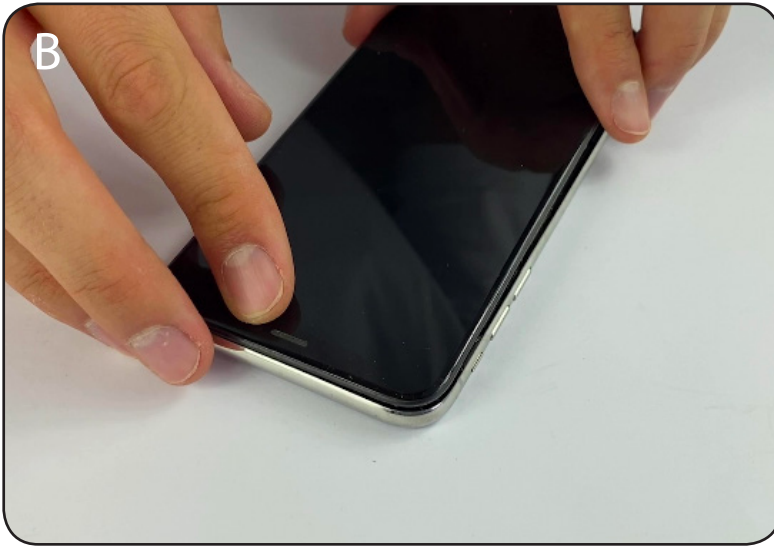
## 10. Close and Secure the Screen

Tools: PENTALOBE



A) Close the screen. Ensure the cable are all folding in the directions of the arrows.





B) Hook the top of the screen into the top of the frame.



C) Gently clip both sides of the screen into the frame.



D) Re-apply the two Pentalobe screws to secure the screen.

THE END

Kits are also available for:

- iPhone 6 Screen & Battery Replacement
- iPhone 6 Plus Screen & Battery Replacement
- iPhone 6s Screen & Battery Replacement
- iPhone 6s Plus Screen & Battery Replacement
- iPhone 7 Screen & Battery Replacement
- iPhone 7 Plus Screen & Battery Replacement
- iPhone 8 Screen & Battery Replacement
- iPhone 8 Plus Screen & Battery Replacement
- iPhone X Screen & Battery Replacement
- iPhone XS Screen Replacement
- iPhone XR Screen Replacement & Battery Replacement
- iPhone XS Max Screen & Battery Replacement

Connect with us online! We would love to hear how your repair went

