

IPHONE XR

BATTERY REPLACEMENT GUIDE

TECHXS

TOOLS CHECKLIST

Check to ensure you received all of the following tools in your TechXS Repair Kit.
Each tool plays a role in helping to complete this repair!



Pentalobe Screwdriver
(PENTALOBE)

This is the blue driver.



Tri Point Screwdriver
(TRI POINT)

This is the gold driver.



Phillips Head Screwdriver
(PHILLIPS)

This is the silver driver.



Flat Head Screwdriver
(FLAT HEAD)

This is the red driver.



Plastic Pry Tool
- Black
(P-PRY TOOL)

Long, black, plastic tool.



Plastic Triangle Pick
- Blue
(BLUE PICK)

Small, blue guitar pick.



Plastic Triangle Pick
- White
(WHITE PICK)

Small, white guitar pick.



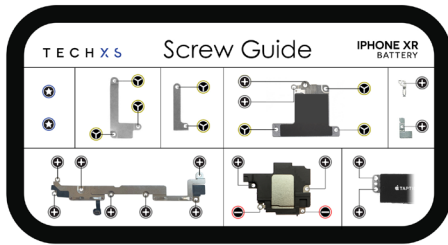
Suction Cup
- Clear
(SUCTION CUP)

Used to help open device.



Metal Pry Tool
- Metal
(M-PRY TOOL)

Black, rotatable stand.



TechXS' Custom Magnetic
Screw Chart
(SCREW GUIDE)

To keep track of your loose screws.



Screen Holder
- Black
(HOLDER)

Small black plastic holder.



Brush
- Black
(BRUSH)

Small black brush.



Tweezers
- Black
(TWEEZERS)

Black fine point tweezers.

Welcome to TechXS' written iPhone XR battery repair guide!

This guide has been prepared in reference to the tools and parts purchased in TechXS' DIY iPhone XR battery replacement kit, and may not apply to a repair conducted without these tools and parts.

Rest-assured, while completing this repair you are following the steps and procedures prepared by experienced Repair Technicians with expertise in training and instructing beginners through the repair process.

Read/watch our guides carefully and you will feel confident in conducting this repair on your own, time and time again. Sit down, get comfortable and let's get started!

Backup your device

Repairing a smartphone brings the risk of potentially damaged key components that may lead to data loss. Before repairing, we advise that you securely back up your device.

To find out how to backup your iPhone, visit www.techxs.com.au/backup-device

Important Tips

Take your time

We estimate the time to complete this repair to be 20-30 minutes, on average. We advise that you don't rush through the steps, as most mistakes are made when adequate care is not taken.

Be gentle

Remember, the hardware you are handling is delicate, and should be treated as such.

Lighting

Make sure you can clearly see the small components you are working on. Conducting the repair in a well-lit room, preferably with a lot of natural light is advised. A side lamp next to your work space may also be suitable.



BEFORE YOU BEGIN

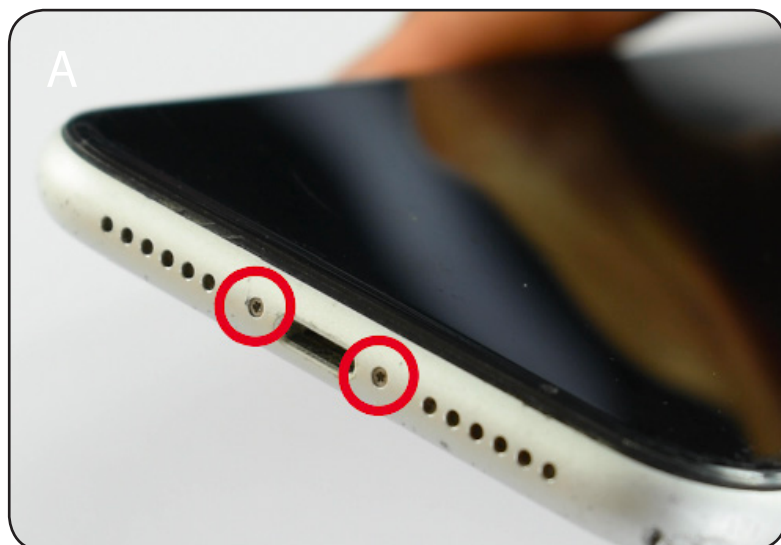
It is recommended you watch the video version of this repair guide online. Visit our Youtube channel to find your device and relevant video guide:
www.youtube.com/techxs_au

STEPS FOR COMPLETION

1.	Open the Screen	
	Slide to power off	5
	Remove Pentalobe Screws	5
	Apply Suction Cup	5
	Use Pick and M-Pry tool to separate screen	6, 7, 8
2.	Remove Shield Plate and Disconnect Battery	
	Remove metal plate covering battery screen and front camera connector	9,10
	Disconnect battery connector, front camera cable and two screen cables	10,11
3.	Remove Taptic Engine and Loudspeaker	
	Remove bracket below Taptic Engine and speaker	11,12,13
	Remove Speaker and Taptic Engine	12,13,14
4.	Remove Battery From Your Device	
	Remove four adhesive tabs	15
	Remove battery from device	16
5.	Install the New Battery	
	Apply new battery	17,18
6.	Re-apply the Taptic Engine and Loudspeaker	
	Re-apply speaker and Taptic Engine	18,19
	Re-apply bracket below Taptic Engine and speaker.....	20
7.	Clean Frame of Phone From Excess Adhesive	
	Clean excess adhesive from frame	21
8.	Lay New Adhesive On Frame	
	Lay the new adhesive before re-applying the screen	21, 22, 23
9.	Re-apply Your Screen	
	Re-connect battery connector, front camera cable and two screen cables	23, 24
	Re-apply metal plate covering battery screen and front camera connector	24, 25
10.	Clip Screen Into Housing and Screw Pentalobes	
	Close the phone by clipping new screen into frame.....	25, 26
	Screw in Pentalobe screws	26

1. Open the screen

Tools: PENTALOBE | METAL PRY TOOL | PICK



A) Hold the power/sleep button on the right side and the volume down key on the left side until the 'slide to power off' shows up on the screen. Slide the arrow from left to right.

Note: If it is not possible to power off your device, extra care must be taken to ensure step 4(B) is completed before the screen is disconnected.



B) Using the blue PENTALOBE Screwdriver, remove the two Pentalobe screws located at the bottom of the device near the charging port.

Apply adequate pressure and rotate anticlockwise.

Press the SUCTION CUP onto the lower half of the screen.



C) Insert METAL PRY TOOL here, between the frame and screen. Ensure to angle the tool at a 90 degree angle to the table. Use the SUCTION CUP as an aid in creating a gap



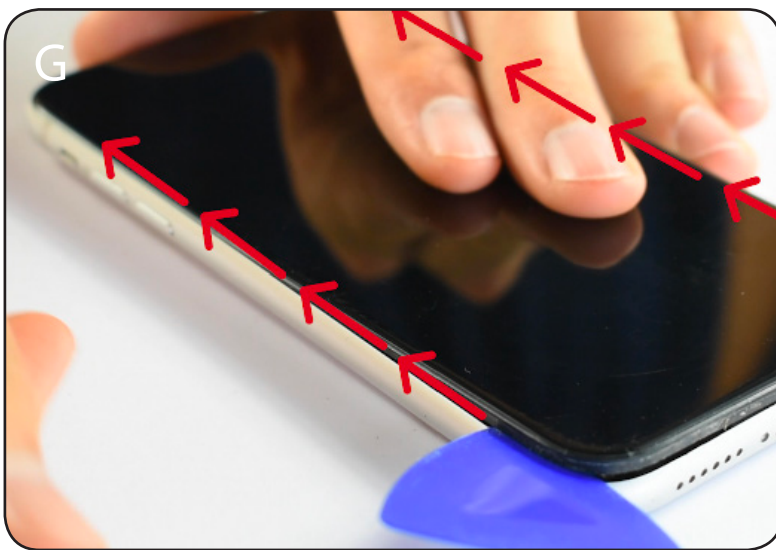
D & E) The tip of the METAL PRY TOOL should insert 2-3mm. Next, lift the corner of the screen from the frame by swinging the METAL PRY TOOL to a 180 degree angle

Take note of how deep our METAL PRY TOOL is and try to replicate





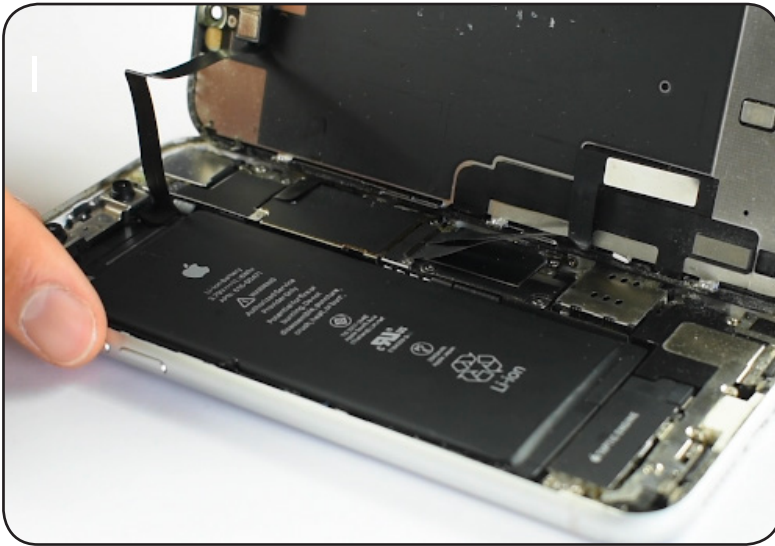
F) Insert the PICK right beside the METAL PRY TOOL. You may need to apply some downward pressure to the METAL PRY TOOL to widen the gap



G) Slide the PICK up either side of the phone to break the adhesive holding the screen down

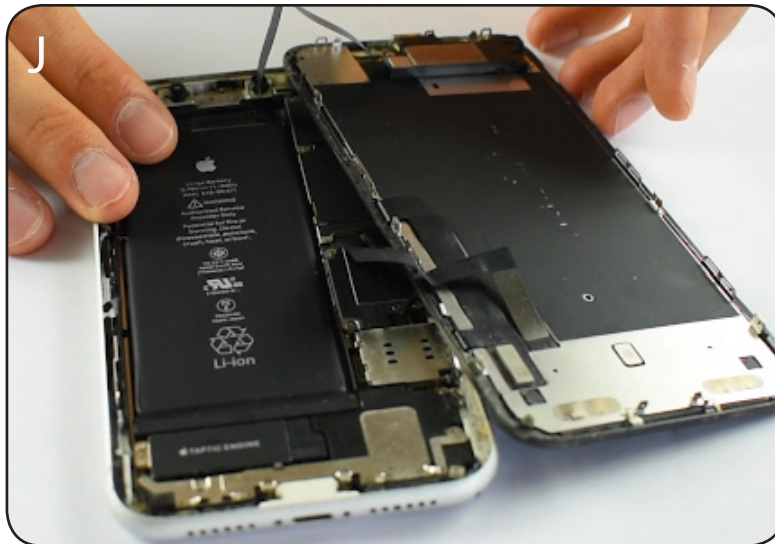


H) Follow the PICK along one of the unadhered edges to the top of the screen, releasing the adhesive and clips.



I) The screen of your iPhone opens like a book to the right. Be careful not to put too much strain on the cables located on the right side while opening the screen.

Warning: Ensure to slightly lift the screen away from the housing before beginning to swing the screen open, this is because there are clips down the right hand side that could potentially get caught.

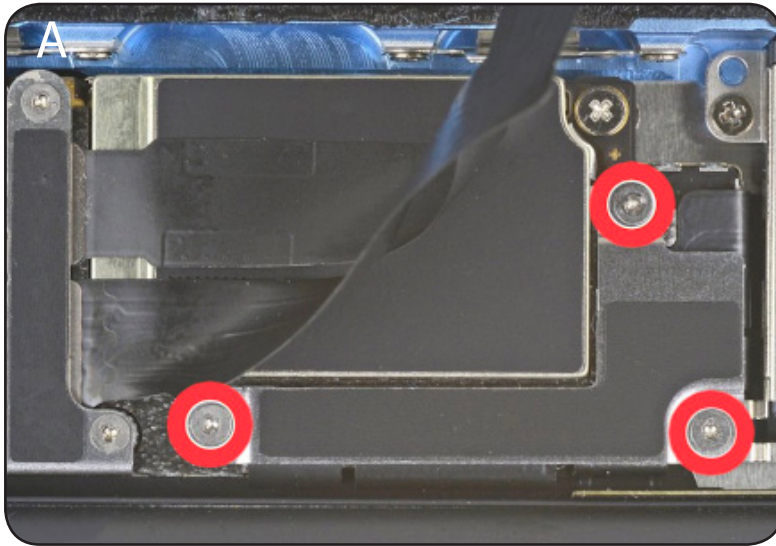


J) Once the screen is open, lay it down beside the frame

Note: while performing this step ensure to push the screen in at the same time as laying it down. This will ensure there is no strain or damage caused to the cables or connectors.

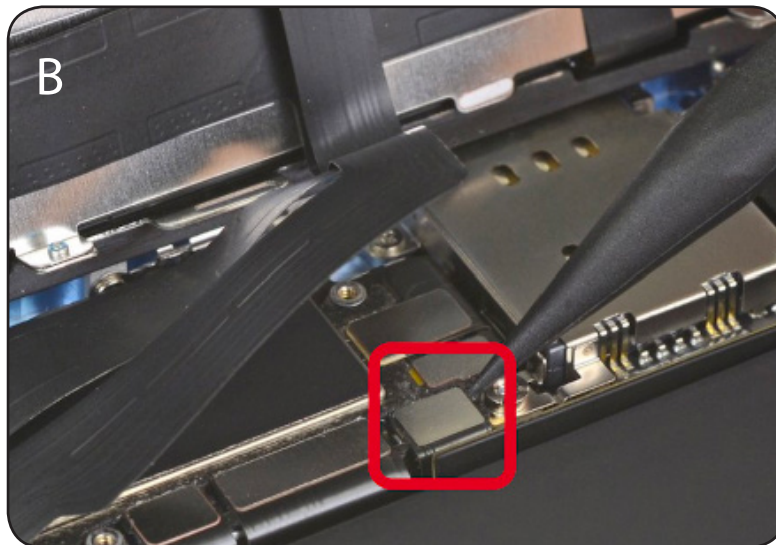
2. Remove Shield Plate & Disconnect Battery

Tools: TRI POINT | PHILLIPS | PLASTIC PRY TOOL



A) Using the gold TRI POINT screwdriver, remove the three screws holding down the metal plate covering the battery connector.

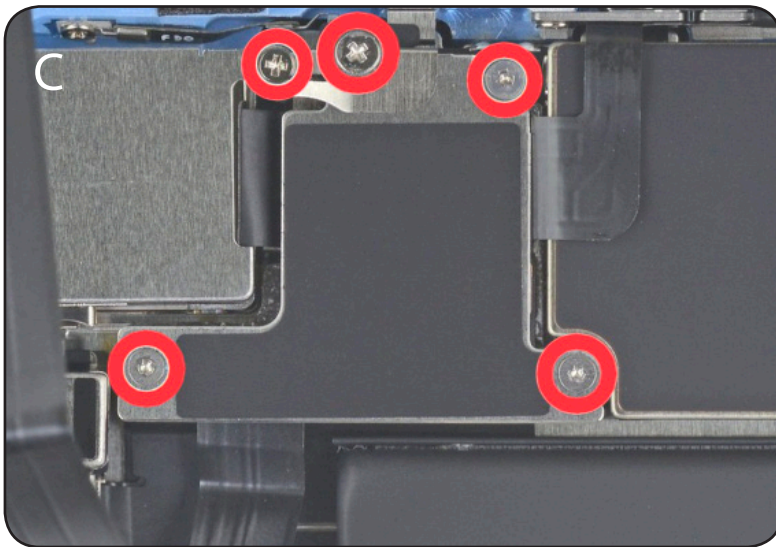
Apply adequate pressure and rotate anti-clockwise.



B) Using the flat end of the PRY TOOL, unclip battery connector cable from its socket.

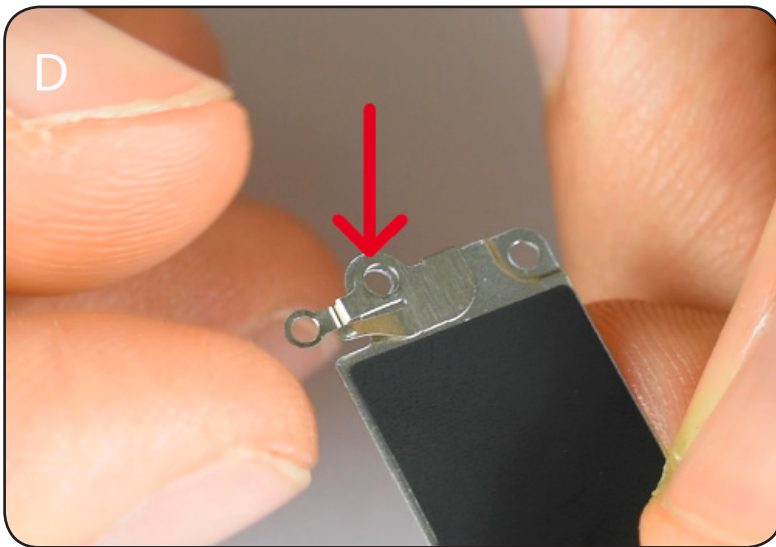
Place edge of PRY TOOL just under the connector and slowly rotate anti-clockwise to disconnect.

Note: Leave the battery plug seated upright, away from the socket to ensure there will be no power flowing through the device

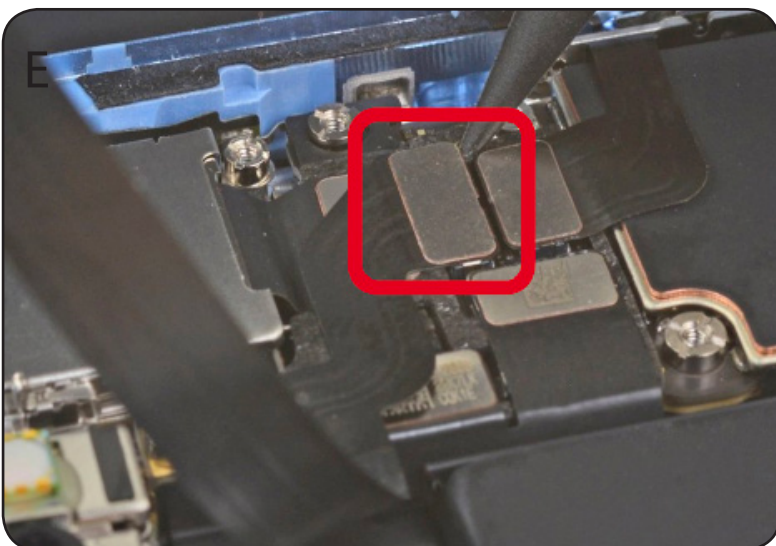


A) Using the gold TRI POINT screwdriver and silver PHILLIPS screwdriver, remove the five screws holding down the metal plate covering the earpiece and front camera cables.

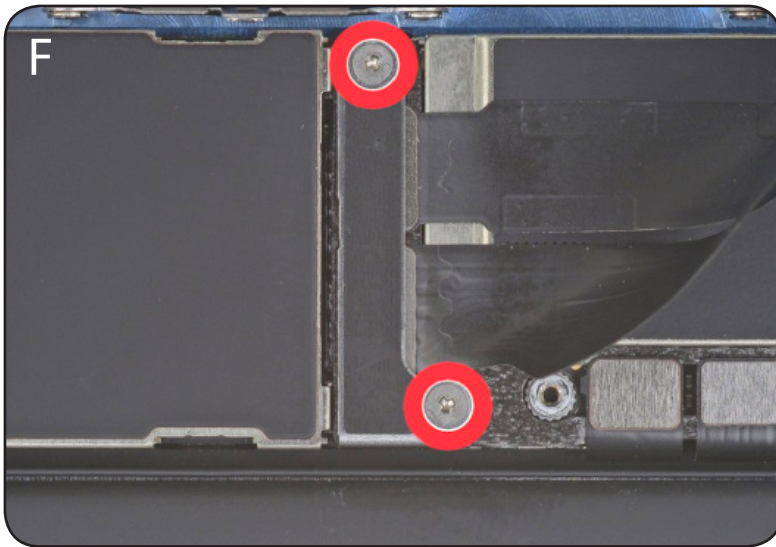
Apply adequate pressure and rotate anti-clockwise.



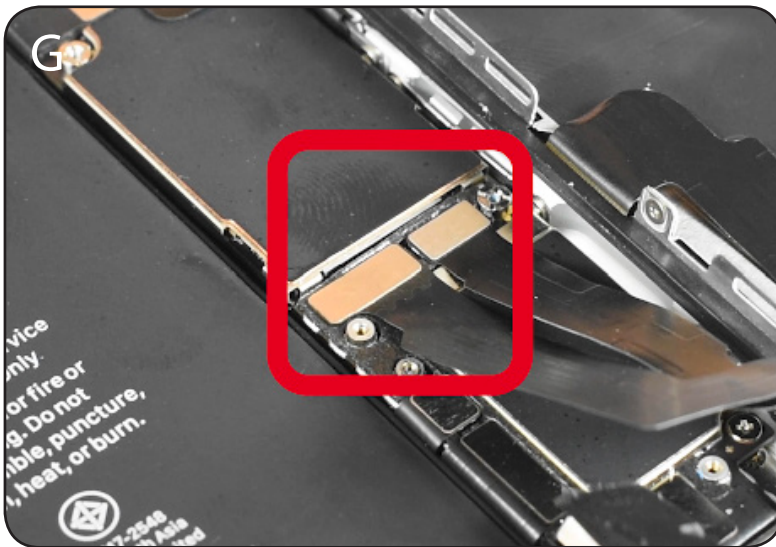
B) If this small clip happens to fall off during this step then simply slide it back on using this picture as a guide.



C) Using the flat end of the PRY TOOL, disconnect the Ear-piece cable.



D) Using the gold TRI POINT screwdriver remove the two screws securing this bracket over the two screen cables.



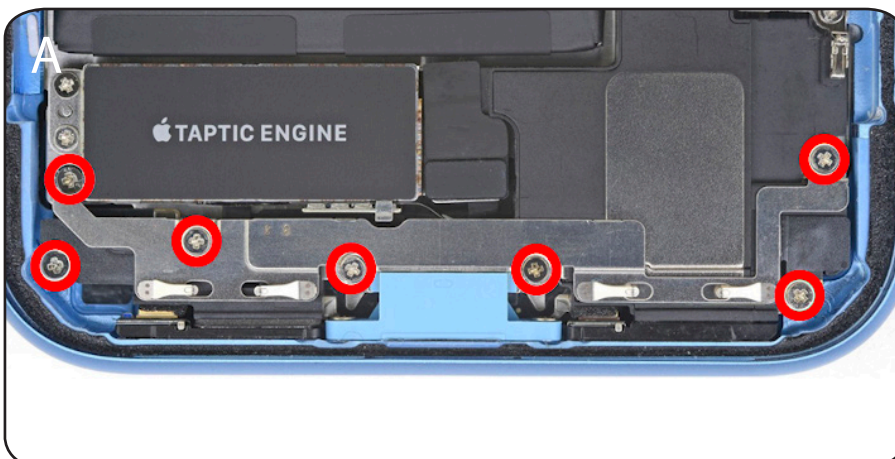
E) Using the flat end of the PRY TOOL, disconnect the two screen cables and Front Camera cable from their sockets.

WARNING: Never unclip the screen connectors before disabling the battery connector first (Step 5 above).

If there is still live power running through the phone when unplugging the screen, the backlight (which allows you to see picture on the screen) could potentially blow.

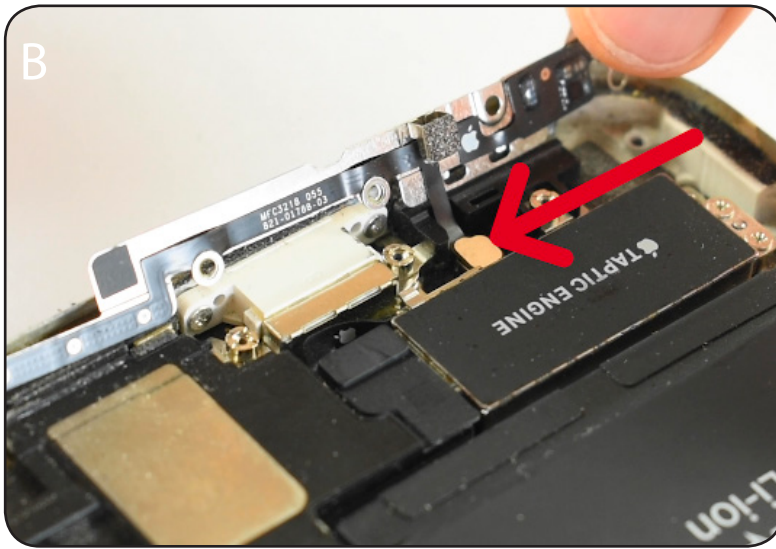
3. Remove Taptic Engine and Loudspeaker

Tools: PHILLIPS | FLAT HEAD | TWEEZERS | PLASTIC PRY TOOL

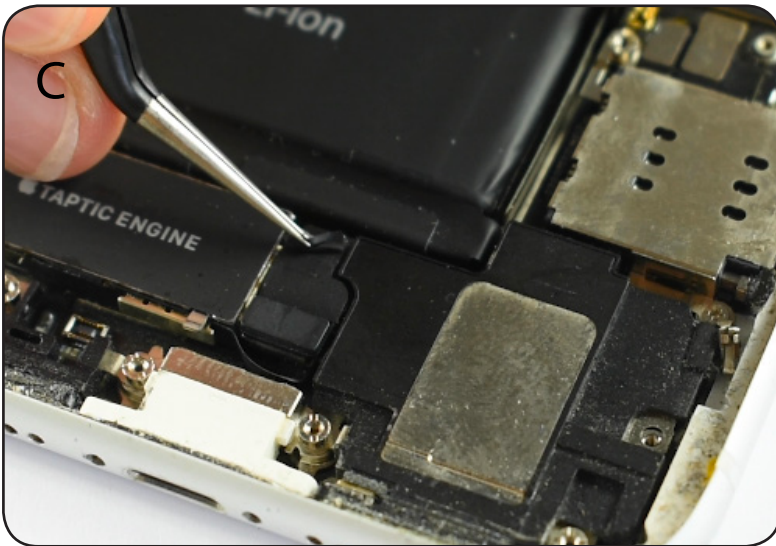


A) Remove seven screws securing this bracket.

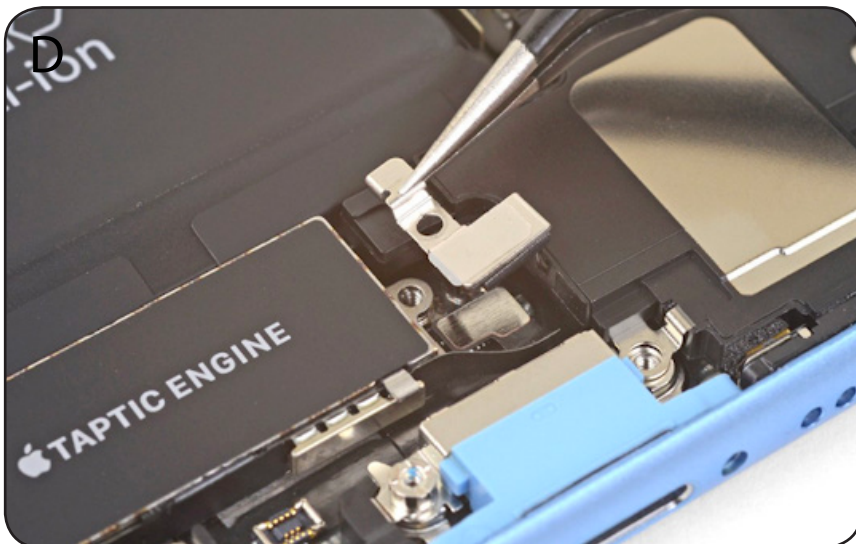
WARNING: Read the next step before attempting to remove this bracket from the device.



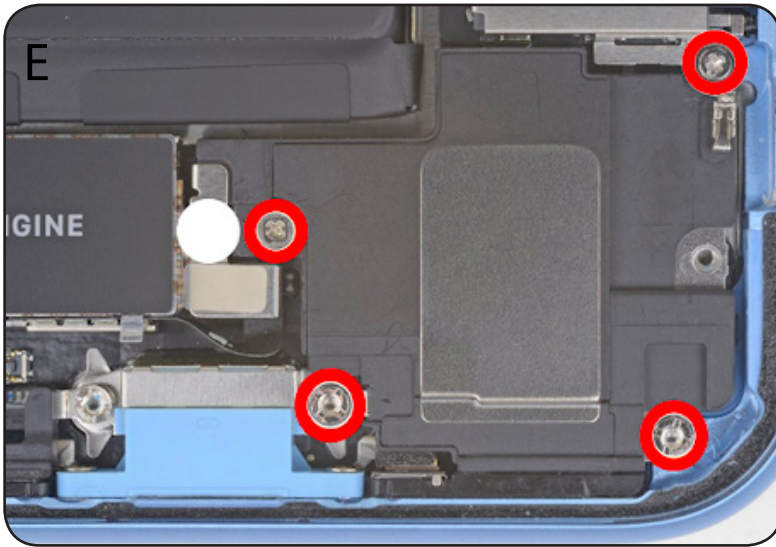
B) Using your PLASTIC PRY TOOL unclip this small cable on the under side of the bracket.



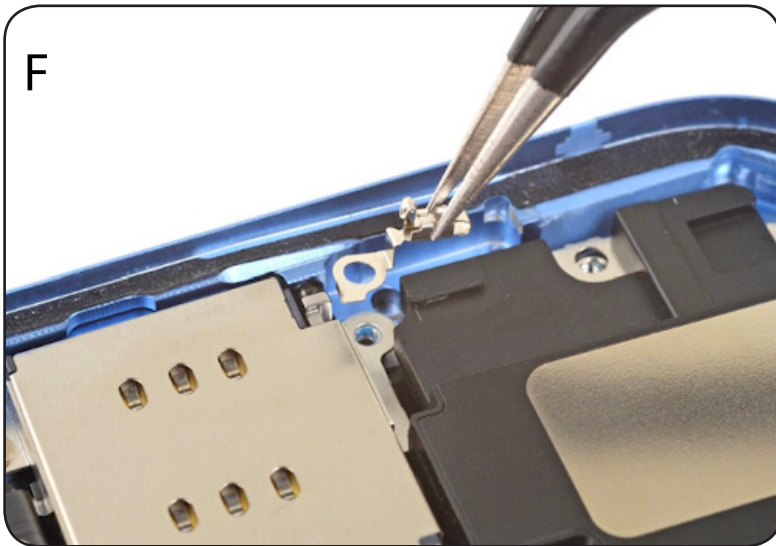
C) Using your TWEEZERS remove this bit of black tape covering a hidden screw.



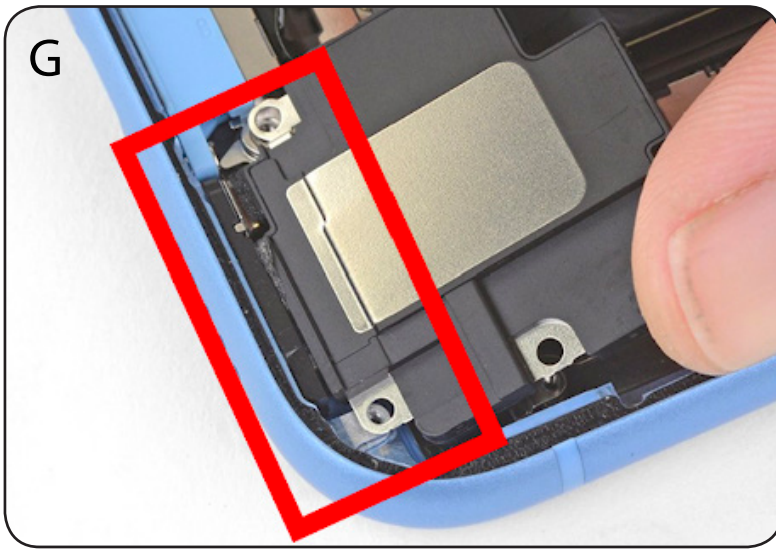
D) Using you PHILLIPS screw-drivers Remove the single screw holding this small bracket in, then remove this small bracket.



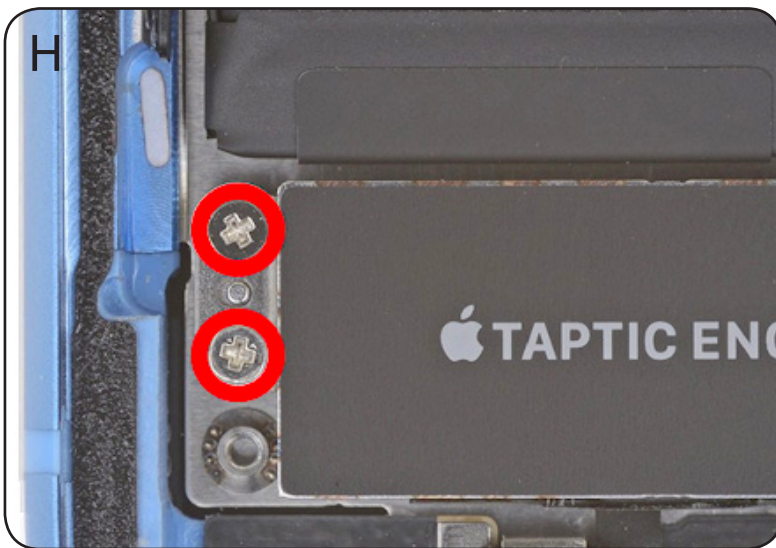
E) Using your PHILLIPS screwdriver and FLAT HEAD screwdriver, remove the four screws from the speaker.



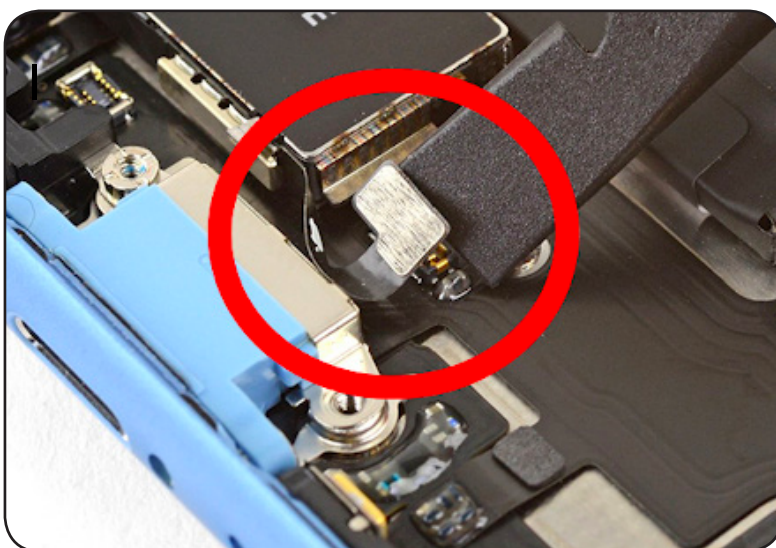
F) Then remove the small bracket underneath top right screw.



G) Use some force to brake the speaker from the adhesive holding it to the device frame.



H) Remove the two PHILLIPS screws from the Taptic Engine



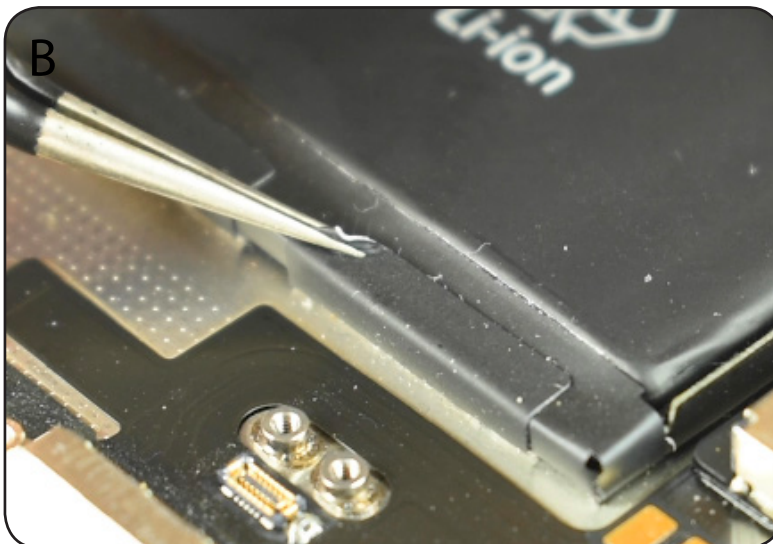
I) Using the flat end of the PLASTIC PRY TOOL, unclip the TAPTIC ENGINE cable from the connector and remove the entire TAPTIC ENGINE from the device.

4. Remove battery from your device

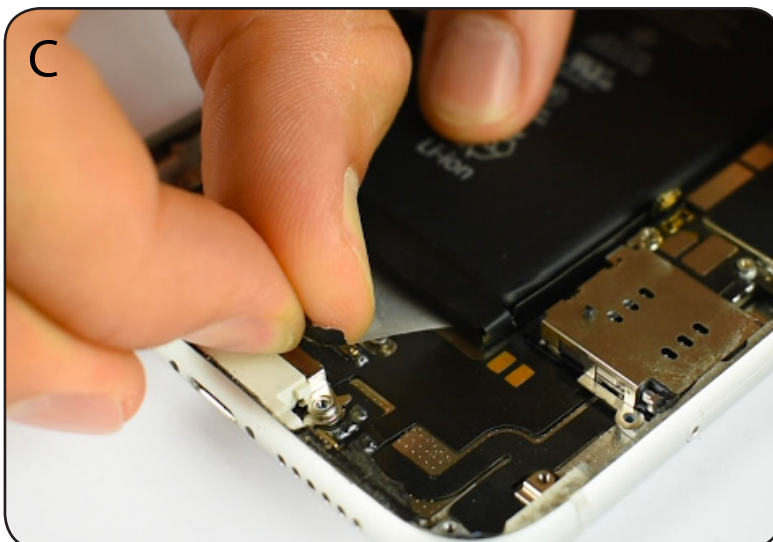
Tools: TWEEZERS



A) Remove the four adhesive tabs holding the battery in place.

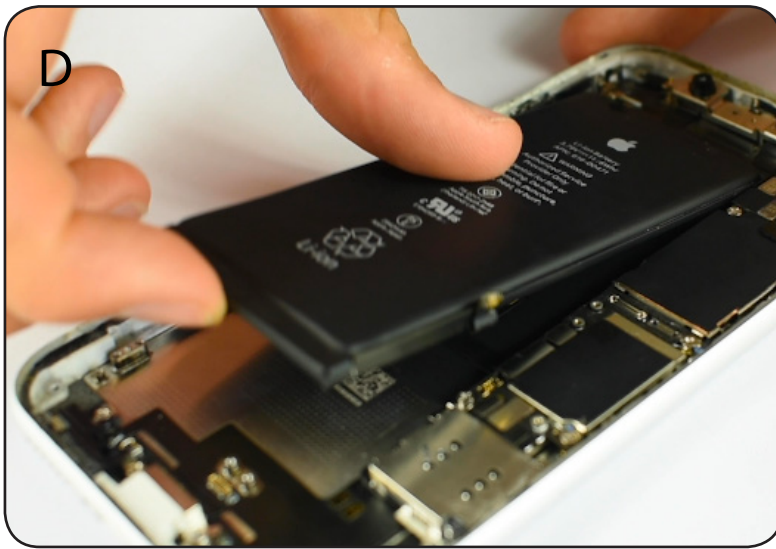


B) Using your TWEEZERS, peel back the first Battery adhesive tab from the bottom left/right edge of the battery



C) Slowly pull the adhesive tab away from the Battery, toward the bottom of the phone. Repeat this step for the next three tabs.

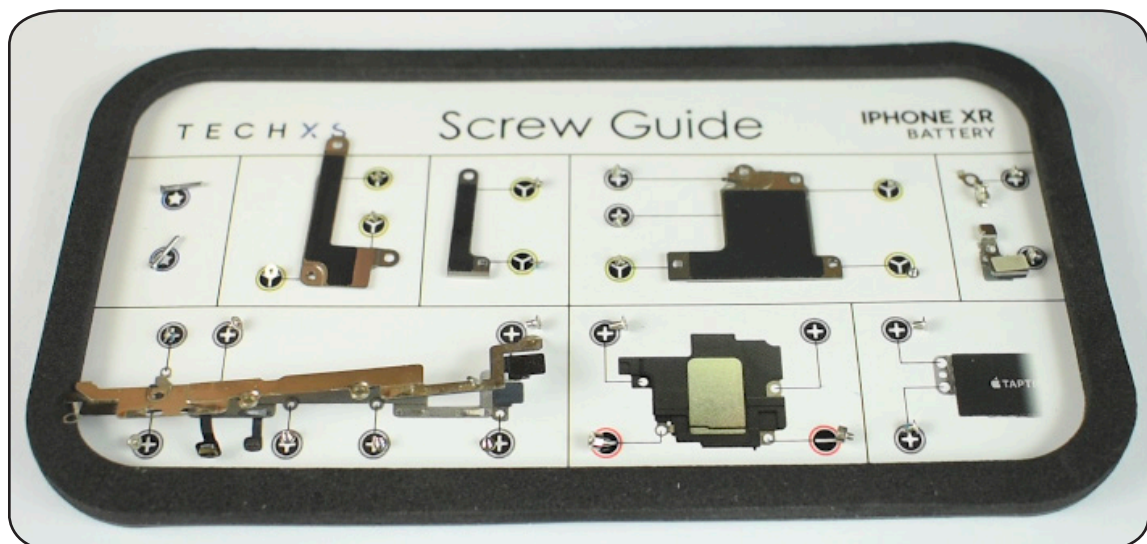
Note: to avoid tearing the adhesive tab, pull slowly and gently at an angle as horizontal to the work bench as possible. Ensure to keep fingers close to the Battery when pulling the tab. If the tab is stretched too



D) Remove the Battery from your device.

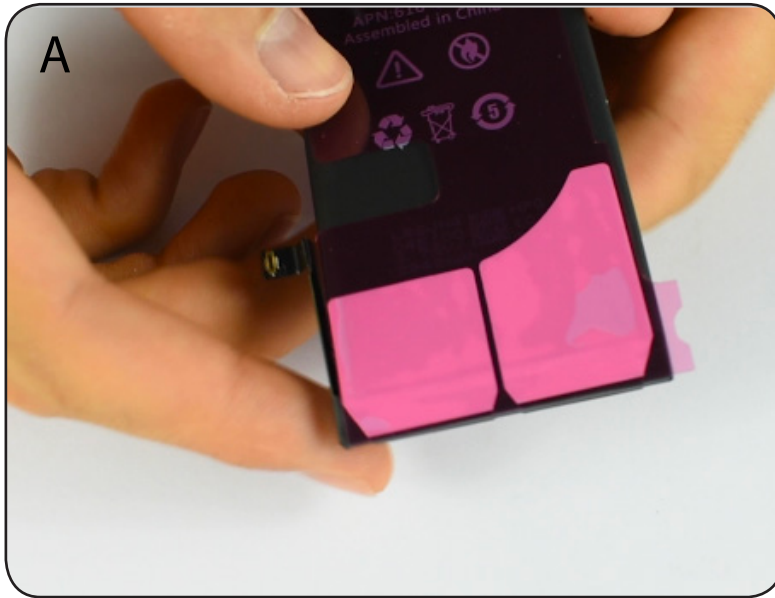
HALFWAY POINT

SCREW GUIDE CHECK



5. Install the new battery

Tools: NONE



A) Remove the pink film from the back of the new battery.



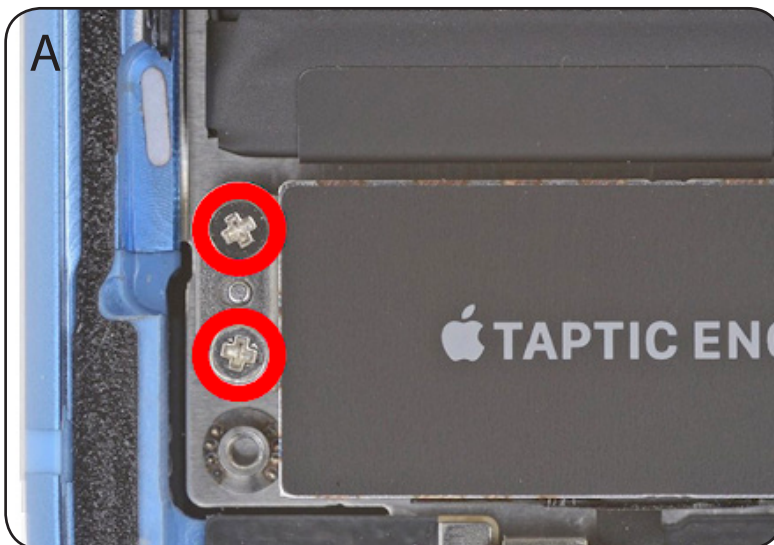
B) Insert the new battery into your device. Try to align the new battery with its corresponding connector.



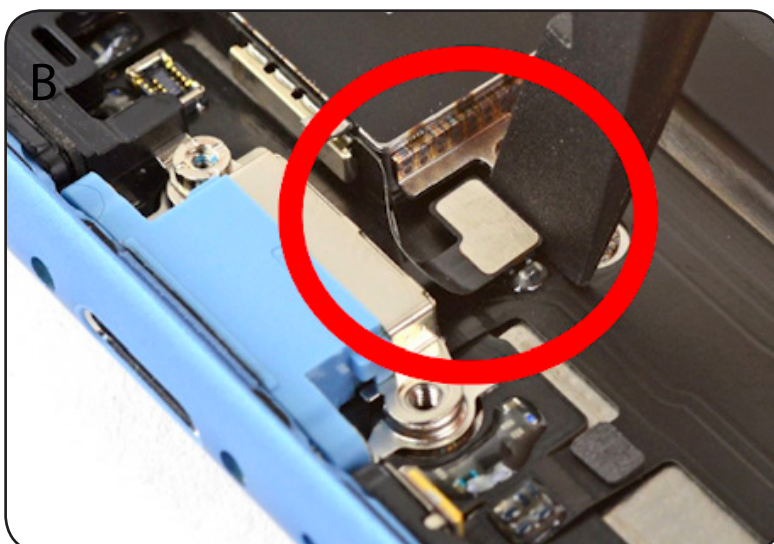
C) Add some pressure around the battery to secure the new adhesive to the device.

6. Re-apply the Taptic Engine and Loudspeaker

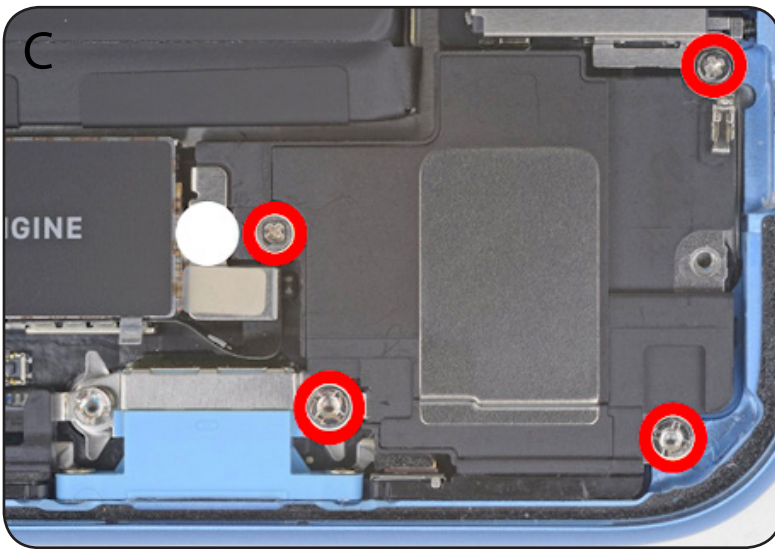
Tools: PHILLIPS | FLATHEAD | TWEEZERS



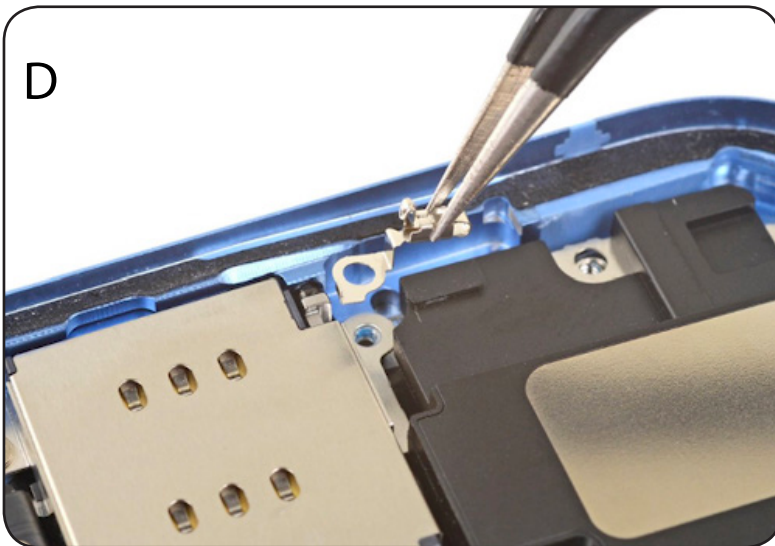
A) Re-apply the Taptic Engine and secure the two screws using your PHILLIPS head screwdriver.



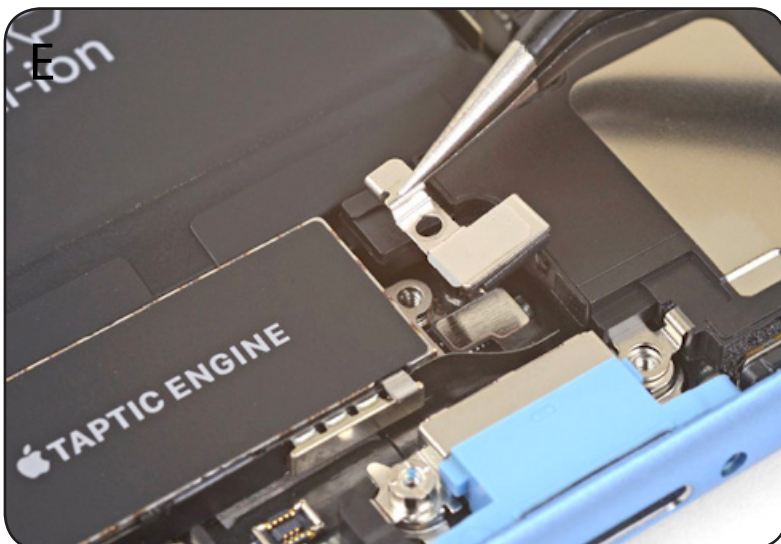
B) Plug the Taptic Engine cable in using either your PLASTIC PRY TOOL or finger.



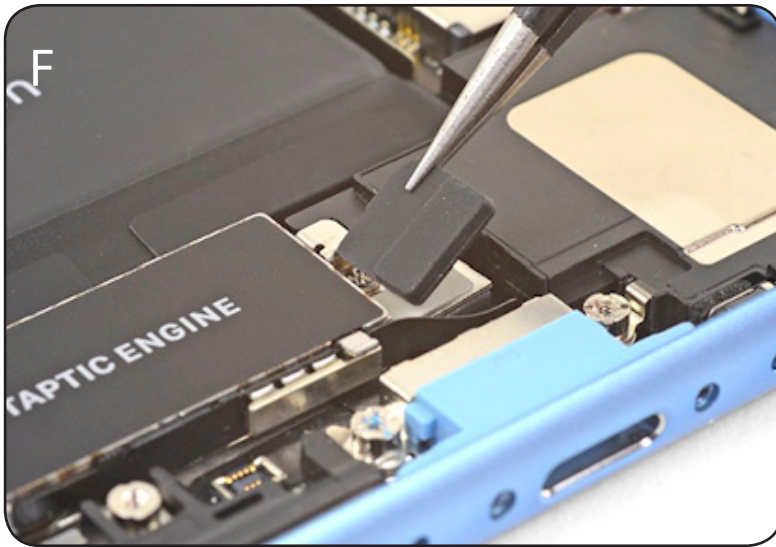
C) Re-apply the speaker and four screws to secure it.



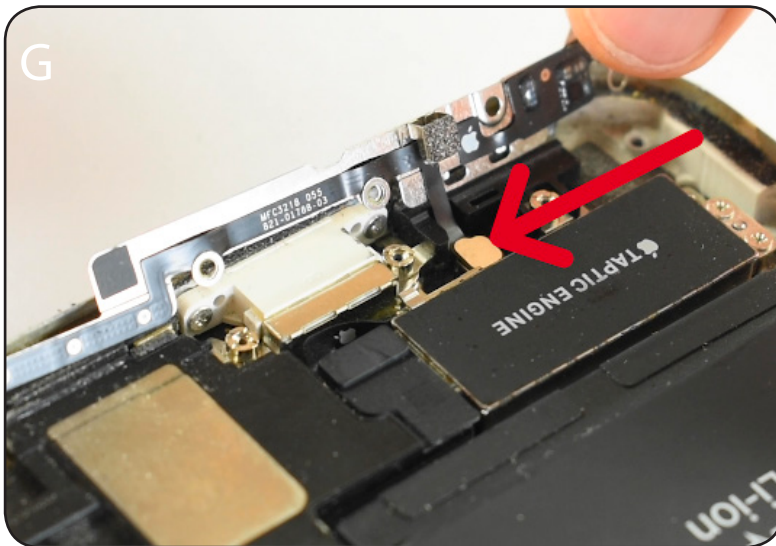
D) Re-apply this small clip before screwing this screw in.



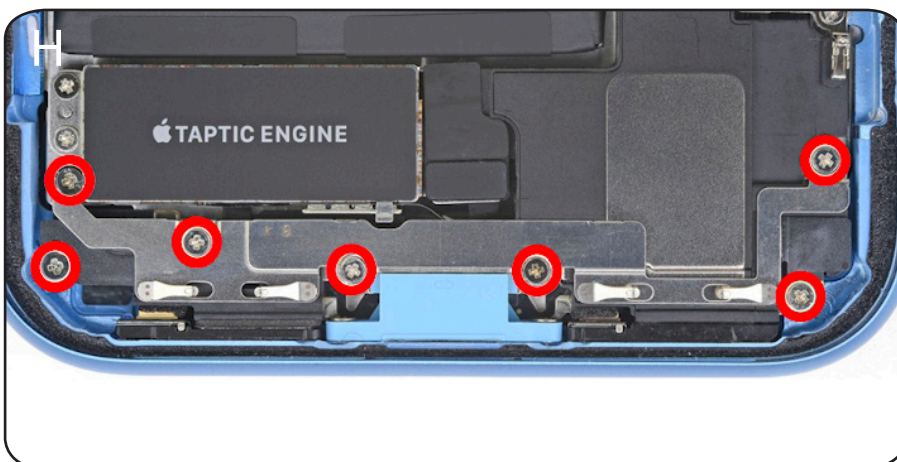
E) Re-apply this clip and the screw to secure it.



F) Re-apply this black tape to cover the clip.



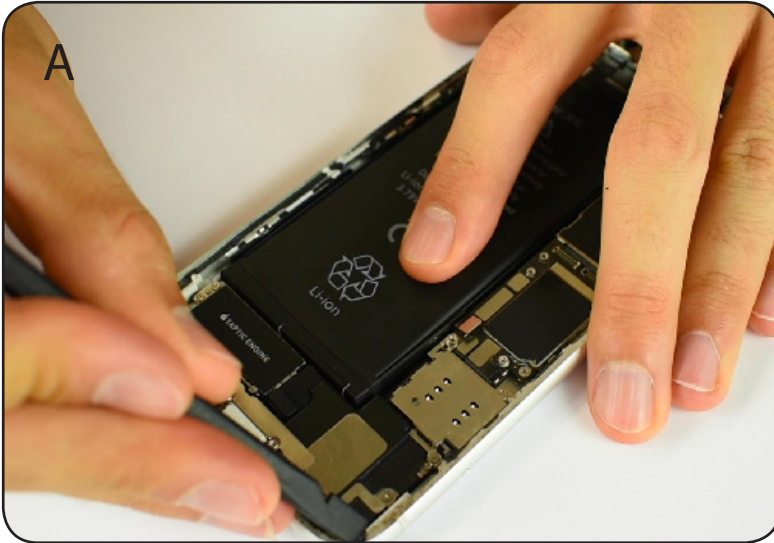
G) Plug this small cable back in on the under side of the bracket.



H) Re-apply seven screws to secure the bracket.

7. Clean frame of phone from excess adhesive

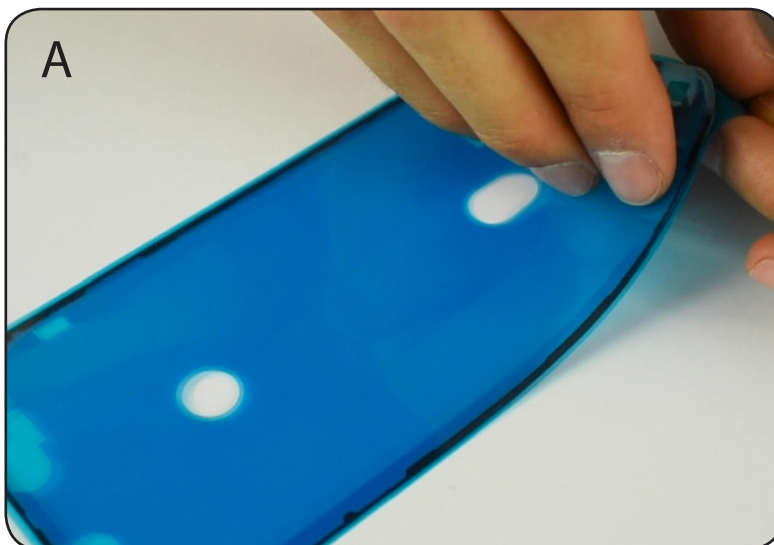
Tool: PLASTIC PRY TOOL



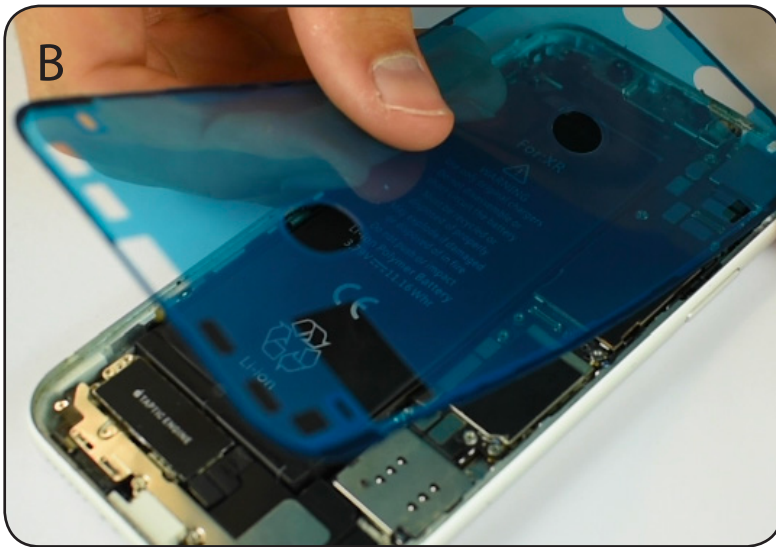
A) Using the PLASTIC PRY TOOL remove as much excess adhesive cleaning the frame of your phone prior to placing the new adhesive down.

8. Lay new adhesive on frame

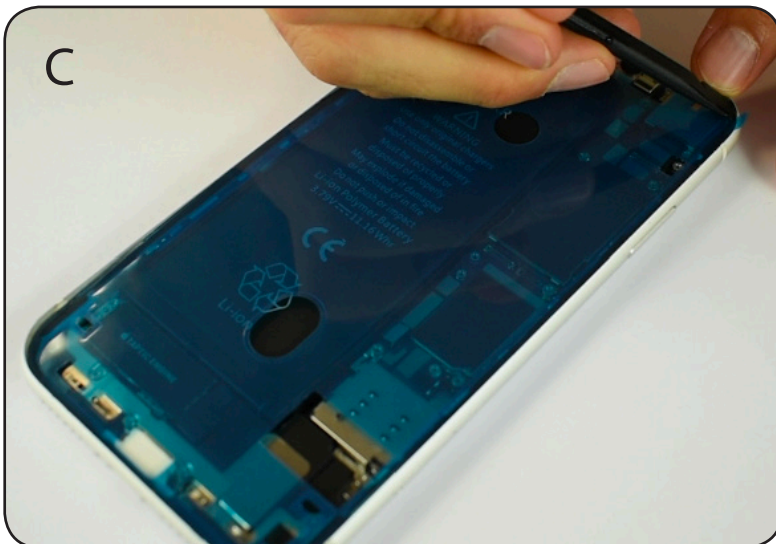
Tool: PLASTIC PRY TOOL



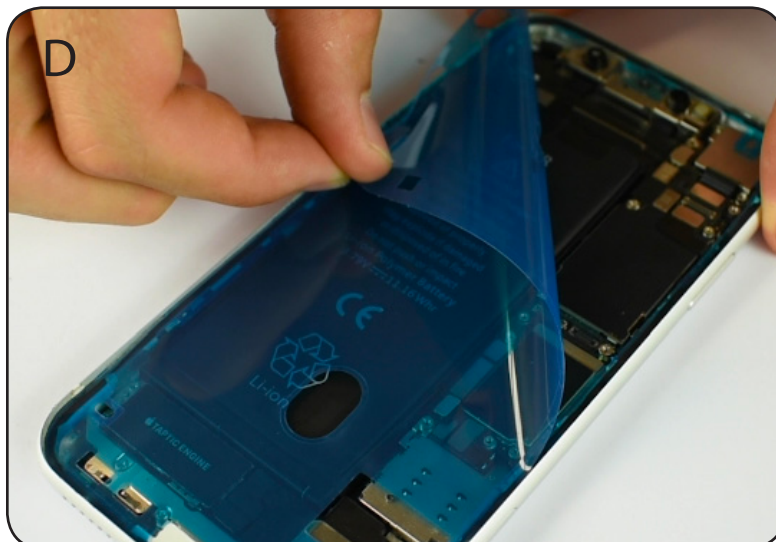
A) Prepare the adhesive seal ready to apply to your device.



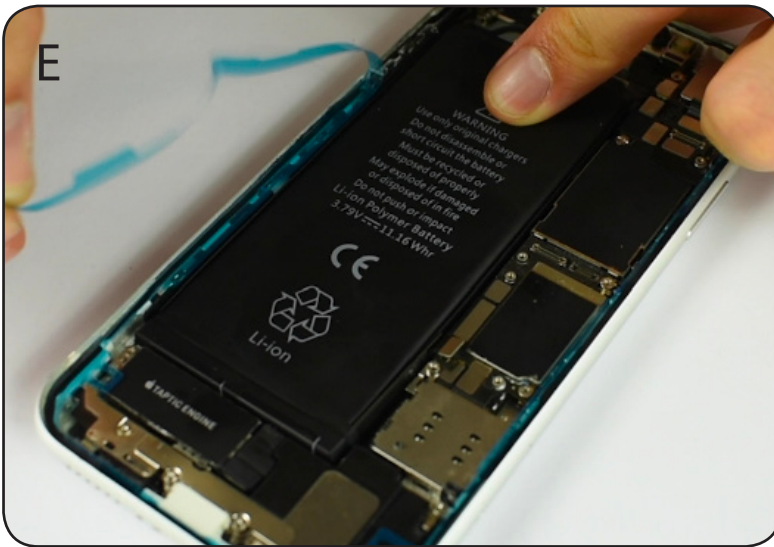
B) Slowly and carefully apply the new adhesive to your frame, ensuring it lines up throughout the frame.



C) Using your PLASTIC PRY TOOL, trace around the edge of the adhesive ensuring it sticks to the frame.



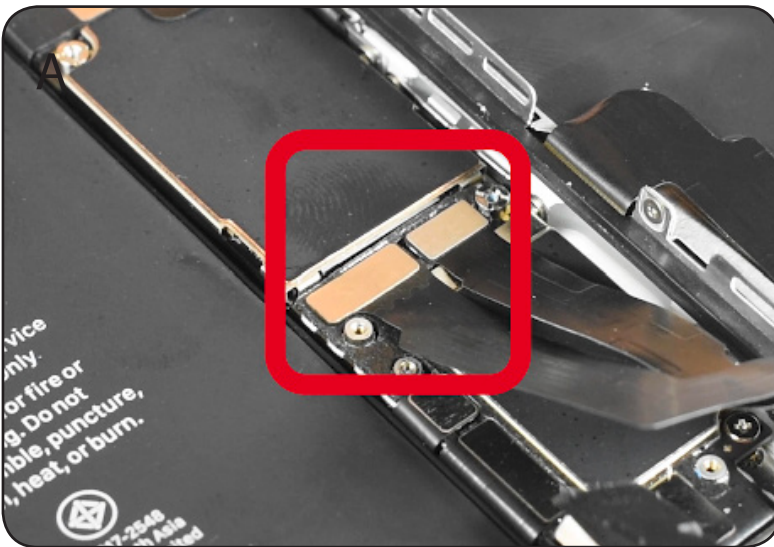
D) Remove the next layer of seal from the adhesive.



E) Remove the last layer of seal exposing the adhesive. Be careful not to allow the adhesive to move from its position. Use your PLASTIC PRY TOOL to re-stick the adhesive to the frame if it happens to move.

9. Re-apply your screen

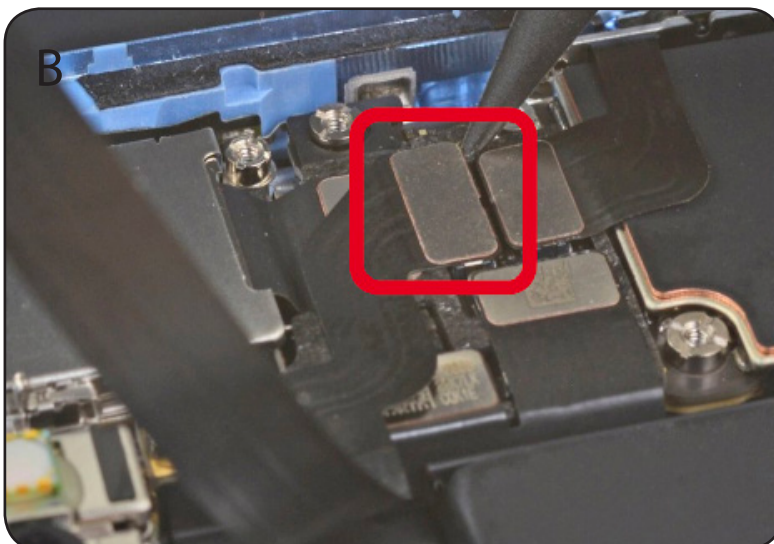
Tool: TRI POINT | PHILLIPS



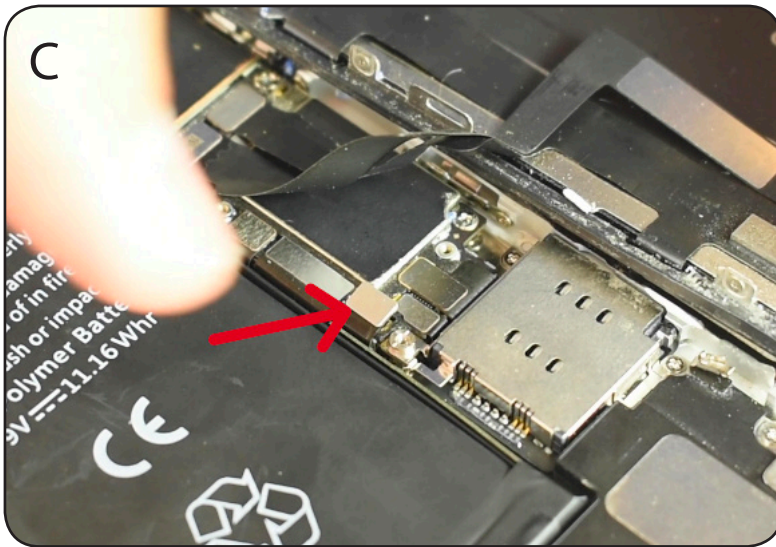
A) Using the flat end of the PRY TOOL, disconnect the two screen cables and Front Camera cable from their sockets.

WARNING: Never unclip the screen connectors before disabling the battery connector first (Step 5 above).

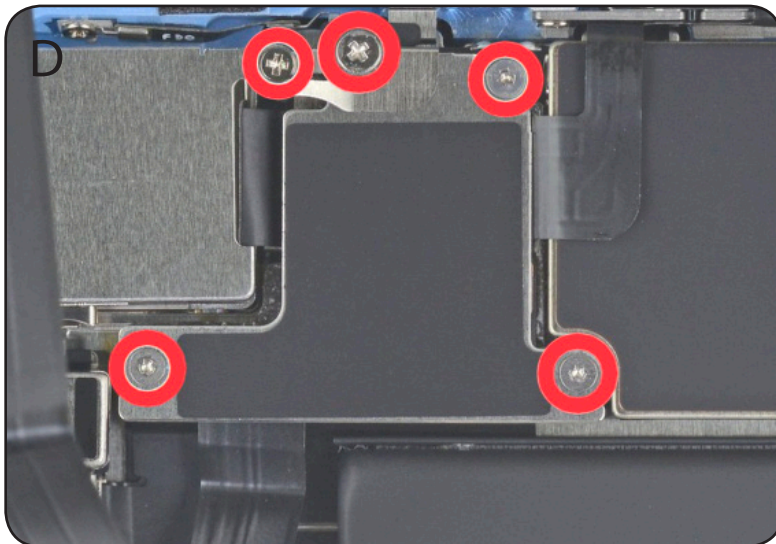
If there is still live power running through the phone when unplugging the screen, the backlight (which allows you to see picture on the screen) could potentially blow.



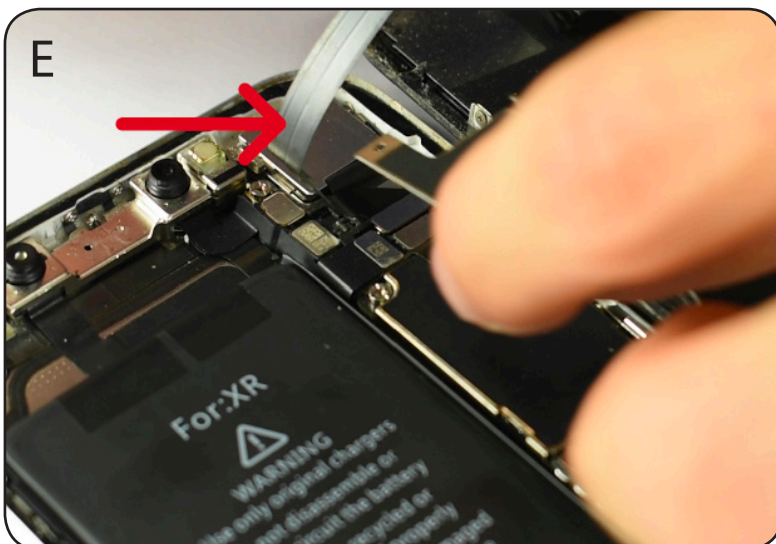
B) Using the flat end of the PRY TOOL, disconnect the Ear-piece cable.



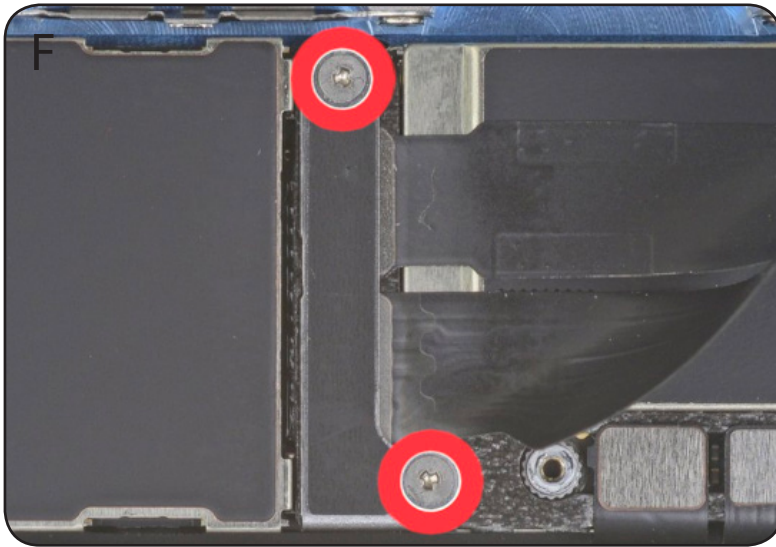
C) Re-connect the battery cable.



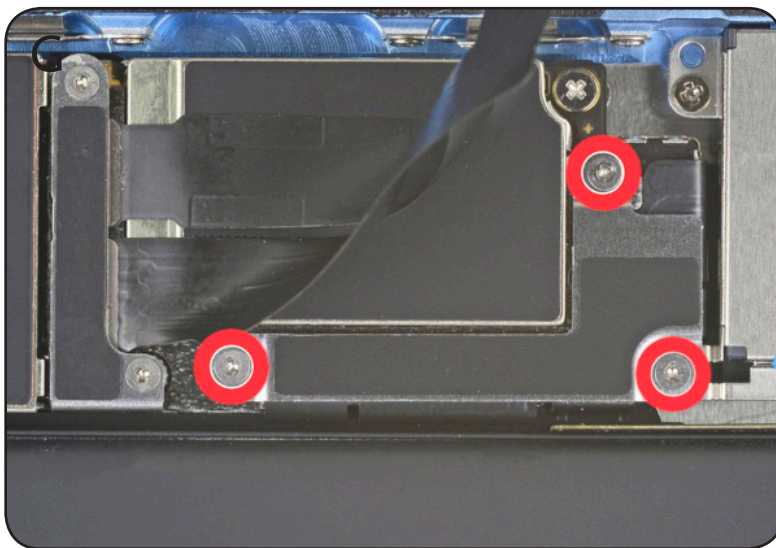
D) Re-apply this bracket and the five screws to secure it.



E) Ensure the shield plate sits above the Earpiece cable



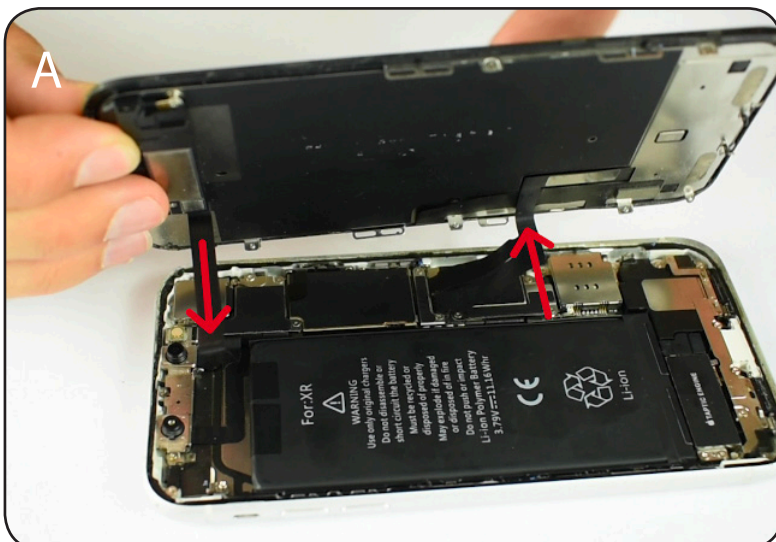
F) Re-apply this bracket and the two screws to secure it.



G) Re-apply this bracket and the three screws to secure it.

10. Clip Screen Into Housing & Screw Pentaloques

Tools: PENTALOBE



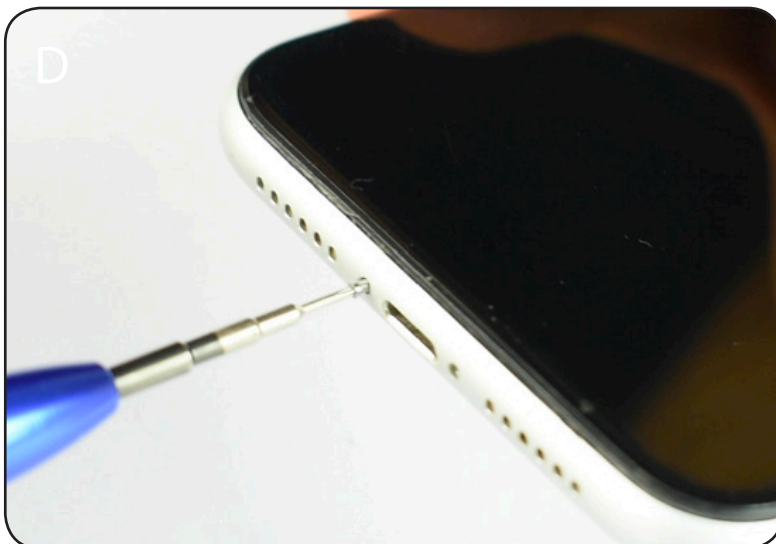
A) Close the screen. Ensure the cable are all folding in the directions of the arrows.



B) Hook the top of the screen into the top of the frame.



C) Gently clip both sides of the screen into the frame.



D) Re-apply the two Pentalobe screws to secure the screen.

THE END

Kits are also available for:

- iPhone 6 Screen & Battery Replacement
- iPhone 6 Plus Screen & Battery Replacement
- iPhone 6s Screen & Battery Replacement
- iPhone 6s Plus Screen & Battery Replacement
- iPhone 7 Screen & Battery Replacement
- iPhone 7 Plus Screen & Battery Replacement
- iPhone 8 Screen & Battery Replacement
- iPhone 8 Plus Screen & Battery Replacement
- iPhone X Screen & Battery Replacement
- iPhone XS Screen & Battery Replacement
- iPhone XR Screen Replacement
- iPhone XS Max Screen & Battery Replacement

Connect with us online! We would love to hear how your repair went

