

IPHONE 7 PLUS

SCREEN REPLACEMENT GUIDE

TECHXS

Welcome to TechXS' written iPhone screen repair guide!

This guide has been prepared in reference to the tools and parts purchased in TechXS' DIY iPhone 7 Plus screen replacement kit, and may not apply to a repair conducted without these tools and parts.

Rest-assured, while completing this repair you are following the steps and procedures prepared by experienced Repair Technicians with expertise in training and instructing beginners through the repair process.

Read/watch our guides carefully and you will feel confident in conducting this repair on your own, time and time again. Sit down, get comfortable and let's get started!

Backup your device

Repairing a smartphone brings the risk of potentially damaged key components that may lead to data loss. Before repairing, we advise that you securely back up your device.

To find out how to backup your iPhone, visit www.techxs.com.au/backup-device

Important Tips

Take your time

We estimate the time to complete this repair to be 20-30 minutes, on average. We advise that you don't rush through the steps, as most mistakes are made when adequate care is not taken.

Be gentle

Remember, the hardware you are handling is delicate, and should be treated as such.

Lighting

Make sure you can clearly see the small components you are working on. Conducting the repair in a well-lit room, preferably with a lot of natural light is advised. A side lamp next to your work space may also be suitable.



BEFORE YOU BEGIN

It is recommended you watch the video version of this repair guide online. Visit our Youtube channel to find your device and relevant video guide:

www.youtube.com/techxs_au

TOOLS CHECKLIST

Check to ensure you received all of the following tools in your TechXS Repair Kit.
Each tool plays a role in helping to complete this repair!



#Y000
Pentalobe Screwdriver
(PENTALOBE)

This is the blue driver.



#PH001
Phillips Head Screwdriver
(PHILLIPS)

This is the silver driver.



#Y0.8
Tri Point Screwdriver
(TRI POINT)

This is the gold driver.



Suction Cup
- Clear
(SUCTION CUP)

Used to help open device.



Plastic Screen Holder
- Black
(SCREEN HOLDER)

Black, rotatable stand.



Plastic Pry Tool
- Black
(PRY TOOL)

Long, black, plastic tool.



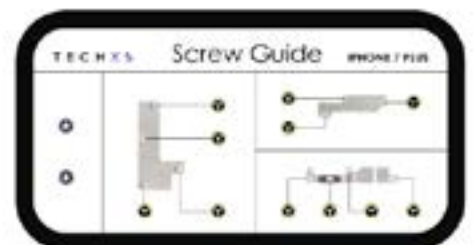
Plastic Triangle Pick
- Blue
(PICK)

Small, blue guitar pick.



Anti-Static Brush
- Black
(BRUSH)

Black brush for static control.



TechXS' Custom
Magnetic Screw Chart
(SCREW GUIDE)

To keep track of your loose
screws.

STEPS FOR COMPLETION

1.	Power Off Device Slide to power off 5
2.	Separate Screen from Aluminium Frame Remove Pentalobe screws 5 Apply Suction Cup 6 Use Pick to separate screen 6
3.	Apply Screen Holder (Optional) Apply screen holder to free up both hands 8
4.	Remove Shield Plates & Disconnect Battery Remove metal plate covering battery, screen & front camera connector 9 Disconnect battery connector 9
5.	Disconnect Screen & Front Camera cables Disconnect screen cables 10 Disconnect battery cable 10 Disconnect front camera cable 10
6.	Remove Home Button from Damaged Screen Remove metal plate covering the home button 12 Disconnect home button connector 12 Pry home button away from damaged screen 12
7.	Attach Home Button to new Screen Align and connect home button 15 Secure metal plate over home button 16
8.	Plug in new screen & Battery Brush screen connectors with Anti-Static Brush 17 Plug in screen, battery & front camera cables 17 Secure metal plate over front camera cable 18
9.	Re-apply the Shield Plate & remove Screen Holder Secure metal plate over battery & screen cables 19 Remove screen holder from the device 19
10.	Seat Screen back into Housing & re-apply Pentalobes Close the phone by clipping the new screen into the frame 20 Screw in Pentalobe screws 21

1. Power Off

Tools: NONE.



Hold the power/sleep button on the right side until the 'slide to power off' shows up on the screen. Slide the arrow from left to right.

Note: If it is not possible to power off your device, extra care must be taken to ensure step 4(B) is completed before the screen is disconnected.

2. Separate Screen from Aluminium Frame

Tools: PENTALOBE | SUCTION CUP | PICK



A) Using the [blue](#) PENTALOBE Screwdriver, remove the two Pentalobe screws located at the bottom of the device near the charging port.

Apply adequate pressure and rotate anticlockwise.



B) Apply the suction aid sticker to the damaged screen just above the home button.

Now press the SUCTION CUP onto the sticker as close to the home button as possible.



C) Carefully begin to pull the SUCTION CUP ring to create a gap at the bottom of the phone between the aluminium frame and the plastic bezel surrounding the screen.



D) Insert the PICK in the bottom of the device about 5mm in from the bottom left corner.

Slide the PICK along both sides of the screen, starting with the left side.

Twist slightly while sliding to release the clips holding the screen down.



B) Follow the PICK along one of the unadhered edges to the top of the screen, pushing the pick down with some force to release the adhesive and clips connected to the top



B) Swing the phone open like a book, to the right.

Warning: Ensure to slightly lift the screen away from the housing before beginning to swing the screen open, this is because there are clips down the right hand side that could potentially get caught.

3. Apply Screen Holder (Optional)

Tools: NONE



Open iPhone swinging home button end of front panel assembly away from rear case.

Insert larger, base section of the holder onto frame of phone. Adjust the angle of the holder, and insert the left side of the screen, so it can rest at 90 degrees.



Warning: Do not lift the screen passed 90 degrees as you can damage the display connectors of the phone.



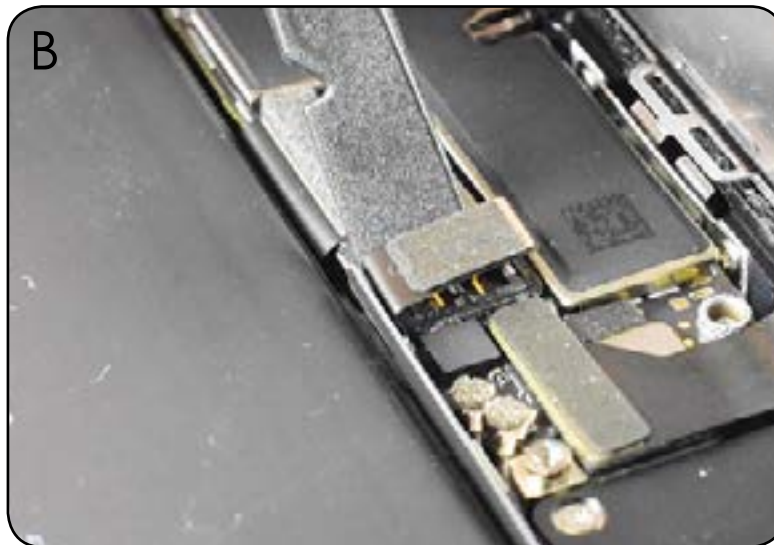
4. Remove Shield Plates & Disconnect Battery

Tools: TRI POINT | PRY TOOL



A) Using the **gold** TRI POINT screwdriver, remove the four screws holding down metal plate covering battery connector.

Apply adequate pressure and rotate anti-clockwise.



B) Using the flat end of the PRY TOOL, unclip battery connector cable from its socket.

Place edge of PRY TOOL just under the connector and slowly rotate anti-clockwise to disconnect.

Note: Leave the battery plug seated upright, away from the socket to ensure there will be no power flowing through the device.

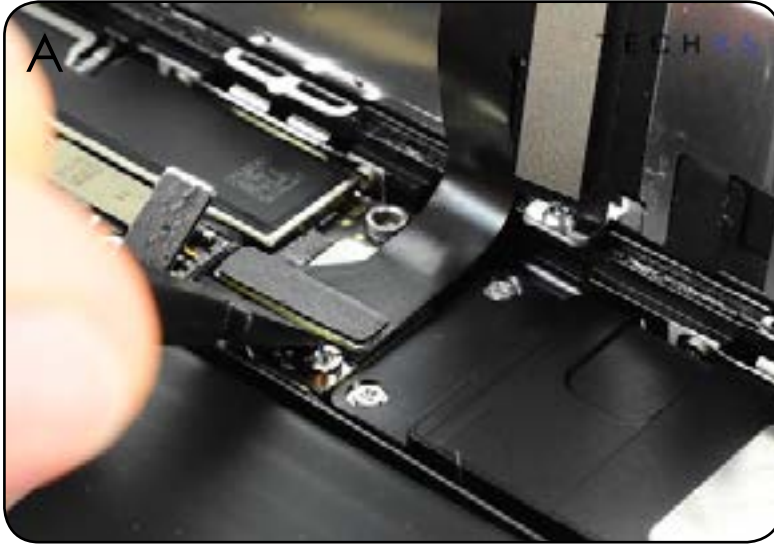


C) Using the **gold** TRI POINT screwdriver, remove the three screws holding down metal plate covering Front Camera connector.

Apply adequate pressure and rotate anti-clockwise.

5. Disconnect Screen & Front Camera Cables

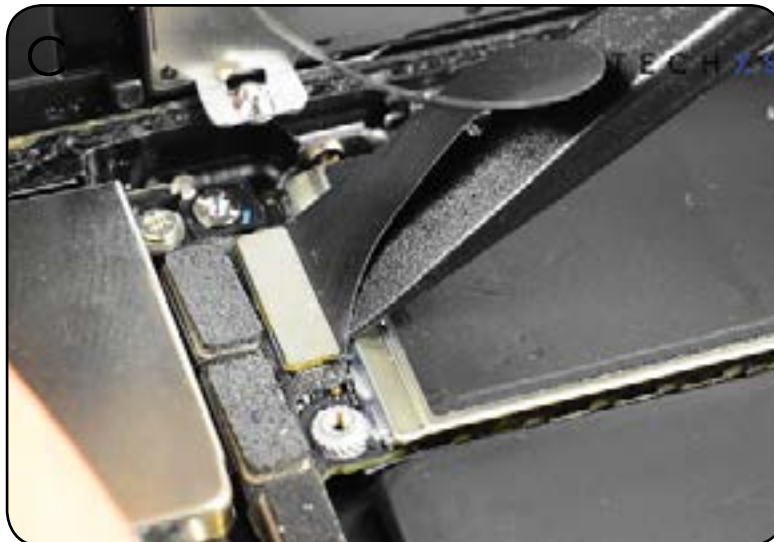
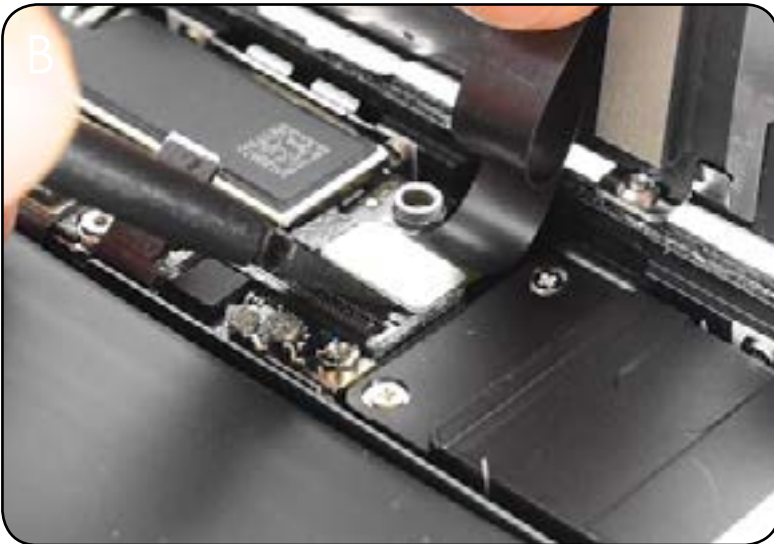
Tools: PRY TOOL



A) Using the flat end of the PRY TOOL, disconnect the two screen cables and Front Camera cable from their sockets.

WARNING: Never unclip the screen connectors before disabling the battery connector first (Step 5 above).

If there is still live power running through the phone when unplugging the screen, the backlight (which allows you to see picture on the screen) could potentially blow.



Warning

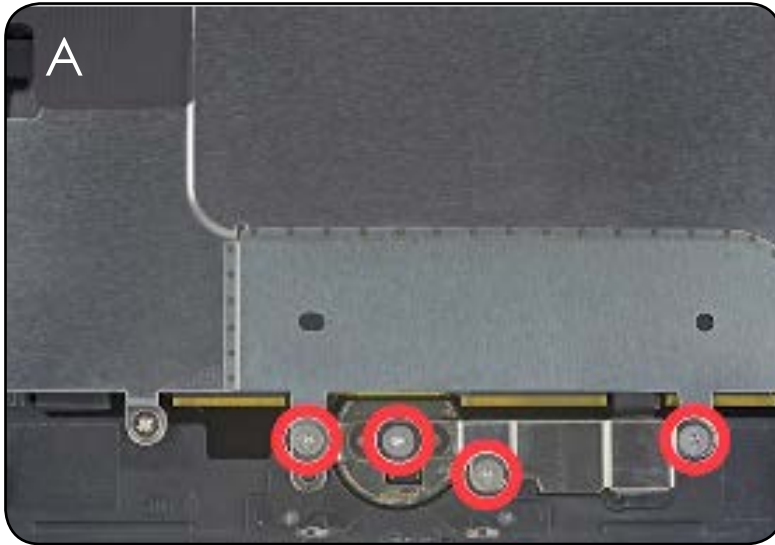
The iPhone 7 home button is fragile and adhered down well making it quite easy to tear/damage. Please ensure to watch this step all of the way through before performing. It is only advised to be attempted in the following way.



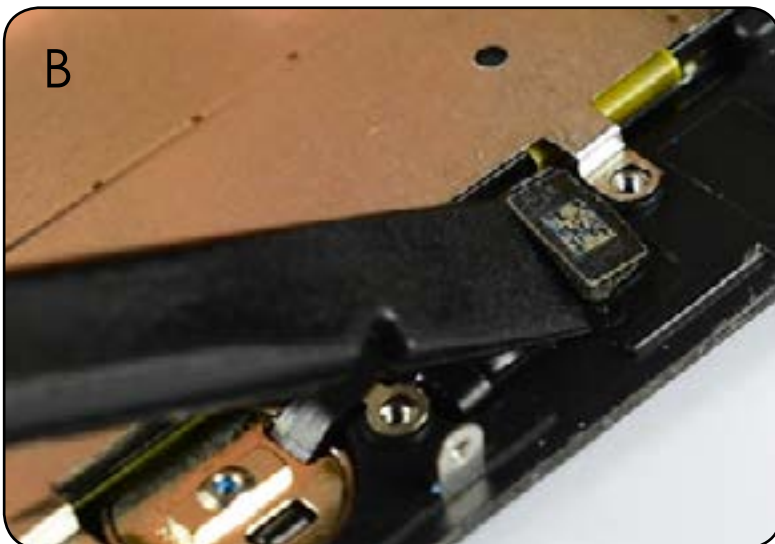
This is the Touch IC chip. It is important that it is not touched or disturbed in anyway during the transition from old screen to new. So ensure to keep fingers and tools away from this part of the home button.

6. Remove Home Button from Damaged Screen

Tools: TRI POINT | PRY TOOL

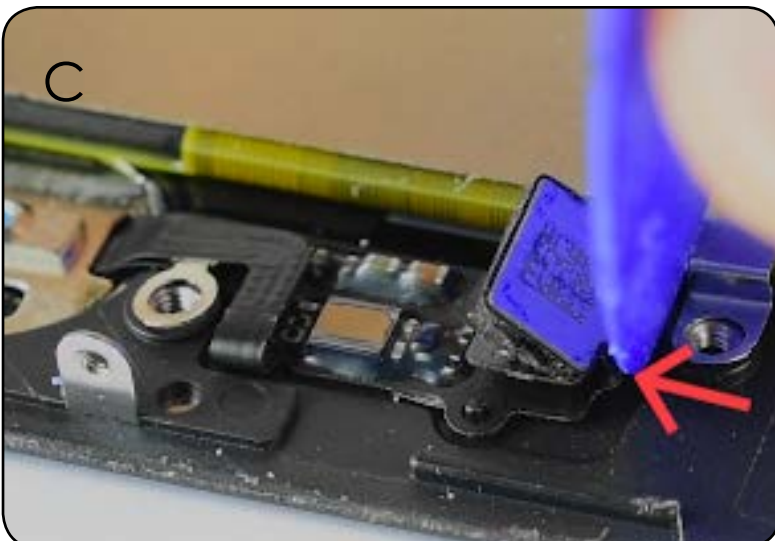


A) Using the **gold** TRI POINT screwdriver, remove the four screws holding down the metal plate covering the home button. Place the metal plate aside on the SCREW GUIDE.

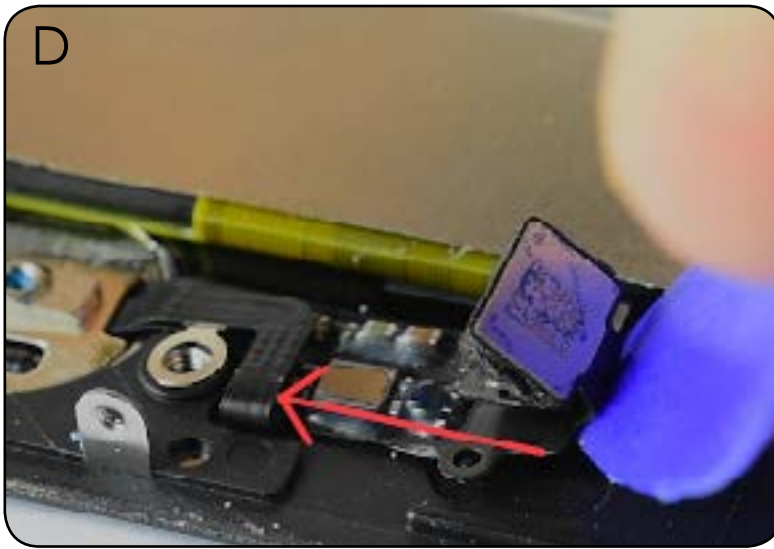


C) Using the Pry Tool, disconnect the Home Button connector from it's socket. Pry this connector up from the left hand side.

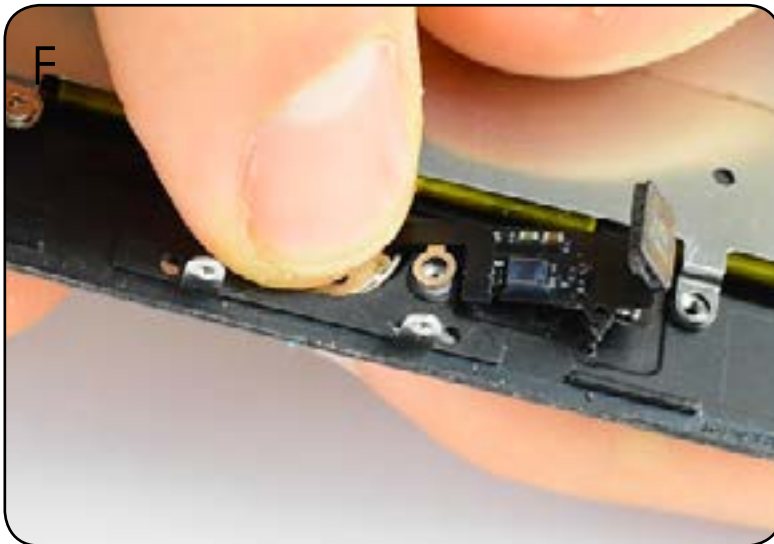
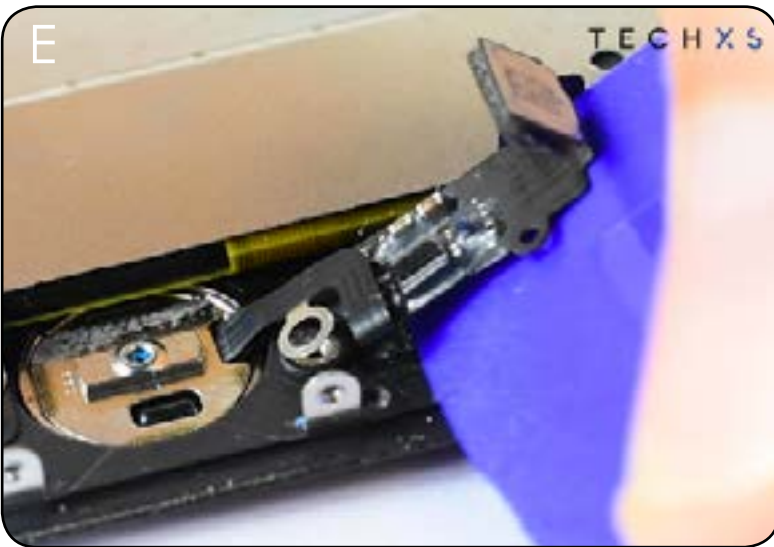
Note: Ensure to pry open BETWEEN the Home Button and Screen connector



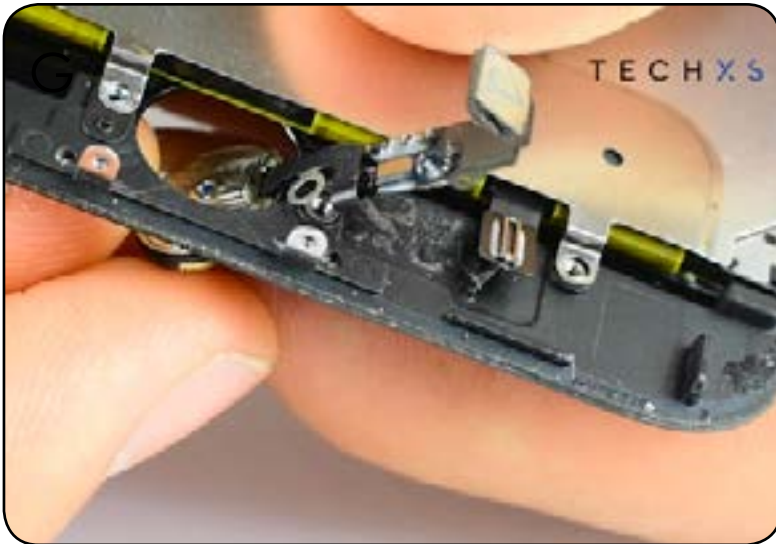
D) Using a corner of the pick, start directly behind the neck of the Home Button cable



Continue to slide the pick as parallel to the table as possible, trying to free the whole cable from the adhesive. Be gentle and take your time with this step.



E) Once unadhered, remove the Home Button through the front of the screen by pushing gently on the back side of the Home Button.



HALFWAY POINT

SCREW GUIDE CHECK

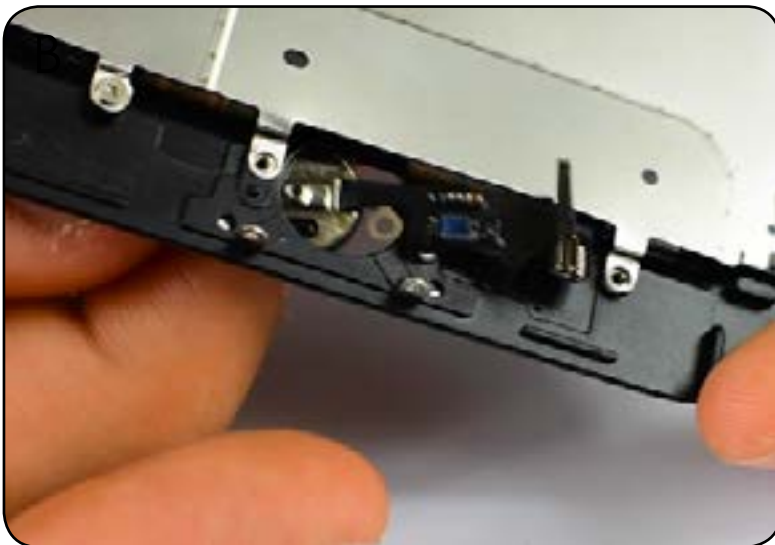


7. Attach home button to new screen

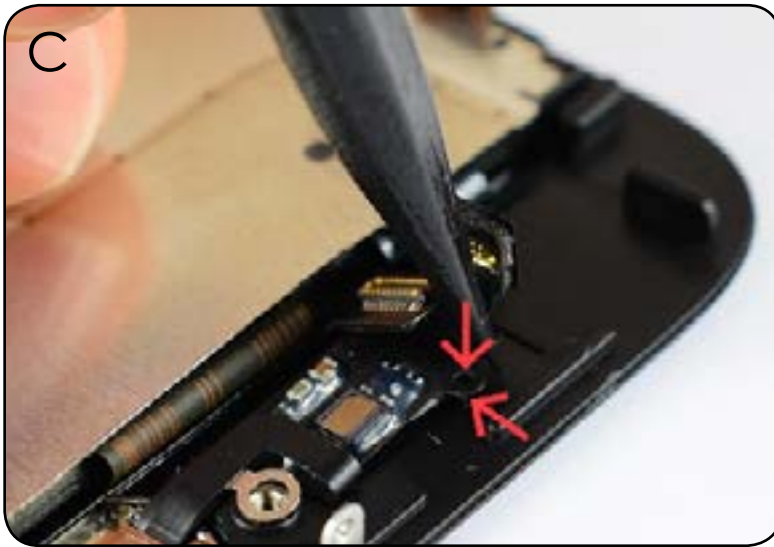
Tools: TRI POINT



Remove the film on the new replacement Screen.



A) Peel the Home Button connector back gently as you feed the Home Button through the front of the new screen.

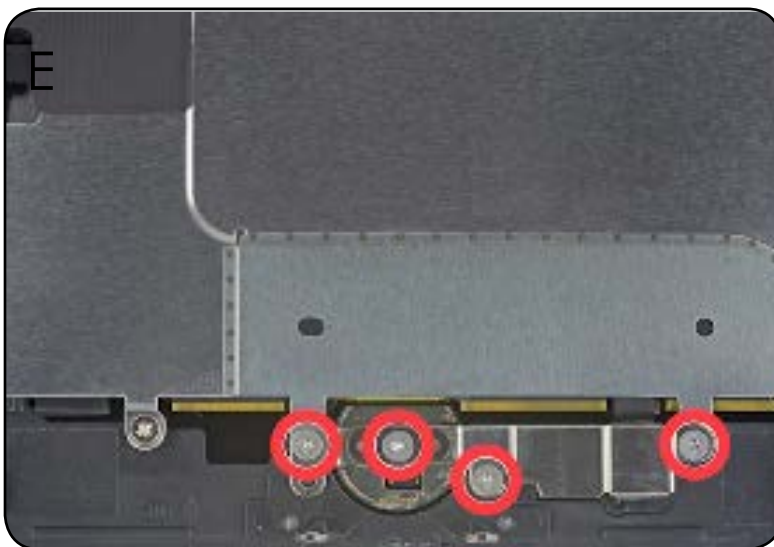


B) Line the small hole on the Home button with the small prong on the new replacement Screen.



C) Gently Re-connect the Home Button

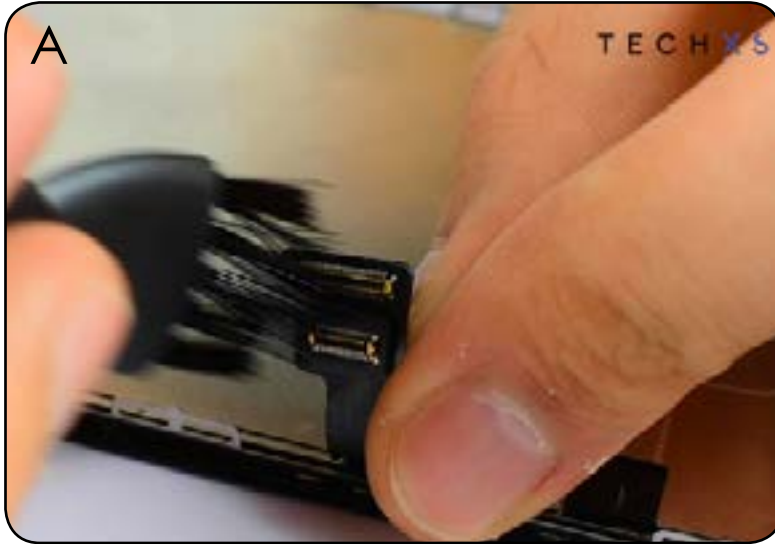
IMPORTANT: This is based on feel, gently move the connectors around until they feel aligned, then connect. Do not use excessive force.



D) Using the gold TRI POINT screwdriver, re-apply the four screws to secure the shield plate.

9. Plug in the new Screen & Battery

Tools: BRUSH | SCREEN HOLDER | PHILLIPS



A) Brush the screen cables and connectors with the BRUSH tool to help remove any static charge they may be holding.



B) Slide new screen back into the screen holder and align onto the rear aluminum frame. use the same technique in reverse when putting the screen back into the holder which was used when taking it out from the holder

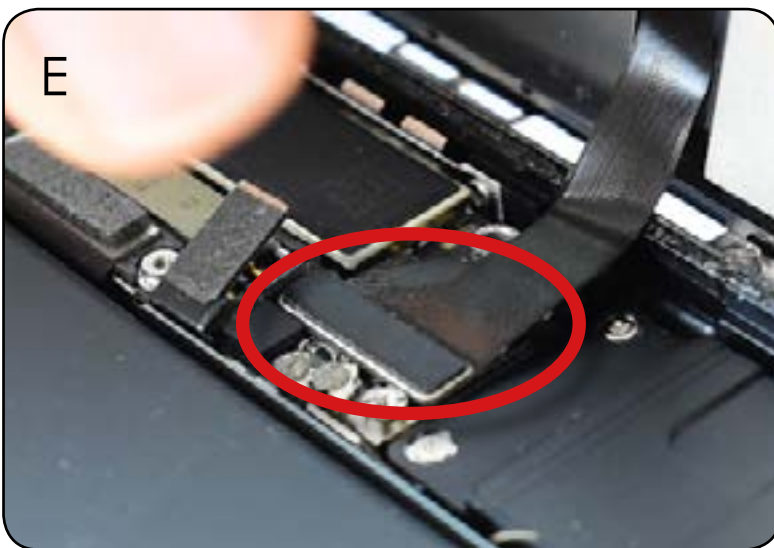


C) Plug the front camera cable back into it's respective socket.

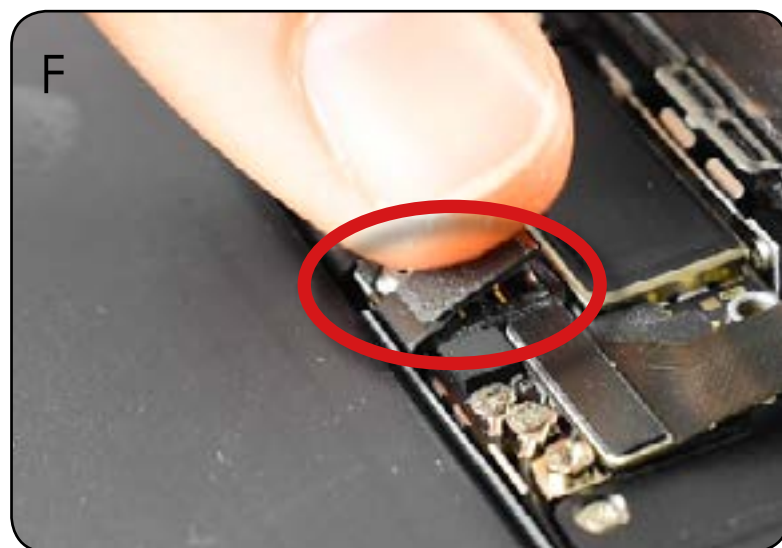


D) Using the **gold** TRI POINT screwdriver, secure metal bracket over the top of the cable with the three respective screws.

IMPORTANT: Do not lean the screen passed 90 degress as you may pull on the connectors, causing damage.



E) Using your finger, plug the screen and battery cables back into their sockets.



9. Re-apply Screen Shield Plate & remove Screen

Tools: TRI POINT



C) Secure metal bracket over the top of the connector, using the **gold** TRI POINT with the four respective Tri Point screws.



A) Remove the SCREEN HOLDER from the frame. To do this easily, tilt the holder towards the inside of the phone, while dragging away from the base.



10. Seat Screen back into Housing & re-apply Pen-

Tools: PENTALOBE | PRY TOOL



A) Seat the plastic clips at the top of the screen into the top of the base and continue to apply upward pressure so they do not lose alignment.

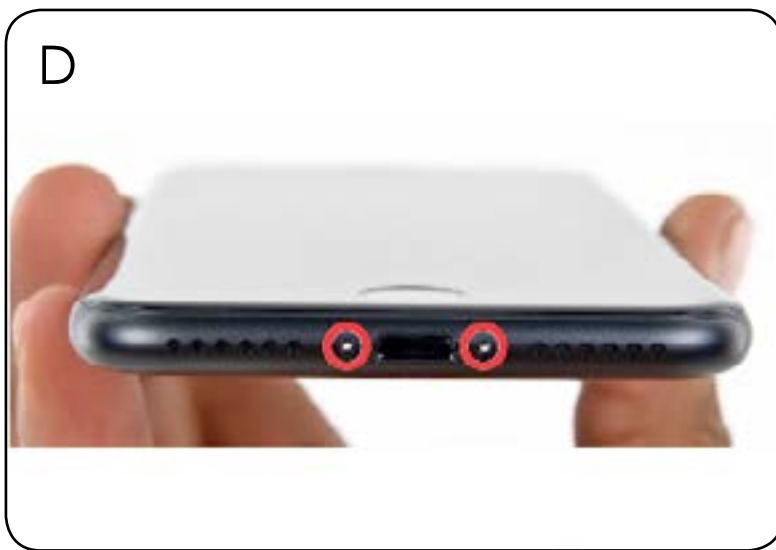
Note: If the screen is not sitting flush in aluminum housing this can mean two things:

1. There is something inside the phone stopping it from sitting neatly. Lift screen back up and have a look for anything that could be in the way.
2. The aluminium base may be dented or warped. In this case there is not much that can be done. Use pressure to seat the screen as neatly as possible around the damaged frame.



B) Clip screen back into rear housing by applying pressure down each side of the phone until you feel the screen clip in firmly.

Note: Ensure the screen cables do not get caught when seating screen into housing. To do this, use the PRY TOOL to push the cables in to place while com-



D) Using [blue](#) PENTALOBE screwdriver, screw two screws into the two holes at the bottom of your phone

THE END

Kits are also available for:

- iPhone 6 Screen & Battery Replacement
- iPhone 6 Plus Screen & Battery Replacement
- iPhone 6s Screen & Battery Replacement
- iPhone 7 Screen & Battery Replacement
- iPhone 7 Plus Battery Replacement
- iPhone 8 Screen & Battery Replacement
- iPhone 8 Plus Screen & Battery Replacement

Connect with us online! We would love to hear how your repair went

