

IPHONE 11

SCREEN REPLACEMENT GUIDE

TECHXS

TOOLS CHECKLIST

Check to ensure you received all of the following tools in your TechXS Repair Kit.
Each tool plays a role in helping to complete this repair!



Pentalobe Screwdriver
(PENTALOBE)

This is the blue driver.



Tri Point Screwdriver
(TRI POINT)

This is the gold driver.



Phillips Head Screwdriver
(PHILLIPS)

This is the silver driver.



Flat Head Screwdriver
(FLAT HEAD)

This is the red driver.



Plastic Pry Tool
- Black
(P-PRY TOOL)

Long, black, plastic tool.



Plastic Triangle Pick
- Blue
(BLUE PICK)

Small, blue guitar pick.



Plastic Triangle Pick
- White
(WHITE PICK)

Small, white guitar pick.



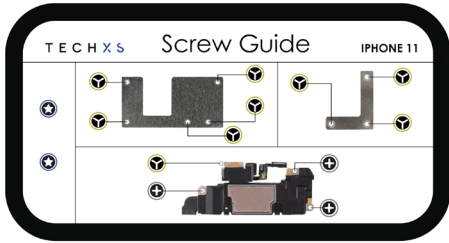
Suction Cup
- Clear
(SUCTION CUP)

Used to help open device.



Metal Pry Tool
- Metal
(M-PRY TOOL)

Black, rotatable stand.



TechXS' Custom Magnetic
Screw Chart
(SCREW GUIDE)

To keep track of your loose screws.



Screen Holder
- Black
(HOLDER)

Small black plastic holder.



Brush
- Black
(BRUSH)

Small black brush.



Tweezers
- Black
(TWEEZERS)

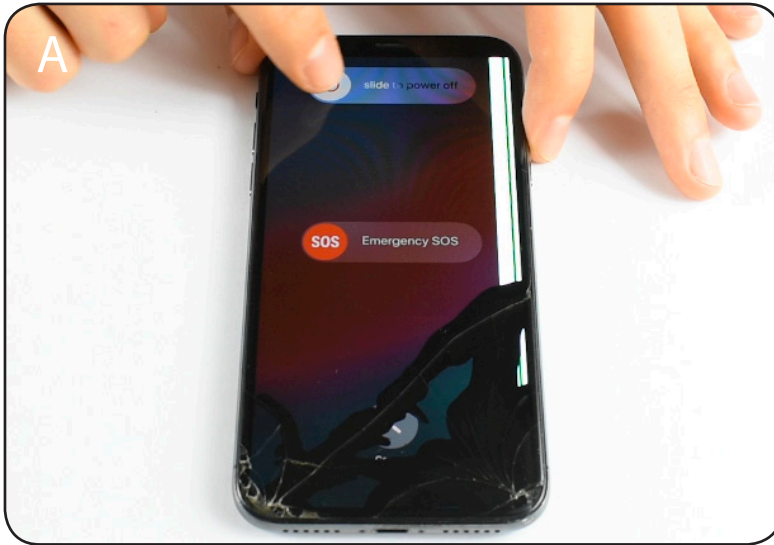
Black fine point tweezers.

STEPS FOR COMPLETION

1.	Open the Screen	
	Slide to power off	5
	Remove Pentalobe screws	5
	Apply Suction Cup	6
	Use Pick and M-Pry tool to separate screen	6, 7, 8
2.	Remove the First Metal Bracket	
	Remove the bracket covering the battery connector	9
3.	Disconnect the Battery	
	Unplug the battery	9
4.	Remove the Metal Bracket Covering the Screen Cables	
	Remove the bracket securing the screen cables	10
	Unplug the two screen cables	11
5.	Remove the Ear Speaker Module from Your Old Screen	
	Remove screws securing Ear Speaker	13
	Remove entire module from the screen	13, 14, 15
6.	Re-apply the Ear Speaker Module to Your New Screen	
	Re-sit the Module	17
	Secure the Module with four screws	18
7.	Apply the New Adhesive	
	Remove old adhesive from frame	19
	Apply new adhesive	20, 21
8.	Install Your New Screen	
	Brush screen cables and connectors with anti-static brush	22
	Plug in screen and front camera battery cables	22, 23
9.	Re-apply the Two Metal Brackets	
	Re-apply the first metal bracket	23
	Plug in the battery	24
	Re-apply the second metal bracket	24
10.	Close and Secure Your Phone	
	Close and seat your new screen in the frame of the phone	25
	Re-apply the two Pentalobe screws to secure your new screen	26

1. Open the Screen

Tools: PENTALOBE | M-PRY TOOL | SUCTION CUP | BLUE PICK



A) Hold the power/sleep button on the right side and the volume down key on the left side until the 'slide to power off' shows up on the screen. Slide the arrow from left to right.

Note: If it is not possible to power off your device, extra care must be taken to ensure step 4(B) is completed before the screen is disconnected.



B) Using the blue PENTALOBE Screwdriver, remove the two Pentalobe screws located at the bottom of the device near the charging port.

Apply adequate pressure and rotate anticlockwise.



C) Apply the suction aid sticker to the lower half of the damaged screen (the lower the better).

Now press the SUCTION CUP onto the sticker as close to the home button as possible.



D) Insert METAL PRY TOOL here, between the frame and screen. Ensure to angle the tool at a 90 degree angle to the table. Use the SUCTION CUP as an aid in creating a gap



E) The tip of the METAL PRY TOOL should insert 2-3mm. Next, lift the corner of the screen from the frame by swinging the METAL PRY TOOL to a 180 degree angle

Take note of how deep our METAL PRY TOOL is and try to replicate



F) Insert the PICK right beside the METAL PRY TOOL. You may need to apply some downward pressure to the METAL PRY TOOL to widen the gap



G) Slide the PICK up either side of the phone to break the adhesive holding the screen down



H) Follow the PICK along one of the unadhered edges to the top of the screen, releasing the adhesive and clips.



I) The screen of your iPhone opens like a book to the right. Be careful not to put too much strain on the cables located on the right side while opening the screen.

Warning: Ensure to slightly lift the screen away from the housing before beginning to swing the screen open, this is because there are clips down the right hand side that could potentially



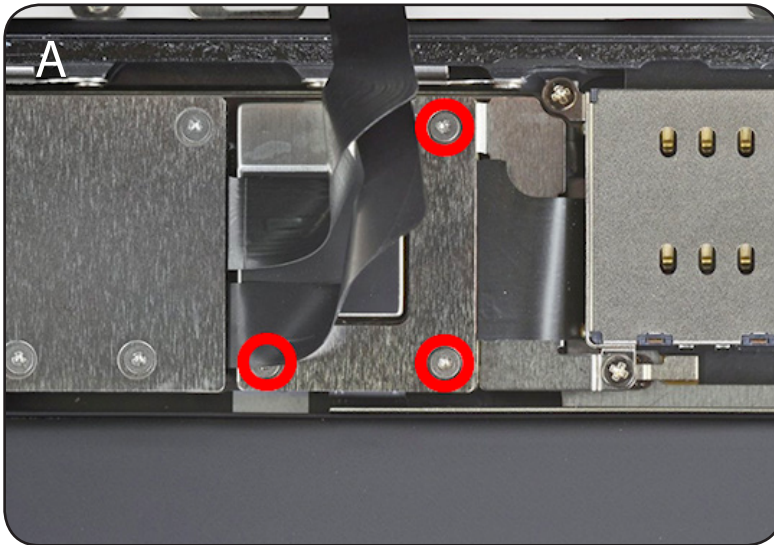
J/K) Once the screen is open, lay it down beside the frame

Note: while performing this step ensure to push the screen in at the same time as laying it down. This will ensure there is no strain or damage caused to the cables or connectors.



2. Remove the First Metal Bracket

Tools: TRI POINT

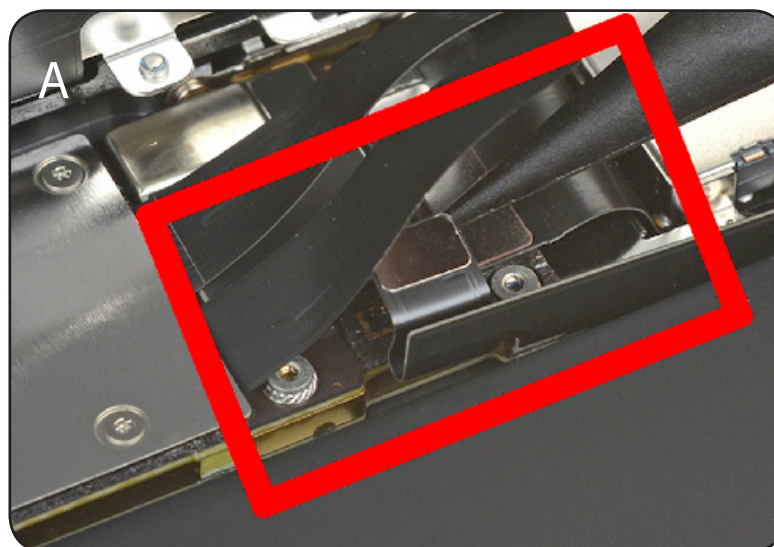


A) Using the gold TRI POINT screwdriver, remove the three screws holding down the metal bracket covering the battery cable.

Apply adequate pressure and rotate anti-clockwise.

3. Disconnect the Battery

Tools: P-PRY TOOL



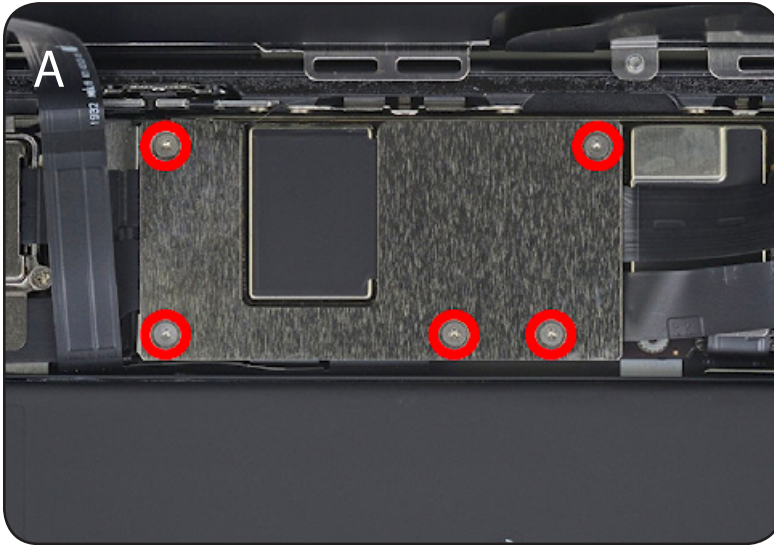
A) Using the flat end of the PRY TOOL, unclip battery connector cable from its socket.

Place edge of PRY TOOL just under the connector and slowly rotate anti-clockwise to disconnect.

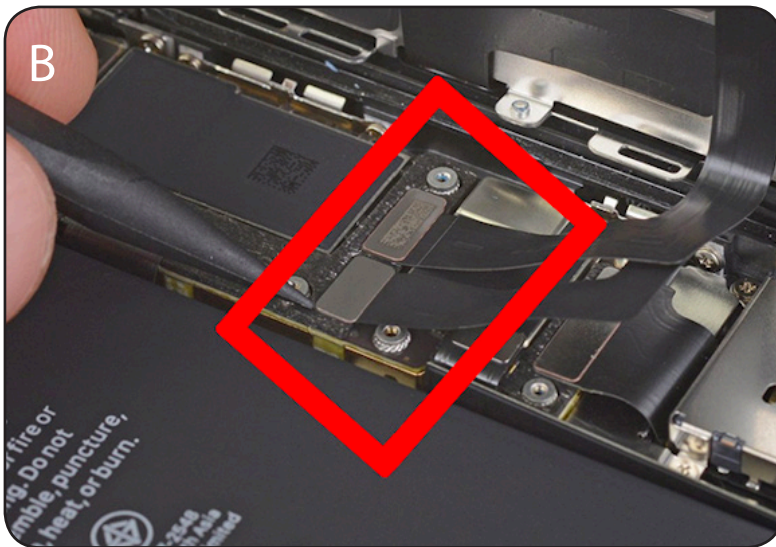
Note: Leave the battery plug seated upright, away from the socket to ensure there will be no power flowing through the device

4. Remove the Metal Bracket Covering the Screen Cables

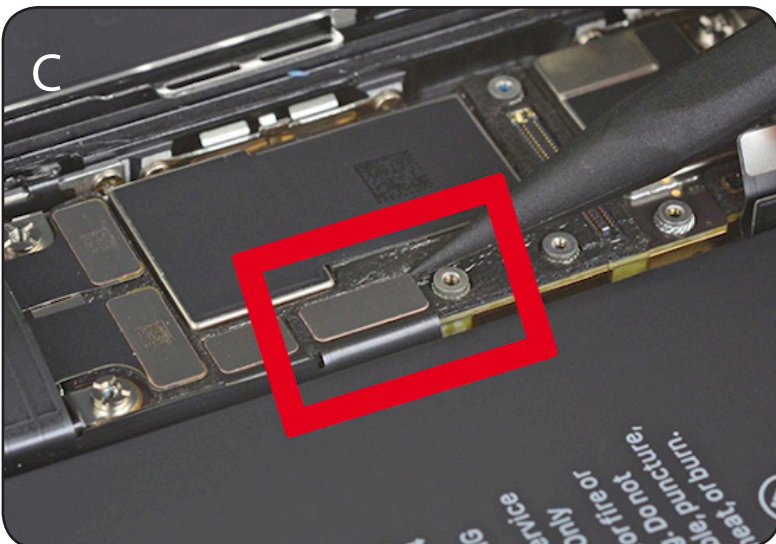
Tools: TRI POINT | P-PRY TOOL



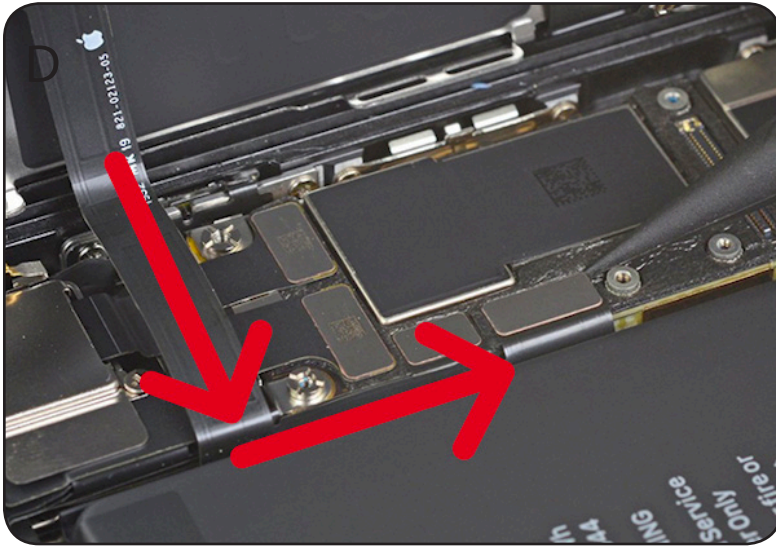
A) Using the gold TRI POINT screwdriver, remove the five screws securing the Earpiece cable shield plate.



B) Using the flat end of the PRY TOOL, disconnect the two screen cables.



C) Using the flat end of the PRY TOOL, disconnect the Earpiece cable from its sockets.



D) The easiest way to work out which cable this is, is by following it from the rear of the cable down to the point of connection.



E) The screen is now free, remove it and place it aside.



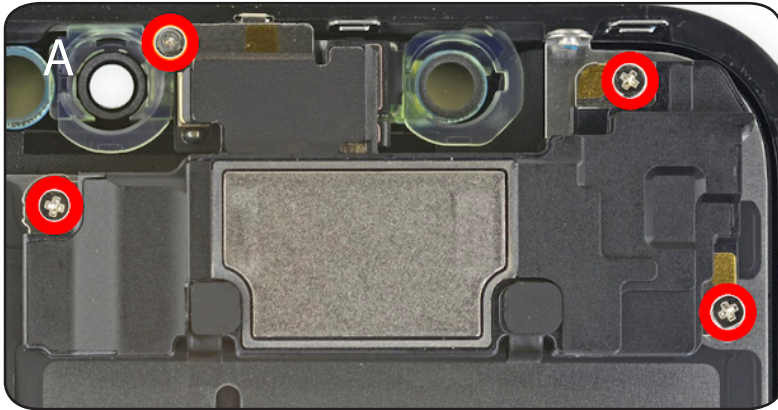
Warning

The iPhone 11 Earpiece Speaker and Front Sensor assembly you are about to remove is fragile, making it quite easy to tear/damage. Please ensure to watch this step all of the way through before performing. It is only advised to be attempted in the following way.

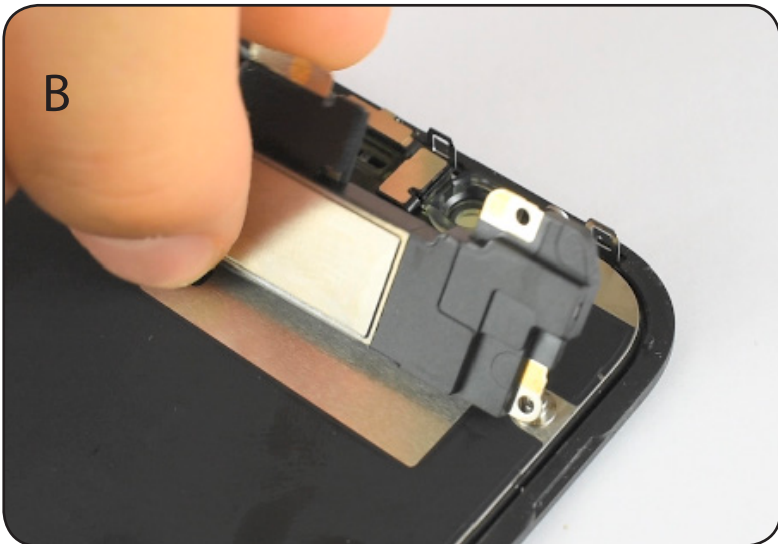
Note: If this component is damaged, you may lose Face ID functionality

5. Remove the Ear Speaker Module From Your Old Screen

Tools: TRI POINT | PHILIPS | P-PRY TOOL



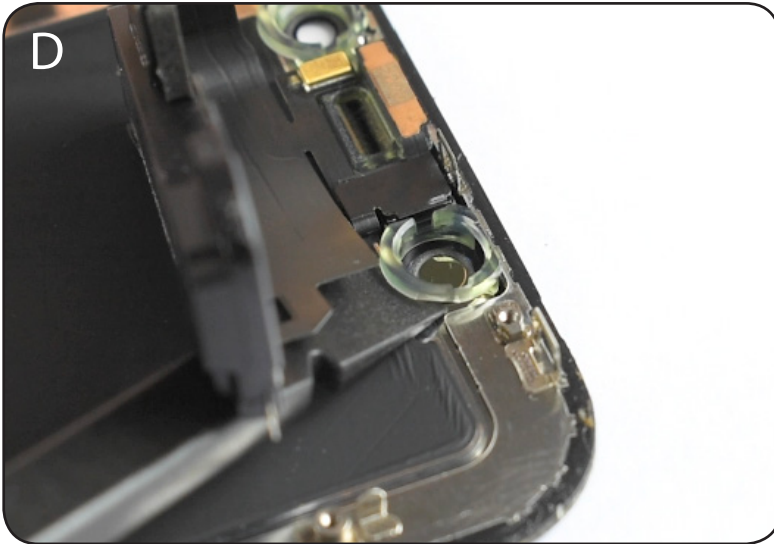
A) Using the gold TRI POINT screwdriver and silver PHILIPS screwdriver, remove the four screws securing the Ear Speaker and Front Sensor Assembly, and place aside on the SCREW GUIDE.



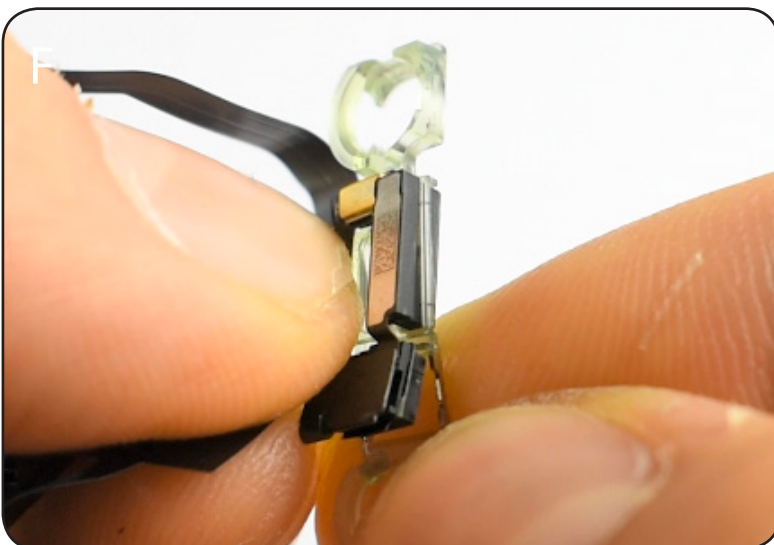
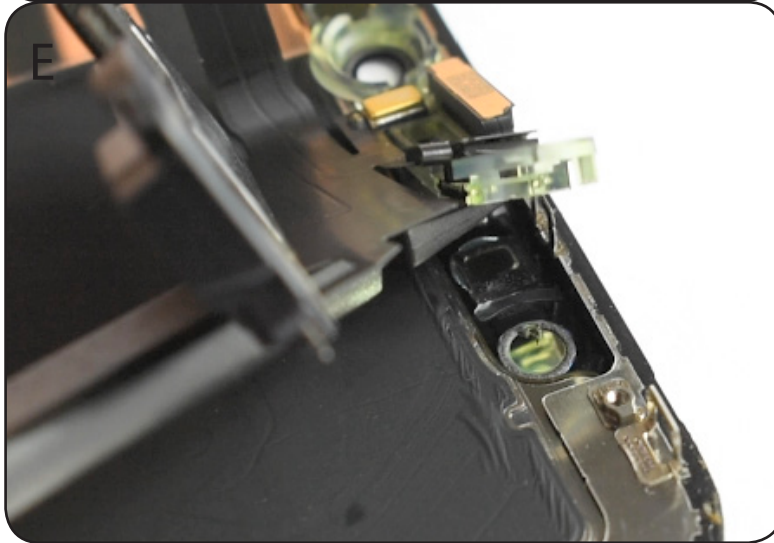
B) Fold the top layer of the module down.



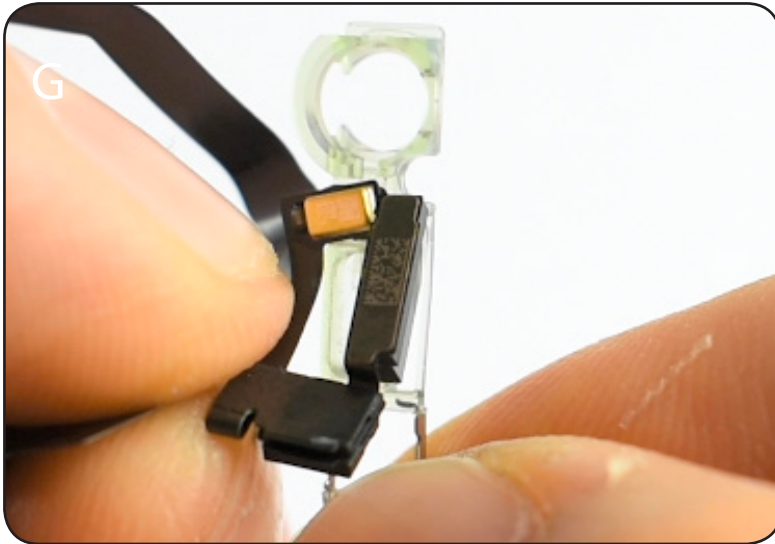
C) Use the flat end of the PLASTIC PRY TOOL to gently remove this small clip.



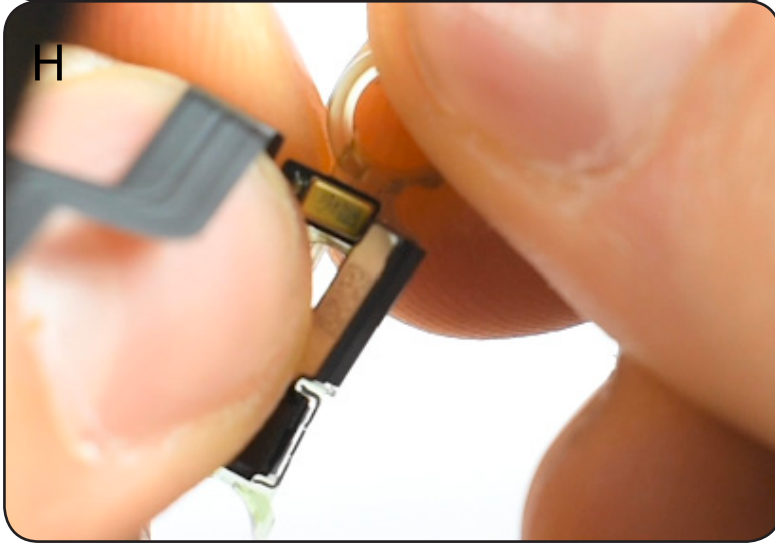
D/E) Slide the flat end of the PLASTIC PRY TOOL under the plastic camera housing, prying it away from the screen. Slightly twist the PLASTIC PRY TOOL while sliding to break the adhesive



F) Gently bend the plastic housing to separate from the module.

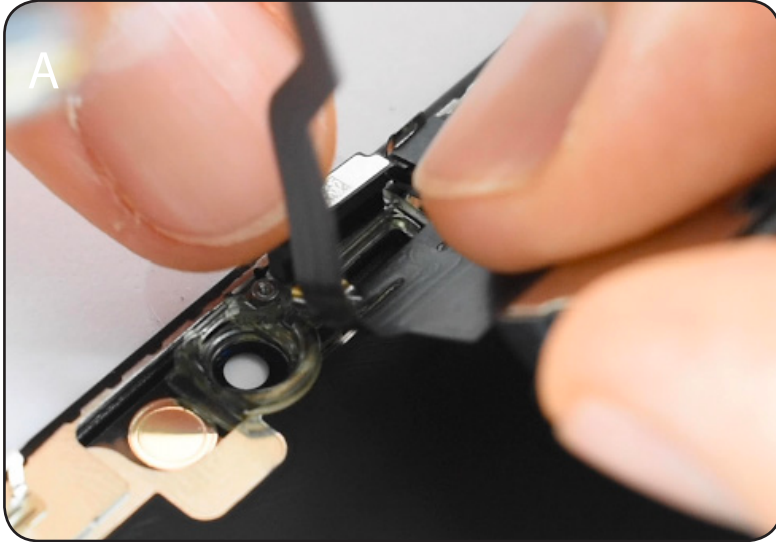


G) Each component of the Ear-speaker and Front Camera module should easily fall out of their respective housings



6. Re-apply the Earpiece Module To Your New Screen

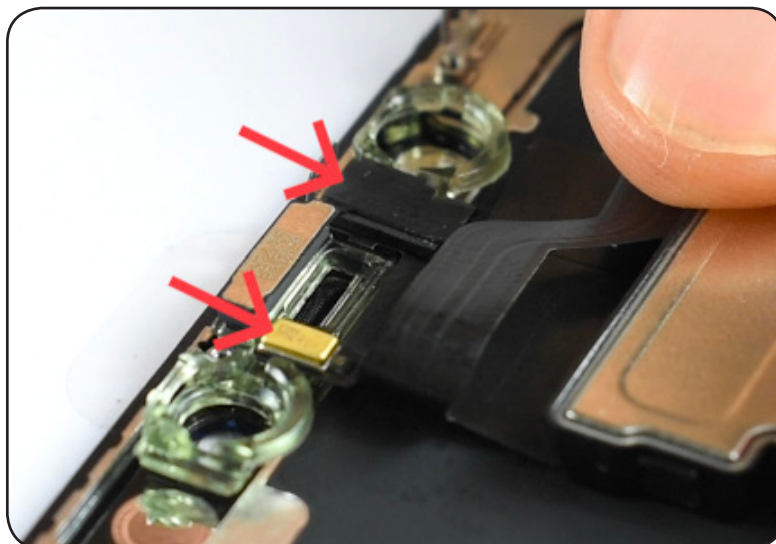
Tools: TRI POINT | PHILIPS



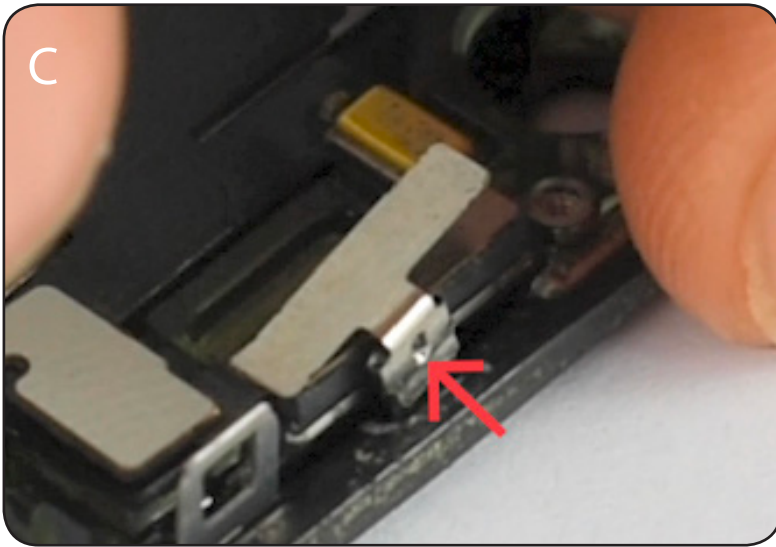
A) Insert the top sensor of the module into the top of the plastic housing.

Note: The other sensors on this module will be aligned to their respective spots once this top sensor is in place

Note: This will be the hole at the very top of the plastic housing



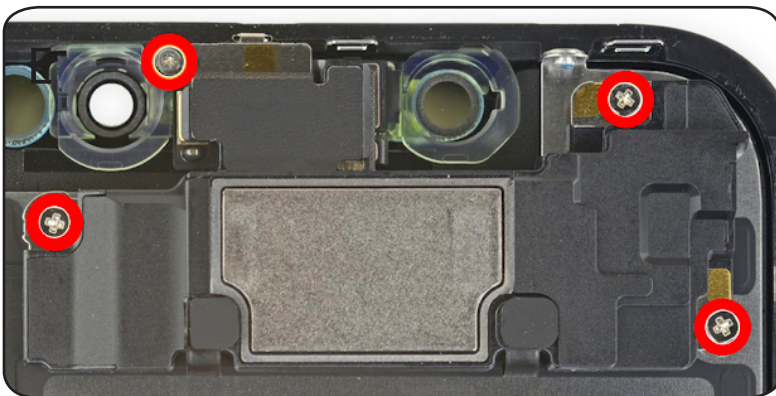
B) Press the Proximity Sensor and Microphone into place with some force.



C) Re-attach the small clip



D) Fold the top of the module back into place.



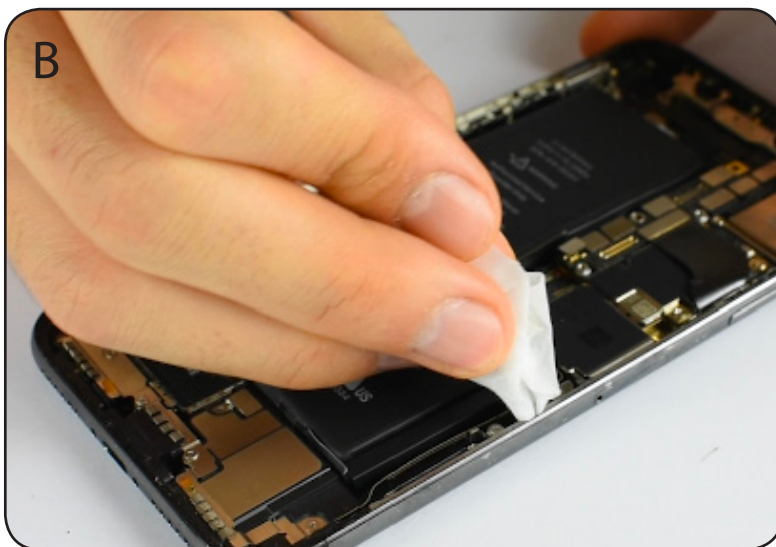
E) Using your TRI POINT and PHILLIPS screwdriver, re-apply the four screws to secure the module back into place.

7. Apply the New Adhesive

Tools: PLASTIC PRY TOOL

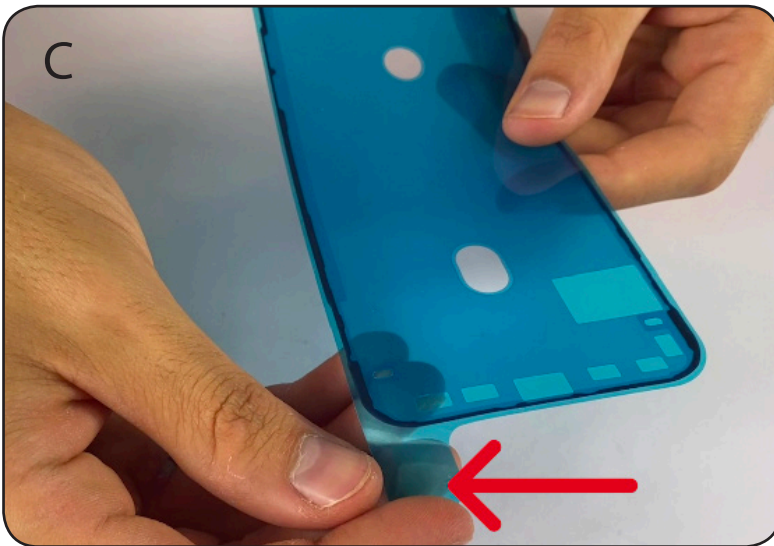


A) Using the flat end of the PLASTIC PRY TOOL scratch the remaining adhesive off the aluminium frame.



B) If you would like to clean the aluminium frame further, use lint free cloth to remove any adhesive residue that might still be there.

Note: This step is optional, it is not required



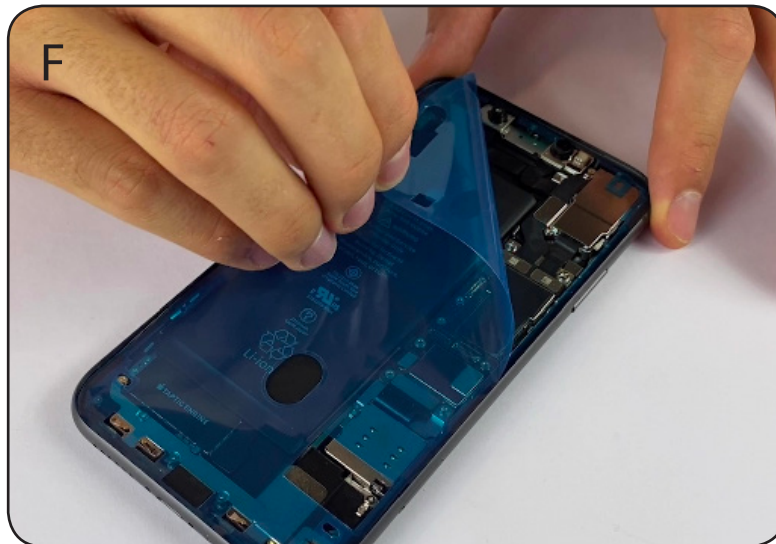
C) Gently remove the first tab from this point.



D) Carefully align the new adhesive around the aluminium frame.



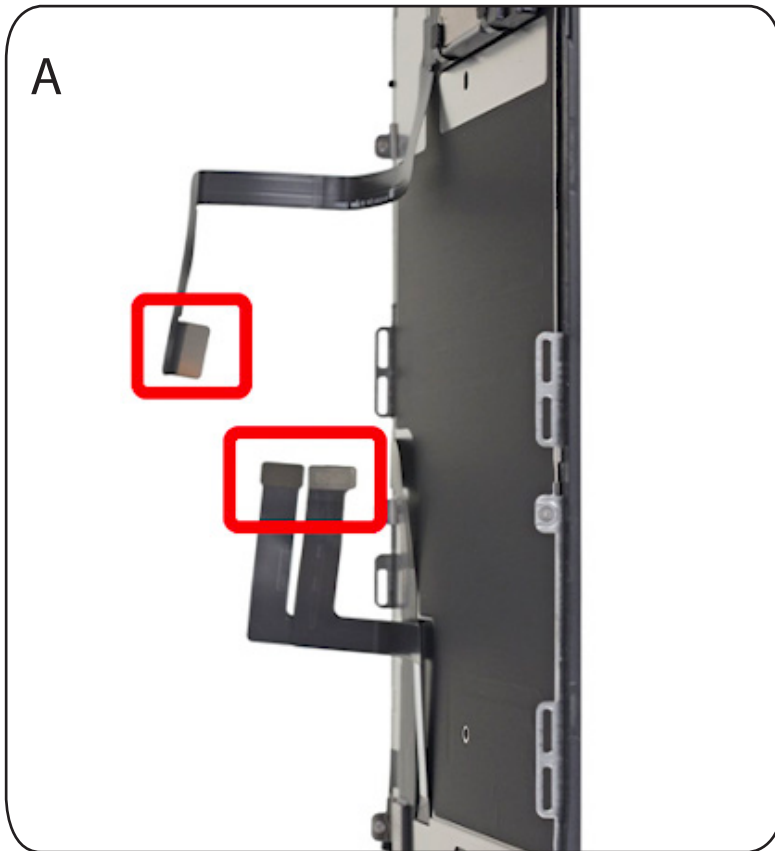
E) Using the flat end of the PLASTIC PRY TOOL trace around the new adhesive on the aluminium frame.



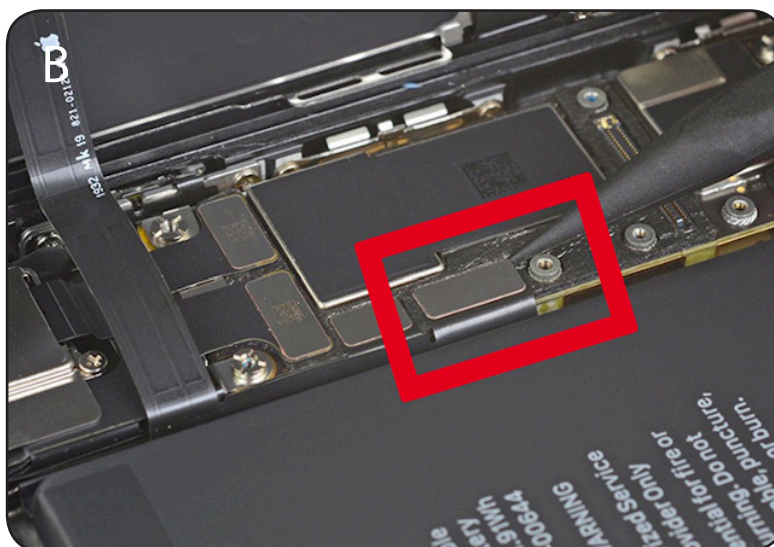
F) Remove the remaining plastic, to expose the adhesive.

8. Install Your New Screen

Tools: BRUSH | TRI POINT

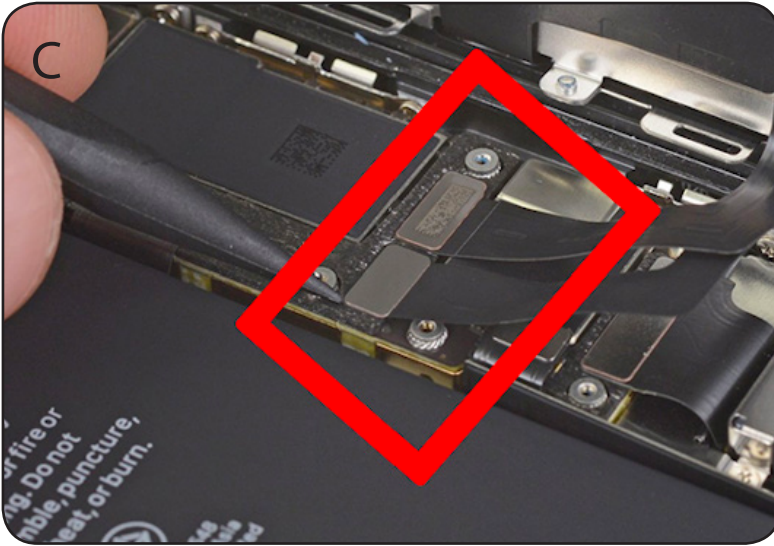


A) Brush the three cables on the screen to remove any static charge that might be surrounding them prior to reconnecting.



B) Plug in the new screen. lay it down beside the frame and connect the Earspeaker cable first.

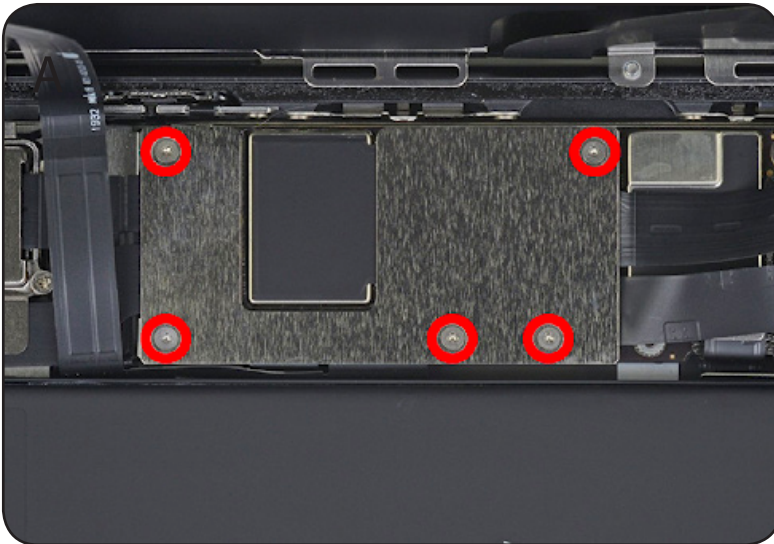
IMPORTANT: This is based on feel, gently move the cable around until they feel aligned, then connect. do not use excessive force.



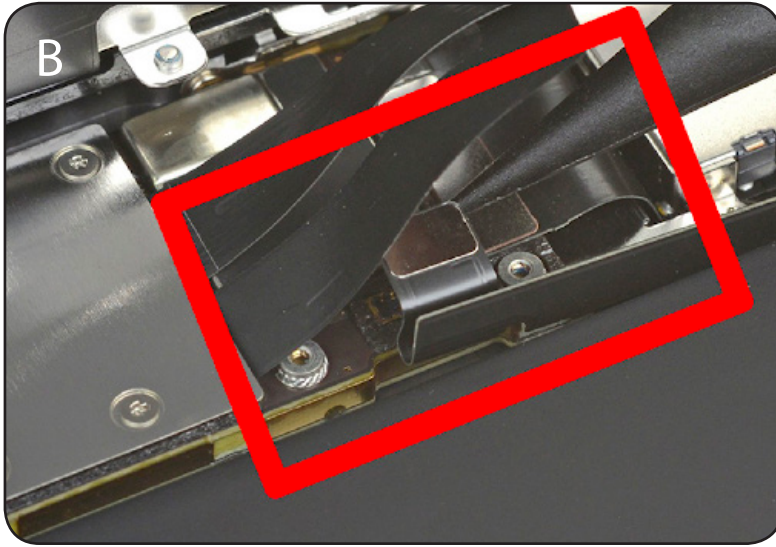
C) Plug the screen cables into their respective sockets.

9. Re-apply the Two Metal Brackets

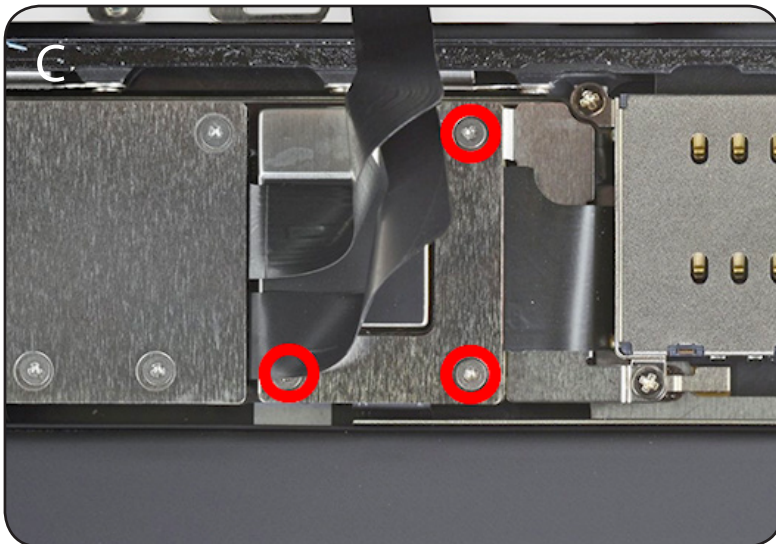
Tools: TRI POINT



A) Using the gold TRI POINT screwdriver, re-apply the five screws securing the Earpiece cable shield plate.



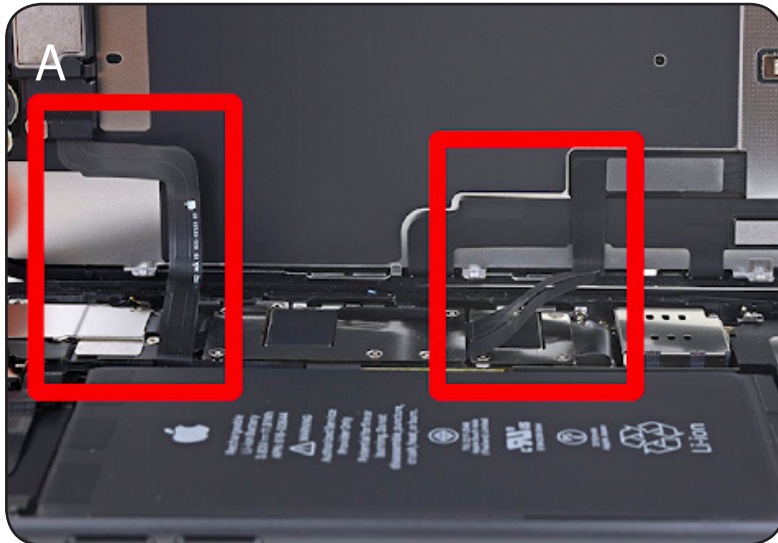
B) Plug in the Battery.



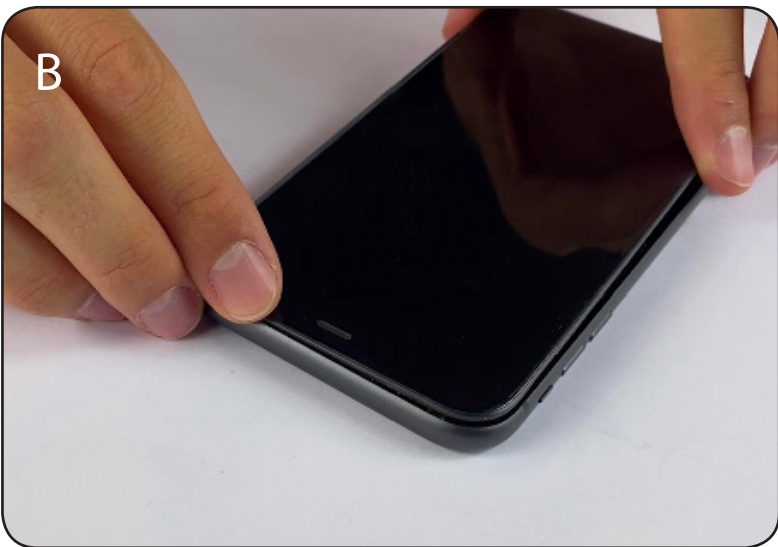
C) Using the gold TRI POINT screwdriver, re-apply the three screws to secure the shield plate covering the battery.

10. Close and Secure Your Phone Screen

Tools: PENTALOBE



A) When seating the screen back into the frame, ensure all three cables are folding in the direction of this photo.



B) Hook the top of the screen into the top of the frame



C) Gently clip both sides and bottom of screen into place

NOTE: do not use excessive force.



D) Using blue PENTALOBE screwdriver, screw two screws into the two holes at the bottom of your phone to secure it from

THE END

Kits are also available for:

- iPhone 6 Screen & Battery Replacement
- iPhone 6 Plus Screen & Battery Replacement
- iPhone 6s Screen & Battery Replacement
- iPhone 6s Plus Screen & Battery Replacement
- iPhone 7 Screen & Battery Replacement
- iPhone 7 Plus Screen & Battery Replacement
- iPhone 8 Screen & Battery Replacement
- iPhone 8 Plus Screen & Battery Replacement
- iPhone X Screen & Battery Replacement
- iPhone XS Screen & Battery Replacement
- iPhone XS Max Screen & Battery Replacement

Connect with us online! We would love to hear how your repair went

