

OTG11351G

Zim | Grey High Back Weight Sensing Synchro-Tilter



- Synchro-tilt mechanism
- Wrap round mesh back design
- Black polyester seat with a Grey mesh back
- Height adjustable T-arms with soft self-skinned urethane (SSU) armcaps
- Multi position tilt-lock and weight sensing tension
- Seat depth adjustment
- Pneumatic seat height adjustment

Upholstery Options:

Back Mesh - Grey

Seat Black polyester



Specifications

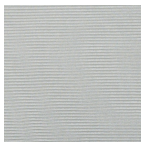
Dimensions: 26"W x 24.5"D x 43"H

Seat Height: 18" - 22.5"

Weight: 37.5 lbs / 17.0 kg

Volume: 5.75 ft³ / 0.16 m³

Mesh Back



Grey

Ergonomics



Chair Tilt
Lock



Seat
Height



Seat
Depth



Arm
Height



Synchro-
Tilt
Movement



Waterfall
Seat
Edge



Contoured
Cushions