

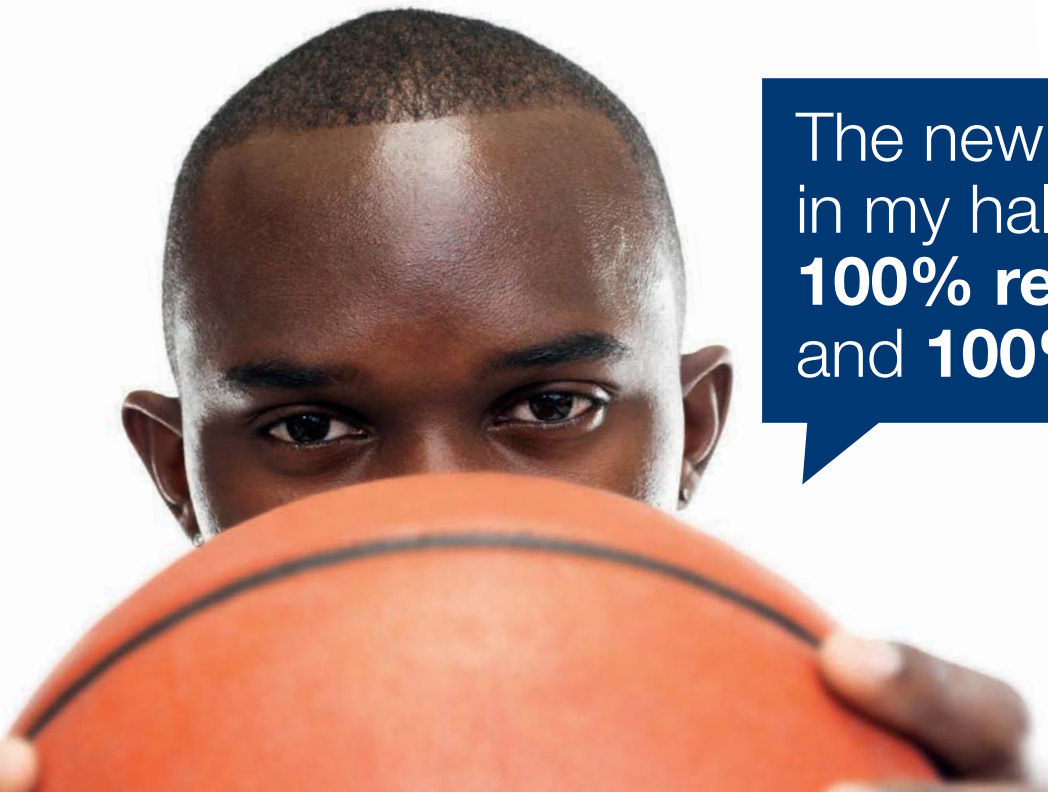
# SPORT

Global solution  
for sports wood floors  
heavy use



**Blanchon**

Quality is in our nature



The new line markings in my hall will be **100% resistant** and **100% odourless.**

## Quality and Safety

Sports floors suffer a lot of hard wear and must comply with high quality standards. Blanchon satisfies every need by offering special high-performance products that are resistant and easy to maintain while offering complete **safety for the players.**



Blanchon offers a global solution to satisfy all of **the new FIBA\* regulations**

- 3-point line changed to 6.25 m;
- 3-point line created at 6.75 m;
- Restricted zone changes from trapezoid to rectangle;
- Marking out of a block/charge arc, under the basket, in the new rectangular restricted zone;
- Marking out of new reference points, at 8.25 m from the base line.

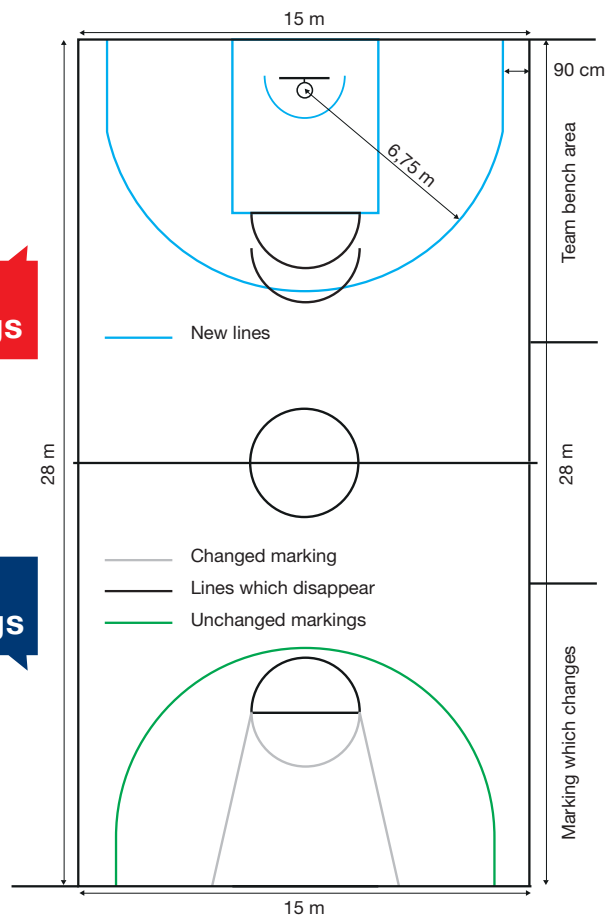
\* International Basketball Federation



Slip/skid report NF EN 13036-4  
The GEV-EMICODE® EC1 and EC1R labels (low solvent emissions, minimum odour) offer the most ecological approach to indoor works.

**New markings**

**Old markings**



# A complete range: finishing, 100% water-based – odourless



More than  
**30 years**  
of expertise!

A palette of **38 colours** for your sports surfaces and club colours!



## SPORT™- A special lacquer for sports floors.

- 2-component wood floor lacquer, based on water-based polyurethane resins
- Exceptional performance
- Resistant to abrasion, scrapes, scuffs and black marks from shoes
- Dries and hardens quickly
- Slip/skid report NF EN 13036-4 on request

The slip resistance of the **SPORT™ Blanchon lacquer** has been tested in accordance with DIN 18 032. Its uniform finish gives it a flawless appearance, which enhances the playing surface. Thanks to its exceptional resistance to wear, it offers efficient and long-term protection for sports floors.

## SPORT SURFACES PAINT

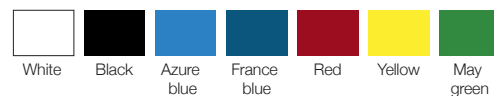
Ideal for large surface areas.

- Single-component water-based polyurethane paint
- Special playing surfaces or supporter stands
- Easy to apply
- Matt finish, excellent coverage rate
- Can be recoated with SPORT™ lacquer if necessary
- Classic colours (with RAL equivalence): white, black, bright blue, France blue, red, yellow, May green
- Colour swatches for 14 blends with RAL comparisons and 17 other possible blends, available at [www.blanchon.com](http://www.blanchon.com)
- Slip/skid report NF EN 13036-4 on request

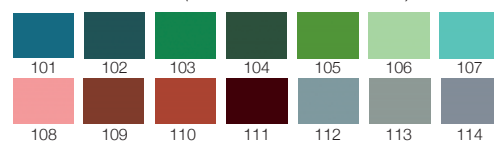
The **Blanchon Sport Surfaces Paint** was specially formulated for large sports surfaces in gymnasiums, multipurpose community halls, etc. It can be used on wood, PVC, on **SPORT™** lacquer or on pre-varnished wood floors\*.



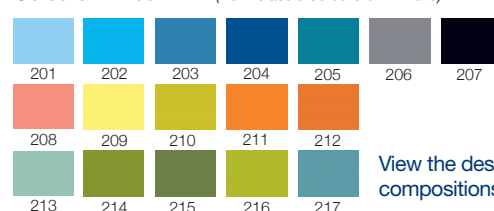
### Classic colours



### Colours with RAL (from classic colours or mixture)



### Colours without RAL (from classic colours or mixture)



View the descriptions of the colour compositions on the website

\*Carry out a compatibility test in advance, an 80 grain sanding will always be necessary



# marking and maintenance

## – high-performance



### SPORT™ STRIPES PAINT

Specially formulated for sports line markings

- 2-component water-based polyurethane paint
- Gel formula: will not run under floor-marking tapes
- Excellent adherence on most surfaces
- Matt marking
- Can be recoated with SPORT™ lacquer if necessary
- Standardised colours : white, yellow, red, black, Azure blue
- slip/skid report on request NF EN 13036-4

Blanchon Sport™ Stripes Paints are long-lasting and practical: presented in pre-dosed kits. They are usually applied in 1 coat to laminated or painted wood floors and dry quickly, without unduly delaying the use of the hall.



### CLEANER

A multi-surface cleaner

- Ideal maintenance for gyms and sports halls
- Preserves the original finish of the floors
- Cleans and revitalises
- Silicon-free
- Concentrate for dilution

The Blanchon Cleaner is recommended for frequent cleaning of wood floors subject to heavy use. It cleans floors and gives a beautiful finish in a single operation. Maintenance is a decisive factor in the quality and longevity of a sports floor.

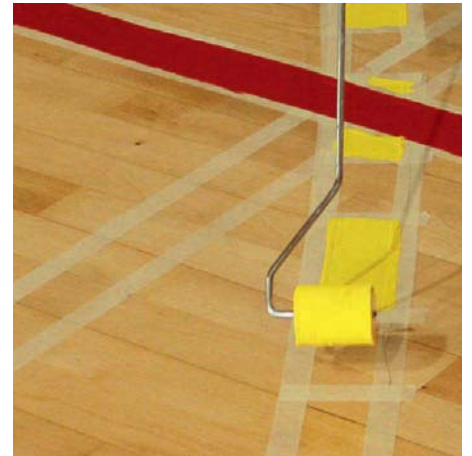
NB: On pre-varnished wood floors, carry out a test on an inconspicuous area before treating the whole surface.





**Blanchon Sport™  
Stripes Paints**  
have been used  
on Olympic surfaces  
for 30 years!

Many top-level sports halls requiring excellent performance and quality already use and trust **Blanchon**



Palais des Sports de Beaublanc (Limoges)  
Salle multi activités (Paris Bercy)  
Gymnase ENSIA (Toulouse)  
Palais des sports et congrès (Alpes d'Huez)  
Astroballe (Villeurbanne)  
Salle Salusse Santoni (Stade Foch Antibes)  
Les Docks Océane (Le Havre)  
Gymnase Universitaire (Mulhouse)  
Salle des sports (Colmar)  
Stade Léo-Lagrange (Fontenay-sous-Bois)  
Stade Bonnal (Sochaux)  
Stade Georges Pompidou (Vincennes)  
Centre de préparation pré-olympique (Vittel)  
Palais des sports (Illzach)  
Gymnase Herstal (Belgique)  
Gymnase Dauga (Bayonne)  
Gymnase Compans (Toulouse)  
Palais des sports (Paris)  
Salle de sport du Lycée Bartholdi (Colmar)  
Palais des Sports Pierre Ratte (Saint-Quentin)

• • •



**BLANCHON SA**

28, rue Charles Martin  
BP 105 – 69192 SAINT FONS CEDEX – France  
e-mail : commercial@blanchon.com  
www.blanchon.com

**Blanchon UK Ltd**

Wallside House, 12 Mount Ephrain Road  
Tunbridge Wells, Kent TN1 1EG  
www.blanchon.co.uk

**Export Lines**

Tel.: (00 33) 472 89 06 09  
Fax: (00 33) 472 89 06 02

As part of its global policy of respect for people and the environment, Blanchon has chosen to produce this document on 100% recycled paper and has entrusted it to an Imprim'Vert certified printer.



Respect  
for people and the  
environment



www.blanchon.com

