

**OneWholesale.ca OneMarketplace**

# Custom Application Setup Guide

CUSTOM APPLICATION SETUP GUIDE FOR E-DISTRIBUTION PARTNERS



# CUSTOM APPLICATION SETUP GUIDE

All information in this Custom application setup guide is current at the time of publication.

However, One Trading Ltd. reserves the right to make changes at any time so that our policy of continual service improvement may be carried out.

This guide applies to One Trading E-distribution program and includes descriptions and explanations.

No part of this book may be reproduced or used in any manner without the prior written permission of the copyright owner, except for the use of brief quotations in a book review.

To request permission, contact the publisher at

[support@onewholesale.ca](mailto:support@onewholesale.ca).

Edited by One Trading Ltd.

**One Trading Ltd.**

#29-1111 Flint Rd. North York, ON M3J 3C7

416.661.6664

**[www.onewholesale.ca](http://www.onewholesale.ca)**

# CUSTOM APPLICATION SETUP GUIDE

This innovative solution empowers customers to effortlessly integrate our product listings into their own websites. By installing a program, users can seamlessly synchronize the items showcased on our platform with their own websites in real-time. This revolutionary service enables customers to conduct wholesale transactions directly through their websites, eliminating the need to visit our platform or warehouse.

When a wholesale order is placed on the customer's website, we promptly generate the order and send a notification for payment. Once payment is received, we handle the shipping process, ensuring a smooth experience for both our customers and their clients.

**To be integrated with the One trading system, You will need to provide the following keys:**

- Admin API access token
- API key
- API secret key
- Shopify given domain 'myshopify.com' URL

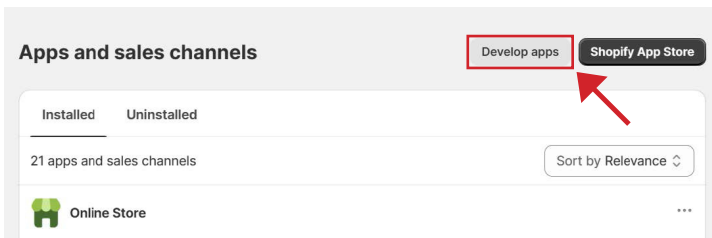
Understanding Custom Applications

[Shopify Help Centre | Custom apps](#)

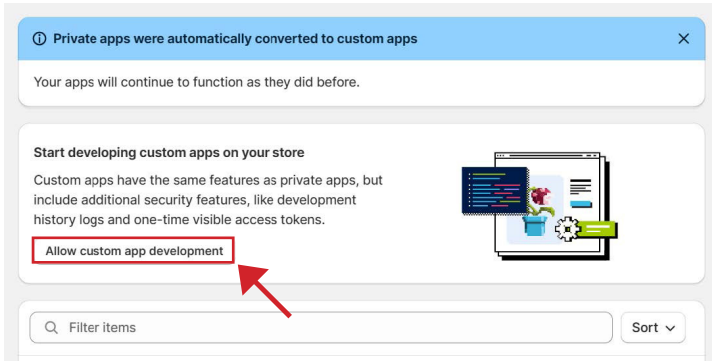
## 1. Getting ready (Activating)

Activate custom app development from the Shopify admin.

1. From your Shopify admin, click settings > [App and sales channels](#).
2. Click Develop apps.



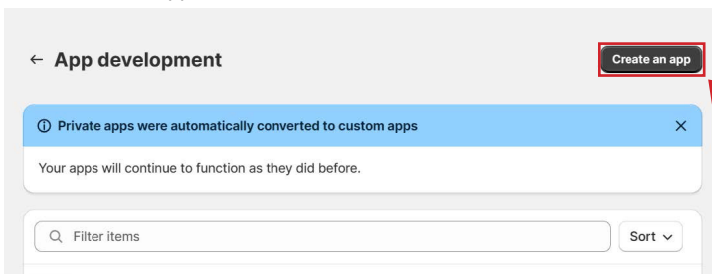
3. Click Allow custom app development.



4. Read the warning and information provide, and then click allow custom app development.

## 2. Getting ready (Creating)

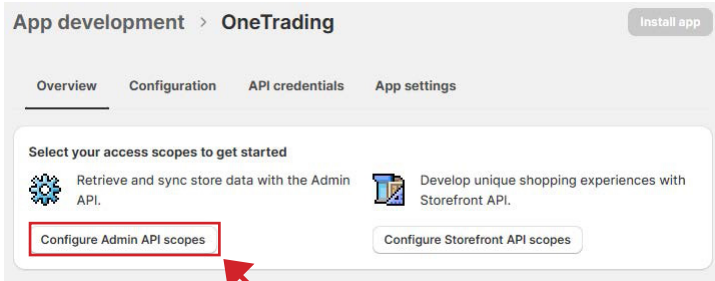
1. From your Shopify admin, click settings > [App and sales channels](#).
2. Click Develop apps
3. Click Create an app.



4. In the modal window, enter the App name and select an App developer. The app developer can be the store owner, or any staff or collaborator account with the Develop apps permission.
5. Click Create app.

### 3. Configuring Admin API

1. Click Configure Admin API scopes.



2. In the Admin API access scopes section, select followings:

#### · Orders > Read\_orders

##### Orders

ⓘ Includes personally identifiable information

View or manage orders, transactions, fulfillments, and abandoned checkouts

write\_orders

read\_orders

#### · Products > Read\_products

##### Products

View or manage products, variants, and collections

write\_products

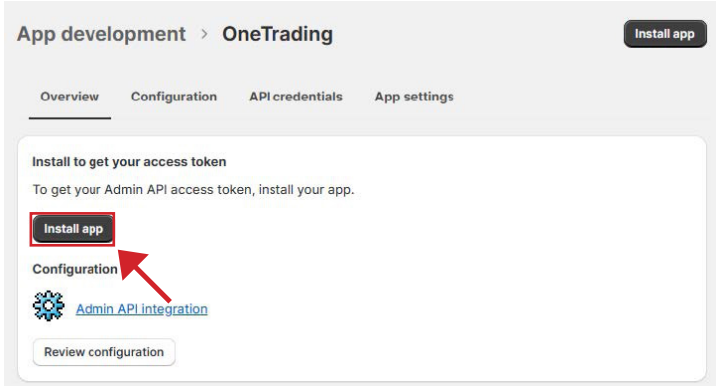
read\_products

3. Click Save.

## 4. Getting API Access Tokens

After You've set API scopes for your app, you can now install and get your API access tokens.

1. Click Install app.

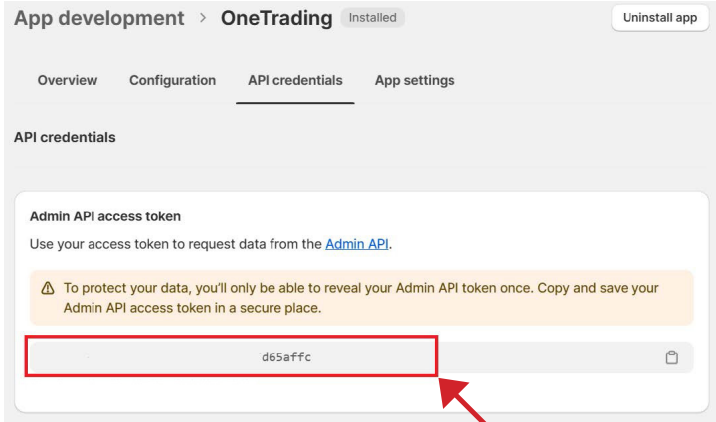


2. Get the access token.

### ⚠ Caution

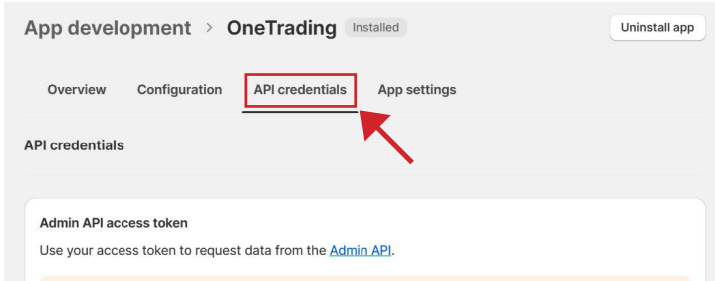
The Admin API access token is displayed one time only, because the token provides API access to sensitive store data. After revealing the access token, write down or record the token somewhere secure so that you can refer to it again.

Treat the token like a password. Share the access token only with developers that you trust.

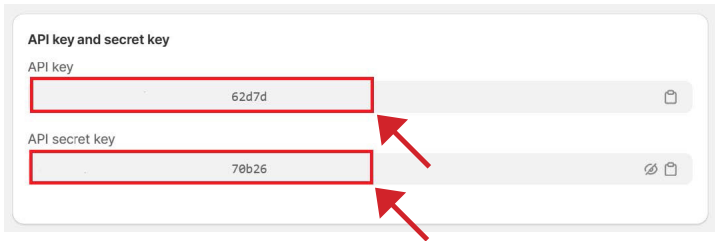


## 5. Getting the API credentials for a custom app

1. Click API credentials.



2. Get the API key and secret key.



Congratulations on successfully installing our E-Distribution program into your Shopify website! Now, you're empowered to effortlessly showcase and sell wholesale items directly from your own platform, eliminating the need to navigate to our distribution website.

With E-Distribution, a world of wholesale opportunities is at your fingertips. Step into a new era of convenience and efficiency — welcome to the future of wholesale selling!

## 6. SyncLogic

This application seamlessly synchronizes products and inventory across multiple stores, offering businesses the convenience of managing diverse storefronts from a centralized platform.

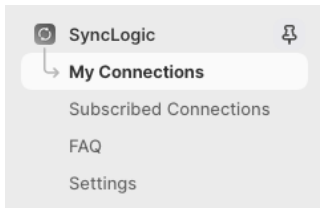
With the ability to automatically generate wholesale orders on your Shopify store and invoice retail shops, this solution caters to the needs of drop-shippers, wholesalers. Instant synchronization ensures that new products, updated details, inventory changes, and more are swiftly propagated to subscriber stores within seconds.

You can download the application at [Shopify App Store](#) or Scan the QR code below.



The application is at USD \$19.99/month with 30-Day free trial.\*As of January 3rd, 2024

Once you have downloaded and installed the application, you will be able to see the following options on Apps tab on the left side of the screen.



Go to Settings.

### How to scan?



1. Open the camera app on your mobile device.
2. Place the camera onto the QR code and let it scan.
3. A link will show up on your camera screen. Click the link.
4. It will redirect you to the page linked to the code.



Toggle options as the following image.

**Subscription Global Sync Preferences**

Sync All Fields when SyncLogic creates new products.  
(New products will initially be hidden because you are not syncing Online Store Visibility below.)

**Subscription Sync Preferences**

Subscription sync preferences only apply to stores that are **subscribing to connections from other stores**. They do not apply to stores who are sharing their products with other stores.

Subscription sync preferences allow you to set which fields on products on this shop will be synced to automatically and which ones we will ignore. These settings are only applied to **incoming** changes, so please make sure you set them on the shop receiving the changes, not the shop that originates the changes.

**Title**  New products will always duplicate the title.

**Description**

**Images**

**Price**  New products and new variants (SKUs) will always duplicate the price. Price transforms setup in your connections will be applied.

**Online Store Visibility (Online Store published state)**  New products will initially be hidden if this is disabled.

**Compare at Price**

**Charge Taxes**

**Tax Code**

**SKU**

**Barcode**

**Inventory Tracking**

**Inventory Quantity**  New products will initialize to an inventory of 1 per variant if this is disabled, depending on the state of Inventory Tracking.

**Allow purchases when out of stock**  This refers to syncing this setting from the source product, not to be confused with actually allowing purchases. It's typically better to leave this on.

**Requires Shipping**

**Weight**

**Weight Unit**

**Handle**  This is the url path found in the "Search engine listing preview" section of the product admin page. Please note that redirects are not supported on handle updates from a subscription.

**Product Type**

**Vendor**

**Tags**

**Template**

**Image Alt Text**

**Product Status**  Sync of active, draft, and archived states

**Vendor Preferences**

Vendor preferences only apply to stores that have **connections that they are sharing with other stores**. If you are sharing your products with other stores then you can use vendor preferences to configure how your products are shared.

I would like to discount items on my draft orders  % off of the listed price (items will leave the price unaffected).

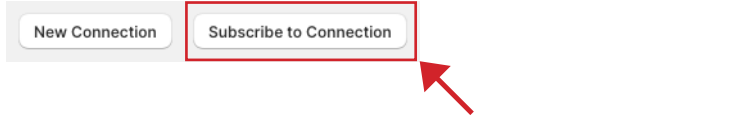
Sync every options except the Price, Online Store Visibility, and Product Status. Click Save when done.

Now, You will need to add a connection to your shopify store using the code below.

**84SLK735** 

Copy the code **84SLK735** and follow the instruction on the next page.

Click **Subscribe to Connection**.



When you have redirected to the page as below, copy the code from the previous page and paste it on the **Connection Code** tab.

### Subscribe to a Connection

Enter a connection code to import products and keep them in sync with the originator's shop.

#### Connection Code

Use a connection code from an existing shop who has generated one using SyncLogic to import their products and keep them synced to your shop.

NOTE - This will create, modify, and delete synced products from your shop.

NOTE - Parent stores can revoke access to a connection and its associated products at any time.

#### Matching Strategy

If you choose match by handle, SyncLogic will try to find a product on your store with the same handle as the incoming product, and if a matching product is found it will assume that they are the same and connect them.

If you choose create new products, SyncLogic will never try to match the incoming products to your existing products. This can and likely will result in duplicate products being created on your store at some point, which can lead to confusion about what is connected and unexpected behavior.

NOTE - This option will be used both on initial connection as well as future product changes made by the parent shop. If a parent store removes a product and re-adds it later and you have 'create new products' as your matching strategy, SyncLogic will automatically create a new product instead of trying to find an existing product, which WILL result in duplicate products on your store.

- Match products with handle on accepted connection (Recommended)
- Create new products on accepted connection

#### Create New Products

If this option is selected we will create new products when we don't find a matching product using the matching strategy you chose above. SyncLogic will not create new products when it does not find a matching product if this option is deselected.

NOTE - This option will be used both on initial connection as well as future product changes made by the parent shop.

- Create new products when one is not found with your selected matching strategy

#### Unlink Behavior

If a synced product is removed from the parent store, there are a few options. The default behavior is to unpublish the product on your shop.

- Unpublish Product
- Delete Product
- Delete or Unpublish Product (unpublish if item has been ordered, delete otherwise)
- No Action

Unpublish products when the parent products are removed from the parent sync.

#### Price Transformations (optional)

Modify or map prices automatically as they are synchronized to your shop.

#### Ready?

If you are ready to import these products then click connect to proceed.

[Connect!](#)

Click **Connect!** button when you are ready.

The process would take up to 48 hours depending on the amount of data that needs to be synced. When everything is synced and good to go, you will be able to see products on your own Shopify Store.

**Memo**

A large, empty rectangular box with a thin orange border, occupying most of the page below the 'Memo' header. It is intended for the user to write their memo content.

**Memo**

A large, empty rectangular box with a thin orange border, occupying most of the page below the 'Memo' header. It is intended for writing the content of the memo.

**Thank you**