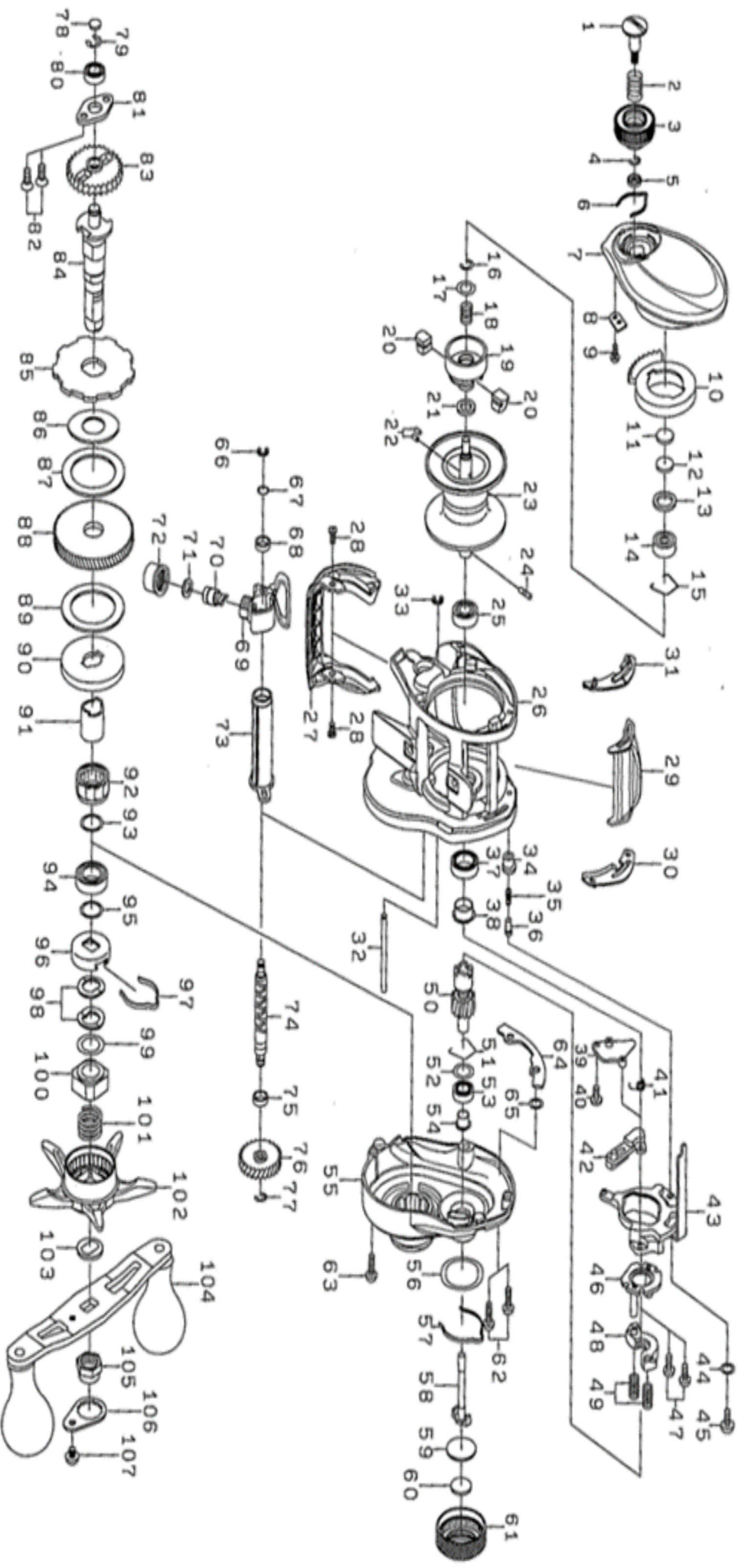




Please quote by part number, not key number when ordering
spares@daiwaaustralia.com.au PH: 02 8644 8644

ZILLION HD 100HS



B2230WA



Please quote by part number, not key number when ordering
spares@daiwaustralia.com.au PH: 02 8644 8644

ZILLION HD 100HS

| Key No. | Part Number | Description | Key No. | Part Number | Description |
|---------|-------------|------------------------|---------|-------------|---------------------------|
| 1 | 6H930401 | Screw(A) | 59 | 6H161001 | Spacer(F) |
| 2 | 6E167101 | Spring(A) | 60 | 6B175503 | Spacer(G) |
| 3 | 6H930219 | Brake dial | 61 | 6J097403 | Cast control cap |
| 4 | 6B339801 | Brake dial Retainer(A) | 62 | 6G040822 | Right side plate screw(A) |
| 5 | 6F637701 | Brake dial washer | 63 | 6G040821 | Right side plate screw(B) |
| 6 | 6H663401 | Brake click spring(A) | 64 | 6J044502 | Plate(B) |
| 7 | 6J265301 | Left side plate | 65 | 6H770601 | "O"ring(B) |
| 8 | 6H915501 | Brake dial Retainer(B) | 66 | 63205901 | Retainer(B) |
| 9 | 6G939301 | Screw(B) | 67 | 6B411700 | Washer(C) |
| 10 | 6J045701 | Magnet holder | 68 | 6G720001 | Worm shaft spacer |
| 11 | 63757400 | Spacer(A) | 69 | 6J176602 | T-Level wind |
| 12 | 63757411 | Spacer(B) | 70 | 61214212 | Line guide pawl |
| 13 | 6G185101 | Spacer(C) | 71 | 63731300 | Washer(D) |
| 14 | 6G511506 | Ball bearing(A) | 72 | 6F402801 | Line guide nut |
| 15 | 6F032201 | Bearing retainer(A) | 73 | 6H910801 | Level wind guard |
| 16-25 | 6Z022528 | Spool assembly | 74 | 6H911702 | Worm shaft |
| 26 | 6J044607 | Frame | 75 | 6G469007 | Ball bearing(C) |
| 27 | 6J045203 | Front plate | 76 | 6H910501 | Worm gear |
| 28 | 6H455402 | Screw(C) | 77 | 6B339801 | Retainer(C) |
| 29 | 6J101601 | Clutch lever | 78 | 6G099800 | Washer(E) |
| 30 | 6H915601 | Spacer(D) | 79 | 63208002 | Retainer(D) |
| 31 | 6H915701 | Spacer(E) | 80 | 6G538007 | Ball bearing(D) |
| 32 | 6H912101 | Stabilizer bar | 81 | 6H928901 | Plate(C) |
| 33 | 6H704101 | Retainer(A) | 82 | 6E134509 | Screw(F) |
| 34 | 6H910601 | Collar | 83 | 6H912701 | Drive shaft gear |
| 35 | 6H928801 | Spring(B) | 84 | 6H911601 | Drive shaft |
| 36 | 6J055201 | Pin | 85 | 6H929401 | Clutch wheel |
| 37 | 6G431002 | Ball bearing(B) | 86 | 6H661101 | Drive shaft washer (A) |
| 38 | 6H266601 | Ball bearing collar(A) | 87 | 6H661001 | Drive shaft washer (B) |
| 39 | 6H912301 | Plate(A) | 88 | 6J075401 | Drive gear |
| 40 | 6H294101 | Screw(D) | 89 | 6H452601 | Drive shaft washer (C) |
| 41 | 6H450001 | Clutch cam spring | 90 | 6H913201 | Key washer |
| 42 | 6J221401 | Clutch trip lever | 91 | 6G545001 | Gear shaft collar |
| 43 | 6H928701 | Clutch cam | 92 | 6G819801 | Roller clutch |
| 44 | 6H159201 | Washer(A) | 93 | 6B553801 | Washer(F) |
| 45 | 63522501 | Screw(E) | 94 | 6G431002 | Ball bearing(E) |
| 46 | 6H659101 | Clutch cam plate | 95 | 6B553802 | Washer(G) |
| 47 | 6B032904 | Clutch cam screw | 96 | 6F028203 | Click leaf spring holder |
| 48 | 6H929001 | Yoke | 97 | 6F032401 | Click leaf spring |
| 49 | 6J055301 | Yoke spring | 98 | 61508901 | Drag spring washer |
| 50 | 6J075301 | Pinion gear | 99 | 6H929501 | Washer(H) |
| 51 | 6H160801 | Bearing retainer(B) | 100 | 6J141001 | Nut |
| 52 | 6J073501 | Washer(B) | 101 | 6J011901 | Spring(C) |
| 53 | 6J019301 | Ball bearing MAGSEALED | 102 | 6J140001 | Star drag |
| 54 | 6H159502 | Ball bearing collar(B) | 103 | 6F576601 | Handle collar |
| 55 | 6J265001 | Right side plate | 104 | 6J265201 | Handle assembly |
| 56 | 6H157002 | "O"ring(A) | 105 | 6G793312 | Handle nut |
| 57 | 6H160901 | Brake click spring(B) | 106 | 6H834504 | Handle plate |
| 58 | 6H159601 | Pinion shaft | 107 | 63538301 | Handle screw |