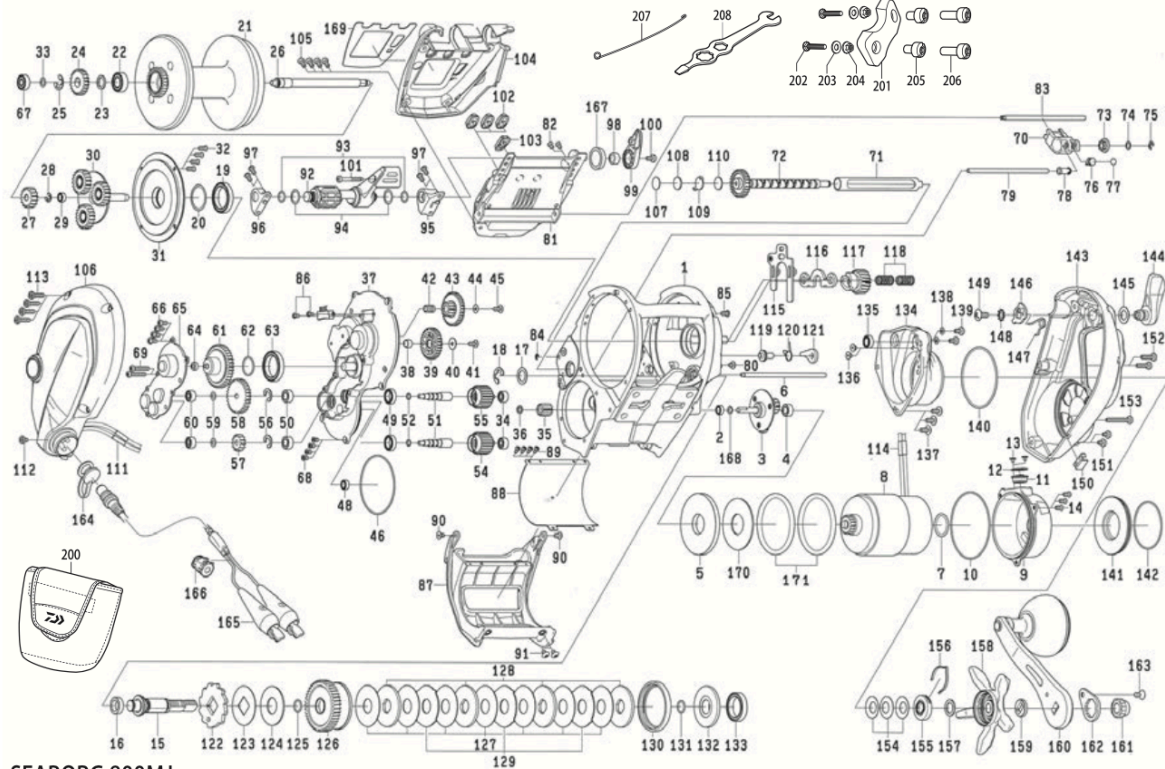


Parts List

SEABORG 800MJ



SEABORG 800MJ

No.	Parts Name	No.	Parts Name	No.	Parts Name	No.	Parts Name
1	FRAME	46	SET PLATE O RING	93	JOG POWER LEVER O RING	138	R/S COVER SCREW (B) WASHER
2	MOTOR GEAR (B) BALL BEARING	48	SET PLATE BALL BEARING	94	JOG POWER LEVER WASHER	139	R/S COVER SCREW (B)
3	MOTOR GEAR (A)	49	MOTOR GEAR SHAFT BALL BEARING	95	JOG POWER LEVER HOLDER (R)	140	R/S COVER O RING
4	MOTOR GEAR (A) BALL BEARING	50	SET PLATE GEAR BALL BEARING	96	JOG POWER LEVER HOLDER (L)	141	MOTOR HOLDER PLATE
5	MOTOR PLATE	51	MOTOR GEAR SHAFT	97	JOG POWER LEVER HOLDER SCREW	142	MOTOR HOLDER PLATE O RING
6	LINE GUARD POST	52	MOTOR GEAR SHAFT O RING	98	JOG POWER LEVER COLLAR	143	R/S PLATE
7	MOTOR O RING (A)	54	MOTOR GEAR (HIGH)	99	JOG POWER LEVER (B)	144	CLUTCH LEVER
8	MOTOR	55	MOTOR GEAR (LOW)	100	JOG POWER LEVER (B) SCREW	145	CLUTCH LEVER WASHER
9	MOTOR HOLDER	56	MOTOR GEAR SHAFT RETAINER	101	JOG POWER LEVER SCREW	146	CLUTCH CAM
10	MOTOR HOLDER O RING	57	IDLE GEAR (C)	102	PUSH BUTTON	147	CLUTCH CAM SPRING
11	MOTOR HOLDER PACKING	58	IDLE GEAR (D)	103	SHIFT SWITCH BUTTON	148	CLUTCH CAM WASHER
12	MOTOR HOLDER PACKING WASHER	59	IDLE GEAR WASHER	104	IC MODULE COVER	149	CLUTCH CAM SCREW
13	MOTOR HOLDER PACKING SCREW	60	IDLE GEAR BALL BEARING	105	IC MODULE COVER SCREW	150	LINE PTOPPER
14	MOTOR HOLDER SCREW	61	IDLE GEAR (E)	106	L/S PLATE	151	R/S PLATE SCREW (A)
15	GEAR SHAFT	62	IDLE GEAR (E) O RING	107	MECHANICAL BRAKE KNOB WASHER (A)	152	R/S PLATE SCREW (B)
16	GEAR SHAFT COLLAR	63	IDLE GEAR (E) BALL BEARING	108	MECHANICAL BRAKE KNOB WASHER (B)	153	R/S PLATE SCREW (C)
17	GEAR SHAFT WASHER	64	IDLE GEAR (E) COLLAR	109	MECHANICAL BRAKE KNOB WASHER (C)	154	DRAG SPRING WASHER
18	GEAR SHAFT RETAINER	65	SET PLATE (B)	110	MECHANICAL BRAKE KNOB WASHER (D)	155	DRAG HOLDER
19	SPOOL PLATE BALL BEARING	66	SET PLATE (B) SCREW	111	CODE COVER	156	DRAG HOLDER LEAF SPRING
20	SPOOL PLATE WASHER	67	SPOOL SHAFT BALL BEARING (B)	112	L/S PLATE SCREW (A)	157	HANDLE WASHER
21	SPOOL	68	SET PLATE SCREW (A)	113	L/S PLATE SCREW (B)	158	STAR DRAG
22	SPOOL SHAFT BALL BEARING (A)	69	SET PLATE SCREW (B)	114	CODE COVER	159	HANDLE COLLAR
23	SPOOL SHAFT GEAR WASHER	70	LEVELWIND	115	SLIDE PLATE	160	HANDLE
24	SPOOL SHAFT GEAR (B)	71	WORM SHIELD	116	CLUTCH PLATE	161	HANDLE NUT
25	SPOOL SHAFT GEAR RETAINER	72	WORM SHAFT	117	PINION	162	HANDLE LOCK PLATE
26	SPOOL SHAFT	73	WORM SHAFT COLLAR	118	CLUTCH PLATE SPRING	163	HANDLE LOCK PLATE SCREW
27	SPOOL SHAFT GEAR (A)	74	WORM SHAFT WASHER	119	STOPPER PIN	164	CONNECTOR CAP
28	SPOOL SHAFT GEAR (A) RETAINER	75	WORM SHAFT RETAINER	120	STOPPER SPRING	165	CODE
29	SPOOL GEAR BALL BEARING	76	PAWL	121	STOPPER	166	FERRITE CORE
30	SPOOL GEAR	77	PAWL WASHER	122	RATCHET	167	JOG POWER LEVER RING
31	SPOOL PLATE	78	LEVELWIND POST COLLAR	123	RATCHET WASHER	168	MOTOR GEAR (A) SPRING WASHER
32	SPOOL PLATE SCREW	79	LEVELWIND POST	124	DRIVE GEAR WASHER	169	IC MODULE COVER PLATE
33	SPOOL SHAFT WASHER	80	LEVELWIND POST COLLAR	125	GEAR SHAFT O RING	170	MOTOR WASHER
34	MOTOR GEAR BALL BEARING	81	IC MODULE	126	DRIVE GEAR	171	MOTOR O RING (B)
35	MOTOR GEAR (B)	82	IC MODULE SCREW	127	DRAG WASHER	200	REEL CASE
36	MOTOR GEAR (B) WASHER	83	IC MODULE POST	128	DRAG DISC WASHER	201	CRAMP PLATE
37	SET PLATE (A)	84	IC MODULE POST RETAINER	129	DRAG LIP WASHER	202	CRAMP SCREW
38	IDLE GEAR (A) COLLAR	85	SENSOR SCREW (A)	130	DRAG PACKING	203	CRAMP SCREW WASHER
39	IDLE GEAR (A)	86	SENSOR SCREW (B)	131	DRAG O RING	204	CRAMP SCREW NUT
40	IDLE GEAR (A) WASHER	87	FINGER COVER	132	DRAG COLLAR	205	CRAMP PLATE NUT (SHORT)
41	IDLE GEAR (A) SCREW	88	LINE GUARD	133	HANDLE BALL BEARING	206	CRAMP PLATE NUT (LONG)
42	IDLE GEAR (B) COLLAR	89	LINE GUARD SCREW	134	R/S COVER	207	LINE THROUGH
43	IDLE GEAR (B)	90	FINGER COVER SCREW (A)	135	R/S COVER BALL BEARING	208	DRIVER
44	IDLE GEAR (B) WASHER	91	FINGER COVER SCREW (B)	136	R/S COVER BALL BEARING SCREW	209	MANUAL
45	IDLE GEAR (B) SCREW	92	JOG POWER LEVER (A)	137	R/S COVER SCREW (A)		

There may sometimes be a difference between the purchased reel and the Dismantled Parts Chart or the parts list above due to the adjustment process etc. We appreciate your understanding.