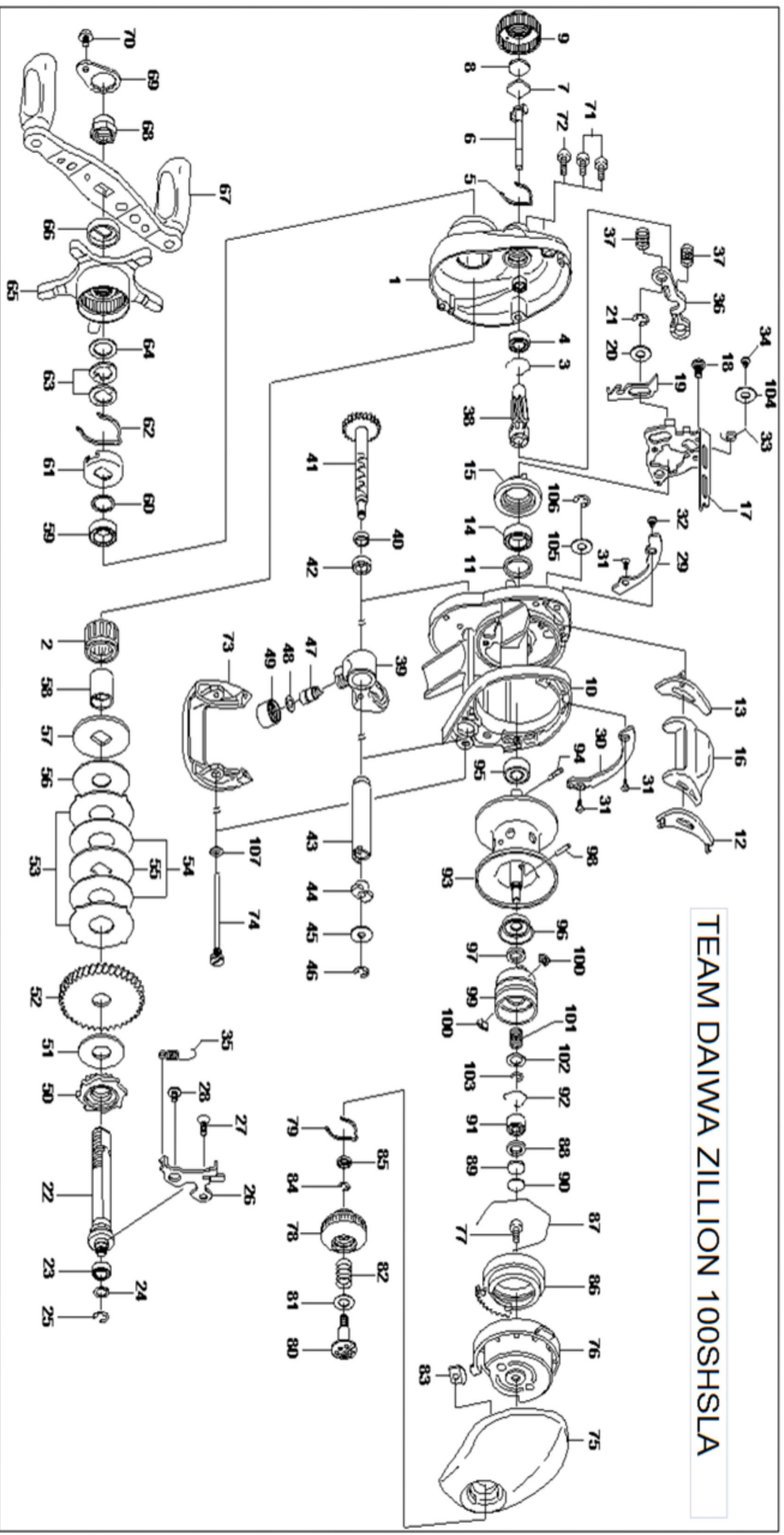




# ZILLION 100SHSLA

Please quote by part number, not key number when ordering  
spares@daiwaaustralia.com.au PH: 02 8644 8644

## TEAM DAIWA ZILLION 100SHSLA





Please quote by part number, not key number when ordering  
 spares@daiwaaustralia.com.au PH: 02 8644 8644

# ZILLION 100SHSLA

Key No.	Part Number	Description	Key No.	Part Number	Description
1	6H207301	Left side plate	50	6G802201	Clutch wheel
2	6G819801	Roller clutch	51	6G863501	Drive shaft washer
3	6B421601	Bearing retainer (A)	52	6H207601	Drive gear
4	6G538001	Ball bearing (A)	53	6G791301	Eared washer
5	6G894401	Click leaf spring (A)	54	6G791402	Drag washer (A)
6	6F744101	Pinion shaft	55	6F904902	Key washer (A)
7	6B175401	Spacer (A)	56	6H118401	Drag washer (B)
8	6B175503	Spacer (B)	57	6G358501	Key washer (B)
9	6F833909	Cast control cap	58	6G011401	Gear shaft collar
10	6H207401	Frame assembly	59	6G431001	Ball bearing (E)
11	6F834701	Collar	60	6B553801	Bearing washer
12	6G260702	Spacer (C)	61	6F028201	Click leaf spring holder
13	6G260802	Spacer (D)	62	6F032401	Click leaf spring (B)
14	6G431002	Ball bearing (B)	63	61508901	Drag spring washer
15	6F997401	Clutch cam	64	63737810	Spacing sleeve
16	6G260902	Clutch lever	65	6H026502	Star drag
17	6G801701	Clutch cam plate	66	6F850402	Handle collar
18	6G009701	Clutch cam screw	67	6H206801	Handle assembly
19	6G801801	Clutch trip plate	68	6G793304	Handle nut
20	63716900	Washer (A)	69	60403206	Handle nut plate
21	63201402	Retainer (A)	70	63538301	Handle nut plate screw
22	6G790202	Drive shaft	71	6G040805	Left side plate screw (A)
23	6G466201	Ball bearing (C)	72	6G040801	Left side plate screw (B)
24	6G755200	Washer (B)	73	6G261506	Front plate
25	63205901	Retainer (B)	74	6G011702	Stabilizer bar
26	6G801901	Drive shaft retainer	75	6G261615	Right side plate
27	6E134503	Drive shaft retainer screw (A)	76	6G261802	Right set plate
28	6G850401	Drive shaft retainer screw (B)	77	63510906	Right set plate screw
29	6G794114	Plate (A)	78	6F577801	Brake adjusting knob
30	6G795714	Plate (B)	79	6F051701	Brake click spring
31	6G318503	Screw (A)	80	6G793501	Set plate screw
32	6G611501	Screw (B)	81	6G793602	Washer (C)
33	6G802001	Clutch cam spring	82	6E167101	Set plate spring
34	6F505701	Screw (C)	83	6F613401	Brake dial retainer (A)
35	6G790501	Clutch trip plate spring	84	6B339801	Brake dial retainer (B)
36	6F998201	Yoke	85	6F637701	Brake dial collar
37	6G850301	Yoke spring	86	6F717702	Magnet holder
38	6H207501	Pinion gear	87	6B543201	Magnet holder retainer
39	6G410301	Line guide	88	6F574303	Spacer (E)
40	6G010701	Worm shaft holder (A)	89	63757411	Spacer (F)
41	6G790701	Worm shaft assembly	90	63757406	Spacer (G)
42	6G466201	Ball bearing (D)	91	6G431101	Ball bearing (F)
43	6F836502	Level wind guard	92	6E219701	Bearing retainer (B)
44	6B715601	Worm shaft holder (B)	93~103	6Z018939	Spool assembly
45	6F655500	Worm shaft washer	104	6F440201	Washer (D)
46	63205901	Worm shaft retainer	105	6G850701	Washer (E)
47	61214212	Line guide pawl	106	6.32E+07	Retainer (C)
48	63731303	Line guide washer	107	6G684801	Washer (F)
49	63424807	Pawl cap			