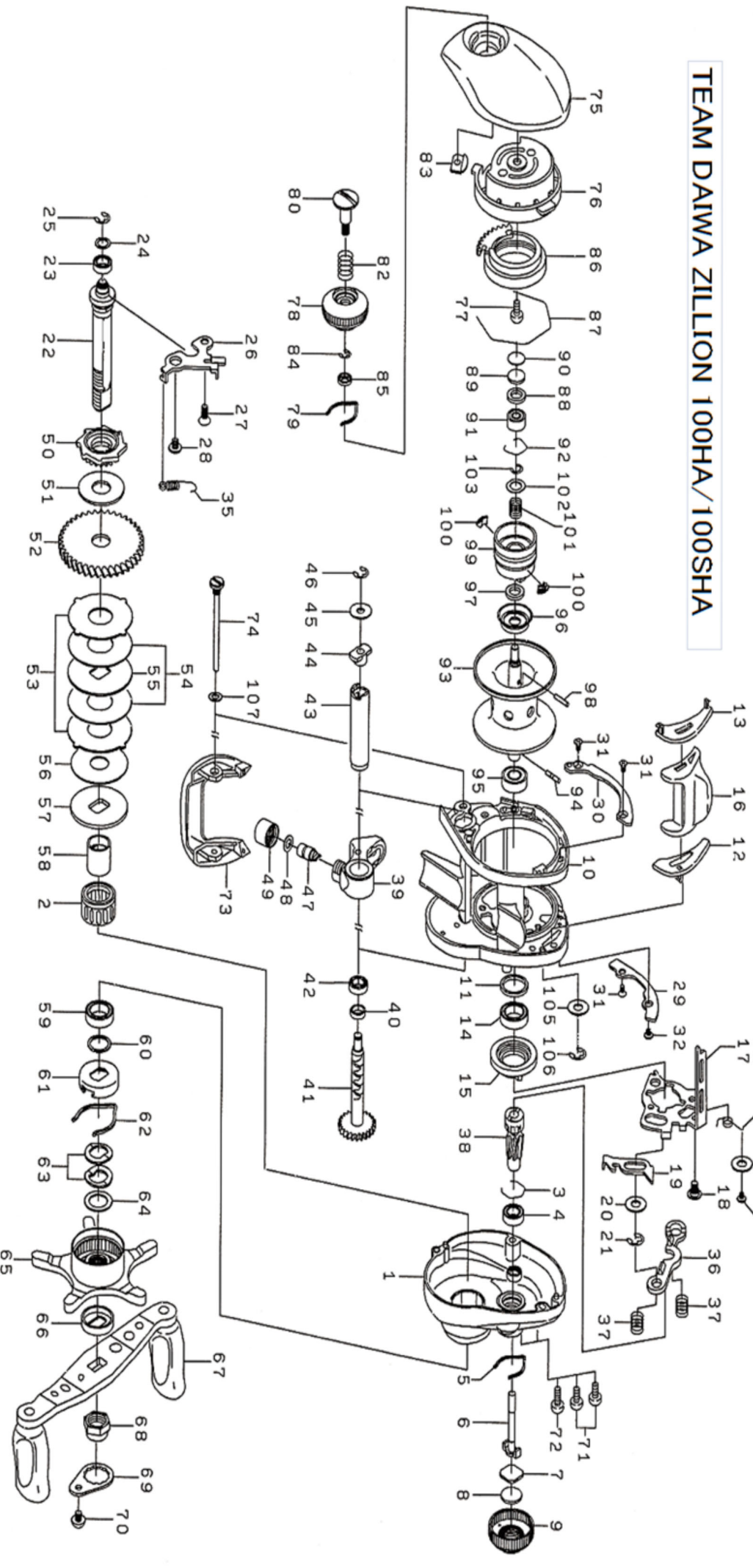




ZILLION 100HA

Please quote by part number, not key number when ordering
spares@daiwaaustralia.com.au PH: 02 8644 8644

TEAM DAIWA ZILLION 100HA/100SHA





Please quote by part number, not key number when ordering

spares@daiwaaustralia.com.au PH: 02 8644 8644

ZILLION 100HA

Key No.	Part Number	Description	Key No.	Part Number	Description
1	6G884301	Right side plate	49	63424807	Pawl cap
2	6G819801	Roller clutch	50	6G790901	Clutch wheel
3	6B421601	Bearing retainer (A)	51	6G863501	Drive shaft washer
4	6G538001	Ball bearing (A)	52	6G791201	Drive gear
5	6G894401	Click leaf spring (A)	53	6G791301	Eared washer
6	6F744101	Pinion shaft	54	6G791401	Drag washer (A)
7	6B175401	Spacer (A)	55	6F904902	Key washer (A)
8	6B175503	Spacer (B)	56	6G711101	Drag washer (B)
9	6F833907	Cast control cap	57	6G358501	Key washer (B)
10	6G789003	Frame assembly	58	6G011401	Gear shaft collar
11	6F834701	Collar	59	6B861703	Ball bearing (D)
12	6G009302	Spacer (C)	60	6B553801	Bearing washer
13	6G009402	Spacer (D)	61	6F028201	Click leaf spring holder
14	6G431002	Ball bearing (B)	62	6F032401	Click leaf spring (B)
15	6F793501	Clutch cam	63	61508901	Drag spring washer
16	6G009501	Clutch lever	64	63737810	Spacing sleeve
17	6G790001	Clutch cam plate	65	6G792503	Star drag
18	6G009701	Clutch cam screw	66	6F850402	Handle collar
19	6G790101	Clutch trip plate	67	6G884501	Handle assembly
20	63716906	Washer (A)	68	6G793301	Handle nut
21	63201402	Retainer (A)	69	60403209	Handle nut plate
22	6G790201	Drive shaft	70	63538301	Handle nut plate screw
23	6G466206	BALL BEARING	71	6G040805	Right side plate screw (A)
24	6G755201	Washer (B)	72	6G040801	Right side plate screw (B)
25	63205901	Retainer (B)	73	6G011605	Front plate
26	6G790301	Drive shaft retainer	74	6G011702	Stabilizer bar
27	6E134503	Drive shaft retainer screw (A)	75	6G036814	Left side plate
28	6G850401	Drive shaft retainer screw (B)	76	6G011902	Left set plate
29	6G794105	Plate (A)	77	63510906	Left set plate screw
30	6G795705	Plate (B)	78	6F577802	Brake adjusting knob
31	6G318503	Screw (A)	79	6F051701	Brake click spring
32	6G611501	Screw (B)	80	6F577901	Set plate screw
33	6G790401	Clutch cam spring	82	6E167101	Set plate spring
34	6F505701	Screw (C)	83	6F613401	Brake dial retainer (A)
35	6G790501	Clutch trip plate spring	84	6B339801	Brake dial retainer (B)
36	6F794801	Yoke	85	6F637701	Brake dial collar
37	6G850301	Yoke spring	86	6F717702	Magnet holder
38	6G884401	Pinion gear	87	6B543201	Magnet holder retainer
39	6G410301	Line guide	88	6F574303	Spacer (E)
40	6G010701	Worm shaft holder (A)	89	63757411	Spacer (F)
41	6G790701	Worm shaft assembly	90	63757404	Spacer (G)
42	6F648301	Worm shaft holder (B)	91	6G498508	Ball bearing (E)
43	6F836502	Level wind guard	92	6E219701	Bearing retainer (B)
44	6B715601	Worm shaft holder (C)	93~103	6Z017897	Spool assembly
45	6F655501	Worm shaft washer	104	6F440201	Washer (C)
46	63205901	Worm shaft retainer	105	6G850701	Washer (D)
47	61214212	Line guide pawl	106	63205901	Retainer (C)
48	63731303	Line guide washer	107	6G684801	Washer (E)