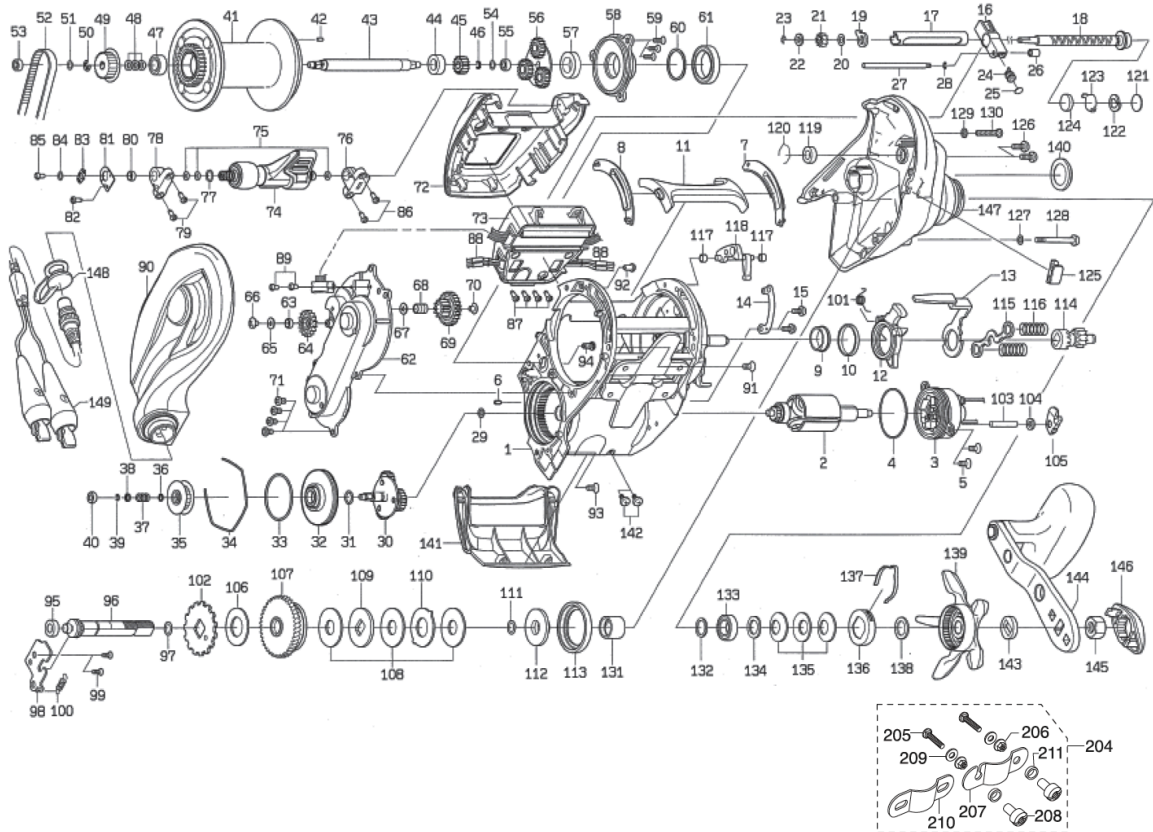



Parts List



TANACOM 500(A)

 *The parts within the dashed frame are sold separately. (These are not enclosed.)

| No. | Parts Name | No. | Parts Name | No. | Parts Name | No. | Parts Name |
|-----|------------------------------|-----|----------------------------------|-----|--------------------------------|-----|-------------------------------------|
| 1 | FRAME | 41 | SPOOL | 81 | POWER LEVER PLATE | 121 | MECHANICAL BRAKE KNOB WASHER (A) |
| 2 | MOTOR | 42 | SPOOL PIN | 82 | POWER LEVER PLATE SCREW(A) | 122 | MECHANICAL BRAKE KNOB SPRING WASHER |
| 3 | MOTOR HOLDER | 43 | SPOOL SHAFT | 83 | POWER LEVER PLATE CLICK SPRING | 123 | MECHANICAL BRAKE KNOB WASHER (B) |
| 4 | MOTOR HOLDER O RING | 44 | SPOOL SHAFT BEARING | 84 | POWER LEVER PLATE WASHER | 124 | MECHANICAL BRAKE KNOB WASHER (C) |
| 5 | MOTOR HOLDER SCREW | 45 | SPOOL SHAFT GEAR(A) | 85 | POWER LEVER PLATE SCREW(B) | 125 | LINE STOPPER |
| 6 | MOTOR HOLDER PIN | 46 | SPOOL SHAFT GEAR(A)RETAINER | 86 | POWER LEVER HOLDER SCREW | 126 | R/S PLATE SCREW (A) |
| 7 | CLUTCH LEVER PLATE(R) | 47 | SPOOL SHAFT BALLBEARING(A) | 87 | IC MODULE COVER SCREW | 127 | R/S PLATE SCREW (B) WASHER |
| 8 | CLUTCH LEVER PLATE(L) | 48 | SPOOL SHAFT GEAR(B)SPRING WASHER | 88 | CODE COVER | 128 | R/S PLATE SCREW (B) |
| 9 | CLUTCH CAM BEARING | 49 | SPOOL SHAFT GEAR(B) | 89 | SETPLATE SCREW(B) | 129 | R/S PLATE SCREW (C) WASHER |
| 10 | CLUTCH CAM BEARING COLLAR | 50 | SPOOL SHAFT GEAR(B)RETAINER | 90 | L/S PLATE | 130 | R/S PLATE SCREW (C) |
| 11 | CLUTCH LEVER | 51 | SPOOL SHAFT WASHER | 91 | FRAME SCREW(A) | 131 | DRAG COLLAR |
| 12 | CLUTCH CAM | 52 | MOTOR GEAR BELT | 92 | L/S PLATE SCREW(A) | 132 | HANDLE BEARING WASHER(A) |
| 13 | CLUTCH CAM PLATE | 53 | SPOOL SHAFT BALLBEARING(B) | 93 | FRAME SCREW(B) | 133 | HANDLE BALL BEARING |
| 14 | CLUTCH CAM HOLD PLATE | 54 | SPOOL GEAR WASHER | 94 | L/S PLATE SCREW(B) | 134 | HANDLE BEARING WASHER(B) |
| 15 | CLUTCH CAM HOLD PLATE SCREW | 55 | SPOOL GEAR BALLBEARING | 95 | GEAR SHAFT COLLAR | 135 | DRAG SPRING WASHER |
| 16 | LEVEL WIND | 56 | SPOOL GEAR | 96 | GEAR SHAFT | 136 | DRAG HOLDER |
| 17 | WORM SHIELD | 57 | SPOOL PLATE BEARING | 97 | GEAR SHAFT O RING | 137 | DRAG LEAF SPRING |
| 18 | WORM SHAFT | 58 | SPOOL PLATE | 98 | GEAR SHAFT PLATE | 138 | STAR DRAG WASHER |
| 19 | WORM SHAFT COLLAR | 59 | SPOOL PLATE SCREW | 99 | GEAR SHAFT PLATE SCREW | 139 | STAR DRAG |
| 20 | WORM SHAFT WASHER(A) | 60 | SPOOL PLATE WASHER | 100 | KICKLEVER SPRING | 140 | MECHANICAL BRAKE COVER |
| 21 | WORM SHAFT GEAR | 61 | SPOOL PLATE BALLBEARING(B) | 101 | CLUTCH CAM SPRING | 141 | FINGER COVER |
| 22 | WORM SHAFT WASHER(B) | 62 | SETPLATE | 102 | RATCHET | 142 | FINGER COVER SCREW |
| 23 | WORM SHAFT RETAINER | 63 | IDLE GEAR (A) COLLAR | 103 | STOPPER PIN | 143 | HANDLE COLLAR |
| 24 | PAWL | 64 | IDLE GEAR (A) | 104 | STOPPER WASHER | 144 | HANDLE |
| 25 | PAWL WASHER | 65 | IDLE GEAR (A) WASHER | 105 | STOPPER | 145 | HANDLE NUT |
| 26 | LEVELWIND POST COLLAR | 66 | IDLE GEAR (A) SCREW | 106 | DRIVE GEAR WASHER | 146 | HANDLE CAP |
| 27 | LEVELWIND POST | 67 | IDLE GEAR (B) WASHER | 107 | DRIVE GEAR | 147 | R/S PLATE |
| 28 | LEVELWIND POST RETAINER | 68 | IDLE GEAR (B) COLLAR | 108 | DRAG WASHER | 148 | CONNECTOR CAP |
| 29 | MOTOR GEAR(A) WASHER | 69 | IDLE GEAR (B) | 109 | DRAG DISC WASHER | 149 | CODE |
| 30 | MOTOR GEAR(A) | 70 | IDLE GEAR (B) SCREW | 110 | DRAG LIP WASHER | 205 | CRAMP SHAFT SCREW |
| 31 | MOTOR GEAR(A) O RING | 71 | SETPLATE SCREW(A) | 111 | GEAR SHAFT O RING | 206 | CRAMP SHAFT NUT |
| 32 | MOTOR CASE PLATE(A) | 72 | IC MODULE COVER | 112 | DRAG DISC COLLAR | 207 | CRAMP PLATE |
| 33 | MOTOR CASE PLATE(A) O RING | 73 | IC MODULE | 113 | DRAG PACKKING | 208 | CRAMP PLATE NUT |
| 34 | MOTOR CASE RING | 74 | POWER LEVER | 114 | PINION | 209 | CRAMP WASHER |
| 35 | MOTOR GEAR(B) | 75 | POWER LEVER O RING | 115 | CLUTCH PLATE | 210 | CRAMP PLATE |
| 36 | MOTOR GEAR(B) WASHER | 76 | POWER LEVER HOLDER(R) | 116 | CLUTCH SPRING | 211 | CRAMP COLLAR |
| 37 | MOTOR GEAR(B) SPRING WASHER | 77 | POWER LEVER WASHER | 117 | CLUTCH CAM LEVER COLLAR | | |
| 38 | MOTOR GEAR(B) BEARING WASHER | 78 | POWER LEVER HOLDER(L) | 118 | CLUTCH CAM LEVER | | |
| 39 | MOTOR GEAR(B) RETAINER | 79 | POWER LEVER HOLDER SCREW | 119 | R/S BEARING | | |
| 40 | MOTOR GEAR(B) BEARING | 80 | POWER LEVER HOLDER COLLAR | 120 | R/S BEARING RING | | |

There may sometimes be a difference between the purchased reel and the Dismantled Parts Chart or the parts list above due to the adjustment process etc. We appreciate your understanding.