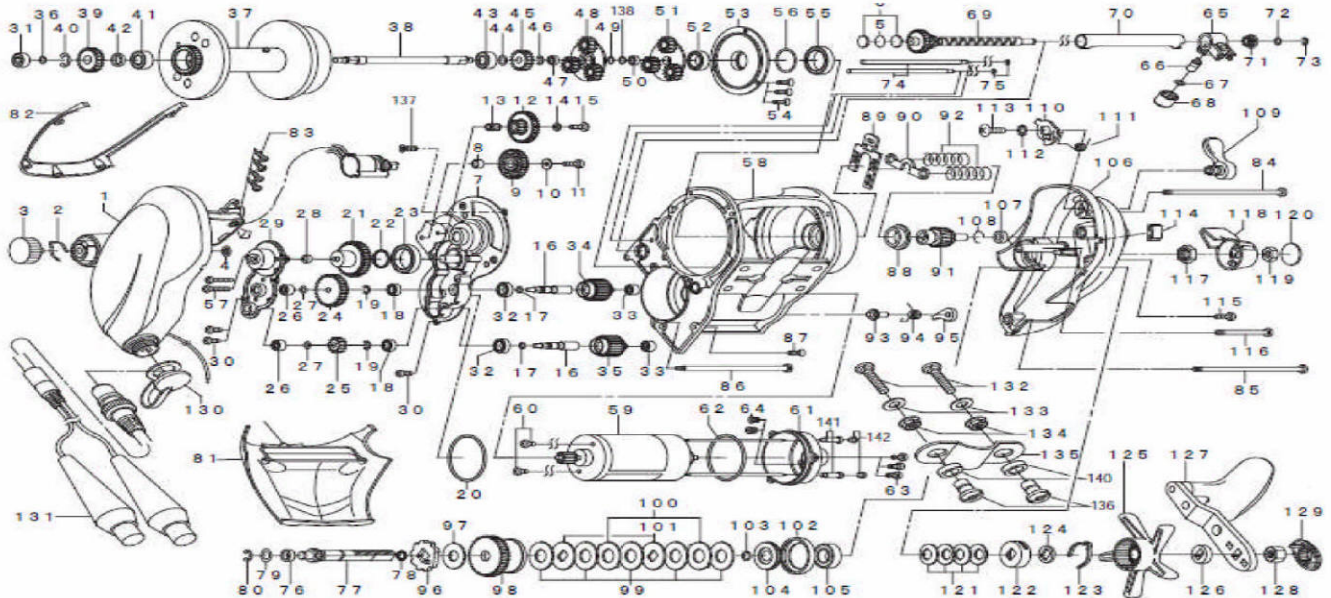


Please order by parts number, not key number
Veuillez indiquer le numéro de la pièce.



ELECTRONIC REEL

SEABORG 1000MT



Key No.	Parts No.	Description	Key No.	Parts No.	Description	Key No.	Parts No.	Description
1	H05-7401	IC MODULE L/S PLATE SET	49	B41-1701	MOTOR GEAR A WASHER	97	374-6604	DRIVE SHAFT WASHER B
2	E03-3201	BRAKE CLICK SPRING	50	G46-9004	MOTOR GEAR (B) BALL BEARING	98	G67-7901	DRIVE GEAR
3	G67-3101	BRAKE ADJ KNOB	51	G67-5801	MOTOR GEAR B	99	B36-0209	EARED WASHER
4	320-9702	MECHANICAL BRAKE KNOB RET	52	G15-6801	SPOOL PLATE BALL BEARING (A)	100	372-3833	DRAG LIP WASHER
5	B17-5503	MECHANICAL BRAKE WASHER A	53	G67-6001	SPOOL PLATE	101	B36-0303	DRAG DISC WASHER
6	F67-3802	MECHANICAL BRAKE WASHER B	54	E13-4505	SPOOL PLATE SCREW	102	F81-7001	DRAG COLLAR SHIELD
7	G67-9601	SET PLATE A	55	E29-2701	SPOOL PLATE BALL BEARING (B)	103	F65-7801	DRAG O RING
8	F57-3101	IDLE GEAR (A) COLLAR	56	F68-2600	SPOOL PLATE BALL BEARING (B) WASHER	104	G67-8001	DRIVE SHAFT COLLAR
9	F59-2101	IDLE GEAR (A)	57	G78-5801	SET PLATE SCREW (B)	105	G43-9402	HANDLE BALL BEARING
10	F57-1902	IDLE GEAR (A) WASHER	58	G69-1701	FRAME	106	G69-2001	R/S PLATE
11	F84-8401	IDLE GEAR (A) SCREW	59	G67-6201	MOTOR	107	E35-1501	PINION GEAR BUSHING (B)
12	G67-3301	IDLE GEAR (B)	60	F91-4401	MOTOR SCREW	108	E21-9701	PINION GEAR RING
13	G07-6501	IDLE GEAR (B) COLLAR	61	G67-6501	MOTOR HOLDER	109	F46-9016	CLUTCH LEVER
14	B55-4301	IDLE GEAR (B) WASHER	62	G15-8801	MOTOR HOLDER O RING	110	F59-7901	CLUTCH CAM
15	351-1805	IDLE GEAR (B) SCREW	63	351-0905	MOTOR HOLDER SCREW	111	F59-8201	CLUTCH CAM SPRING
16	G67-3401	MOTOR WASHER	64	G17-3401	CORD COVER	112	160-8001	CLUTCH CAM WASHER
17	G67-3501	MOTOR GEAR SHAFT O RING	65	F59-6004	LINE GUIDE	113	353-8207	CLUTCH CAM SCREW
18	B35-8605	IDLE GEAR BALL BEARING	66	122-0602	LINE GUIDE PAWL	114	E28-6004	LINE HOLDER
19	320-1402	MOTOR GEAR SHAFT RET	67	F95-0200	LEVELWIND WASHER	115	351-6401	RS PLATE SCREW (C)
20	G15-8601	MOTOR O RING	68	E35-4101	LEVELWIND NUT	116	G69-2201	RS PLATE SCREW (D)
21	G67-3801	IDLE GEAR (C)	69	G67-6801	WORM SHAFT	117	G13-9601	POWER LEVER NUT (A)
22	G67-2401	IDLE GEAR (C) O RING	70	G67-7101	WORM SHIELD	118	F86-2301	POWER LEVER
23	E29-2701	IDLE GEAR(C) BALL BEARING(A)	71	F46-7201	WORM SHAFT BUSHING	119	342-4004	POWER LEVER NUT (B)
24	G67-3901	IDLE GEAR (D)	72	B41-1706	WORM SHAFT WASHER	120	F86-2801	POWER LEVER COVER
25	G67-4001	IDLE GEAR (E)	73	320-5801	WORM SHAFT RETAINER	121	F67-3801	DRAG SPRING WASHER
26	E08-8005	IDLE GEAR(D) BALL BEARING	74	G36-2901	LEVELWIND POST	122	F47-0002	DRAG HOLDER
27	F77-4603	IDLE GEAR WASHER	75	B86-4101	LEVELWIND POST RET	123	B74-7702	DRAG HOLDER LEAF SPRING
28	G07-7201	IDLE GEAR (C) BALL BEARING (B)	76	G08-1901	DRIVE SHAFT BUSHING	124	F47-0101	HANDLE WASHER
29	G67-9101	SET PLATE B	77	G67-7301	DRIVE SHAFT	125	F65-0424	STAR DRAG
30	351-0905	SPOOL PLATE SCREW A	78	F65-7801	DRIVE SHAFT O RING	126	F47-0303	HANDLE COLLAR
31	637-2102	SPOOL SHAFT BALL BEARING	79	375-5801	DRIVE SHAFT WASHER	127	G67-8101	HANDLE
32	F01-8401	MOTOR GEAR SHAFT BALL BEARING	80	320-7601	DRIVE SHAFT RET	128	B86-2102	HANDLE NUT
33	E08-8005	MOTOR GEAR BALL BEARING	81	G69-1302	FINGER GUARD	129	F47-1207	HANDLE CAP
34	G67-4101	MOTOR GEAR (HI)	82	G69-1801	IC MODULE COVER	130	F68-1002	CONNECTOR CAP
35	G67-4401	MOTOR GEAR (LOW)	83	E00-4301	IC MODULE COVER SCREW	131	F59-8405	ELECTRIC POWER CORD
36	B41-1700	SPOOL SHAFT GEAR WASHER	84	G69-1901	R/S PLATE SCREW (A)	132	F18-7601	CLAMP SCREW
37	G67-4501	SPOOL	85	F58-6301	R/S PLATE SCREW (B)	133	B93-7802	CLAMP SCREW WASHER
38	G67-4901	SPOOL SHAFT	86	G67-7401	FRAME SCREW (A)	134	F18-7801	CLAMP SCREW NUT
39	G67-5001	SPOOL SHAFT GEAR	87	E13-4501	FRAME SCREW (B)	135	041-9901	CLAMP PLATE
40	320-1611	SPOOL GEAR RETAINER	88	G67-7501	PINION GEAR BUSHING (A)	136	342-5301	CLAMP PLATE NUT
41	G29-2802	BALL BEARING	89	F59-7001	YOKE PLATE	137	E13-4508	SET PLATE SCREW (C)
42	G67-5101	SPOOL SHAFT GEAR COLLAR	90	E29-0601	YOKE	138	B41-1701	MOTOR GEAR (A) WASHER
43	G53-6001	SPOOL PLATE BALL BEARING(B)	91	G67-7601	PINION GEAR	140	G98-1701	COLLAR
44	375-3002	SPOOL GEAR WASHER	92	G47-3401	CLUTCH PLATE SPRING	141	F65-7701	MOTOR COVER SCREW
45	G67-5201	SPOOL GEAR	93	F77-3001	ANTI-REVERSE PAWL HOLDER	142	F65-8501	MOTOR COVER SCREW SHIELD
46	320-1402	SPOOL GEAR RET	94	G67-7701	ANTI-REVERSE PAWL SPRING			
47	G28-3802	MOTOR GEAR (A) BALL BEARING	95	F59-7201	ANTI-REVERSE PAWL			
48	G67-5301	MOTOR GEAR A	96	G67-7801	RATCHET			