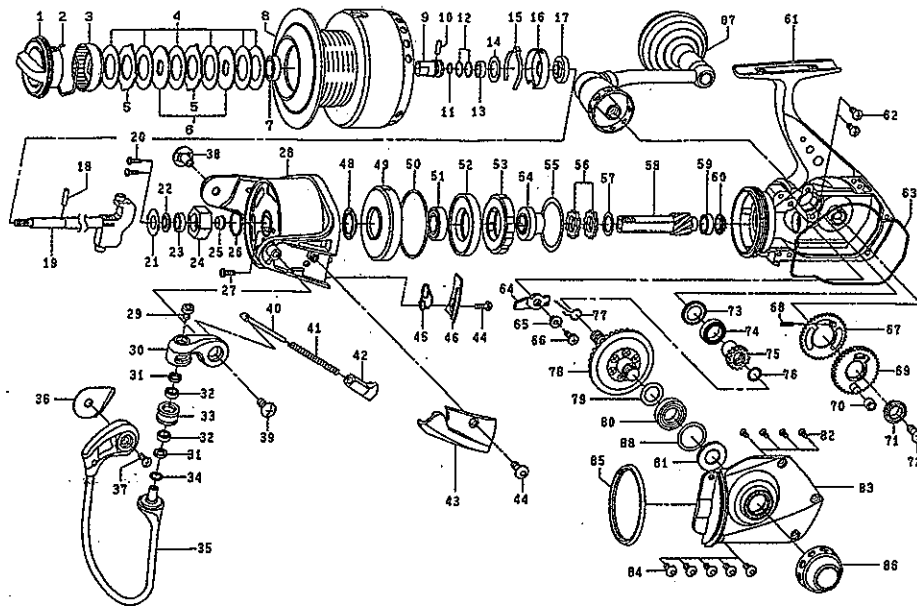


# SALTIGA S-EXTREME 6500Z



Key No.	Parts No.	Parts Name	Key No.	Parts No.	Parts Name
1	6H276901	Drag knob	45	6G337601	Rotor brake spring
2	6F710001	Drag washer retainer	46	6G337805	Rotor brake spring cover
3	6G165602	Drag knob click plate	48	6G338301	Packing (C)
4	6H247202	Drag washer	49	6G335901	Roller clutch cover
5	6G165902	Eared washer	50	6G158601	"O" ring (D)
6	6G162702	Key washer	51	6G426301	Ball bearing (E)
7	6G156801	Ball bearing (A)	52	6G335801	Collar (B)
2-8	6H276701	Spool assembly	53	6F765401	Roller clutch
9	6G339201	Spool metal (A)	54	6G335701	Spacing sleeve
10	6G339301	Pin (A)	55	6G158101	Washer (B)
11	6G339101	"O" ring (A)	56	6E262701	Ratchet
12	6G339401	"O" ring (B)	57	63727603	Washer (C)
13	6G314901	Ball bearing (B)	58	6G383501	Pinion gear
14	6G341501	Spool washer	59	6B861703	Ball bearing (F)
15	6G341401	Spool click leaf spring	60	6G335501	Collar (C)
16	6G341301	Click leaf spring holder	61	6H276501	Body-assembly
17	6G339001	Spool metal (B)	62	6G716401	Screw (G)
18	6G338901	Pin (B)	63	6G337001	Packing (D)
19	6G335101	Main shaft	64	6G343901	Anti-reverse pawl
20	6E468801	Screw (A)	65	6G336201	Collar (D)
21	6G338801	Plate (A)	66	63516413	Screw (H)
22	6G338701	Packing (A)	67	6G334901	Oscillating gear (A)
23	6G522702	Ball bearing (C)	68	6G157401	Oscillating gear spring
24	6G338601	Rotor nut	69	6G334801	Oscillating gear (B)
25	6G338501	Collar (A)	70	6G335001	Collar (E)
26	6G338401	"O" ring (C)	71	6G343401	Ball bearing (G)
27	6E492001	Screw (B)	72	6G343501	Screw (I)
28	6G337206	Rotor	73	6G156701	Packing (E)
29	6G162201	Screw (C)	74	6G156801	Ball bearing (H)
30	6G160608	Bail arm	75	6G334701	Idle gear
31	6G162001	Packing (B)	76	6G336701	"O" ring (E)
32	6F844901	Ball bearing (D)	77	6G336601	Spring
33	6G162101	Line roller	78	6G383301	Drive gear
34	6E096500	Washer (A)	79	6B270700	Washer (D)
35	6G337901	Bail assembly	80	6G426301	Ball bearing (I)
36	6G338201	Plate (B)	81	6G336901	Packing (F)
37	63516105	Screw (D)	82	6G159901	Screw (J)
38	6G341201	Bail holder nut	83	6G336808	Side cover
39	63521106	Screw (E)	84	6G160101	Screw (K)
40	6G337301	Bail spring shaft	85	6G337101	Brake ring
41	6G418101	Bail spring	86	6G340002	Handle screw cap
42	6G337501	Bail spring holder	87	6H276601	Handle assembly
43	6G337701	Bail spring cover	88	63759801	Washer (E)
44	6G161001	Screw (F)			