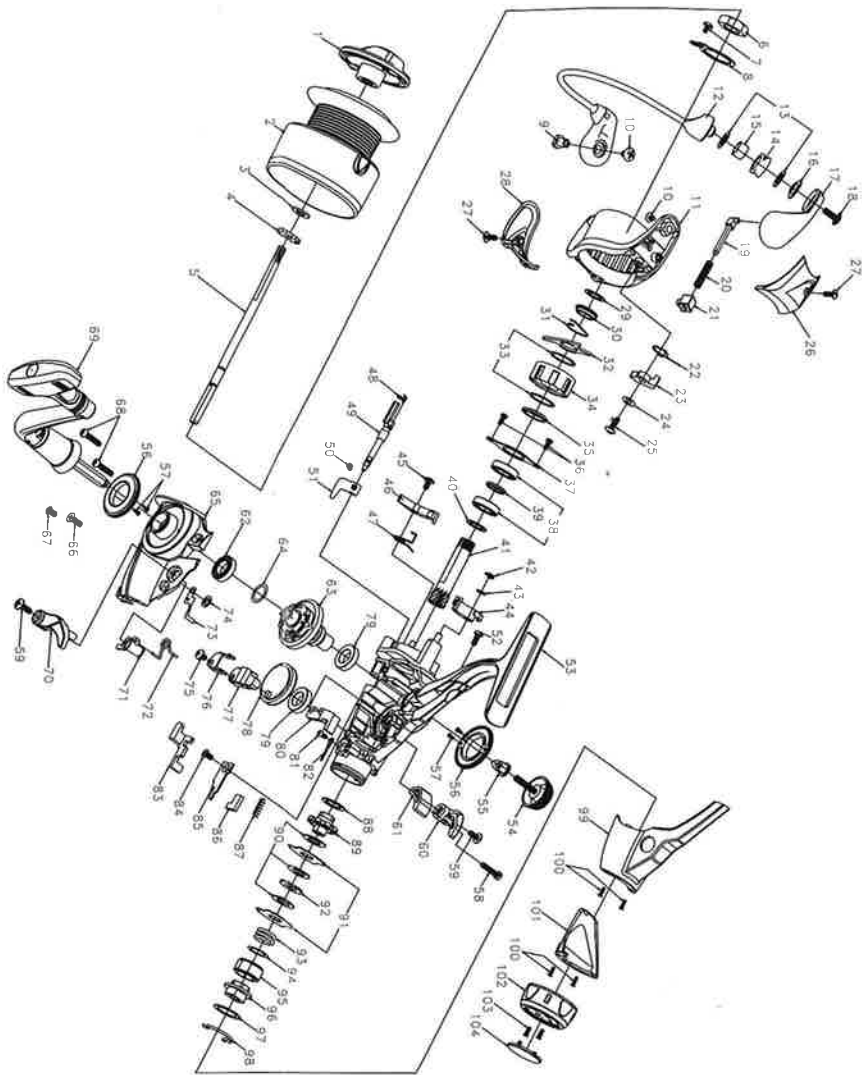




SPINNING REEL

REGAL - X 2500 / 3000BR



Key No.	Parts No.	Parts Name
1	6W7506010	Drag Knob Assembly
2	6W7506010	Spool Assembly
3	6W3394010	Washer
4	6W3394010	Washer
5	6W7507010	Main Shaft
6	6W7508010	Rotor Nut
7	6W3391010	Screw
8	6W3395010	Rotor Nut Holding Plate
9	6W4898010	Bail Holder Nut
10	6W3390010	Screw
11	6W7509010	Rotor
12	6W7510010	Bail Assembly
13	6W4868010	Washer
14	6W3381010	Line Roller
15	6W3482010	Castling
16	6W7521010	Castling
17	6W7521010	Castling
18	6W3389010	Bail Arm
19	6W4428010	Screw
20	6W4429010	Bail Spring Start
21	6W3389010	Bail Spring
22	6W3406010	Bail Spring Holder
23	6W3406020	Bail Trip Lever
24	6W4589010	Washer
25	6W3407030	Screw

Key No.	Parts No.	Parts Name	Designation des pièces
26	6W5041010	Cover (A)	Couvercle (A)
27	6W3404010	Screw	Vis
28	6W5040010	Cover (B)	Couvercle (B)
29	6W7512010	Collar	Collier
30	6W7513010	Collar	Collier
31	6W7514010	Anti-Reverse Paw Spring (A)	Ressort du cliquet anti-retour (A)
32	6W7515010	Anti-Reverse Paw Spring (B)	Ressort du cliquet anti-retour (B)
33	6W7517010	Anti-Reverse Spring	Ressort de rappel anti-retour
34	6W7518010	Roller Clutch	Rondelle de rappel à sigillies
35	6W7519010	Collar	Collier
36	6W7520010	Screw	Vis
37	6W7520010	Bearing Retainer (A)	Rondelle de retenue de roulement à billes (A)
38	6W7521010	Ball Bearing x 2	Roulement à billes
39	6W7522010	Collar	Collier
40	6W7523010	Washer	Pignon
41	6W7524010	Prion Gear	Rondelle de retenue de roulement à billes (B)
42	6W7525010	Bearing Retainer (B)	Collier
43	6W7526010	Collar	Collier
44	6W7527010	Anti-Reverse Paw (A)	Cliquet anti-retour (A)
45	6W7528010	Screw	Vis
46	6W7529010	Anti-Reverse Paw (B)	Cliquet anti-retour (B)
47	6W7530010	Anti-Reverse Paw Spring (B)	Ressort du cliquet anti-retour (B)
48	6W7531010	Anti-Reverse Cam Spring (A)	Ressort de came du cliquet anti-retour (A)
49	6W7532010	Anti-Reverse Cam	Came du cliquet anti-retour
50	6W7533010	Screw	Vis
51	6W7534010	Anti-Reverse Lever	Commande de l'anti-retour
52	6W7535010	Body	Boîtier
53	6W7536010	Handle Screw	Vis de manivelle
54	6W4845010	Collar	Collier
55	6W3447010	Side Ring	Anneau
56	6W7536010	Screw	Vis
57	6W7520010	Screw	Vis
58	6W4915010	Screw	Vis
59	6W7537010	Clutch Lever (A)	Lever d'embrayage (A)
60	6W7538010	Clutch Lever (B)	Lever central d'embrayage
61	6W7539010	Ball Bearing	Roulement à billes
62	6W7540010	Dive Gear	Roche de commande
63	6W7541010	Washer	Rondelle
64	6W7542010	Site Cover	Couvercle
65	6W7543010	Screw	Vis
66	6W7544010	Screw	Vis
67	6W7545010	Screw	Vis
68	6W7546010	Handle Assembly	Manivelle
69	6W7547010	Clutch Lever (B)	Lever d'embrayage (B)
70	6W7548010	Clutch Lever (A)	Lever central d'embrayage
71	6W7549010	Clutch Cam	Ressort de came d'embrayage
72	6W7550010	Clutch Cam Spring	Ressort de cliquet
73	6W4928010	Click leaf Spring	Clips
74	6W3858010	Reliner	Vis
75	6W7551010	Screw	Vis
76	6W7552010	Oscillating Slider	Clipe de coulisse
77	6W7553010	Oscillating Gear	Coulisse
78	6W7554010	Bushing	Roche d'oscillation
79	6W7555010	Pallet	Palette
80	6W4930010	Oscillating Plate	Plaque d'oscillation
81	6W4931010	Screw	Vis
82	6W4931010	Click leaf Spring	Ressort de cliquet
83	6W7556010	Clutch Plate (A)	Plaque d'embrayage (A)
84	6W7557010	Screw	Vis
85	6W7558010	Clutch Plate (B)	Plaque d'embrayage (B)
86	6W7559010	Screw	Vis
87	6W7560010	Clutch Trip Lever	Lever de déclenchement d'embrayage
88	6W4931010	Spring	Ressort
89	6W7561010	Driver Metal	Rondelle de frein
90	6W7562010	Driver Washer	Rondelle de frein
91	6W4940010	Key Washer	Rondelle de frein
92	6W4941010	Key Washer	Rondelle de frein
93	6W4942010	Drag Coil Spring	Ressort de frein
94	6W4943010	Washer	Rondelle
95	6W7563010	Drag Screw	Vis de frein
96	6W7564010	Drag Metal	Douille de frein
97	6W7565010	Washer	Rondelle
98	6W4947010	Reliner	Vis
99	6W7568010	Rear Cover (A)	Couvercle arrière (A)
100	6W7569010	Rear Cover (B)	Couvercle arrière (B)
101	6W7567010	Drag Knob	Bouton de réglage du frein
102	6W4952010	Screw	Vis
103	6W4953010	Cap	Chapeau
104			

Please order by parts number, not key number  
Bitte Best.-Nr. angeben (Nicht "Key"-Nr.)  
Veuillez indiquer le numéro de la pièce (Non "Key" No.)