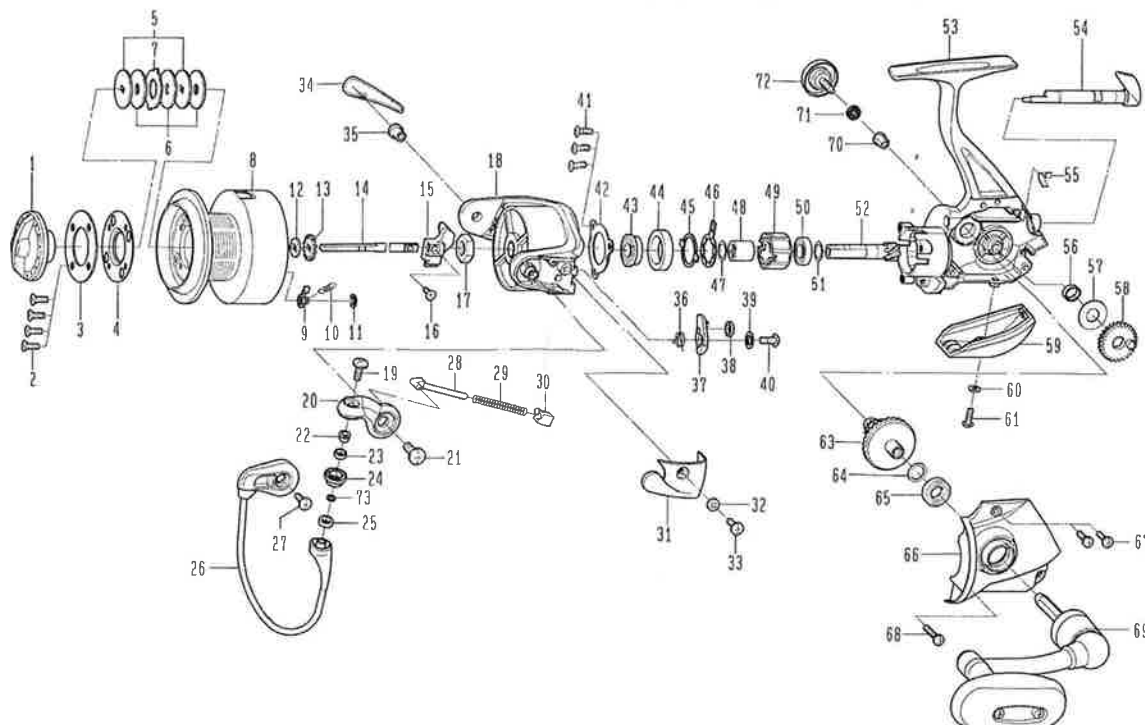


# Exceler Oceano 4500JA



| Key No. | Parts No. | Parts Name             |    |          |                         |
|---------|-----------|------------------------|----|----------|-------------------------|
| 1       | 6H076001  | Drag Knob              | 37 | 6G404701 | Bail Trip Lever         |
| 2       | 6E134508  | Screw (A)              | 38 | 6G194301 | Brake Shoe              |
| 3       | 6G464401  | Plate                  | 39 | 63753000 | Washer (D)              |
| 4       | 6G464301  | Drag Seal              | 40 | 6G193701 | Screw (G)               |
| 5       | 6F094901  | Key Washer             | 41 | 6G332702 | Screw (H)               |
| 6       | 6G651101  | Drag Washer            | 42 | 6G229901 | Bearing Retainer        |
| 7       | 63733603  | Eared Washer           | 43 | 6G482001 | Ball Bearing (B)        |
| 2-11    | 6H075801  | Spool Assembly         | 44 | 6F920602 | Collar (B)              |
| 9       | 6B075304  | Click Pawl             | 45 | 6F641501 | Clutch Cam Retainer     |
| 10      | 6G366501  | Click Spring           | 46 | 6F641401 | Clutch Cam              |
| 11      | 63205901  | Click Retainer         | 47 | 63737814 | Washer (E)              |
| 12      | 6F094701  | Washer (A)             | 48 | 6F732203 | Spacing Sleeve          |
| 13      | 6E462701  | Click Gear             | 49 | 6G314501 | Roller Clutch           |
| 14      | 6G465001  | Main Shaft             | 50 | 6F641101 | Ball Bearing (C)        |
| 15      | 6G025501  | Oscillating Slider     | 51 | 63737814 | Washer (F)              |
| 16      | 63521505  | Screw (B)              | 52 | 6G291301 | Pinion Gear             |
| 17      | 6G123301  | Rotor Nut              | 53 | 6H075701 | Body                    |
| 18      | 6G404509  | Rotor                  | 54 | 6G193103 | Anti-Reverse Lever      |
| 19      | 6G195601  | Screw (C)              | 55 | 6G193301 | Anti-Reverse Cam Spring |
| 20      | 6G194501  | Bail Arm               | 56 | 6F131601 | Collar (C)              |
| 21      | 6G224901  | Screw (D)              | 57 | 6G131700 | Washer (G)              |
| 22      | 6G152501  | Collar (E)             | 58 | 6F747801 | Oscillating Gear        |
| 23      | 6G173801  | Collar (F)             | 59 | 6G230106 | Rear Cover              |
| 24      | 6G461301  | Line Roller            | 60 | 6G256401 | Washer (H)              |
| 25      | 6G047601  | Collar (G)             | 61 | 6G400101 | Screw (I)               |
| 26      | 6G405101  | Bail Assembly          | 63 | 6G025601 | Drive Gear              |
| 27      | 63516101  | Screw (E)              | 64 | 63737800 | Washer (I)              |
| 28      | 6G017502  | Bail Spring Shaft      | 65 | 66316901 | Ball Bearing (E)        |
| 29      | 6G148601  | Bail Spring            | 66 | 6G462903 | Side Cover              |
| 30      | 6G017401  | Bail Spring Holder     | 67 | 6G332902 | Screw (J)               |
| 31      | 6G405004  | Cover (A)              | 68 | 6G333002 | Screw (K)               |
| 32      | 6G256401  | Washer (C)             | 69 | 6G633501 | Handle Assembly         |
| 33      | 6G205101  | Screw (F)              | 70 | 6F721201 | Collar (D)              |
| 34      | 6G484501  | Cover (B)              | 71 | 61608101 | Washer (J)              |
| 35      | 6G195101  | Bail Holder Nut        | 72 | 6F425808 | Handle Screw            |
| 36      | 6G404601  | Bail Trip Lever Spring | 73 | 6F897101 | Washer (K)              |