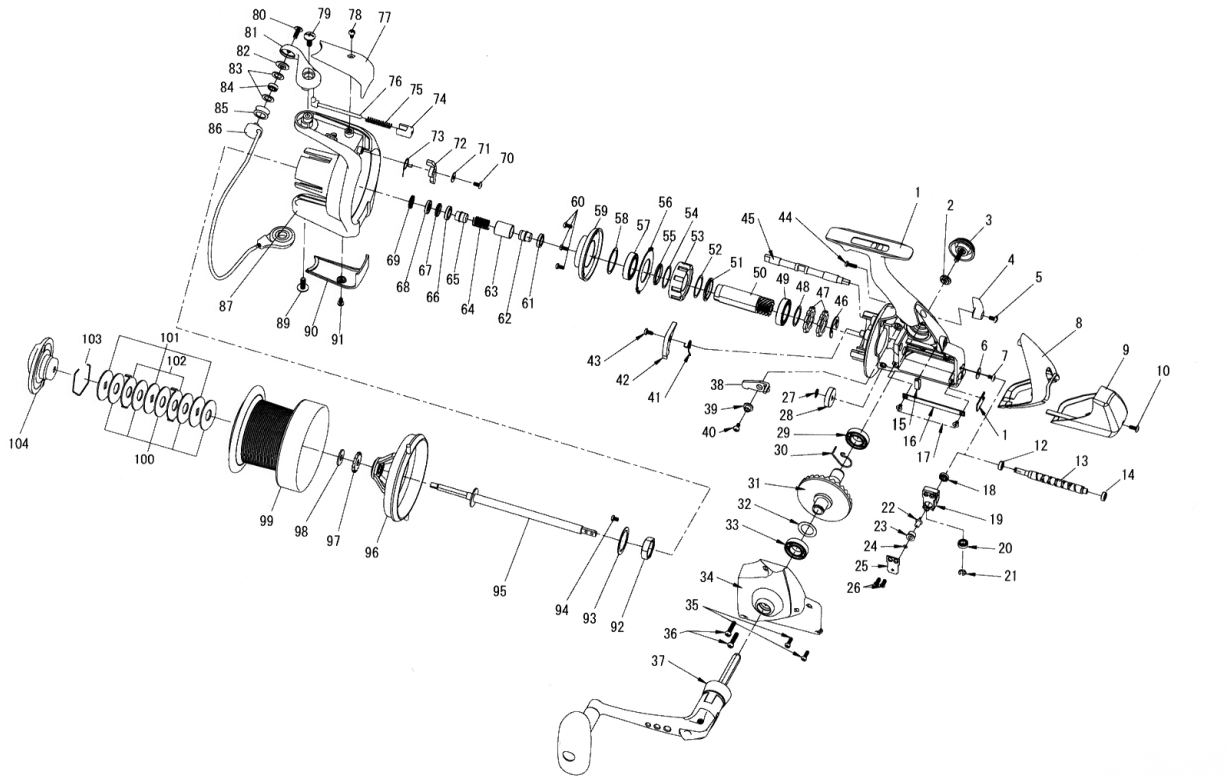


# EMCAST Plus 5500/6000

Please order by parts number, not key number  
Bitte, Best.-Nr. angeben (Nicht "Key"-Nr.)  
Veuillez indiquer le numero de la pièce (Non "Key" No.)



Key No.	Parts No.	Parts Name
1	6W3600010	Body Assembly
2	6W3601010	Washer (A)
3	6W3602010	Handle Screw
4	6W3603010	Anti-Reverse Lever
5	6W3604010	Screw (A)
6	6W3605010	Bearing Retainer (A)
7	6W3606010	Screw (B)
8	6W3607010	Rear Cover (A)
9	6W3608010	Rear Cover (B)
10	6W3609010	Screw (C)
11	6W3610010	Worm Shaft Retainer (A)
12	6W3611010	Bushing
13	6W3612010	Worm Shaft
14	6W3613010	Ball Bearing (A)
15	6W3614010	Anti-Reverse Cam Spring
16	6W3615010	Stabilizer bar
17	6W3616010	Screw (D)
18	6W3617010	Ball Bearing (B)
19	6W3618010	Oscillating Slider
20	6W3619010	Ball Bearing (C)
21	6W3620010	Bearing Retainer (B)
22	6W3621010	Oscillating Pawl
23	6W3622010	Collar (A)
24	6W3623010	Washer (B)
25	6W3624010	Oscillating Slider Cover
26	6W3625010	Screw (E)
27	6W3626010	Worm Shaft Retainer (B)
28	6W3627010	Worm Shaft Gear
29	6W3628010	Ball Bearing (D)
30	6W3629010	Anti-Reverse Pawl Spring (A)
31	6W3630010	Drive Gear
32	6W3631010	Washer (C)
33	6W3628010	Ball Bearing (E)
34	6W3632010	Side Cover
35	6W3633010	Screw (F)
36	6W3634010	Screw (G)
37	6W3635010	Handle Assembly
38	6W3636010	Anti-Reverse Pawl (A)
39	6W3637010	Collar (B)
40	6W3638010	Screw (H)
41	6W3639010	Anti-Reverse Pawl Spring (B)
42	6W3640010	Anti-Reverse Pawl (B)
43	6W3641010	Screw (I)
44	6W3642010	Screw (J)
45	6W3643010	Anti Reverse Cam
46	6W3644010	Pinion Retainer
47	6W3645010	Anti-Reverse Ratchet
48	6W3646010	Washer (D)
49	6W3647010	Ball Bearing (F)
50	6W3648010	Pinion Gear
51	6W3649010	Collar (C)
52	6W3650010	Washer (E)
53	6W3651010	Roller Clutch
54	6W3652010	Washer (F)
55	6W3653010	Collar (D)
56	6W3654010	Bearing Retainer (A)
57	6W3647010	Ball Bearing (G)
58	6W3655010	Washer (G)
59	6W3656010	Bearing Retainer (B)
60	6W3657010	Screw (K)
61	6W3658010	Ball Bearing (H)
62	6W3659010	Collar (E)
63	6W3660010	Spacing Sleeve
64	6W3661010	Main Shaft Spring (A)
65	6W3662010	Collar (F)
66	6W3658010	Ball Bearing (I)
67	6W3663010	Washer (H)
68	6W3664010	Washer (I)
69	6W3665010	Main Shaft Spring (B)
70	6W3666010	Screw (L)
71	6W3118010	Washer (J)
72	6W3668010	Bail Trip Lever
73	6W3669010	Bail Trip Lever Spring
74	6W3670010	Bail Spring Holder
75	6W3671010	Bail Spring
76	6W3672010	Bail Spring Shaft
77	6W3673010	Cover (A)
78	6W3674010	Screw (M)
79	6W3675010	Screw (N)
80	6W3676010	Screw (O)
81	6W3677010	Bail Arm
82	6W3062010	Collar (G)
83	6W3061010	Washer (K)
84	6W3680010	Ball Bearing (J)
85	6W3681010	Line Roller
86	6W3682010	Bail Assembly
87	6W3683010	Rotor
89	6W3684010	Screw (P)
90	6W3685010	Cover (B)
91	6W3686010	Screw (Q)
92	6W3687010	Rotor Nut
93	6W3688010	Rotor Nut Holding Plate
94	6W3689010	Screw (R)
95	6W3690010	Main Shaft
96	6W3691010	Line Guard
97	6W3692010	Click Gear
98	6W3693010	Washer (L)
99-103	6W3694020	Spool Assembly
99-103	6W3694040	Spool Assembly (Extra Spool)
100	6W3696010	Drag Washer
101	6W3697010	Key Washer
102	6W3698010	Eared Washer
103	6W3699010	Drag Washer Retainer
104	6W3695010	Drag Knob

EMCAST Plus 6000 SPECIAL PARTS		
Key No.	Parts No.	Parts Name
99-103	6W3694120	Spool Assembly
99-103	6W3694140	Spool Assembly (Extra Spool)