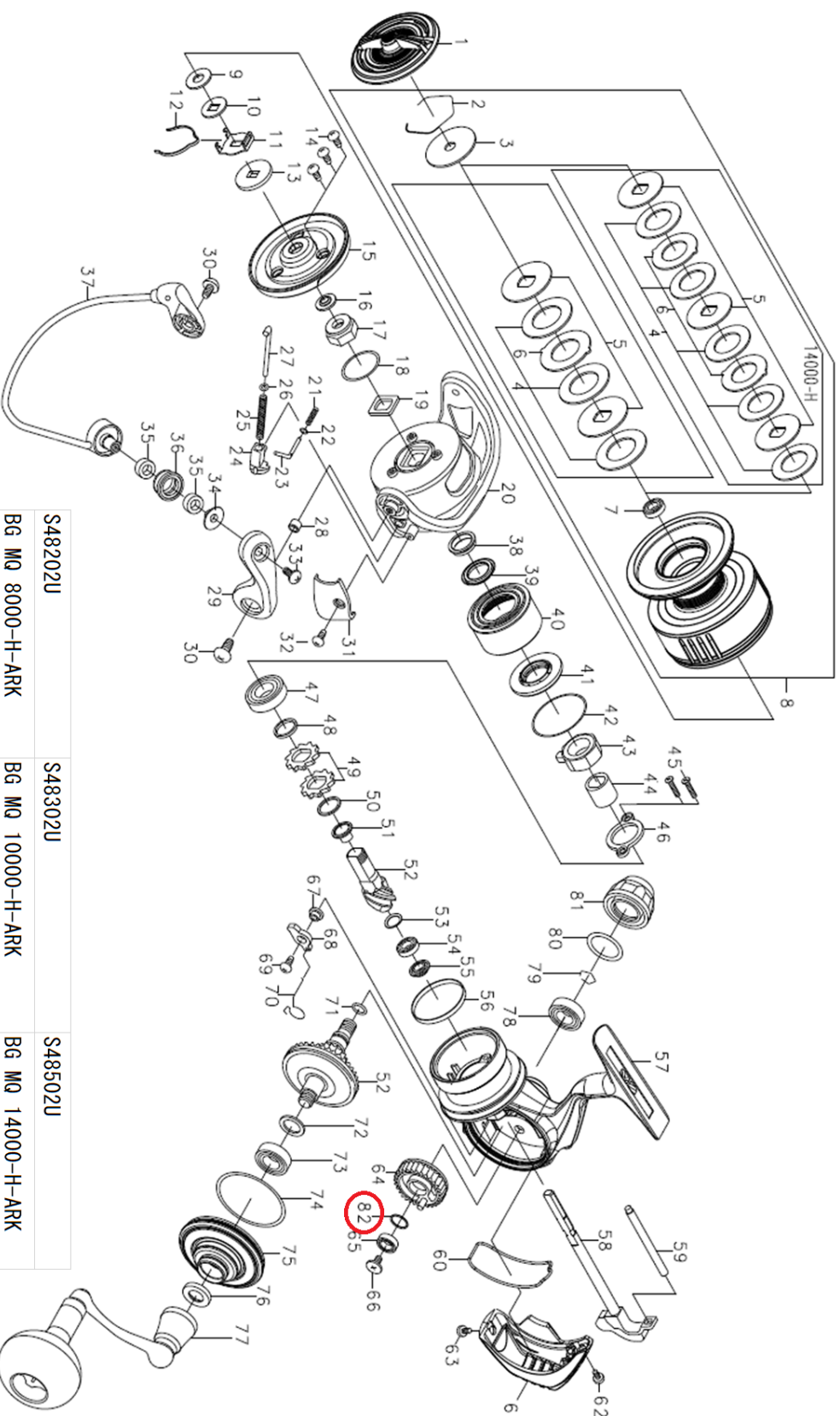




BG MQ 8000H ARK

Feel Alive.

Please quote by part number, not key number when ordering.
spares@daiwaaustralia.com.au PH: (02) 8644 8644



S48202U	S48302U	S48502U
BG MQ 8000-H-ARK	BG MQ 10000-H-ARK	BG MQ 14000-H-ARK

REEL NAME	MGFT CODE	KEY NO	PARTS CODE	DESCRIPTION
BG MQ 8000H ARK	S48202U	1	6M130901	DRAG KNOB
BG MQ 8000H ARK	S48202U	2	6F884001	DRAG WASHER RETAINER
BG MQ 8000H ARK	S48202U	3	6H380901	WASHER (A)
BG MQ 8000H ARK	S48202U	4	6J313601	DRAG WASHER
BG MQ 8000H ARK	S48202U	5	6H175101	KEY WASHER
BG MQ 8000H ARK	S48202U	6	6G700701	EARED WAHSER
BG MQ 8000H ARK	S48202U	7	6B358607	BALL BEARING (A)
BG MQ 8000H ARK	S48202U	8	6M104901	SPOOL ASSEMBLY(8000)
BG MQ 8000H ARK	S48202U	9	6F050104	WASHER (B)
BG MQ 8000H ARK	S48202U	10	6F050002	WASHER (C)
BG MQ 8000H ARK	S48202U	11	6H309501	CLICK LEAF SPRING HOLDER
BG MQ 8000H ARK	S48202U	12	6B747701	SPOOL CLICK LEAF SPRING
BG MQ 8000H ARK	S48202U	13	6F049901	WASHER (D)
BG MQ 8000H ARK	S48202U	14	6G270801	SCREW (A)
BG MQ 8000H ARK	S48202U	15	6J992601	COLLAR (A)
BG MQ 8000H ARK	S48202U	16	6I898101	ROTOR NUT PACKING
BG MQ 8000H ARK	S48202U	17	6J996301	ROTOR NUT
BG MQ 8000H ARK	S48202U	18	6H501001	ORING (A)
BG MQ 8000H ARK	S48202U	19	6G392202	PLATE
BG MQ 8000H ARK	S48202U	20	6J321604	ROTOR
BG MQ 8000H ARK	S48202U	21	6H503401	BAIL SPRING (A)
BG MQ 8000H ARK	S48202U	22	6G685401	WASHER (E)
BG MQ 8000H ARK	S48202U	23	6H503301	BAIL SPRING SHAFT (A)
BG MQ 8000H ARK	S48202U	24	6J322001	BAIL SPRING HOLDER
BG MQ 8000H ARK	S48202U	25	6J321901	BAIL SPRING (B)
BG MQ 8000H ARK	S48202U	26	6J321801	WASHER (F)
BG MQ 8000H ARK	S48202U	27	6J321701	BAIL SPRING SHAFT (B)
BG MQ 8000H ARK	S48202U	28	6H945501	COLLAR (B)
BG MQ 8000H ARK	S48202U	29	6J309703	BAIL ARM
BG MQ 8000H ARK	S48202U	30	6G455601	SCREW (B)
BG MQ 8000H ARK	S48202U	31	6J322103	COVER(A)
BG MQ 8000H ARK	S48202U	32	6G270801	SCREW (C)
BG MQ 8000H ARK	S48202U	33	6F608901	SCREW (D)
BG MQ 8000H ARK	S48202U	34	6J310401	COLLAR (C)
BG MQ 8000H ARK	S48202U	35	6J416001	COLLAR (D)
BG MQ 8000H ARK	S48202U	36	6H246103	LINE ROLLER
BG MQ 8000H ARK	S48202U	37	6J323301	BAIL ASSEMBLY
BG MQ 8000H ARK	S48202U	38	6G162301	COLLAR (E)
BG MQ 8000H ARK	S48202U	39	6J996101	PACKING (A)
BG MQ 8000H ARK	S48202U	40	6J993201	BODY NUT
BG MQ 8000H ARK	S48202U	41	6J961401	COLLAR (F)
BG MQ 8000H ARK	S48202U	42	6J961501	ORING (B)
BG MQ 8000H ARK	S48202U	43	6J309101	ROLLER CLUTCH
BG MQ 8000H ARK	S48202U	44	6J309002	SPACING SLEEVE
BG MQ 8000H ARK	S48202U	45	6J001602	SCREW (E)
BG MQ 8000H ARK	S48202U	46	6J308401	BEARING RETAINER (A)
BG MQ 8000H ARK	S48202U	47	6G426301	BALL BEARING (B)
BG MQ 8000H ARK	S48202U	48	6G613404	WASHER (G)
BG MQ 8000H ARK	S48202U	49	6E262701	RATCHET
BG MQ 8000H ARK	S48202U	50	6G613404	WASHER (H)
BG MQ 8000H ARK	S48202U	51	6M057102	COLLAR (G)
BG MQ 8000H ARK	S48202U	52	6Z025984	PINION GEAR + DRIVE GEAR
BG MQ 8000H ARK	S48202U	53	6G578501	WASHER (I)
BG MQ 8000H ARK	S48202U	54	6G522706	BALL BEARING (C)
BG MQ 8000H ARK	S48202U	55	6J320901	COLLAR (H)
BG MQ 8000H ARK	S48202U	56	6H629701	BRAKE RING
BG MQ 8000H ARK	S48202U	57	6M105501	BODY(8000)
BG MQ 8000H ARK	S48202U	58	6J992701	MAIN SHAFT
BG MQ 8000H ARK	S48202U	59	6J320801	STABILIZAR BAR
BG MQ 8000H ARK	S48202U	60	6J993001	PACKING (B)

