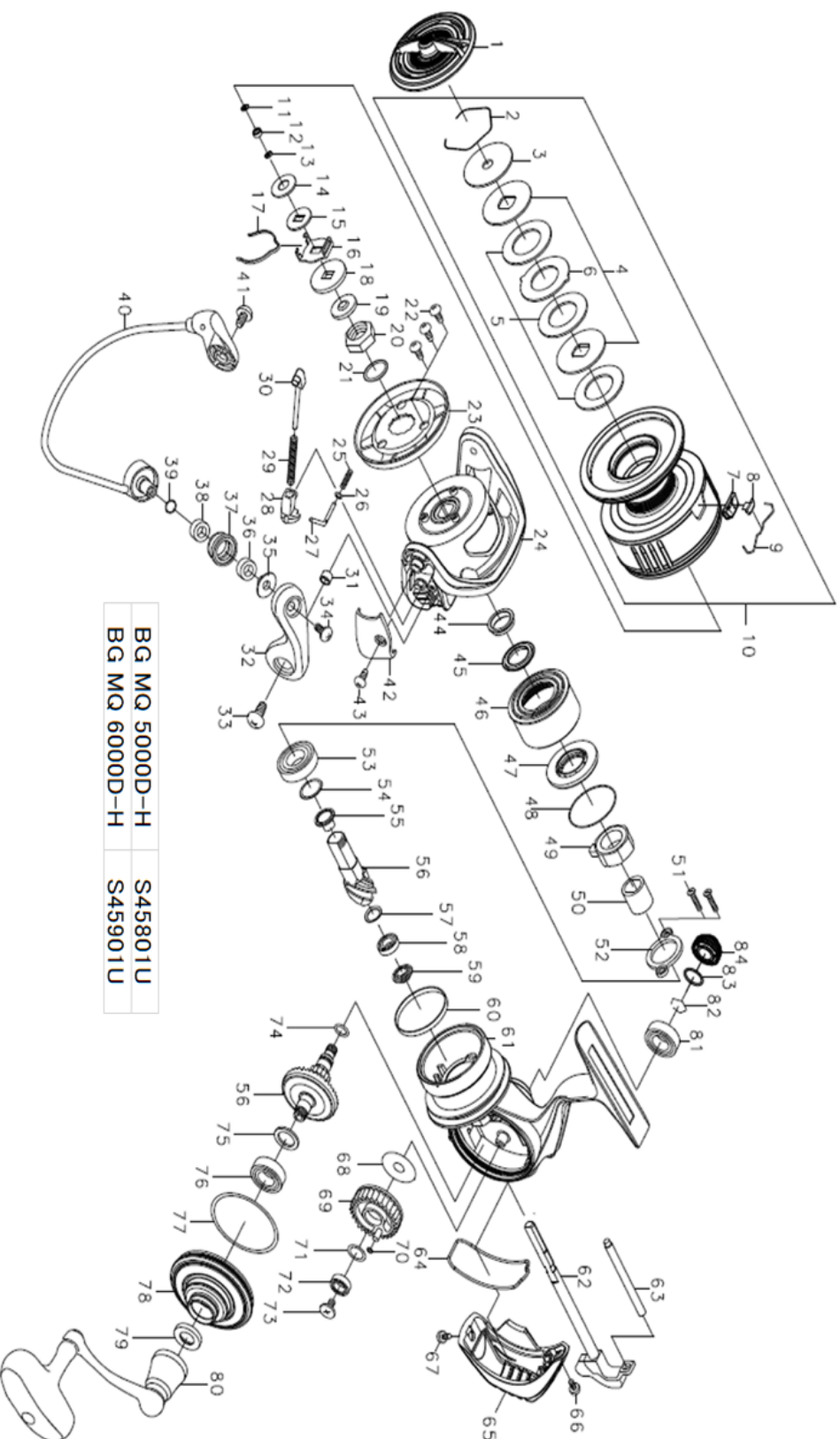




BG MQ 5000D-H

Feel Alive.

Please quote by part number, not key number when ordering.
spares@daiwaaustralia.com.au PH: (02) 8644 8644



REEL NAME	MGFT CODE	KEY NO	PARTS CODE	DESCRIPTION
BG MQ 5000D-H		1	6J961701	DRAG KNOB
BG MQ 5000D-H		2	61704101	DRAG RING
BG MQ 5000D-H		3	6J979901	DRAG RATCHET
BG MQ 5000D-H		4	6J577501	DRAG DISK WASHER
BG MQ 5000D-H		5	6M150501	ATD DRAG WASHER (1 pack - 3 pcs)
BG MQ 5000D-H		6	6J577301	DRAG LIP WASHER
BG MQ 5000D-H		7	6J568601	LINE STOPPER PLATE
BG MQ 5000D-H		8	6J558001	LINE STOPPER
BG MQ 5000D-H		9	6J314801	LINE STOPPER SPRING
BG MQ 5000D-H		10	6M035701	SPOOL ASSY
BG MQ 5000D-H		11	6M005501	SPOOL WASHER(A)
BG MQ 5000D-H		12	6G466206	SPOOL BALL BEARING
BG MQ 5000D-H		13	6E096505	SPOOL WASHER(B)
BG MQ 5000D-H		14	6F050104	SPOOL WASHER(C -03mm)
BG MQ 5000D-H		15	6F050002	SPOOL WASHER(D)
BG MQ 5000D-H		16	6M069601	CLICK HOLDER
BG MQ 5000D-H		17	6B747701	CLICK LEAF SPRING
BG MQ 5000D-H		18	6F049901	SPOOL WASHER(D)
BG MQ 5000D-H		19	6H995201	ROTOR NUT PACKING
BG MQ 5000D-H		20	6M057201	ROTOR NUT
BG MQ 5000D-H		21	6G162401	ROTOR NUT O RING
BG MQ 5000D-H		22	6H417701	ROTOR COVER SCREW
BG MQ 5000D-H		23	6J964501	ROTOR COVER
BG MQ 5000D-H		24	6J961301	ROTOR
BG MQ 5000D-H		25	6H620401	ROTOR BRAKES SPRING
BG MQ 5000D-H		26	6G685401	ROTOR BRAKES SPRING WASHER
BG MQ 5000D-H		27	6H620301	ROTOR BRAKES SHAFT
BG MQ 5000D-H		28	6H620501	ARM LEVER SPRING COLLAR
BG MQ 5000D-H		29	6J970301	ARM LEVER SPRING
BG MQ 5000D-H		30	6G017504	ARM LEVER SHAFT
BG MQ 5000D-H		31	6H945501	ARM LEVER SCREW COLLAR
BG MQ 5000D-H		32	6J962402	ARM LEVER
BG MQ 5000D-H		33	6M056801	ARM LEVER SCREW
BG MQ 5000D-H		34	6F608901	ROLLER SCREW
BG MQ 5000D-H		35	6J972501	ROLLER COLLAR(A)
BG MQ 5000D-H		36	6J964901	ROLLER COLLAR(B)
BG MQ 5000D-H		37	6J186602	LINE ROLLER
BG MQ 5000D-H		38	6J964801	ROLLER COLLAR(C)
BG MQ 5000D-H		39	6E096502	ROLLER WASHER(03mm)
BG MQ 5000D-H		40	6J969501	BAIL ASSY
BG MQ 5000D-H		41	6M056801	BAIL HOLDER SCREW
BG MQ 5000D-H		42	6J964401	ARM LEVER COVER
BG MQ 5000D-H		43	6H503901	ARM LEVER COVER SCREW
BG MQ 5000D-H		44	6M056901	SEALED CAP COLLAR
BG MQ 5000D-H		45	6G162301	SEALED CAP PACKING
BG MQ 5000D-H		46	6J961601	SEALED CAP
BG MQ 5000D-H		47	6J961401	SEALED CAP PLATE
BG MQ 5000D-H		48	6J961501	SEALED CAP O RING
BG MQ 5000D-H		49	6J309101	ONE WAY CLUTCH
BG MQ 5000D-H		50	6M056702	CLUTCH RING
BG MQ 5000D-H		51	6J000901	BEARING PLATE SCREW
BG MQ 5000D-H		52	6J020801	BEARING PLATE
BG MQ 5000D-H		53	6G522802	PINION BALL BEARING (A)
BG MQ 5000D-H		54	63712801	PINION BEARING (A) WASHER01mm
BG MQ 5000D-H		55	6M057101	PINION BEARING (A) COLLAR
BG MQ 5000D-H		56	6Z025299	PINION + DRIVE GEAR UNIT
BG MQ 5000D-H		57	6G572501	PINON BEARING (B) WASHER
BG MQ 5000D-H		58	6G467102	PINON BALL BEARING (B)
BG MQ 5000D-H		59	6I428101	PINION BEARING (B) COLLAR
BG MQ 5000D-H		60	6J964001	SEALED CAP RING

