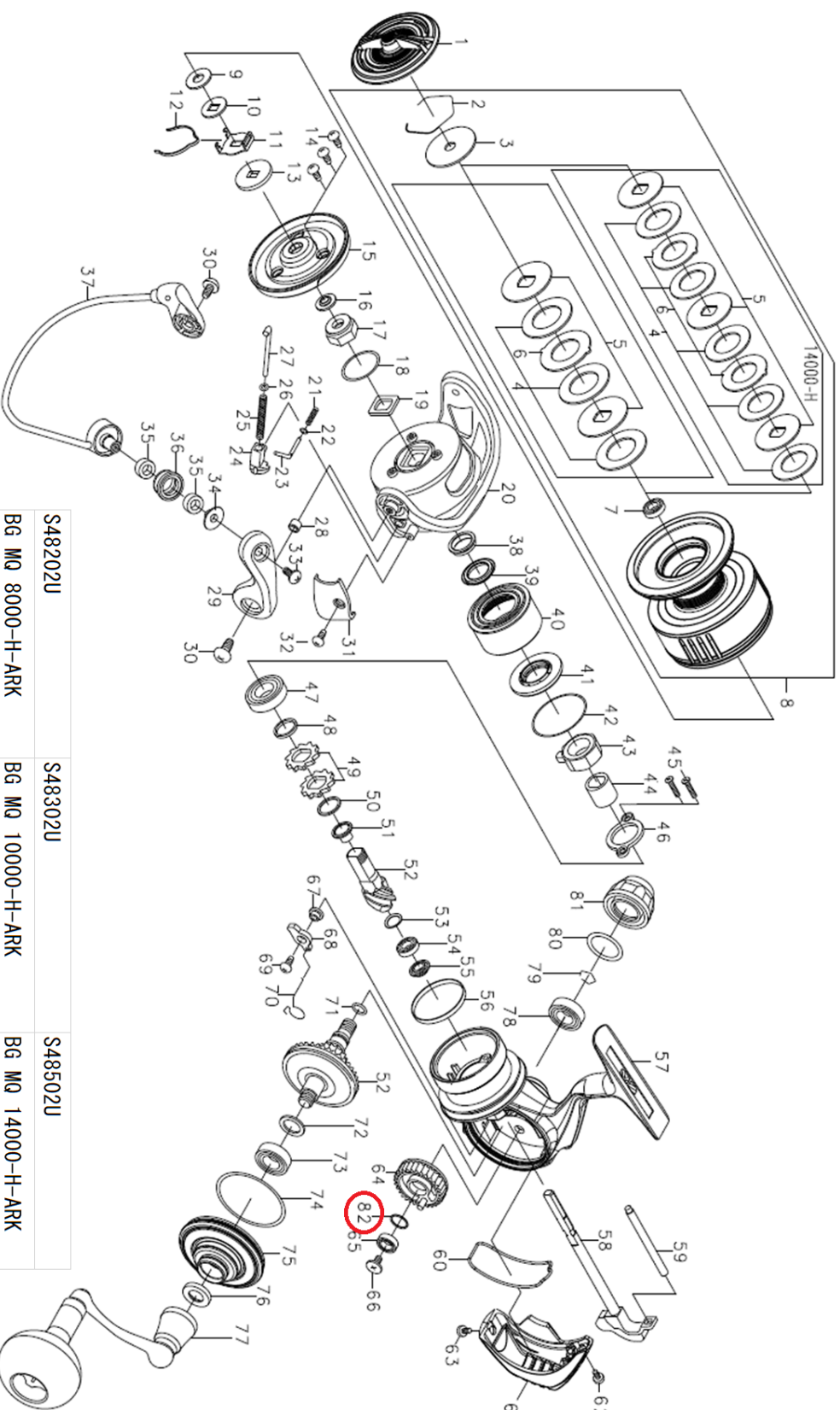




BG MQ 10000H ARK

Feel Alive.

Please quote by part number, not key number when ordering.
spares@daiwaaustralia.com.au PH: (02) 8644 8644



| | | |
|------------------|-------------------|-------------------|
| S48202U | S48302U | S48502U |
| BG MQ 8000-H-ARK | BG MQ 10000-H-ARK | BG MQ 14000-H-ARK |

| REEL NAME | MGFT CODE | KEY NO | PARTS CODE | DESCRIPTION |
|------------------|-----------|--------|------------|--------------------------|
| BG MQ 10000H ARK | S48302U | 1 | 6M130901 | DRAG KNOB |
| BG MQ 10000H ARK | S48302U | 2 | 6F884001 | DRAG WASHER RETAINER |
| BG MQ 10000H ARK | S48302U | 3 | 6H380901 | WASHER (A) |
| BG MQ 10000H ARK | S48302U | 4 | 6J313601 | DRAG WASHER |
| BG MQ 10000H ARK | S48302U | 5 | 6H175101 | KEY WASHER |
| BG MQ 10000H ARK | S48302U | 6 | 6G700701 | EARED WAHSER |
| BG MQ 10000H ARK | S48302U | 7 | 6B358607 | BALL BEARING (A) |
| BG MQ 10000H ARK | S48302U | 8 | 6M105201 | SPOOL ASSEMBLY(10000) |
| BG MQ 10000H ARK | S48302U | 9 | 6F050104 | WASHER (B) |
| BG MQ 10000H ARK | S48302U | 10 | 6F050002 | WASHER (C) |
| BG MQ 10000H ARK | S48302U | 11 | 6H309501 | CLICK LEAF SPRING HOLDER |
| BG MQ 10000H ARK | S48302U | 12 | 6B747701 | SPOOL CLICK LEAF SPRING |
| BG MQ 10000H ARK | S48302U | 13 | 6F049901 | WASHER (D) |
| BG MQ 10000H ARK | S48302U | 14 | 6G270801 | SCREW (A) |
| BG MQ 10000H ARK | S48302U | 15 | 6J992601 | COLLAR (A) |
| BG MQ 10000H ARK | S48302U | 16 | 6I898101 | ROTOR NUT PACKING |
| BG MQ 10000H ARK | S48302U | 17 | 6J996301 | ROTOR NUT |
| BG MQ 10000H ARK | S48302U | 18 | 6H501001 | ORING (A) |
| BG MQ 10000H ARK | S48302U | 19 | 6G392202 | PLATE |
| BG MQ 10000H ARK | S48302U | 20 | 6J321604 | ROTOR |
| BG MQ 10000H ARK | S48302U | 21 | 6H503401 | BAIL SPRING (A) |
| BG MQ 10000H ARK | S48302U | 22 | 6G685401 | WASHER (E) |
| BG MQ 10000H ARK | S48302U | 23 | 6H503301 | BAIL SPRING SHAFT (A) |
| BG MQ 10000H ARK | S48302U | 24 | 6J322001 | BAIL SPRING HOLDER |
| BG MQ 10000H ARK | S48302U | 25 | 6J321901 | BAIL SPRING (B) |
| BG MQ 10000H ARK | S48302U | 26 | 6J321801 | WASHER (F) |
| BG MQ 10000H ARK | S48302U | 27 | 6J321701 | BAIL SPRING SHAFT (B) |
| BG MQ 10000H ARK | S48302U | 28 | 6H945501 | COLLAR (B) |
| BG MQ 10000H ARK | S48302U | 29 | 6J309703 | BAIL ARM |
| BG MQ 10000H ARK | S48302U | 30 | 6G455601 | SCREW (B) |
| BG MQ 10000H ARK | S48302U | 31 | 6J322103 | COVER(A) |
| BG MQ 10000H ARK | S48302U | 32 | 6G270801 | SCREW (C) |
| BG MQ 10000H ARK | S48302U | 33 | 6F608901 | SCREW (D) |
| BG MQ 10000H ARK | S48302U | 34 | 6J310401 | COLLAR (C) |
| BG MQ 10000H ARK | S48302U | 35 | 6J416001 | COLLAR (D) |
| BG MQ 10000H ARK | S48302U | 36 | 6H246103 | LINE ROLLER |
| BG MQ 10000H ARK | S48302U | 37 | 6J323301 | BAIL ASSEMBLY |
| BG MQ 10000H ARK | S48302U | 38 | 6G162301 | COLLAR (E) |
| BG MQ 10000H ARK | S48302U | 39 | 6J996101 | PACKING (A) |
| BG MQ 10000H ARK | S48302U | 40 | 6J993201 | BODY NUT |
| BG MQ 10000H ARK | S48302U | 41 | 6J961401 | COLLAR (F) |
| BG MQ 10000H ARK | S48302U | 42 | 6J961501 | ORING (B) |
| BG MQ 10000H ARK | S48302U | 43 | 6J309101 | ROLLER CLUTCH |
| BG MQ 10000H ARK | S48302U | 44 | 6J309002 | SPACING SLEEVE |
| BG MQ 10000H ARK | S48302U | 45 | 6J001602 | SCREW (E) |
| BG MQ 10000H ARK | S48302U | 46 | 6J308401 | BEARING RETAINER (A) |
| BG MQ 10000H ARK | S48302U | 47 | 6G426301 | BALL BEARING (B) |
| BG MQ 10000H ARK | S48302U | 48 | 6G613404 | WASHER (G) |
| BG MQ 10000H ARK | S48302U | 49 | 6E262701 | RATCHET |
| BG MQ 10000H ARK | S48302U | 50 | 6G613404 | WASHER (H) |
| BG MQ 10000H ARK | S48302U | 51 | 6M057102 | COLLAR (G) |
| BG MQ 10000H ARK | S48302U | 52 | 6Z025984 | PINION GEAR + DRIVE GEAR |
| BG MQ 10000H ARK | S48302U | 53 | 6G578501 | WASHER (I) |
| BG MQ 10000H ARK | S48302U | 54 | 6G522706 | BALL BEARING (C) |
| BG MQ 10000H ARK | S48302U | 55 | 6J320901 | COLLAR (H) |
| BG MQ 10000H ARK | S48302U | 56 | 6H629701 | BRAKE RING |
| BG MQ 10000H ARK | S48302U | 57 | 6M105601 | BODY(10000) |
| BG MQ 10000H ARK | S48302U | 58 | 6J992701 | MAIN SHAFT |
| BG MQ 10000H ARK | S48302U | 59 | 6J320801 | STABILIZAR BAR |
| BG MQ 10000H ARK | S48302U | 60 | 6J993001 | PACKING (B) |

