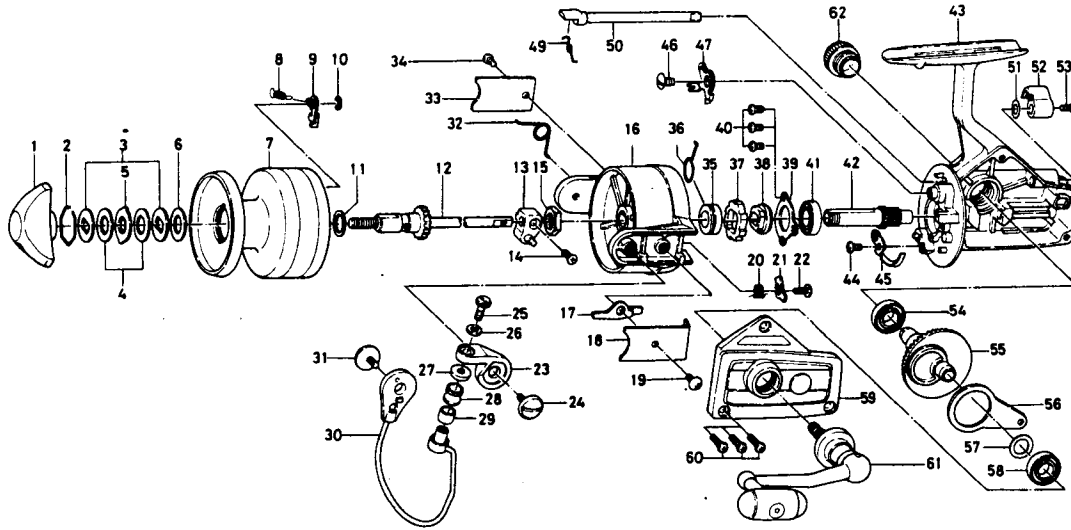


SPINNING REEL

BLACK GOLD BG-60 & BG-60SC



**SPECIAL PARTS FOR GS-60SC
6-280-9702**

RATCHET

Key No.	Parts No.	Parts Name
1	6-000-8241	Drag knob
2	6-170-4511	Drag washer retainer
3	6-376-0101	Drag D washer
4	6-372-6504	Disc washer
5	6-375-5401	Drag A washer
6	6-372-3004	Drag washer A
7	6-734-8003	Spool
8	6-145-2101	Spool click claw spring
9	6-807-8201	Spool click claw
10	6-320-1402	Spool click claw retainer
11	6-372-9601	Spool washer
12	6-711-5802	Main shaft
13	6-637-4111	Oscillating support
14	6-351-8901	Oscillating slider screw
15	6-810-5701	Rotor nut
16	6-202-1903	Rotor
17	6-571-1201	Bail kick lever
18	6-041-9202	Bail kick lever cover
19	6-351-7701	Bail kick lever cover screw
20	6-145-3001	Bail kick cam spring
21	6-571-1101	Bail kick cam
22	6-353-8201	Bail kick cam screw
23	6-231-3501	Arm lever
24	6-363-5201	Arm lever screw
25	6-363-3111	Bail screw
26	6-375-1101	Bail washer
27	6-501-2001	Roller collar
28	6-250-4501	Line roller
29	6-502-1401	Roller metal
30	6-725-8702	Bail
31	6-363-5201	Bail holder screw

Sold as one unit
Spool assembly
6-734-7902

Key No.	Parts No.	Parts Name
32	6-B21-1801	Bail spring
33	6-B01-4002	Bail spring cover
34	6-351-6101	Bail spring cover screw
35	6-502-1301	Spring holder
36	6-145-2901	Anti-reverse claw spring
37	6-B10-0801	Ratchet
38	6-636-6711	Click gear
39	6-050-5101	Ball bearing ret. washer
40	6-351-6601	Ball bearing ret. washer screw
41	6-635-5001	Ball bearing
42	6-403-3301	Pinion gear
43	6-B31-8901	Body
44	6-351-6601	Cam kick plate screw
45	6-B22-9901	Cam kick plate
46	6-352-1102	Anti-reverse claw screw
47	6-B24-1601	Anti-reverse claw
49	6-144-0321	Anti-reverse cam spring
50	6-B15-6402	Anti-reverse cam
51	6-373-2700	Anti-reverse lever washer
52	6-541-7301	Anti-reverse lever
53	6-352-2501	Anti-reverse lever screw
54	6-636-6011	Ball bearing
55	6-414-2901	Drive gear
56	6-481-2701	Oscillating slider
57	6-371-2800	Drive gear washer
58	6-636-6011	Ball bearing
59	6-B31-9201	Body cover
60	6-351-5901	Body cover screw
61	6-B36-8801	Handle
62	6-363-4701	Handle screw cap