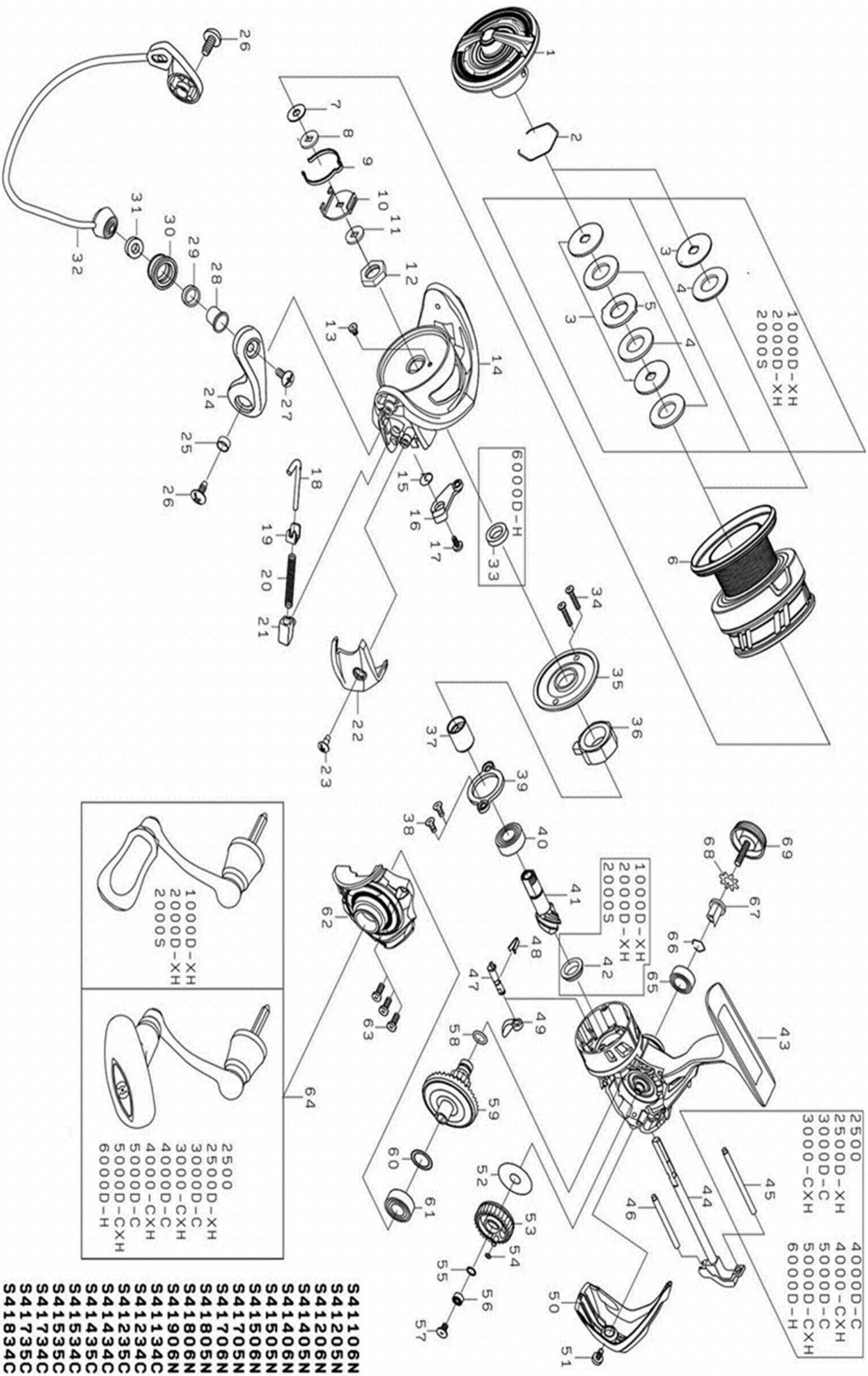




AGGREST LT 6000D-H

Feel Alive.

Please quote by part number, not key number when ordering.
spares@daiwaaustralia.com.au PH: (02) 8644 8644



S411106N
 S41205N
 S41206N
 S41405N
 S41406N
 S41505N
 S41506N
 S41705N
 S41706N
 S41805N
 S41806N
 S41906N
 S411134C
 S411234C
 S41134C
 S41234C
 S41434C
 S41435C
 S41534C
 S41535C
 S41734C
 S41735C
 S41834C
 S41835C
 S41934C

| REEL NAME | MGFT CODE | KEY NO | PARTS CODE | DESCRIPTION |
|--------------------|-----------|--------|------------|---------------------------------|
| AGGREST LT 6000D-H | S41906N | 1 | 6Q364201 | DRAG KNOB |
| AGGREST LT 6000D-H | S41906N | 2 | 61704101 | DRAG RING |
| AGGREST LT 6000D-H | S41906N | 3 | 6J577501 | DRAG DISC WASHER |
| AGGREST LT 6000D-H | S41906N | 4 | 6J577201 | DRAG WASHER |
| AGGREST LT 6000D-H | S41906N | 5 | 6Q377601 | DRAG LIP WASHER |
| AGGREST LT 6000D-H | S41906N | 2~6 | 6Q484801 | SPOOL ASSY (2-6) |
| AGGREST LT 6000D-H | S41906N | 7 | 6F050104 | SPOOL WASHER (A) |
| AGGREST LT 6000D-H | S41906N | 8 | 6Q363801 | SPOOL WASHER (B) |
| AGGREST LT 6000D-H | S41906N | 9 | 6Q457701 | CLICK LEAF SPRING |
| AGGREST LT 6000D-H | S41906N | 10 | 6Q466801 | CLICK HOLDER |
| AGGREST LT 6000D-H | S41906N | 11 | 6Q377501 | ROTOR WASHER |
| AGGREST LT 6000D-H | S41906N | 12 | 6Q135201 | ROTOR NUT |
| AGGREST LT 6000D-H | S41906N | 13 | 6H022701 | ROTOR NUT SCREW |
| AGGREST LT 6000D-H | S41906N | 14 | 6Q134515 | ROTOR |
| AGGREST LT 6000D-H | S41906N | 15 | 6H413601 | KICK LEVER SPRING |
| AGGREST LT 6000D-H | S41906N | 16 | 6Q134601 | KICK LEVER |
| AGGREST LT 6000D-H | S41906N | 17 | 6H417701 | KICK LEVER SCREW |
| AGGREST LT 6000D-H | S41906N | 18 | 6Q134801 | ARMLEVER SHAFT |
| AGGREST LT 6000D-H | S41906N | 19 | 6H576101 | ARMLEVER SHAFT PLATE |
| AGGREST LT 6000D-H | S41906N | 20 | 6H640701 | ARMREVER SPRING |
| AGGREST LT 6000D-H | S41906N | 21 | 6Q121501 | ARMLEVER SPRING HOLDER |
| AGGREST LT 6000D-H | S41906N | 22 | 6Q134901 | ARMLEVER SPRING COVER |
| AGGREST LT 6000D-H | S41906N | 23 | 6G205001 | ARMLEVER SPRING COVER SCREW |
| AGGREST LT 6000D-H | S41906N | 24 | 6Q121606 | ARM LEVER |
| AGGREST LT 6000D-H | S41906N | 25 | 6Q121701 | ARMLEVER SCREW COLLER |
| AGGREST LT 6000D-H | S41906N | 26 | 6G205001 | ARMLEVER SCREW |
| AGGREST LT 6000D-H | S41906N | 27 | 6G195602 | ROLLER SCREW |
| AGGREST LT 6000D-H | S41906N | 28 | 6G195501 | ROLLER COLLAR (A) |
| AGGREST LT 6000D-H | S41906N | 29 | 6G220701 | ROLLER COLLAR (B) |
| AGGREST LT 6000D-H | S41906N | 30 | 6J089903 | LINE ROLLER |
| AGGREST LT 6000D-H | S41906N | 31 | 6Q203401 | ROLLER COLLAR (C) |
| AGGREST LT 6000D-H | S41906N | 32 | 6Q168001 | BAIL |
| AGGREST LT 6000D-H | S41906N | 33 | 6H640301 | COLLAR |
| AGGREST LT 6000D-H | S41906N | 34 | 6G837101 | ONEWAY CLUTCH PLATE SCREW |
| AGGREST LT 6000D-H | S41906N | 35 | 6Q134301 | ONEWAY CLUTCH PLATE |
| AGGREST LT 6000D-H | S41906N | 36 | 6J015701 | ONEWAY CLUTCH |
| AGGREST LT 6000D-H | S41906N | 37 | 6J021301 | CLUTCH RING |
| AGGREST LT 6000D-H | S41906N | 38 | 6Q126201 | PINION BEARING PLATE SCREW |
| AGGREST LT 6000D-H | S41906N | 39 | 6J020801 | PINION BEARING PLATE |
| AGGREST LT 6000D-H | S41906N | 40 | 66354801 | PINION BALL BEARING |
| AGGREST LT 6000D-H | S41906N | 41 | 6Q208701 | PINION GEAR |
| AGGREST LT 6000D-H | S41906N | 42 | ----- | ----- |
| AGGREST LT 6000D-H | S41906N | 43 | 6Q484701 | BODY |
| AGGREST LT 6000D-H | S41906N | 44 | 6Q362601 | MAIN SHAFT |
| AGGREST LT 6000D-H | S41906N | 45 | 6Q126303 | OSCILLATING POST(A) |
| AGGREST LT 6000D-H | S41906N | 46 | 6Q119103 | OSCILLATING POST(B) |
| AGGREST LT 6000D-H | S41906N | 47 | 6Q133401 | STOPPER CAM |
| AGGREST LT 6000D-H | S41906N | 48 | 6H697801 | STOPPER LEVER SPRING |
| AGGREST LT 6000D-H | S41906N | 49 | 6Q118001 | STOPPER LEVER |
| AGGREST LT 6000D-H | S41906N | 50 | 6Q134401 | REAR COVER |
| AGGREST LT 6000D-H | S41906N | 51 | 6G270801 | REAR CAP SCREW |
| AGGREST LT 6000D-H | S41906N | 52 | 6G644201 | OSCILLATING GEAR WASHER |
| AGGREST LT 6000D-H | S41906N | 53 | 6Q133501 | OSCILLATING GEAR |
| AGGREST LT 6000D-H | S41906N | 54 | 6B853101 | OSCILLATING GEAR O-RING |
| AGGREST LT 6000D-H | S41906N | 55 | 6G522103 | OSCILLATING GEAR BEARING WASHER |
| AGGREST LT 6000D-H | S41906N | 56 | 6G467105 | OSCILLATING GEAR BALL BEARING |
| AGGREST LT 6000D-H | S41906N | 57 | 6H463401 | OSCILLATING GEAR SCREW |
| AGGREST LT 6000D-H | S41906N | 58 | 6G645301 | DRIVE GEAR O-RING |
| AGGREST LT 6000D-H | S41906N | 59 | 6Q167401 | DRIVE GEAR |
| AGGREST LT 6000D-H | S41906N | 60 | 63737808 | DRIVE WASHER |
| AGGREST LT 6000D-H | S41906N | 61 | 6B861705 | DRIVE BALL BEARING |
| AGGREST LT 6000D-H | S41906N | 62 | 6Q485201 | BODY COVER |
| AGGREST LT 6000D-H | S41906N | 63 | 6G115001 | BODY COVER SCREW |
| AGGREST LT 6000D-H | S41906N | 64 | 6Q485001 | HANDLE |
| AGGREST LT 6000D-H | S41906N | 65 | 6B861705 | DRIVE BALL BEARING |
| AGGREST LT 6000D-H | S41906N | 66 | 6G525101 | DRIVE BALL BEARING RING |
| AGGREST LT 6000D-H | S41906N | 67 | 6F721202 | HANDLE COLLAR |
| AGGREST LT 6000D-H | S41906N | 68 | 61608401 | HANDLE SP WASHER |
| AGGREST LT 6000D-H | S41906N | 69 | 6Q136101 | HANDLE SCREW |