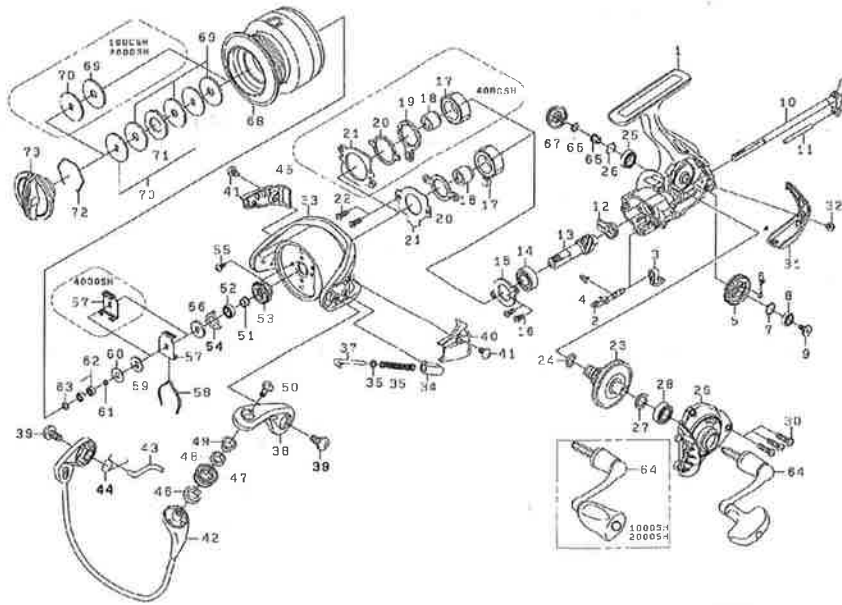




SPINNING REEL AIRD 1000SH/2000SH/2500SH/4000SH

Please order by parts number, not key number
Veuillez indiquer le numéro de la pièce (Non "Key" No.)



Key No.	AIRD 1000SH Parts No.	Parts Name	Désignation des pièces	AIRD 2000SH Parts No.	AIRD 2500SH Parts No.	AIRD 4000SH Parts No.
1	6H762701	Body	Bâti	6H762701	6H767101	6H767801
2	6H463101	Anti-Reverse Cam	Came du cliquet anti-retour	6H463101	6H463101	6H508301
3	6H463203	Anti-Reverse Lever	Commande de l'anti-retour	6H463203	6H463203	6H463203
4	6H463301	Anti-Reverse Cam Spring	Ressort de came du cliquet anti-retour	6H463301	6H463301	6H463301
5	6H495801	Oscillating Gear	Roue d'oscillation	6H495801	6H498801	6H545301
6	6G683301	"O" Ring (A)	Anneau torique (A)	6G683301	6G466001	6B853101
7	6G466100	Washer (A)	Rondelle (A)	6G466100	6G466100	6G522100
8	6F055602	Ball Bearing (A)	Roulement à billes (A)	6F055602	6F055602	6G467102
9	6H463401	Screw (A)	Vis (A)	6H463401	6H463401	6H463401
10	6H733301	Main Shaft	Axe principal	6H733301	6H732501	6H734801
11	6H494201	Stabilizer Bar	Entretoise	6H494201	6H463701	6H508801
12	6H463801	Collar (A)	Collier (A)	6H463801	6H463801	6H508901
13	6H733401	Pinion Gear	Pignon	6H733401	6H782901	6H783101
14	6H726801	Ball Bearing (B)	Roulement à billes (B)	6H726801	6H726801	6H735001
15	6H463901	Bearing Retainer (A)	Rondelle de retenue du roulement à billes (A)	6H463901	6H463901	6H509101
16	6H624901	Screw (B)	Vis (B)	6H624901	6H624901	6H624901
17	6G539201	Roller Clutch	Roulement à aiguilles	6G539201	6G539201	6G314501
18	6H624702	Spacing Sleeve	Manchon	6H624702	6H624702	6G743003
19		Clutch Cam	Came d'embrayage			6F641401
20	6H161801	Clutch Cam Retainer	Verrou de came d'embrayage	6H161801	6H161801	6F641501
21	6H464001	Roller Clutch Retainer	Clips disque embrayage	6H464001	6H464001	6H515001
22	6G837101	Screw (C)	Vis (C)	6G837101	6G837101	6G837101
23	6H733501	Drive Gear	Roue de commande	6H733501	6H726901	6H735101
24	6G670501	"O" Ring (B)	Anneau torique (B)	6G670501	6G670501	6G645301
25	6G522703	Ball Bearing (C)	Roulement à billes (C)	6G522703	6G522703	6B861704
26	6G472401	Bearing Retainer (B)	Rondelle de retenue du roulement à billes (B)	6G472401	6G472401	6G525101
27	63758500	Washer (B)	Rondelle (B)	63758500	63758500	63737800
28	6G467302	Ball Bearing (D)	Roulement à billes (D)	6G467302	6G467302	6G523401
29	6H762801	Side Cover	Couvercle	6H762801	6H767201	6H767901
30	6G115001	Screw (D)	Vis (D)	6G115001	6G115001	6G115001
31	6H494702	Rear Cover	Couvercle arrière	6H494702	6H464302	6H509502
32	6G270801	Screw (E)	Vis (E)	6G270801	6G270801	6G270801
33	6H494805	Rotor	Cloche	6H494805	6H464410	6H509606
34	6H496701	Bail Spring Holder	Support ressort de pick-up	6H496701	6H496701	6H509701
35	6G471701	Bail Spring	Ressort de pick-up	6G471701	6G471701	6G646201
36	6E313901	Washer (C)	Rondelle (C)	6E313901	6E313901	6E313901
37	6G471805	Bail Spring Shaft	Axe de ressort de pick-up	6G471805	6G471805	6G298201
38	6H464503	Bail Arm	Bras de pick-up	6H464503	6H464503	6H464503
39	6G205001	Screw (F)	Vis (F)	6G205001	6G205001	6G205001
40	6H497902	Cover (A)	Couvercle (A)	6H497902	6H496802	6H509802
41	6G270801	Screw (G)	Vis (G)	6G270801	6G270801	6G270801
42	6H762901	Ball Assembly	Ensemble Arceau du pick-up	6H762901	6H767301	6H770201
43	6G630801	Ball Trip Lever	Lever de déclenchement	6G630801	6G613001	6G646501
44	6G613101	Ball Trip Lever Spring	Ressort du levier de déclenchement	6G613101	6G613101	6G613101
45	6H498002	Cover (B)	Couvercle (B)	6H498002	6H496902	6H510102
46	6G047601	Collar (B)	Collier (B)	6G047601	6G047601	6G047601
47	6F921601	Line Roller	Galet de pick-up	6F921601	6F921601	6F921601
48	6G220701	Collar (C)	Collier (C)	6G220701	6G220701	6G220701
49	6G195501	Collar (D)	Collier (D)	6G195501	6G195501	6G195501
50	6G195602	Screw (H)	Vis (H)	6G195602	6G195602	6G195602
51	6G613501	Collar (E)	Collier (E)	6G613501	6G613501	6G646701
52	6G466202	Ball Bearing (E)	Roulement à billes (E)	6G466202	6G466202	6G467102
53	6G471301	Rotor Nut	Ecrou de cloche	6G471301	6G471301	6G524701
54	6G471501	Bearing Retainer (C)	Rondelle de retenue du roulement à billes (C)	6G471501	6G471501	6G524801
55	6G627701	Screw (I)	Vis (I)	6G627701	6G627701	6G627701
56	6E246101	Washer (D)	Rondelle (D)	6E246101	6E246101	6E246101
57	6G700001	Click Leaf Spring Holder	Support de ressort de réglage du cliquet	6G700001	6G700001	6G743901
58	6H570801	Spool Click Leaf Spring	Ressort de réglage de bobine	6H570801	6H570801	6F709002
59	6E467101	Washer (E)	Rondelle (E)	6E467101	6E467101	6E467101
60	6E398000	Washer (F)	Rondelle (F)	6E398000	6E398000	6E398000
61	6B411706	Washer (G)	Rondelle (G)	6B411706	6B411706	6B411706
62	6E332501	Ball Bearing (F)	Roulement à billes (F)	6E332501	6E332501	6E332501
63	6G213001	"O" Ring (C)	Anneau torique (C)	6G213001	6G213001	6G213001
64	6H763001	Handle Assembly	Manivelle	6H763001	6H767401	6H770301
65	6F721001	Collar (F)	Collier (F)	6F721001	6F721001	6F721202
66	61608101	Washer (H)	Rondelle (H)	61608101	61608101	61608101
67	6H590801	Handle Screw	Vis de manivelle	6H590801	6H590801	6H592801
68~72	6H763101	Spool Assembly	Bobine complète	6H763101	6H767501	6H770401
69	6E136001	Drag Washer	Rondelle de frein	6E136001	6E136001	6E136001
70	6E467201	Key Washer	Rondelle fixe	6E467201	6E467201	6E467201
71		Eared Washer	Rondelle à oreilles		63733606	63733606
72	6F373301	Drag Washer Retainer	Clips de rondelle de frein	6F373301	6F373301	6F373301
73	6H763301	Drag Knob	Bouton de réglage du frein	6H763301	6H767701	6H767701
68~72	6H763101	Spool Assembly (Extra Spool)	Bobine complète (Bobine extra)	6H777301	6H777501	6H777701