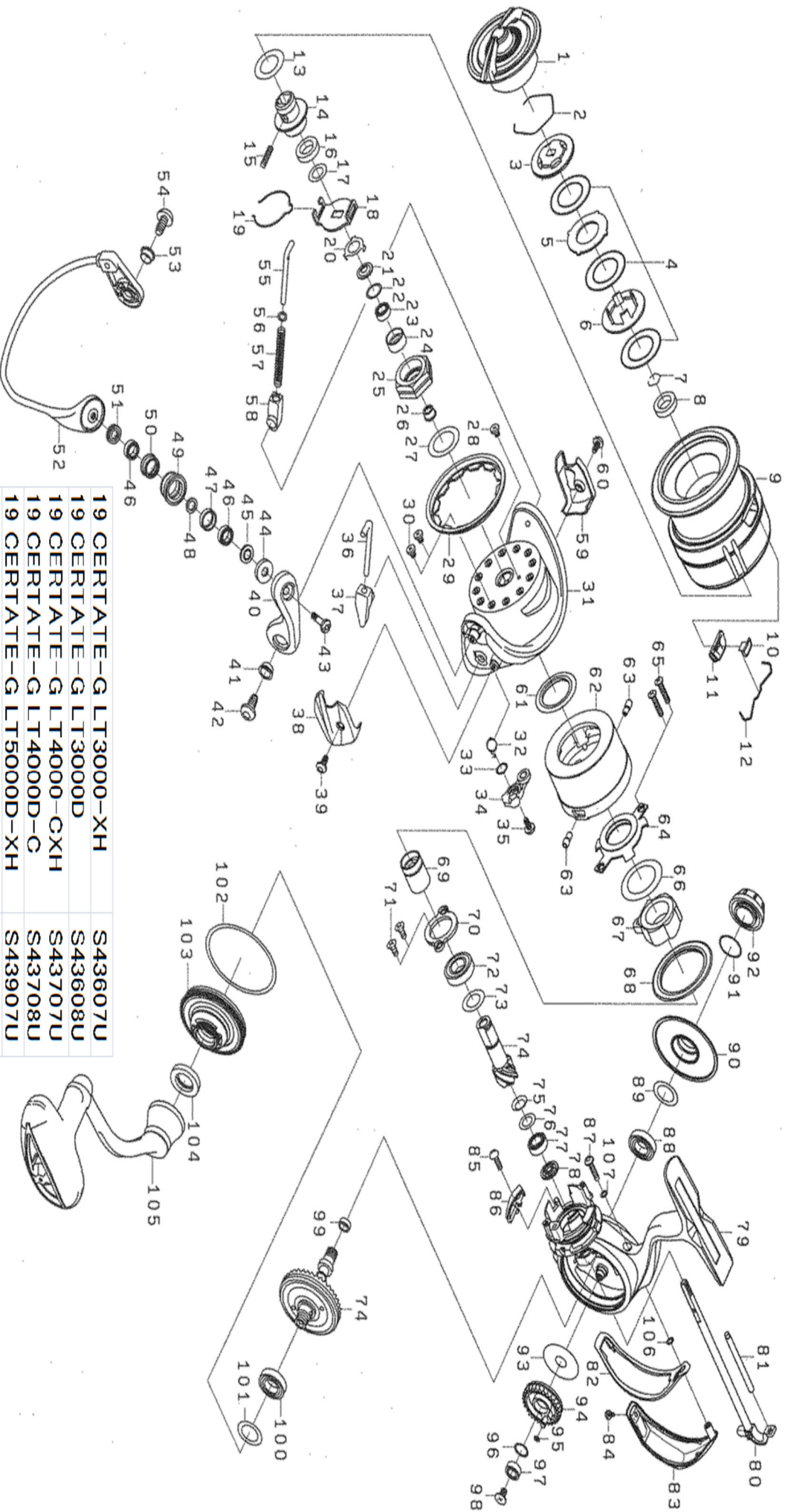




2019 CERTATE LT 5000D-XH

Please quote by part number, not key number when ordering
 spares@daiwaaustralia.com.au PH: 02 8644 8644



19 CERTATE-G LT3000-XH	S43607U
19 CERTATE-G LT3000D	S43608U
19 CERTATE-G LT4000-CXH	S43707U
19 CERTATE-G LT4000D-C	S43708U
19 CERTATE-G LT5000D-XH	S43907U
19 CERTATE-G LT5000D	S43908U



Please quote by part number, not key number when ordering
 spares@daiwaaustralia.com.au PH: 02 8644 8644
2019 CERTATE LT 5000D-XH

Key No.	Part Number	Description	Key No.	Part Number	Description	Key No.	Part Number	Description
1	61784401	DRAG KNOB ASSY	36	61262601	ARM LEVER SHAFT	72	66279602	PINION BALL BEARING(A)
2	61556701	DRAG RING	37	61262701	ARM LEVER SHAFT COLLAR	73	63758500	PINION BEARING(A) WASHER
3	61556601	DRAG RATCHET	38	61283701	ARM LEVER HOLDER COVER	74	62024757	PINION+DRIVE GEAR SET
4	61679101	ATD DRAG WASHER(LT3-3pcs)	39	61255201	ARM LEVER HOLDER COVER SCREW	75	66572500	PINION BEARING(B) SPRING WASHER
5	61561201	DRAG DISC WASHER	40	61254801	ARM LEVER	76	63755200	PINION BEARING(B) WASHER
6	61556501	DRAG RIP WASHER	41	61254901	ARM LEVER SCREW COLLAR	77	66467101	PINION BALL BEARING(B)
7	6B358702	SPOOL COLLAR RING	42	61255001	ARM LEVER SCREW	78	61802901	PINION BEARING(B) COLLAR
8	61546701	SPOOL COLLAR	43	61257001	ROLLER CREW	79	61800102	BODY ASSY
9	61801801	SPOOL ASSY.(ATD)	44	61538001	ROLLER MAG COLLAR (B)	80	61800501	MAIN SHAFT
10	61558001	LINE STOPPER	45	61538401	ROLLER MAGNET ASSEMBLY(A)	81	61800401	OSCILLATING POST
11	61568601	LINE STOPPER PLATE	46	61256702	ROLLER BALL BEARING(B)	82	61801201	REAR CAP PACKING
12	61314801	LINE STOPPER SPRING	47	61256601	ROLLER COLLAR(A)	83	61801301	REAR CAP
13	61546300	SPOOL WASHER (A)	48	61256301	ROLLER COLLAR(B)	84	61774601	REAR CAP SCREW(B)
14	61549501	SPOOL METAL	49	61256501	LINE ROLLER	85	61158201	BAIL KICK COLLAR SCREW
15	61558201	SPOOL METAL SCREW	50	61256401	ROLLER COLLAR(A)	86	61571801	BAIL KICK COLLAR
16	6H624801	SPOOL METAL COLLAR	51	61537801	ROLLER MAGNET ASSEMBLY(B)	87	61802201	REAR CAP SCREW(A)
17	61602201	SPOOL WASHER (B)	52	61801401	BAIL ASSY	88	66523403	DRIVE BALL BEARING(A)
18	61546201	CLICK HOLDER	53	61254901	BAIL HOLDER SCREW COLLAR	89	61301301	DRIVE BEARING(A) WASHER
19	61525101	CLICK REEF SPRING	54	61255001	BAIL HOLDER SCREW	90	61800902	ENJINE PLATE(R)
20	6G471501	ROTOR NUT PLATE	55	6G298201	BAIL SHAFT	91	66672401	HANDLE CAP O-RING
21	61729101	ROTOR NUT PACKING	56	6G685401	BAIL SHAFT WASHER	92	61802101	HANDLE CAP
22	63755202	ROTOR NUT WASHER	57	6G944501	BAIL SHAFT SPRING	93	66644203	OSCILLATING GEAR WASHER
23	6H959602	ROTOR NUT BALL BEARING	58	6G471602	BAIL SHAFT SPRING COLLAR	94	61802801	OSCILLATING GEAR
24	61690201	ROTOR NUT BEARING COLLAR	59	61283901	BAIL HOLDER COVER	95	66466001	OSCILLATING GEAR O-RING
25	61253001	ROTOR NUT	60	61255201	BAIL HOLDER COVER SCREW	96	66466100	OSCILLATING GEAR WASHER
26	61808500	ROTOR NUT COLLAR	61	61554901	STOPPER LEVER PACKING(A)	97	66466202	OSCILLATING GEAR BALL BEARING
27	63712836	ROTOR NUT WASHER	62	61774701	STOPPER LEVER	98	66940402	OSCILLATING GEAR SCREW
28	6H022701	ROTOR NUT SCREW	63	61782101	STOPPER LEVER SCREW	99	614459901	DRIVE GEAR RING
29	61284001	ROTOR COVER	64	61553802	MAGSEALED PLATE	100	66523403	DRIVE BALL BEARING(B)
30	6H022701	ROTOR COVER SCREW	65	6H842807	MAGSEALED PLATE SCREW	101	66645600	DRIVE BEARING(B) WASHER
31	61283501	ROTOR	66	6H502200	ONEWAY CLUCH WASHER	102	61801101	ENJINE PLATE PACKING)
32	61435201	KICK LEVER SPRING	67	6H412602	ONEWAY CLUCH	103	61801003	ENJINE PLATE(L)
33	61339500	KICK LEVER WASHER	68	61553701	STOPPER LEVER PACKING(B)	104	6H730801	HANDLE PACKING
34	61283601	KICK LEVER ASSY	69	61774801	CLUCH RING	105	61802301	HANDLE ASSY
35	6H417701	KICK LEVER SCREW	70	61552102	PINION BEARING PLATE	106	66315302	REAR CAP SCREW WASHER(A)
			71	61552202	PINION BEARING PLATE SCREW	107	66315301	REAR CAP SCREW WASHER(B)
						108	63758503	REAR CAP SCREW WASHER(C)