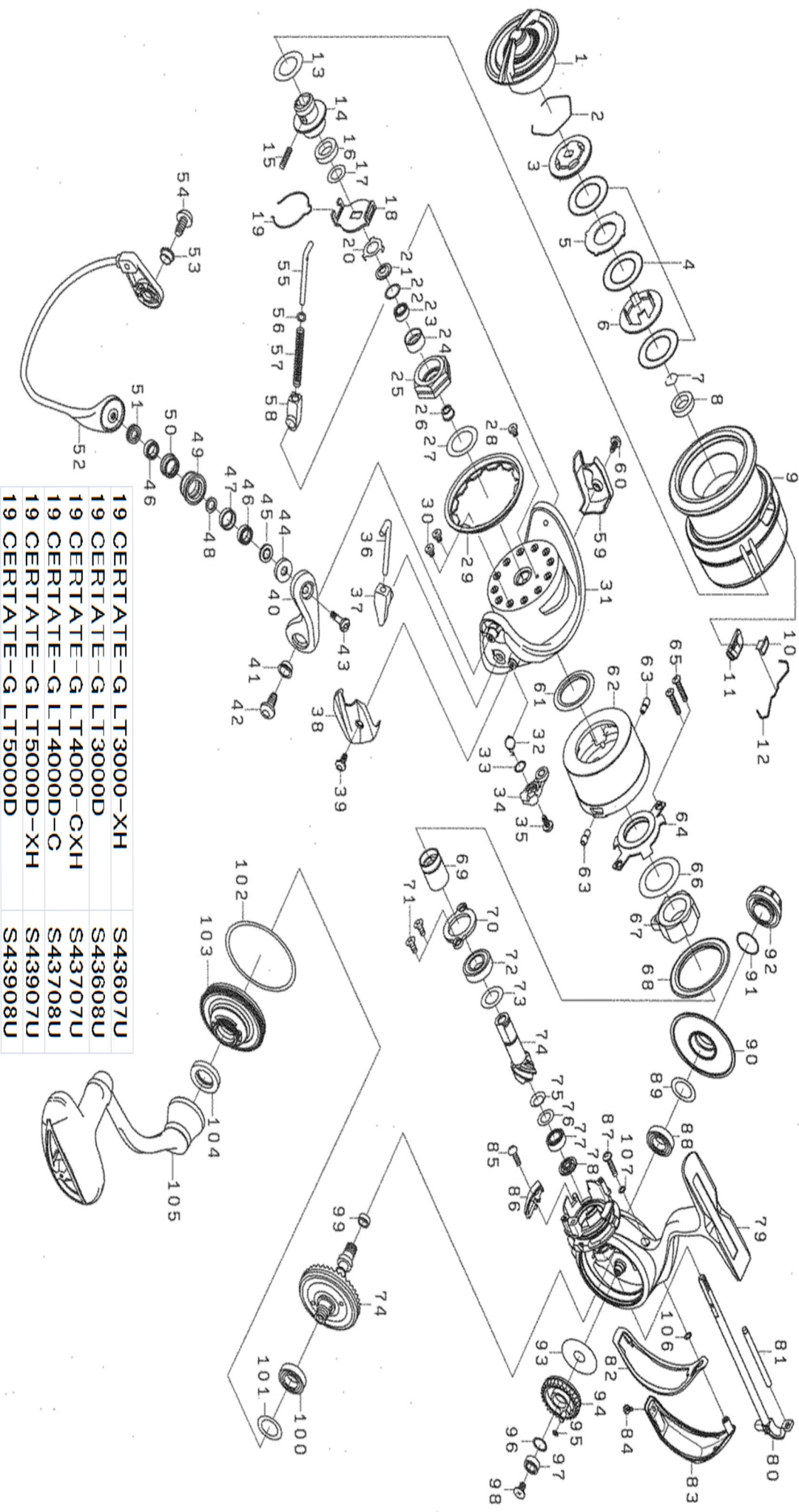




Please quote by part number, not key number when ordering  
 spares@daiwaaustralia.com.au PH: 02 8644 8644  
**2019 CERTATE LT 4000-CXH**



19 CERTATE-G LT3000-XH	S43607U
19 CERTATE-G LT3000D	S43608U
19 CERTATE-G LT4000-CXH	S43707U
19 CERTATE-G LT4000D-C	S43708U
19 CERTATE-G LT5000D-XH	S43907U
19 CERTATE-G LT5000D	S43908U



Please quote by part number, not key number when ordering  
 spares@daivawastralia.com.au PH: 02 8644 8644  
**2019 CERTATE LT 4000-CXH**

Key No.	Part Number	Description	Key No.	Part Number	Description	Key No.	Part Number	Description
1	6J784401	DRAG KNOB ASSY	36	6I262601	ARM LEVER SHAFT	72	6G279602	PINION BALL BEARING(A)
2	6J556701	DRAG RING	37	6I262701	ARM LEVER SHAFT COLLAR	73	63758500	PINION BEARING ( A ) WASHER
3	6J556601	DRAG RATCHET	38	6J572201	ARM LEVER HOLDER COVER	74	6Z024673	PINION+DRIVE GEAR SET
4	6J679101	ATD DRAG WASHER(LT3-3pcs)	39	6I255201	ARM LEVER HOLDER COVER SCREW	75	6H814900	PINION BEARING ( B ) SPRING WASHER
5	6J561201	DRAG DISC WASHER	40	6I254801	ARM LEVER	76	6E096500	PINION BEARING ( B ) WASHER
6	6I556501	DRAG RIP WASHER	41	6I254901	ARM LEVER SCREW COLLAR	77	6G538007	PINION BALL BEARING( B )
7	6B358702	SPOOL COLLAR RING	42	6I255001	ARM LEVER SCREW	78	6I552001	PINION BEARING ( B ) COLLAR
8	6J546701	SPOOL COLLAR	43	6I257001	ROLLER CREW	79	6I783002	BODY ASSY
9	6J784101	SPOOL ASSY.(ATD)	44	6J538001	ROLLER MAG COLLAR ( B )	80	6I783301	MAIN SHAFT
10	6J558001	LINE STOPPER	45	6J538401	ROLLER MAGNET ASSEMBLY(A)	81	6I774301	OSCILLATING POST
11	6J568601	LINE STOPPER PLATE	46	6I256702	ROLLER BALL BEARING (B)	82	6I783901	REAR CAP PACKING
12	6J314801	LINE STOPPER SPRING	47	6I256601	ROLLER COLLAR(A)	83	6I784001	REAR CAP
13	6J546300	SPOOL WASHER (A)	48	6I256301	ROLLER COLLAR(B)	84	6I774601	REAR CAP SCREW (B)
14	6J549501	SPOOL METAL	49	6I256501	LINE ROLLER	85	6H158201	BAIL KICK COLLAR SCREW
15	6I558201	SPOOL METAL SCREW	50	6I256401	ROLLER COLLAR(A)	86	6I571801	BAIL KICK COLLAR
16	6H624801	SPOOL METAL COLLAR	51	6J537801	ROLLER MAGNET ASSEMBLY(B)	87	6I553603	REAR CAP SCREW (A)
17	6J602201	SPOOL WASHER (B)	52	6J903401	BAIL ASSY	88	6G818902	DRIVE BALL BEARING ( A )
18	6J546201	CLICK HOLDER	53	6I254901	BAIL HOLDER SCREW COLLAR	89	6I555501	DRIVE BEARING ( A ) WASHER
19	6J525101	CLICK REEF SPRING	54	6I255001	BAIL HOLDER SCREW	90	6I783702	ENGINE PLATE ( R )
20	6G471501	ROTOR NUT PLATE	55	6G298201	BAIL SHAFT	91	6G399702	HANDLE CAP O-RING
21	6J729101	ROTOR NUT PACKING	56	6G685401	BAIL SHAFT WASHER	92	6I555901	HANDLE CAP
22	63755202	ROTOR NUT WASHER	57	6G944501	BAIL SHAFT SPRING	93	6G610104	OSCILLATING GEAR WASHER
23	6H959602	ROTOR NUT BALL BEARING	58	6G471602	BAIL SHAFT SPRING COLLAR	94	6I570401	OSCILLATING GEAR
24	6J690201	ROTOR NUT BEARING COLLAR	59	6I572701	BAIL HOLDER COVER	95	6G869601	OSCILLATING GEAR O-RING
25	6I253001	ROTOR NUT	60	6I255201	BAIL HOLDER COVER SCREW	96	6H129200	OSCILLATING GEAR WASHER
26	6I808500	ROTOR NUT COLLAR	61	6I554901	STOPPER LEVER PACKING(A)	97	6G686904	OSCILLATING GEAR BALL BEARING
27	63712836	ROTOR NUT WASHER	62	6J774701	STOPPER LEVER	98	6G940403	OSCILLATING GEAR SCREW
28	6H022701	ROTOR NUT SCREW	63	6J782101	STOPPER LEVER SCREW	99	6I552701	DRIVE GEAR RING
29	6J284001	ROTOR COVER	64	6I553802	MAGSEALED PLATE	100	6H739701	DRIVE BALL BEARING ( B )
30	6H022701	ROTOR COVER SCREW	65	6H842807	MAGSEALED PLATE SCREW	101	6G613400	DRIVE BEARING ( B ) WASHER
31	6J571901	ROTOR	66	6H502200	ONEWAY CLUCH WASHER	102	6I571501	ENGINE PLATE PACKING)
32	6J435201	KICK LEVER SPRING	67	6H412602	ONEWAY CLUCH	103	6I783804	ENGINE PLATE ( L )
33	6J339500	KICK LEVER WASHER	68	6I553701	STOPPER LEVER PACKING(B)	104	6H866201	HANDLE PACKING
34	6J572001	KICK LEVER ASSY	69	6J774801	CLUCH RING	105	6I784501	HANDLE ASSY
35	6H417701	KICK LEVER SCREW	70	6I552102	PINION BEARING PLATE	106	6G315302	REAR CAP SCREW WASHER(A)
			71	6I552202	PINION BEARING PLATE SCREW	107	6G315301	REAR CAP SCREW WASHER(B)