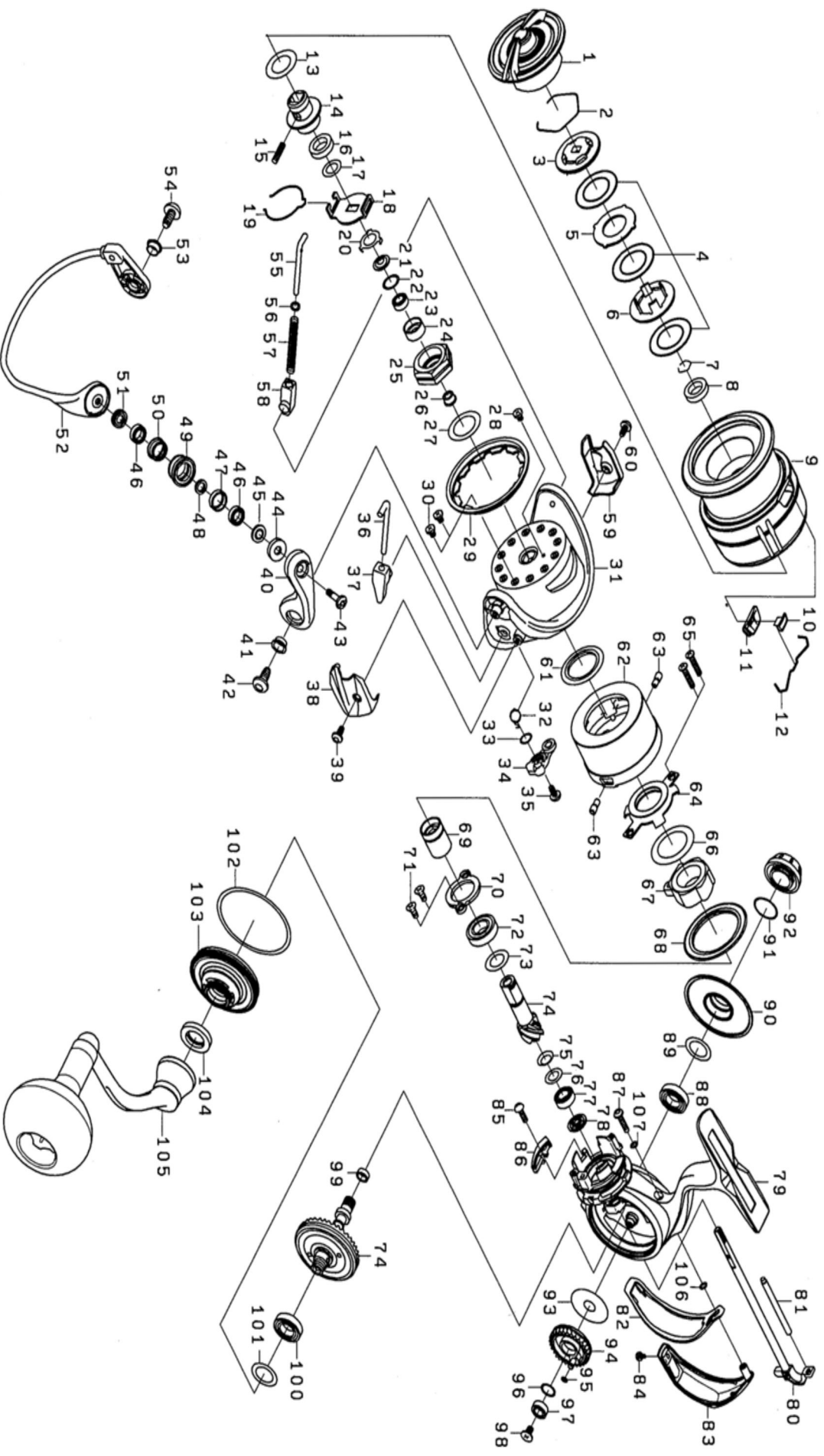




Please quote by part number, not key number when ordering
spares@daiwaaustralia.com.au PH: 02 8644 8644
2019 CERTATE LT 3000D-C





Please quote by part number, not key number when ordering
 spares@daiwaaustralia.com.au Ph: 02 8644 8644

2019 CERTATE LT 3000D-C

| Key No. | Part Number | Description | Key No. | Part Number | Description | Key No. | Part Number | Description |
|---------|-------------|---------------------------|---------|-------------|------------------------------|---------|-------------|----------------------------------|
| 1 | 6J775201 | DRAG KNOB ASSY | 36 | 6J254601 | ARM LEVER SHAFT | 72 | 6G279602 | PINION BALL BEARING (A) |
| 2 | 6J556701 | DRAG RING | 37 | 6J254701 | ARM LEVER SHAFT COLLAR | 73 | 63758500 | PINION BEARING (A) WASHER |
| 3 | 6J556601 | DRAG RAATCHET | 38 | 6J255103 | ARM LEVER HOLDER COVER | 74 | 6Z024882 | PINION+DRIVE GEAR SET |
| 4 | 6J679101 | ATD DRAG WASHER(LT3-3pcs) | 39 | 6J255201 | ARM LEVER HOLDER COVER SCREW | 75 | 6H814900 | PINION BEARING (B) SPRING WASHER |
| 5 | 6J561201 | DRAG DISC WASHER | 40 | 6J254801 | ARM LEVER | 76 | 6E096500 | PINION BEARING (B) WASHER |
| 6 | 6J556501 | DRAG RIP WASHER | 41 | 6J254901 | ARM LEVER SCREW COLLAR | 77 | 6G538007 | PINION BALL BEARING (B) |
| 7 | 6B358702 | SPOOL COLLAR RING | 42 | 6J255001 | ARM LEVER SCREW | 78 | 6J552001 | PINION BEARING (B) COLLAR |
| 8 | 6J546701 | SPOOL COLLAR | 43 | 6J257001 | ROLLER CREW | 79 | 6J773302 | BODY ASSY |
| 9 | 6J867401 | SPOOL ASSY (ATD) | 44 | 6J538001 | ROLLER MAG COLLAR (B) | 80 | 6J773601 | MAIN SHAFT |
| 10 | 6J558001 | LINE STOPPER | 45 | 6J538401 | ROLLER MAGNET ASSEMBLY(A) | 81 | 6J774301 | OSCILLATING POST |
| 11 | 6J558101 | LINE STOPPER PLATE | 46 | 6J256702 | ROLLER BALL BEARING (B) | 82 | 6J774401 | REAR CAP PACKING |
| 12 | 6J314801 | LINE STOPPER SPRING | 47 | 6J256601 | ROLLER COLLAR(A) | 83 | 6J774501 | REAR CAP |
| 13 | 6J546300 | SPOOL WASHER (A) | 48 | 6J256301 | ROLLER COLLAR(B) | 84 | 6J774601 | REAR CAP SCREW (B) |
| 14 | 6J549501 | SPOOL METAL | 49 | 6J256501 | LINE ROLLER | 85 | 6H158201 | BAIL KICK COLLAR SCREW |
| 15 | 6J558201 | SPOOL METAL SCREW | 50 | 6J256401 | ROLLER COLLAR(A) | 86 | 6J571801 | BAIL KICK COLLAR |
| 16 | 6H624801 | SPOOL METAL COLLAR | 51 | 6J537801 | ROLLER MAGNET ASSEMBLY(B) | 87 | 6J553603 | REAR CAP SCREW (A) |
| 17 | 6J602201 | SPOOL WASHER (B) | 52 | 6J891101 | BAIL ASSY | 88 | 6G818902 | DRIVE BALL BEARING (A) |
| 18 | 6J546201 | CLICK HOLDER | 53 | 6J254901 | BAIL HOLDER SCREW COLLAR | 89 | 6J555501 | DRIVE BEARING (A) WASHER |
| 19 | 6J525101 | CLICK REEF SPRING | 54 | 6J255001 | BAIL HOLDER SCREW | 90 | 6J774102 | ENGINE PLATE(R) |
| 20 | 6G471501 | ROTOR NUT PLATE | 55 | 6G471803 | BAIL SHAFT | 91 | 6G399702 | HANDLE CAP O-RING |
| 21 | 6J729101 | ROTOR NUT PACKING | 56 | 6G685401 | BAIL SHAFT WASHER | 92 | 6J555901 | HANDLE CAP |
| 22 | 63755202 | ROTOR NUT WASHER | 57 | 6J255301 | BAIL SHAFT SPRING | 93 | 6G610104 | OSCILLATING GEAR WASHER |
| 23 | 6H959602 | ROTOR NUT BALL BEARING | 58 | 6G471602 | BAIL SHAFT SPRING COLLAR | 94 | 6J601701 | OSCILLATING GEAR |
| 24 | 6J690201 | ROTOR NUT BEARING COLLAR | 59 | 6J255903 | BAIL HOLDER COVER | 95 | 6G683301 | OSCILLATING GEAR O-RING |
| 25 | 6J253001 | ROTOR NUT | 60 | 6J255201 | BAIL HOLDER COVER SCREW | 96 | 6H129200 | OSCILLATING GEAR WASHER |
| 26 | 6J808500 | ROTOR NUT COLLAR | 61 | 6J554901 | STOPPER LEVER PACKING(A) | 97 | 6G686904 | OSCILLATING GEAR BALL BEARING |
| 27 | 63712836 | ROTOR NUT WASHER | 62 | 6J774701 | STOPPER LEVER | 98 | 6G940403 | OSCILLATING GEAR SCREW |
| 28 | 6H022701 | ROTOR NUT SCREW | 63 | 6J782101 | STOPPER LEVER SCREW | 99 | 6J552701 | DRIVE GEAR RING |
| 29 | 6J257101 | ROTOR COVER | 64 | 6J553802 | MAGSEALED PLATE | 100 | 6H739701 | DRIVE BALL BEARING (B) |
| 30 | 6H022701 | ROTOR COVER SCREW | 65 | 6H842807 | MAGSEALED PLATE SCREW | 101 | 6G613400 | DRIVE BEARING (B) WASHER |
| 31 | 6J254301 | ROTOR | 66 | 6H502200 | ONEWAY CLUCH WASHER | 102 | 6J553001 | ENGINE PLATE PACKING |
| 32 | 6J435201 | KICK LEVER SPRING | 67 | 6H412602 | ONEWAY CLUCH | 103 | 6J774204 | ENGINE PLATE(L) |
| 33 | 6J339500 | KICK LEVER WASHER | 68 | 6J553701 | STOPPER LEVER PACKING(B) | 104 | 6H866201 | HANDLE PACKING |
| 34 | 6J254401 | KICK LEVER ASSY | 69 | 6J774801 | CLUCH RING | 105 | 6J868001 | HANDLE ASSY |
| 35 | 6H417701 | KICK LEVER SCREW | 70 | 6J552102 | PINION BEARING PLATE | 106 | 6G315302 | REAR CAP SCREW WASHER(A) |
| | | | 71 | 6J552202 | PINION BEARING PLATE SCREW | 107 | 6G315301 | REAR CAP SCREW WASHER(B) |